

PERSONALITY DESCRIPTIONS

AUTUMN – WINTER CHOLERIC - MELANCHOLIC T3/4
aka STRIKING AUTUMN, DEEP AUTUMN

The Autumn-Winter is highly industrious, decisive, driven, and detail oriented. This personality can be overpowering and needs to guard against presenting an easily irritated and highly critical nature, from their being Autumn/Choleric.

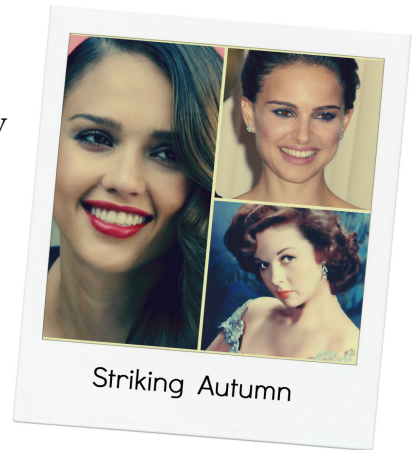
While they are analytical, luckily this combination is not as troubled by melancholy as other secondary Winter/Melancholic natures.

They are assertive, if not verbally aggressive rulers, often forcefully dominating at work and in the home. They inspire admiration, but can also be abrasive.

Interpersonal relationships are a challenge for this type because they are so hard to please and prone to perfectionism, but they are loyal friends. There is very strong focus on getting things done and meeting high standards.

STRIKING or BRONZE AUTUMN – Very dark hair (usually brunette, possibly jet black with warm tones, possibly metallic looking) indicates a mixing with Winter Season, for which they are sometimes mistaken. This Autumn type may look good in a warm black which is found on strip 40 in Autumn's Color Fan®. Eyes may be dark warm brown, rust, deep olive-green, or steel blue and may have Winter spokes. Skin will have warm dark red orange undertone. May have oval face shape, with prominent cheek bones, or broad or angular face.

Note: Eye color and pattern can show your secondary and hair color is random enough that it should not be an overall determinant. Autumn hair should be warm and muted.



Resources: Kentner, Scaman, Catholic Match, Hello Quizzy, pastoral-counseling-center.org