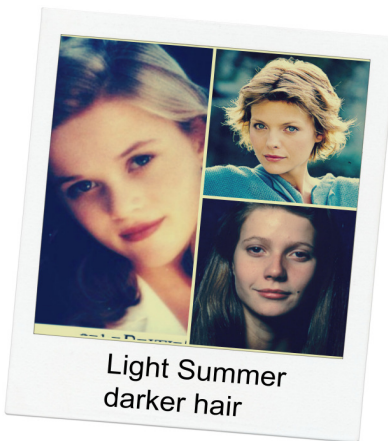


MAKEUP LISTS

SUMMER – SPRING PHLEGMATIC - SANGUINE T2/1
aka SUNSHINE SUMMER, LIGHT SUMMER

SUNSHINE SUMMER – (Summer – Spring) golden blonde highlights in light ash brown hair, dun color, or slight tinge of red. It is possible that their hair will darken to medium brown. They are the most believable blond, even dyed. A touch of yellow may be in the eye pattern, but generally more blue than green (will not look turquoise

like spring). Eyes will most often be blue (maybe green), possibly have transparency of summer, with Spring's twinkle (and possibly a touch of yellow). Skin tone has blue undertone, may also have Spring's yellow overtone, creating a light green cast. Not all Summer-Springs are blonde. Many such celebrities actually had light brown hair when they were younger, or it darkens over time.



As a blonde, you may choose to wear Summer peach or pink gold frost lipstick. A blued pink is a good blush color, or orchid or even purple, as they coordinate with peach. You have more yellow in your pigment so the complement is purple, which makes for a good eyeshadow color, as well as lavender. Use brown as a contour eyeshadow, perhaps blended with blue or lavender, and yellow as a highlighter. Use a Summer brown eyeliner.

SHOP <http://mindfulfourmakeup.blogspot.com/2014/08/light-summer.html>

LIPS:

Aveda – Nourish-mint Rehydrating Lip Glaze Sunkissed Melon

Bobbi Brown – Bright Pink Lip Gloss

Boots – Stay Perfect in Mischief

Chanel – Rouge Allure Lip Gloss no. 58 Imaginaire; Rouge Coco Shine in Adventure; Berry Pink Lipstick , Rouge Allure Lipstick no. 86 Desinvolte

Clinique – Different Lipstick in Glazed Berry and Think Bronze; Long Last Lipstick in Sugared Grapefruit; Buttershine Lipstick in Pink-A-Boo. Pink Taffy, and Pink Goddess; High Impact Lipstick in Extreme Pink; Bonfire, Clearly Pink, Guava Gold, Juicy Apple, Kissy Fit , and Mimosa Blossom Long Last Glosswear

Cover Girl – Naturelux Lipbalm in Anemone; LipPerfection no. 375 Coquette, Wetslicks in no. 415 Crush

Dior – Dior Addict Lipstick in Androgyne,

Elizabeth Arden – Baby Pink Ceramide Lipstick

Estee Lauder – Pink Seduction Gloss Stick,

Guerlain – Bal de Mais, Chamade, Rouge Broderie

Jane Iredale – Lip Fixation in Fascination,

Lancome – Le Rouge Absolu no. 341 Misty Rose

Laura Mercier – Healthy Lips and Sexy Satin Lipstick; Pink Dawn Shimmer Lip Color; Courtisane , Cranberry, and Rosewater Gloss Stick; BonBon Lip Glace

MAKEUP LISTS

L'Oreal – Color Riche Lipcolor in Make Me Blush

MAC- Hot Gossip, Kinda Sexy, Lovelorn, and Please Me Lipstick

Maybelline – Color Sensation Lipstick no. 105 Pink Wink; Colorstay High Shine Lipstick no 825 Fruit Punch; Shine Sensation Lip Gloss no. 75 Cherry Kiss, no. 25 Glamorous Guava, no. 80 Watermelon Punch

NARS – Flamenco and Venice Lipstick; Velvet Lipgloss Pencil in Happy Days and New Lover

Revlon – Temptress Super Lustrous Lipstick; Strawberry Shortcake Butter Balm

Rimmel – Stay Glossy in All Day Seduction, Eternal Flirt, and Stay My Rose; Lasting Finish Lipstick in Kiss;

Burgundy Shine, Auburn Breeze, Fancy, Latino, Precious Brown

BLUSH:

Bobbi Brown- Nectar Shimmer Brick Compact

Chanel – Joues Contrast no. 72 Rose Initial, Lumiere D'Artifices in Beiges (a highlighter)

Clinique – Iced Lotus and Precious Posy Powder Blush

Cover Girl – Rose Silk Cheekers, Color F/X –Bronzer in Gold

Dr. Hauschka – Rouge Powder Blush no. 03 Blushing Rose

Georgio Armani – Sheer Blusher no. 10 Beige

Laura Mercier – Second Skin Cheek Color in Wild Bouquet and Rose Petal

Make Up For Ever – High Definition Crème Blush no. 4

NARS – Mata Hari and Orgasm; The Multiple in Orgasm and Riviera; Cococobana Illuminator

Revlon – Blushing Berry Matte Powder Blush; and Berry Flirtatious Cream Blush

EYELINER:

Chanel – Khaki Platine Precision Eye Liner; Jade Long Lasting Eye Liner, Clarins – Eye Liner in Grey no. 03

Clinique – Slate and Smoky Brown Quickliner for Eyes; Starry Plum Creamshaper

Laura Mercier – Tightline Cake Eyeliner in Bleu Marine, MAC- Earthline Technakohl Eyeliner

Make Up For Ever- no. 22L Light Grey, no. 12L Blue Green

EYESHADOW:

Bobbi Brown – Cement, Ivory, Tan, and Shell Eye Shadow; Shimmerwash Eye Shadow in Rock; Crème

Eyeshadow in Bone and Suede, Chanel – Soft Touch Eye Shadow no. 83 Slate

Clinique – Colorsurge Eyeshadow in Frosted Blossom; Powder Duo in Ebb and Flow

E.L.F. – Brightening Eye Quad in Ethereal

Elizabeth Arden – Vanilla Color Intrigue Eyeshadow

Laura Mercier – Plum Smoke Matte Eye Shadow; Guava, Haze, Kir Royale, Sable , and Star Fruit Sateen

Mabelline – Stylish Smoke, MAC- Beautiful Iris, Bisque, Blanc Type, Creme di Violet, Digit, Gesso, Idol

Eyes, Indian Ink, Knight Divine, Moon's Reflection, Omega, Plum Dressing, Prussian, Quarry,Star Violet,

Vellum,Yogurt Powder Shadow

Urban Decay- Heist, Sellout, Sin, Strip, and X Powder Shadow

MASCARA: Brown, Charcoal, Grey