

PRIME RETAIL CORNER LOT FOR SALE

MAUI LANI

VILLAGE CENTER

The Dynamic Center of Maui's Premier Master - Planned Community



Fee Simple vacant land in Maui's newest planned community connecting Kahului and Wailuku. Located at the busy intersection of Kuikahi Drive and Waiale Road and across from Walgreens, Longs Drugs and Foodland. The Center's VMX zoning allows for a wide array of uses. Fully entitled, ready-to-build lot with drainage and utilities stubbed to site. Maui Lani's community includes 3,700 homes in its master plan.

PROPERTY DETAILS		DEMOGRAPHICS	
		5 Mi. Radius	10 Mi. Radius
TMK:	(2) 3-8-7-168	2013 Estimated Population	55,558
SIZE:	135,167 SF	2018 Projected Population	79,127
ZONED:	VMX - Village Mixed Use	2013 No. of Households	58,327
SALES PRICE:	\$8,110,000	2018 Projected Households	16,671
			25,246
			17,576
			26,662

Exclusively Offered by:

Commission to cooperating brokers is 2.5% of sales price



Grant Howe, CCIM R(B)
ghowe@mauibiz.com

Ben Walin, CCIM R(B)
bwalin@ccim.net

COMMERCIAL PROPERTIES
OF MAUI

808.244.2200

View more information online at
www.mauilani.com

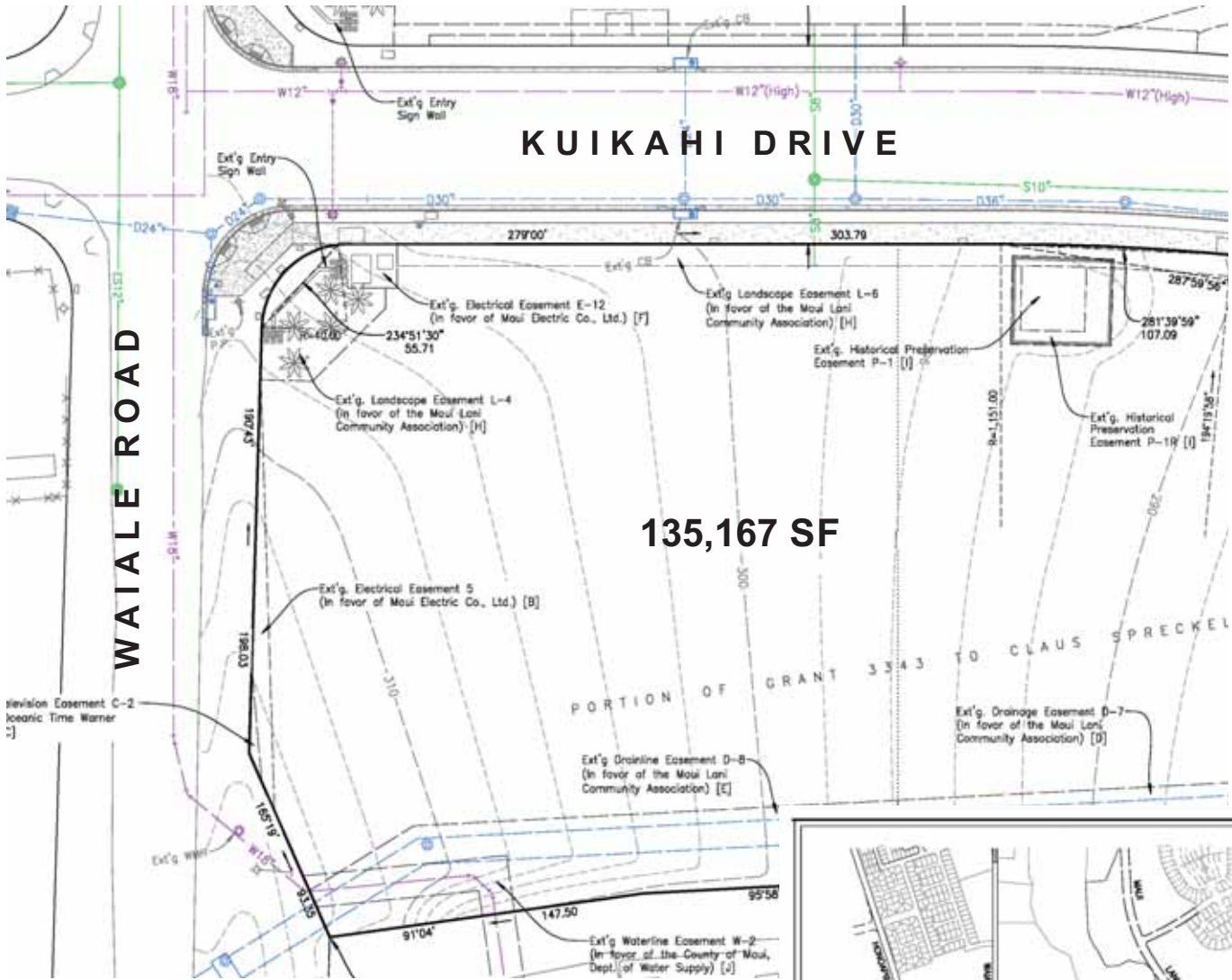
2145 Wells Street • Suite 105 • Wailuku, HI 96793-2225 • mauibiz.com

PRIME RETAIL CORNER LOT FOR SALE

MAUI LANI

VILLAGE CENTER

The Dynamic Center of Maui's Premier Master - Planned Community



View more information online at
www.mauilani.com

Commission to cooperating brokers is 2.5% of sales price.

Exclusively Offered by:



COMMERCIAL PROPERTIES
OF MAUI

Grant Howe, CCIM R(B) | ghowe@mauibiz.com

Ben Walin, CCIM R(B) | bwalin@ccim.net

808.244.2200

2145 Wells Street • Suite 105 • Wailuku, HI 96793-2225 • mauibiz.com