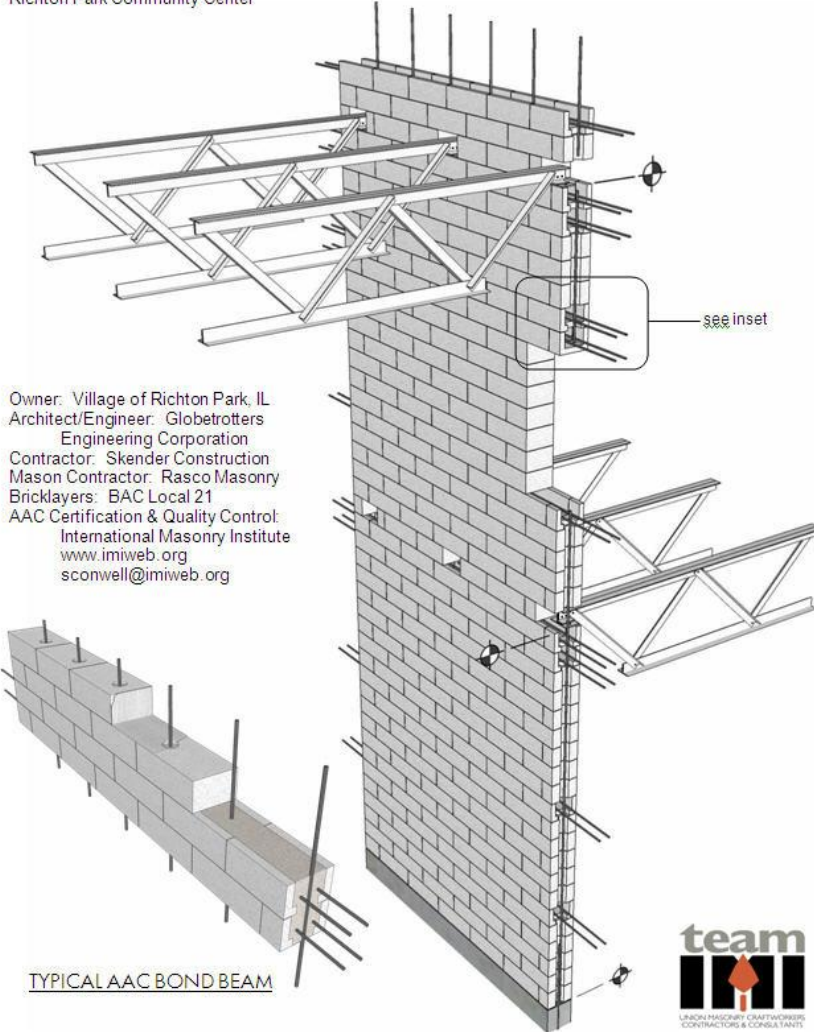


Richton Park Community Center

IMI is consulting on this BAC-installed loadbearing AAC project. IMI was very active on the project this month, making site visits, documenting job via field reports and photos, and hosting an architectural field trip of the site to promote BAC-installed AAC.

LOADBEARING AUTOCLAVED AERATED CONCRETE (AAC) MASONRY WALL

Richton Park Community Center



Architect Margaret Lehto, AIA of Globetrotters Engineering Corporation discusses the benefits of AAC construction on the Richton Park Community Center.



The large (24' long), lightweight AAC masonry units allow the union bricklayers from Rasco Masonry to skillfully build this project to an ambitious construction schedule.



28-foot high reinforced AAC masonry walls at the gymnasium support steel trusses at two different roof heights.

Links to Project Photos

AAC Sample Panel
<http://picasaweb.google.com/smconwell/AACSamplePanel?feat=directlink>

AAC Feb 22
<http://picasaweb.google.com/smconwell/AACFeb222010?feat=directlink>

AAC Feb 24
<http://picasaweb.google.com/smconwell/AACFeb242010?feat=directlink>

AAC March 1
<http://picasaweb.google.com/smconwell/AACMarch12010?feat=directlink>

AAC March 4
<http://picasaweb.google.com/smconwell/AACMarch42010?feat=directlink>

AAC March 17, 2010
<http://picasaweb.google.com/smconwell/AACMarch172010?feat=directlink>

AAC April 14, 2010
<http://picasaweb.google.com/smconwell/AACApril142010?feat=directlink>



Scott Conwell, AIA, LEED AP
Director of Market Development

Illinois area office

International Masonry Institute

2140 Corporate Drive Addison, Illinois 60101

(630) 396-3144

sconwell@imiweb.org

(630) 953-2106 fax

www.imiweb.org

MEDIA ADVISORY

April 27, 2010
for immediate release

Architects view innovative AAC masonry at Richton Park Community Center

When the Village of Richton Park decided to build a new Community Center next to their Village Hall on Sauk Trail, they paid careful attention in choosing an exterior building material that would meet their needs. According to T. Abraham Lentner, Richton Park's Director of Economic Development, the Village balanced their need for low initial and life cycle costs with their desire for aesthetics, durability, low maintenance, and environmental stewardship. With the input of their architect/engineer Globetrotters Engineering Corporation, one material came to the forefront: Autoclaved Aerated Concrete, or AAC masonry.

Globetrotters designed the building within tight budget constraints, but did not sacrifice any opportunities for sustainable design. One source of significant savings is the absence of a structural steel framing system: the AAC masonry is reinforced horizontally and vertically, and is used in a loadbearing application throughout the project. The Village also expects to realize reduced energy costs due to the high R-values and thermal mass of AAC. The AAC walls will be coated with an acrylic polymer exterior finish simulating brick. The durability of the solid masonry walls will minimize the maintenance costs typical of a public building. These qualities of energy efficiency, durability, and longevity also impart sustainable qualities to the project and to the community.

As revolutionary a building material as AAC is, the success of its use relies heavily on the installers. Skender Construction, the general contractor, awarded the AAC masonry to union mason contractor Rasco Masonry. Less than twenty workdays after breaking ground in February, Rasco's average-size crew of six bricklayers had completed nearly all the perimeter loadbearing walls. Rasco's project manager Chris Clauser said that the larger 24-inch unit size and the material's lightness and ease of workability have contributed to their quick production times while allowing them to maintain their high workmanship standards. Even with the many grouted bond beams and vertically reinforced cells, the walls have gone up with speed and skill. Prior to beginning this project, Rasco's bricklayers went through an intensive AAC certification class delivered by the International Masonry Institute (IMI), which is the technical and training arm of the International Union of Bricklayers and Allied Craftworkers and their signatory contractors. In addition to training Rasco's crews, IMI is providing on-site quality control services, further enhancing the quality of the final product.

While it's not the first use of AAC in the Chicago area (there are many examples of AAC firewalls on downtown skyscrapers and other buildings), the Richton Park Community Center is the first loadbearing application of AAC in this area. This distinction has raised the interest of architects and engineers throughout the region, so much so that IMI organized a jobsite tour to view the building under construction. Some of the designers had prior experience with AAC, but most did not. After viewing the Richton Park Community Center and learning about this revolutionary wall system and all its benefits, architects are sure to consider structural AAC masonry for many of their projects in the future.

The AAC used on this project is a Hebel product manufactured by Xella, and distributed locally by RPS Greenway. For more information on AAC, contact International Masonry Institute at (630) 396-3144, sconwell@imiweb.org, or visit www.imiweb.org.

IMI ILLINOIS MONTHLY UPDATE

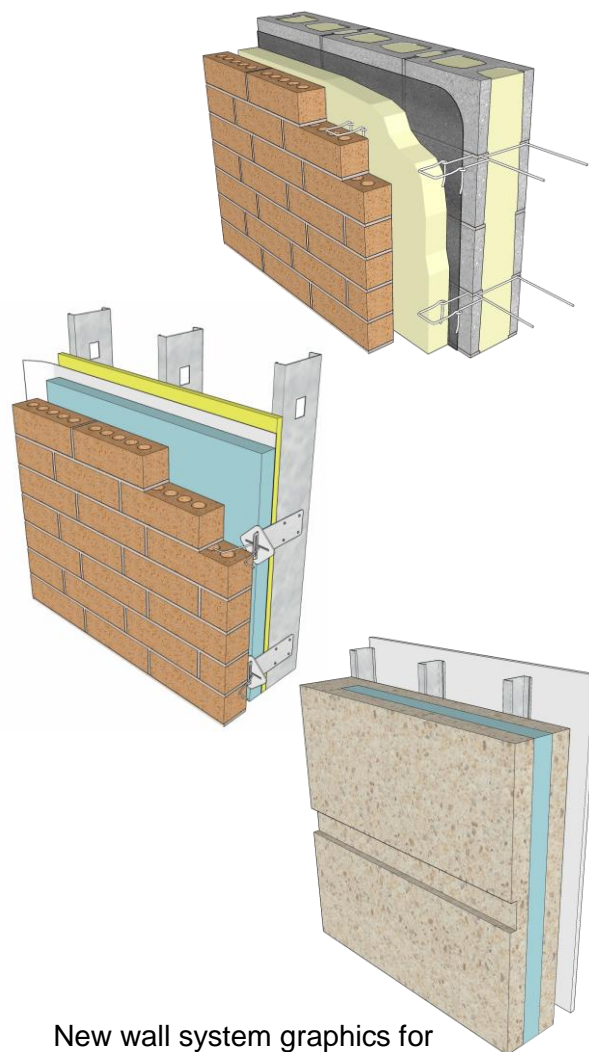
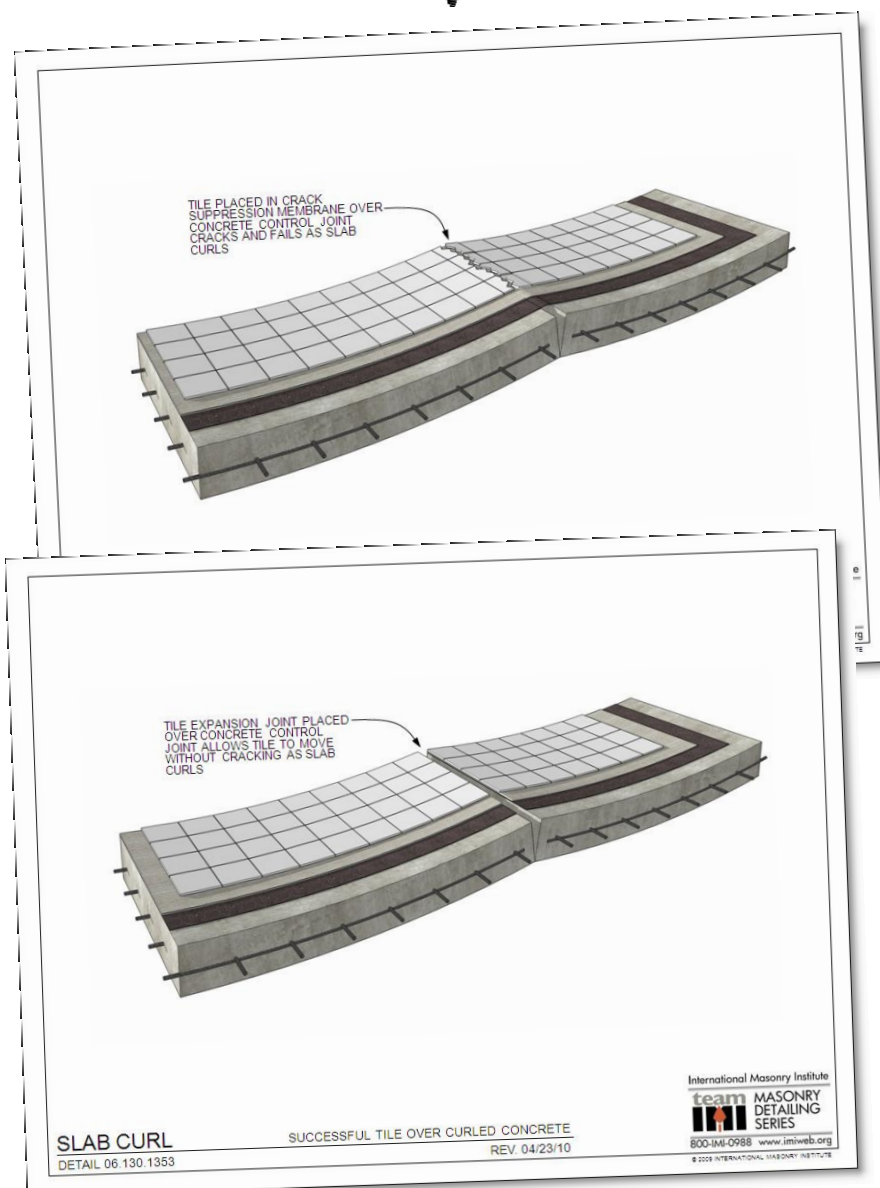
April 2010 p.3

BAC Member Presentations

On April 29 I gave an informal IMI Market Development presentation to a groups of BAC apprentices and journeymen at the BAC District Council Training Center. I discussed some typical examples of IMI activity that we do to generate jobs, like professional education, New Products expos, technical services, plan reviews, Sustainable Masonry Certification, structural masonry software, and response to building department requests concerning non-union work. ♦

Masonry Detailing Series

In April I produced a series of slides for Justin showing curling concrete and the resulting cracking of ceramic tile, even in the presence fo crack suppression membrane, if a floor expansion joint is not provided. I also did a new AAC detail and 5 new wall system graphics for Pete Loughney for the Life Cycle Cost Analysis ♦



New wall system graphics for Life Cycle Cost Analyses

Walsh Jobsite Quality Control

Ian Chen of Wiss Janney Elstner contacted IMI about getting involved in this project consisting of new 4-story loadbearing brick & block senior housing buildings on a campus that contains similar existing buildings. Don Stoltzner Masonry, a BAC contractor and MCAGC member, is the mason contractor.

I showed delivered a 60-min. seminar on moisture resistance and quality control, addressing flashing, full mortar joints, clean cavities, unobstructed weeps, wall drainage, and a little bit on movement control. Walsh said the owner does not have plans to turn over the building, but will maintain ownership and manage it. Owner says that they are going to be looking for full head joints. Dan Walsh, president of Walsh Construction, expressed concern over the flashing details, and encourages IMI involvement in their projects.

The principals at Stoltzner Masonry reinforced many of my points as I made them during the seminar with their bricklayers. Walsh and Stoltzner Masonry were appreciative that IMI came out for this training session.



BAC bricklayers with Don Stoltzner Masonry install flashing on this loadbearing masonry senior housing campus in Chicago.

Masonry Expo Planning

As of April 30, we have 212 confirmed attendees (not including IMI staff, BAC staff, or industry exhibitors), and 22 exhibiting companies. We continue to receive registrations daily.

Here is the proposed layout of the afternoon workshops:

- 1) Hand-on Bricklaying (led by Don Walker) – original training center space
- 2) Plastering Systems (led by Mike Hooper) – original training center space
- 3) Tile & Marble (led by Jerry Salemi and Bruce Nagel) – original training center space
- 4) Rainscreen Facades (led by Janeusz) – upstairs classroom or training center annex
- 5) Masonry Mortars (led by Scott Conwell and Nick Blohowiak) – upstairs classroom
- 6) Adhered Veneer (led by Justin Woelfel and Steve Schwarz) – training center annex
- 7) Concrete Staining & Polishing (led by Bob Arnold and Jim Lucas) – training center annex
- 8) Terrazzo Floors (led by Tony Demme and Lou Gianinni) – training center annex

2010 CHICAGOLAND MASONRY EXPO

MAY 26, 2010

Proposed Layout



IMI ILLINOIS MONTHLY UPDATE

April 2010 p.5

April Programs

Apr 6	AIA Young Architects meeting	Chicago, IL
Apr 7	Masonry For Sustainability multi-firm technical seminar	Madison, WI
Apr 8	Masonry For Sustainability multi-firm technical seminar	Milwaukee, WI
Apr 9	IMI jobsite seminar on Quality Control for Masonry w/ Walsh Construction, Stoltzner Masonry, at Suites of Autumn Green	Chicago, IL
Apr 12	meet w/ Brad Meyer, Terrazzo & Marble Supply re. Masonry Expo	Addison, IL
Apr 12	Ceramic Tile Contractors Association of Greater Chicago meeting, IMI announcement of Masonry Day	Arlington Heights, IL
Apr 13	Adhered Veneer mockup meeting w/ S.S. Schwarz, DalTile, Laticrete	Addison, IL
Apr 13	M-Team teleconference - 888-285-4585 x801878	Addison, IL
Apr 14	meet w/ David Bailey, Hebel AAC, re. Richton Park AAC	Richton Park, IL
Apr 15	meet w/ Tim Weber, Koo & Associates re. corbeling	Chicago, IL
Apr 15	jobsite visit w/ Walsh Construction, Stoltzner Masonry, at Suites of Autumn Green	
Apr 16	IMI Internal Education teleconference re. Masonry FAQs	Addison, IL
Apr 20	Masonry For Sustainability seminar/webcast for Walsh Construction nationwide offices	Chicago, IL
Apr 21	meet w/ Tile, Marble & Terrazzo team to review Masonry Expo mockups	Elmhurst, IL
Apr 23	IMI Internal Education teleconference re. Masonry Restoration & Cleaning	Addison, IL
Apr 23	meet w/ Dominika W., Chicago Block & Brick re. masonry expo	Addison, IL
April 26	"Masonry for Sustainability" seminar at General Services Administration (GSA)	Chicago, IL
April 27	Introduction to IMI market development presentation at DCTC OSHA class	Addison, IL
April 28	meet w/ Jim Allen, BAC and Bob Fahlstrom, City of Chicago Building Department re. Chicago Building Code	Chicago, IL
April 28	"Masonry: Beyond the Details" seminar at Vinci Hamp Architects	Chicago, IL
Apr 30	IMI Internal Education teleconference re. Caulking & Sealants	Addison, IL



Architects, engineers, GCs, CMs, and BAC contractors attended IMI's jobsite tour of the loadbearing AAC building in Richton Park, Illinois.

Current and Upcoming Professional Education Seminars

12/14/10	AIA Central Illinois	Bloomington, IL	"Cold Weather Masonry Construction"	30 est.
11/09/10	Association of Licensed Architects, Illinois chapter	Rolling Meadows, IL	"Masonry for Sustainability"	70 est.
10/26/10	O'Shea University / O'Shea Builders	Springfield, IL	"Cold Weather Masonry Construction"	30 est.
10/06/10	Walsh Construction (office)	Chicago, IL	"Cold Weather Masonry Construction"	50 est.
08/02/10	General Services Administration (3 of 3)	Chicago, IL	"Quality Control for Masonry"	50 est.
07/28/10	City of Chicago Public Buildings Commission	Chicago, IL	"Quality Control for Masonry"	30 est.
07/21/10	Chicago Transit Authority (2 of 2)	Chicago, IL	"Structural Masonry Basics"	30 est.
07/13/10	AIA Central Illinois	Bloomington, IL	"Masonry for Sustainability"	30 est.
06/30/10	Walsh Construction	Addison, IL	"Flashing Hands-on"	30 est.
06/23/10	Chicago Transit Authority (1 of 2)	Chicago, IL	"Masonry for Sustainability"	30 est.
06/17/10	Illinois State Apprentice Conference	Peoria, IL	"Masonry for Sustainability"	30 est.
06/07/10	General Services Administration (2 of 3)	Chicago, IL	"Moisture Control for Masonry"	50 est.
05/26/10	Chicago-area architects & engineers	Addison, IL	"IMI Masonry Day"	300 est.
05/25/10	Illinois masonry and tile contractors	Addison, IL	"Sustainable Masonry Certification Program"	20 est.
05/06/10	Dahlquist & Lutzow Architects	Elgin, IL	"Masonry for Sustainability"	20 est.
05/05/10	City of Chicago Public Buildings Commission	Chicago, IL	"Masonry for Sustainability"	30 est.
04/28/10	Vinci Hamp Architects	Chicago, IL	"Masonry: Beyond the Details"	14
04/27/10	OSHA 30-hour class	Addison, IL	"Introduction to IMI"	25
04/26/10	General Services Administration (1 of 3)	Chicago, IL	"Masonry for Sustainability"	15
04/22/10	Chicago area architects	Richton Park, IL	"AAC Case Study and jobsite tour"	30
04/20/10	Walsh Construction (office and multicast)	Chicago, IL	"Masonry for Sustainability"	65
04/09/10	Walsh Construction (job site)	Chicago, IL	"Quality Control for Masonry"	18
04/08/10	Milwaukee-area architects	Milwaukee, WI	"Masonry for Sustainability" multi-firm	45
04/07/10	Madison-area architects	Madison, WI	"Masonry for Sustainability" multi-firm	35

IMI ILLINOIS MONTHLY UPDATE

April 2010 p.6

Upcoming Programs

May 5	"Masonry for Sustainability" seminar at City of Chicago Public Buildings Commission	Chicago, IL
May 6	Masonry For Sustainability seminar at Dahlquist & Lutzow Architects	Elgin, IL
May 25	"Sustainable Masonry Certification Program" for Chicago-area mason contractors	Addison, IL
May 25	Dedication of new BAC ADC headquarters	Elmhurst, IL
May 26	2010 Chicagoland Masonry Expo	Addison, IL
June 7	"Moisture Control for Masonry" seminar for General Services Administration (GSA)	Chicago, IL
June 17-18	IMI presentation on Sustainability at Illinois State Apprentice Conference	Peoria, IL
June 23	Masonry for Sustainability seminar at Chicago Transit Authority (CTA)	Chicago, IL
June 30	Annual Masonry Flashing hands-on demonstrations and mini-seminar field trip for Walsh Construction	Addison, IL
July 13	Masonry For Sustainability seminar at AIA Central Illinois	Bloomington, IL
July 21	Structural Masonry Basics seminar at Chicago Transit Authority (CTA)	Chicago, IL
July 28	Quality Control for Masonry seminar at City of Chicago Public Buildings Commission	Chicago, IL
August 2	Quality Control for Masonry seminar at General Services Administration (GSA)	Chicago, IL
Oct 4	IMI-sponsored Tile Design program with Ceramic Tile Contractors Association of Greater Chicago meeting	Arlington Heights, IL
Oct 5	Association of Licensed Architects / CSI Architectural Expo	Oak Brook, IL
Oct 6	Cold Weather Masonry Construction seminar at Walsh Construction	Chicago, IL
Oct 26	Cold Weather Masonry Construction seminar at O'Shea University, O'Shea Builders	Springfield, IL
Nov 9	IMI presentation on Masonry for Sustainability for Association of Licensed Architects meeting	Rolling Meadows, IL
Nov 18	IMI hosts tour of District Council Training Center for Northern Illinois Construction Specifications Institute	Addison, IL
Dec 14	Cold Weather Masonry Construction seminar at AIA Central Illinois	Bloomington, IL

