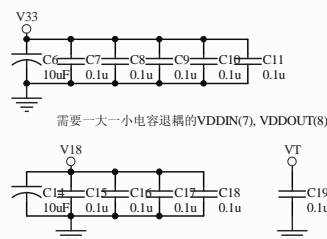
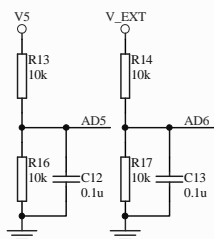
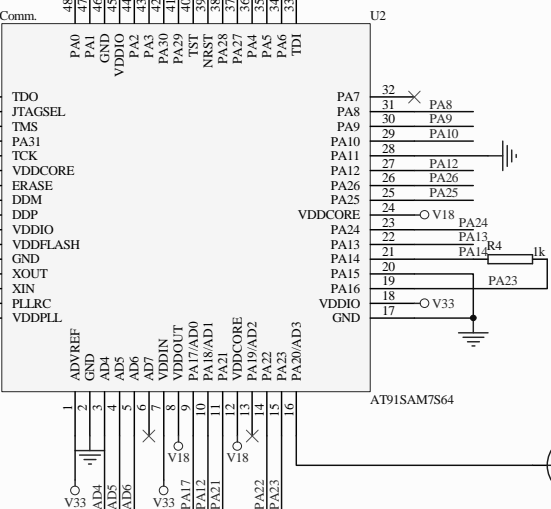
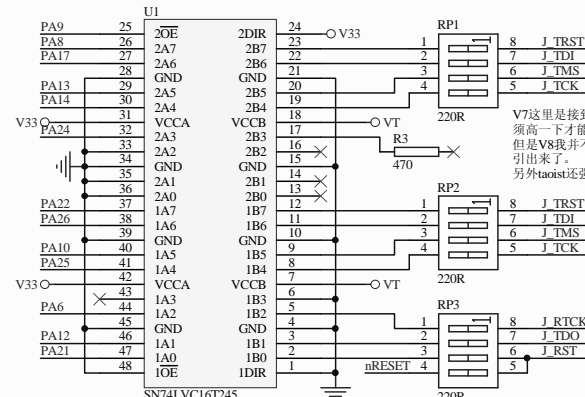
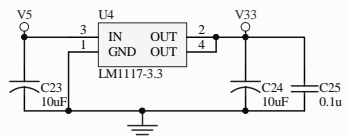
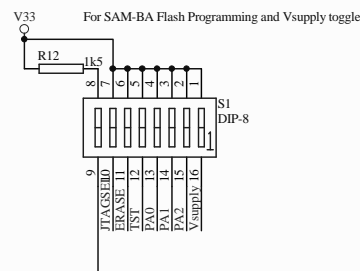


V7电路大多使用 $1k+0.01\mu$



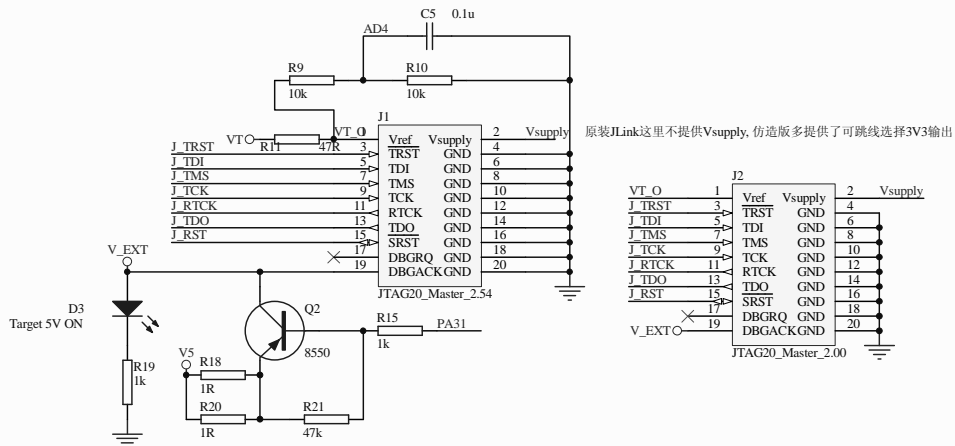
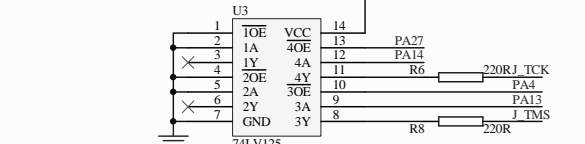
需要一大一小电容退耦的VDDIN(7), VDDOUT(8)



V7这里是接到J\_RTCK的, taoist说有的板子这个管脚必须高一下才能进入JTAG模式, 而V7考虑了这点, 但是V8我并不是确定是否也有这个, 为了保险起见, 还是引出来了。

另外taoist还强调470ohm电阻不能变。

这里都没接上拉，所以target板必须接



原装JLink这里不提供Vsupply, 仿造版多提供了可跳线选择3V3输出

Tip: Use ATMEL SAM-BA to download firmware

- 1, restore SAM-BA Bootloader
  - (1) Power up -> ERASE tie to high -> wait for 20s -> power down
  - (2) Power up -> TST, PA0, PA1, PA2 tie to high -> wait for 10s -> power down
- 2, connect to PC SAM-BA software
  - (1) USB D+ force pull up to 3.3V by 1.5kohm
  - (2) connect USB to PC
  - (3) Power up the board and refer to SAM-BA software manual for operation directions.

Title		
J-Link ARM Rev 8 (Special thanks to hihke, hontor, taoist @ ourdev.cn)		
Size B	Number	Revision v 0.30
Date:	2009-9-15	Sheet of
File:	H:\project\jlink\Jlink-v8.SchDoc	Drawn by: minux