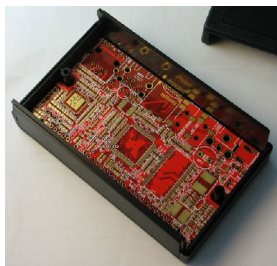




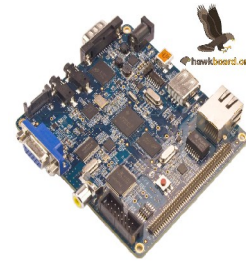
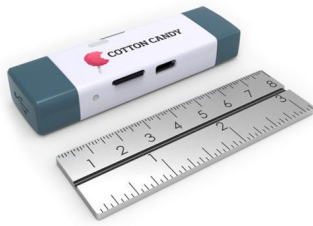
|                           |  |  |   |  |                                    |
|---------------------------|--|--|---|--|------------------------------------|
| Name                      | Raspberry Pi Model B                     | MK802                                    | Mele A1000  | Rhombus-Tech A10 EOMA-68                                 | Gooseberry board                   |
| SoC                       | Broadcom BCM2835                         | Allwinner A10                            | Allwinner A10   | Allwinner A10  | A10                                |
| CPU                       | 700 MHz ARM1176JZF-S core (ARM11 family) | 1.5GHz? Cortex-A8                        | 1GHz+ Cortex-A8   | 1.2ghz Cortex A8 ARM Core                                | 1 Ghz - 1.5 Ghz                    |
| GPU                       | Broadcom VideoCore IV, OpenGL ES 2.0     | MALI400MP OpenGL ES 2.0                  | MALI400MP OpenGL ES 2.0                                 | MALI400MP OpenGL ES 2.0 GPU                              | 1.2 Ghz highest stable             |
| RAM                       | 256 MB (shared with GPU)                 | 1GB / 512MB DDR3                         | 512MB DDR3  | 1gb  | Mali 400 MHz                       |
| Nand Flash                | -  | 4GB                                      | 4GB   | 1gb - 16gb   | 512MB                              |
| Video outputs             | Composite RCA, HDMI, DSI                 | HDMI                                     | HDMI, CVBS, VGA   | HDMI, TV-Out   | 4Gb                                |
| Audio                     | 3.5 mm jack                              | -  | R+L, optical SPDIF                                      | Headphones Socket  | Hdmi                               |
| USB                       | 2 USB 2.0                                | 2 (USB + mini USB OTG)                   | 3 usb   | USB-2  | 3.5mm Earphone Jack                |
| Storage                   | SD / MMC / SDIO                          | microSD                                  | SD, SATA  | Micro-SD, SATA   | 1x Mini Usb                        |
| Ethernet                  | 10/100                                   | -  | 10/100Mbps  | 10/100 Eth   | Micro SD                           |
| Wireless                  | -  | 802.11b/g, WAPI (Ralink8188)             | 802.11b/g/n WAPI(Ralink8188)                            | -  | -                                  |
| Other ports               | 8 × GPIO, UART, I²C bus, SPI bus         | -  | Internal board: UART, USB ADB, MIC?, CVBS-IN?, I2C?     | a lot  | 802.11 b/g/n                       |
| Power                     | 3.5 W                                    | -  | idle 0.34A@5V = 1.7W<br>youtube 720p = ~4.6W            | -  | unclear                            |
| Power source              | 5V                                       | 5V/2A                                    | 5V  | -  | -                                  |
| Size                      | 85.60 × 53.98 mm                         | 88.5 x 35 x 13.4 mm                      | 15.0 cm x 10.3 cm x 3.6 cm ?                            | PCMCIA size  | -                                  |
| Weight                    | 45 g                                     | -  | 406 g ?   | -  | -                                  |
| OS included               | -  | Android 4.0                              | Android 2.3   | -  | Android 2.3                        |
| Supported OS              | Debian GNU/Linux, Fedora, Arch Linux ARM | Puppy Linux, Ubuntu, ..                  | ubuntu, Debian, puppy, android ics                      | -  | ubuntu, Debian, puppy, android ics |
| Available for order today | No (about 4 month lead-time)             | Yes                                      | Yes   | No   | No                                 |
| Price                     | \$35 + shipping                          | \$73.00 (512MB), \$83 (1G) with shipping | \$86 with shipping, \$91 with TTL-USB and 2-2.54 cables | \$15 (mass volumes) + case, packaging, shipping, profit. | £40 + shipping                     |



|                              |  |                            |   |                           |   |
|------------------------------|--|----------------------------|---|---------------------------|---|
| Name                         | A13-OLinuXino                                  | VIA APC                    | VIA ARTiGO A1200 Fanless                    | VIA ARTiGO A1150          | BeagleBoard Rev. C4                                     |
| SoC                          | Allwinner A13                                  | VIA WonderMedia 8750       | Chipset VIA VX900                           | Chipset VIA VX900H        | TI OMAP3530   |
| CPU                          | 1GHz A13 Cortex A8                             | 800 MHz ARM11              | 1.0GHz x86 VIA Eden X2<br>L2 Cache 2MB      | 1.0GHz VIA Eden X2        | 720 MHz ARM Cortex-A8                                   |
| GPU                          | Mali400  | OpenGL ES 2.0              | VIA Chrome 9                                | VIA Chrome 9              | PowerVR SGX   |
| RAM                          | 512 MB   | DDR3 512MB                 | Up to 4GB DDR3                              | Up to 4GB DDR3            | 256 MB  |
| Nand Flash                   | optional 4GB                                   | 2GB                        | -   | -                         | 256 MB  |
| Video outputs                | VGA, optional HDMI, LCD                        | HDMI, VGA                  | D-Sub, HDMI                                 | D-Sub, HDMI               | DVI-D (HDMI connector), S-Video                         |
| Audio                        | Audio Output, Input                            | Audio out / Mic in         | VIA VT2021 Line-out & Mic-in                | Line-out, Line-in, Mic-in | Stereo in and out jacks                                 |
| USB                          | 3 + 1 USB Host, 1 USB OTG                      | USB 2.0 (x4)               | 4 x USB 2.0, optional USB 3.0               | 4USB, 1USB client port    | 1 USB, USB OTG  |
| Storage                      | SD   | microSD                    | Built-in 2.5" SATA<br>Built-in CFast socket | 2.5" SATA, optional SD    | SD/MMC  |
| Ethernet                     |  | 10/100 Ethernet            | dual VIA VT6130 Gigabit                     | VIA VT6130G Gigabit       | -   |
| Wireless                     | optional 802.11n<br>RTL8188CU                  | -                          | optional through mini-PCIe                  |                           | -   |
| Other ports                  | UEXT connector, GPIO<br>connector              |                            | 2 x RS-232, mini-PCIe                       |                           | RS-232 port, JTAG,<br>unsoldered: I2C, I2S, SPI, MMC/SD |
| Power                        |  | Idle 4W<br>Full load 13.5W | <27.51W                                     | <22.97W                   | 2 W   |
| Power source                 | 6-16VDC noise immune                           |                            | DC 12V                                      | DC 12V                    | 5 V   |
| Size                         | 130×90 mm                                      | Neo-ITX 170 x 85mm         | 234 mm x 30 mm x 124 mm                     | 146 mm x 52 mm x 99 mm    | 7.62 cm × 7.62 cm × 1.6 cm                              |
| Weight                       |  |                            | 1.2 kg                                      | 0.6 kg                    | 37g   |
| OS included                  |  | Android 2.3                |   |                           | -   |
| Supported OS                 | Linux  |                            | "ordinary" X86 OS                           | "ordinary" X86 OS         | Android, Ubuntu, Fedora,<br>ArchLinux, Gentoo, ..       |
| Available<br>for order today | No   | No                         |   |                           | Yes   |
| Price                        | €40 w/o WiFi (€32 OEM)<br>€50 w WiFi (€40 OEM) | \$49 + shipping            | \$310 + shipping                            | \$265 + shipping          | \$125 + shipping  |

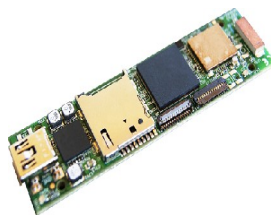


|                           |   |   |   |   |
|---------------------------|---|---|---|---|
| Name                      | BeagleBoard-xM  | BeagleBone  | PandaBoard  | PandaBoard ES   |
| SoC                       | TI DM3730   | TI AM3359 Sitara  | OMAP4430  | OMAP4460  |
| CPU                       | 1 GHz Cortex-A8   | 500MHZ-USB Powered<br>720MHZ-DC Powered Cortex A8         | 1GHz Dual-core ARM<br>Cortex-A9 MPCore  | 1.2 GHz Dual-core ARM<br>Cortex-A9 MPCore   |
| GPU                       | PowerVR SGX   | SGX530  | PowerVR SGX540  | PowerVR SGX540  |
| RAM                       | 512 MB  | 256MB DDR2 (128MB Optional)                               | 1GB DDR2  | 1GB DDR2  |
| Nand Flash                | 4 GB microSD  | -   | -   | -   |
| Video outputs             | DVI-D (HDMI connector), S-Video   | available via BeagleBone capes                            | HDMI, DVI-D, LCD  | HDMI, DVI-D, LCD, DSI   |
| Audio                     | Stereo in and out jacks   | -   | 3.5" in/out, HDMI Audio out   | 3.5" in/out, HDMI Audio, stereo in  |
| USB                       | 4 USB, USB OTG  | USB 2.0 Client Port, Host Port                            | 2x USB 2.0 host, 1OTG   | 2x USB 2.0 host, 1OTG   |
| Storage                   | MicroSD   | microSD   | SD/MMC  | SD/MMC  |
| Ethernet                  | 10/100 Ethernet   | 10/100  | 10/100 Ethernet   | 10/100 Ethernet   |
| Wireless                  | -   | -   | 802.11 b/g/n (WiLink™ 6.0),<br>Bluetooth v2.1 + EDR                                   | 802.11 b/g/n (WiLink™ 6.0),<br>Bluetooth v2.1 + EDR                                   |
| Other ports               | RS-232 port, JTAG connector,<br>Camera port, unsoldered: I2C, I2S,<br>SPI, MMC/SD | JTAG,<br><b>Expansion boards available</b>                | General purpose (I2C, GPMC,<br>USB, MMC, DSS, ETM), Camera,<br>LCD, JTAG, UART/RS-232 | General purpose (I2C, GPMC, USB,<br>MMC, DSS, ETM), Camera, LCD,<br>JTAG, UART/RS-232 |
| Power                     |   | Peak 502mA<br>Idling 170mA                                | Peak 710mA (USB mouse kbd,<br>HDMI, WLAN); min 163mA                                  |   |
| Power source              | 5V  | 5VDC  | 5VDC/4A   | 5VDC/4A   |
| Size                      | 3.25" x 3.25"   | 3.4" x 2.1"   | 114.3 mm x 101.6 mm   | 114.3 mm x 101.6 mm   |
| Weight                    | 113.4 grams in the box  | 39.68 grams   | 74 grams  | 81.5 grams  |
| OS included               | Angstrom  | Angstrom  | -   | -   |
| Supported OS              | Android, Ubuntu, Fedora,<br>ArchLinux, Gentoo, ..                                 | Debian, Ubuntu, Fedora,<br>ArchLinux, Gentoo, Sabayon, .. | Ubuntu, Ångström, Android, ..<br>Supported by Linaro                                  | Ubuntu, Ångström, Android, ..<br>Supported by Linaro                                  |
| Available for order today | Yes   | Yes   | Yes   | Yes   |
| Price                     | \$149 + shipping  | \$89 + shipping   | \$174 + shipping  | \$198 + shipping  |



| Name                      | Cotton Candy                             | CuBox  | Hawkboard  | IGEP v2   | IGEP COM Proton  |
|---------------------------|--|--|--|---|--|
| SoC                       | Samsung Exynos 4210                      | Marvell Armada 510 (88AP510)                           | TI OMAP-L138   | Ti DM3730   | DM3730 (optional OMAP3530)   |
| CPU                       | 1.2 GHz dual-core ARM Cortex-A9          | 800 MHz ARMv7  | 300-MHz ARM926EJ   | ARM Cortex A8 1GHz  | 1GHZ ARM CORTEX A8 (720Mhz for OMAP3530)                             |
| GPU                       | quad-core 200 MHz Mali-400 MP            | Vivante GC600  |  | SGX530 @ 200 MHz  | SGX 530 (200Mhz) (110Mhz for OMAP3530)                               |
| RAM                       | 1 GB                                     | 1 GB DDR3-800MHz                                       | 128 MByte  | 512 M   | 512 MBytes   |
| Nand Flash                | -  |  | 128 MByte  | 512 M   | 512 MBytes   |
| Video outputs             | HDMI with audio                          | HDMI 1.3   | VGA, Composite IN  | DVI-D, TFT Interface 24 bit   |  |
| Audio                     | HDMI audio                               | S/PDIF (optical output)                                | line in, out   | Stereo audio in / out   |  |
| USB                       | USB 2.0 host/device                      | 2 x USB, MicroUSB (console)                            | Host (1.1), OTG (2.0)  | host + Mini OTG host/slave  | 1 x USB 2.0 OTG  |
| Storage                   | MicroSD SDXC                             | MicroSD<br>1 x eSATA                                   | SATA   | MicroSD   | MicroSD  |
| Ethernet                  | -  | 1000baseT Ethernet                                     | 10/100 Mbps  | 10/100 Mb BaseT   | 10/100 Mb  |
| Wireless                  | Wifi 802.11 b/g/n<br>Bluetooth 2.1 + EDR | Infra-red receiver with LIRC support                   |  | Wifi 802.11 b/g<br>Bluetooth BC4 - Class 2.0                          |  |
| Other ports               |  | -  | VPIF, UPP, PRU, LCDC, UART(x2), SPI (x2), I2C (x1), eCAP, eHRPWM, GPIO, JTAG | 3 x UART, <b>Expansion boards available</b> , McBSP, McSPI, I2C, GPIO | JTAG, Expansion: USB, DDS, Camera, uart, SPI, McBSP, I2C, keypad ... |
| Power                     |  | 3 W  |  |   |  |
| Power source              | 5V (USB)                                 | 5V/2A DC   | 5V, 1.5A   | 5Vcc / 1.3A   | USB Powered  |
| Size                      | 80 mm x 25 mm x 10 mm                    | 55 x 55 x 42 mm  | 90mm x 100mm   | 65mm x 95mm   | 35x51 mm   |
| Weight                    | 21 g                                     | ~91 g  |  | 46 grams ?  |  |
| OS included               | -  | Ubuntu 10.04, Android 2.2                              |  |   |  |
| Supported OS              | Android Ubuntu                           | Linux kernel 2.6.x or later<br>Android 2.2.x and later | Ubuntu, Fedora, Impactlinux, ..  | Android, Angstrom, Ubuntu, ..   | Android, Angstrom, Ubuntu, ..  |
| Available for order today | No (Limited availability)                | No (sold out for today)                                | Usually "No Longer Stocked"  | Yes   | Yes  |
| Price                     | \$199 + shipping                         | \$135 + shipping                                       | \$161 + shipping   | €188 + shipping   | €160.00  |





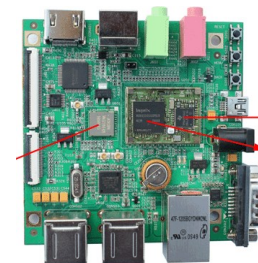
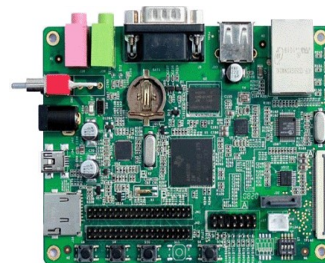
| Name                      | IGEP COM Module  | Gumstix Overo series                              | Origen Board                  | Nimbus               | Stratus                              |
|---------------------------|--|---|-------------------------------|----------------------|--------------------------------------|
| SoC                       | DM3730   | AM3703, DM3730,                                   | Exynos4210                    | Marvel Kirkwood 6281 | Marvel Kirkwood 6281                 |
| CPU                       | (optional OMAP3530)<br>1GHZ ARM CORTEX A8<br>(720Mhz for OMAP3530)   | OMAP3503, OMAP3530<br>ARM Cortex-A8<br>Up to 1GHz | 1.2GHz Dual Core<br>Cortex-A9 | 1.2 GHz              | 1.2 GHz                              |
| GPU                       | SGX 530 (200Mhz)<br>(110Mhz for OMAP3530)                            |   | Mali400 MP4                   |                      |                                      |
| RAM                       | 512 MBytes   | 512MB or 256MB                                    | DDR3 1GB                      | 512MB                | 512MB                                |
| Nand Flash                | 512 MBytes   | 0 - 512MB   |                               | 512MB                | 512MB                                |
| Video outputs             |  | Expansion Boards                                  | mini HDMI, LCD                |                      |                                      |
| Audio                     |  | Expansion Boards                                  | Headphone, Line, min IN       |                      |                                      |
| USB                       | 1 x USB 2.0 OTG  | Expansion Boards                                  | USB Device, Host              | USB 2.0 Host         | 2 USB 2.0 Host                       |
| Storage                   | MicroSD  | microSD   | 2 Port SD/MMC                 |                      |                                      |
| Ethernet                  |  | Expansion Boards                                  |                               | Gigabit              | Gigabit                              |
| Wireless                  | 802.11b/g ( 86w8686B1)<br>Bluetooth 2.0                              | some of Overo                                     | WiFi/Bleetooth Combo          |                      | 802.11 b/g<br>Bluetooth 2.1 + EDR    |
| Other ports               | Expansion: USB, DDS,<br>Camera, uart, SPI, McBSP,<br>I2C, keypad ... | <b>Expansion Boards</b>                           | RS232, JTAG, camera           |                      | Optional: Zwave<br>ZigBee (802.15.4) |
| Power                     |  |   |                               |                      |                                      |
| Power source              | USB Powered  | 5V  | 5V 2A                         | AC 100 - 240VAC, 13W | AC 100 - 240VAC, 18W                 |
| Size                      | 18 x 68,5 mm   | 58mm x 17mm x 4.2mm                               | 139mm x 116mm                 | 83mm x 52mm x 43mm   | 103mm x 88mm x 46mm                  |
| Weight                    |  |   |                               |                      |                                      |
| OS included               |  |   |                               | Debian               | Debian                               |
| Supported OS              | Android, Angstrom,<br>Ubuntu, ..                                     | Ubuntu, Android, ..                               | Android, Ubuntu, ..           |                      |                                      |
| Available for order today | Yes  | Yes   | No (Sold out)                 | Yes                  | Yes                                  |
| Price                     | €164.00  | \$115 - \$229 + shipping                          | \$199 + Shipping              | \$99 + Shipping      | \$130 - \$148 + Shipping             |



| Name                      | SheevaPlug dev kit (Basic)                      | GuruPlug Standard                               | GuruPlug Display  | DreamPlug                                       | D2Plug  |
|---------------------------|---|---|---|---|---|
| SoC                       | Marvel Kirkwood 6281                            | Marvel Kirkwood 6281                            | Marvell ARMADA 168  | Marvel Kirkwood 6281                            | Marvell PXA510                                  |
| CPU                       | 1.2 GHz ARM9E                                   | 1.2 GHz   | 800MHz  | 1.2 GHz   | 800MHz  |
| GPU                       |   |   |   |   |   |
| RAM                       | 512 MB  | 512 MB  | 512MB   | 512MB   | 1GB   |
| Nand Flash                | 512 MB  | 512 MB  | -   | 4 GB on board micro-SD                          |   |
| Video outputs             | -   | -   | HDMI  | -   | HDMI, VGA                                       |
| Audio                     | -   | -   | -   | Optical out, mic, headphone                     | Line Out, mic, optical out                      |
| USB                       | USB 2.0   | 2x USB 2.0                                      | 4 x Host, 1 x OTG   | 2 x USB 2.0                                     | 2 x USB 2.0 Host, 1 Device                      |
| Storage                   | SDIO  | MicroSD   | MicroSD Slot (w/ 4GB card)<br>Internal MicroSD card – 8GB | 1 x eSATA 2.0, 1 x SD                           | SD, 1 x eSATAp<br>Powered eSATA & USB combo     |
| Ethernet                  | Gigabit   | Gigabit   | 10/100 Mbps   | 2 x Gigabit                                     | 10/100/1000 Mbps                                |
| Wireless                  | -   | Wi-Fi 802.11 b/g/n<br>Bluetooth 3.0             | -   | WiFi 802.11 b/g/n<br>Bluetooth 3.0              | 802.11 b/g/n Wi-Fi<br>Bluetooth 3.0 + HS        |
| Other ports               | JTAG mini USB                                   | JTAG, UART                                      | Serial Port over USB                                      | UARD, JTAG                                      | Console port (USB), JTAG                        |
| Power                     | 2.3 W idle<br>7.0 W full load                   |   |   | under 5 watts                                   |   |
| Power source              | 100-240VAC, 5V/3.0A Max                         | 100-240VAC, 5V/3.0A Max                         | 100-240VAC, 5V/3.0A Max                                   | 5V3A  | 100-240VAC, 5V/3.0A Max                         |
| Size                      | 110 x 69.5 x 48.5 mm                            | 95mm x 65mm x 48.5 mm                           | 110 x 69.5 x 48.5 mm                                      | 170 x 82 x 33mm                                 | 170mm X 82mm X 33mm                             |
| Weight                    |   |   |   |   |   |
| OS included               |   |   |   |   |   |
| Supported OS              | Ubuntu/Debian                                   | Ubuntu/Debian                                   | Ubuntu/Debian   | Ubuntu/Debian                                   | Ubuntu/Debian                                   |
| Available for order today | globalscaletechnologies does not ship to Russia | globalscaletechnologies does not ship to Russia | globalscaletechnologies does not ship to Russia           | globalscaletechnologies does not ship to Russia | globalscaletechnologies does not ship to Russia |
| Price                     | \$101.99 + Shipping                             | \$103 + Shipping                                | \$199 + Shipping  | \$163 + Shipping                                | \$253 + Shipping                                |



|                           |   |   |                                    |                                     |   |
|---------------------------|---|---|------------------------------------|-------------------------------------|---|
| Name                      | Trim-Slice series                             | Snowball  | i.MX53 Quick Start Board           | Pineriver H24/MiniX                 | Smallart UHOST                            |
| SoC                       | NVIDIA Tegra 2                                | STEricsson Nova A9500   | Freescale i.MX535                  | A10                                 | Allwinner A10                             |
| CPU                       | 1 GHz   | 1GHz Dual Cortex A9   | 1GHz                               | 1.2GHz                              | 1GHz Cortex-A8                            |
| GPU                       |   | Mali 400  |                                    | Mali400                             | Mali400                                   |
| RAM                       | 1 GB DDR2-667                                 | 1GByte  | 1GB of DDR3                        | 512MB                               | 1 GB                                      |
| Nand Flash                | -   | 4 / 8GByte e-MMC  |                                    | 4GB                                 | 4 GB                                      |
| Video outputs             | HDMI, optional DVI                            | HDMI, CVBS  | VGA, LVDS, optional HDMI           | HDMI, CVBS                          | HDMI                                      |
| Audio                     | S/PDIF 5.1, Stereo line-out, in               | out, in   | mic, headphone                     | stereo                              | Mic jack                                  |
| USB                       | 4 USB 2.0, Micro USB device                   | USB OTG   | 2 USB, 1 device                    | host, OTG                           | host, OTG                                 |
| Storage                   | SD, microSD, SATA.<br>optional SSD or 2.5 HDD | Micro-SD  | SD/MMC; microSD,<br>SATA?          | TF                                  | microSD                                   |
| Ethernet                  | Gigabit                                       | 10/100Mbps  | 10/100                             | -                                   | -   |
| Wireless                  | optional 802.11n<br>optional Bluetooth 2.0    | optional 802.11 b/g/n,<br>Bluetooth 2.1+EDR, GPS                          |                                    | Bult-in WIFI<br>(removable antenna) | 802.11 b/g/n                              |
| Other ports               | optional video in<br>JTAG, UART               | Li-Ion Charger, RS232, JTAG,<br>Expansion Connectors,<br>A lot of sensors | JTAG, UART<br>3-axis Accelerometer | Remote controller                   | Ukey                                      |
| Power                     | 2-6W  |   |                                    |                                     |   |
| Power source              | 12V DC (8V-16V tolerant)                      | DC IN +5V   | 5V, 2A                             | DC5V                                | usb powered                               |
| Size                      | 130mm x 95mm x 15mm                           | 85mm x 85mm   | 7,62mm x 7,62mm                    | 60*60*13 mm                         | 120mm x 50mm x 13mm                       |
| Weight                    |   | 54g   |                                    | 0.05kg ?                            |   |
| OS included               |   |   |                                    | Android 2.3/4.0                     | android 4.0                               |
| Supported OS              | Android, Ubuntu, ..                           | Linaro (Ubuntu, Android)  | Linaro (Ubuntu, Android)           | Puppy Linux,<br>Ubuntu, ..          | Puppy Linux, Ubuntu, ..                   |
| Available for order today | Does not ship to Russia                       | Yes?  | Yes?                               | Yes                                 | Yes (UHOST)<br>Preorders (Oval Elephant)  |
| Price                     | \$213 - \$338 + Shipping                      | 144.84 € - 322.57 € + shipping  | \$149 + shipping                   | \$77 with shipping                  | \$89 (512MB), \$95 (1GB)<br>with shipping |



|                           |                          |  |   |  |   |
|---------------------------|--------------------------|--|---|--|---|
| Name                      | Genesi Efika MX Smarttop | Embest DevKit8600  | Embest SBC8018  | Embest SBC8530                         | Embest DevKit8500D                        |
| SoC                       | Freescal i.MX515         | TI's Sitara AM3359                                       | TI AM1808   | TI DM3730                              | DM3730                                    |
| CPU                       | ARM Cortex-A8 800MHz     | 720MHz ARM Cortex-A8                                     | 375MHz ARM926EJ-S   | 1GHz ARM Cortex-A8                     | 1GHz ARM Cortex-A8                        |
| GPU                       |                          | SGX530   |   |  |   |
| RAM                       | 512MB                    | 512MBytes  | 128MByte  | 512MByte                               | 512MB                                     |
| Nand Flash                | 8GB                      | 512MBytes  | 128MByte  | 512MByte                               | 512MB                                     |
| Video outputs             | HDMI                     | TFT LCD, VGA via module                                  | LCD/Touch Screen interface  | HDMI, LCD, S-Video                     | DVI, LCD, S-Video                         |
| Audio                     | headset, speaker         | in, out  | mic in, line out  | in, out                                | in, out                                   |
| USB                       | 2x USB 2.0               | USB2.0 OTG, host   | USB2.0 OTG, host  | USB2.0 OTG, host                       | one OTG, 4 host                           |
| Storage                   | SDHC                     | TF card slot   | TF card slot  | TF card slot                           | TF card slot                              |
| Ethernet                  | 10/100Mbit/s             | 10/100/1000Mbps  | 10/100Mbps  | 10/100Mbps                             | 10/100Mbps                                |
| Wireless                  | 802.11 b/g/n WiFi        | WiFi/Bluetooth Module                                    |   | WiFi/Bluetooth Module                  | WiFi Module<br>GPS Module, ..             |
| Other ports               |                          | Debug, serial, RS485, CAN, GPMC, JTAG, ADC, SPI, I2C, .. | Two Camera interfaces, extension connectors (SPI, I2C, McBSP, UART, GPIO), .. | a lot                                  | a lot                                     |
| Power                     |                          |  | 0.22A @ 5V  | 0.31A @ 5V                             |   |
| Power source              |                          | 12V  | 5V  | 5V                                     | 5V  |
| Size                      | 160x115x20mm             | 130mm x 80mm   | 112.24mm x 82.29mm  | 86mm x 86mm                            | 136.2mm x 105.3mm                         |
| Weight                    | 250 grams                |  |   |  |   |
| OS included               | Ubuntu                   |  |   |  |   |
| Supported OS              |                          | Linux 3.1.0, Android 2.3 and WinCE 7                     | Linux2.6.33 and WinCE 6.0   | Linux2.6.32, Android 2.2 and WinCE 6.0 | Linux2.6.32, Android 2.2 and WinCE 6.0.15 |
| Available for order today | Discontinued             | accept orders  | yes   | yes                                    | yes                                       |
| Price                     | 99.71 EUR + shiping      | \$189 + shipping   | \$99 + shipping   | \$199 + shipping                       | \$199 + shipping                          |



Rumor: Cortex A8@1.2Ghz is 8 time faster than ARM11@700MHz

Note: Panda, IGEP, Gumstix has a lot of periphery via expansion boards

Embest's Single Board Computer: SBC9261-I, SBC6000X, SBC6300X, SBC6020, SBC6045, SBC6245, SBC6345, SBC6845, SBC2416-I, SBC2440-III, SBC2410-III, SBC2100, SBC8530, SBC8018, SBC8100, SBC8100 Plus, SOC8200

Embest's Evaluation Boards: DevKit8600, DevKit8500D, DevKit8000, DevKit7000, DevKit3250, DevKit1207, S3CEV40, STDV710C, STDV711F, STDV730F, STDV750F, ATEBSAM7S, ATEB40x

Page created by userid: omgfire; mailserver: yandex.ru