

Information Sharing Governance Architecture

- Secure, Robust and Scaleable

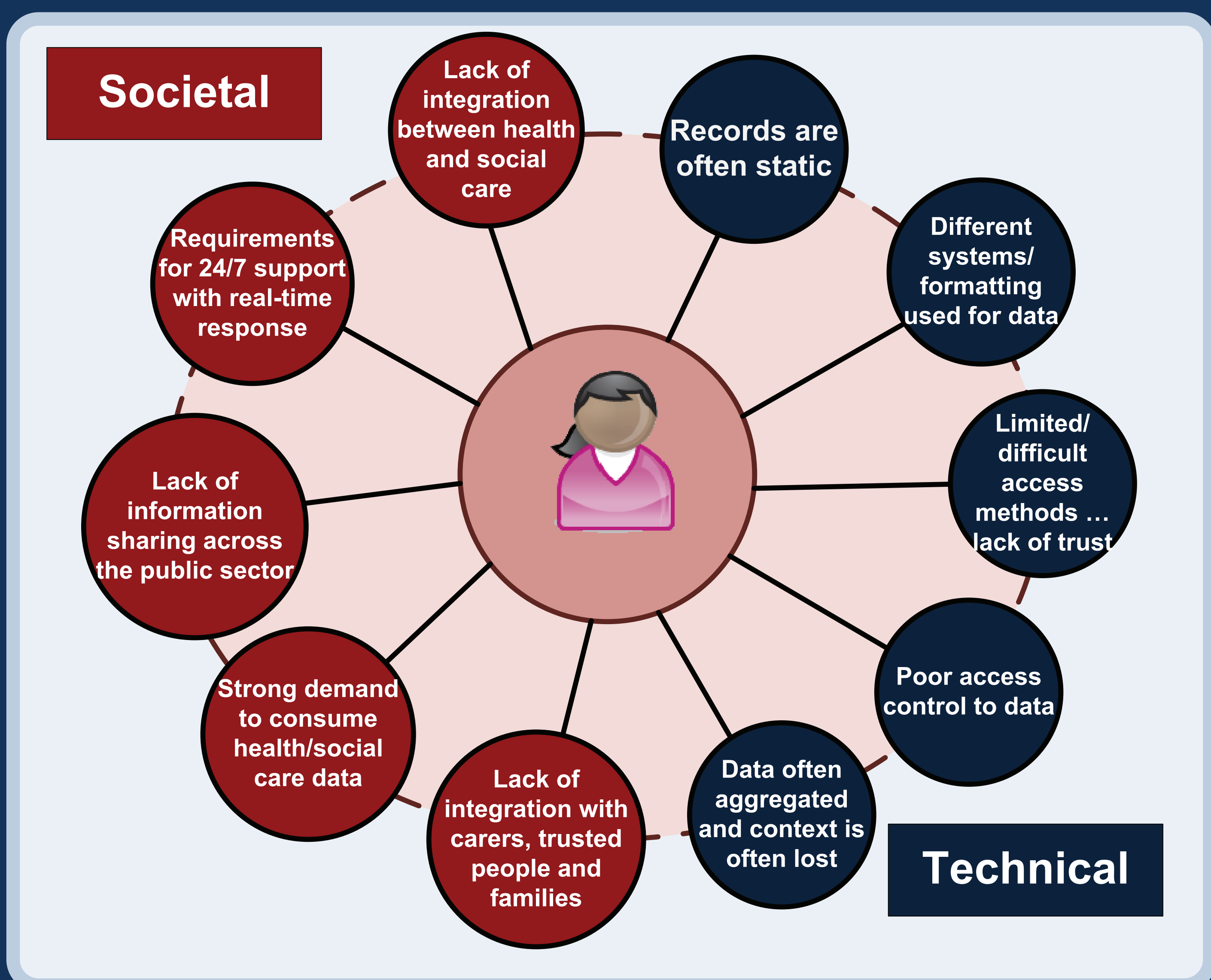


Who are we?

Edinburgh Napier University
research team funded by Scottish
Enterprise Proof-of-Concept
grant.

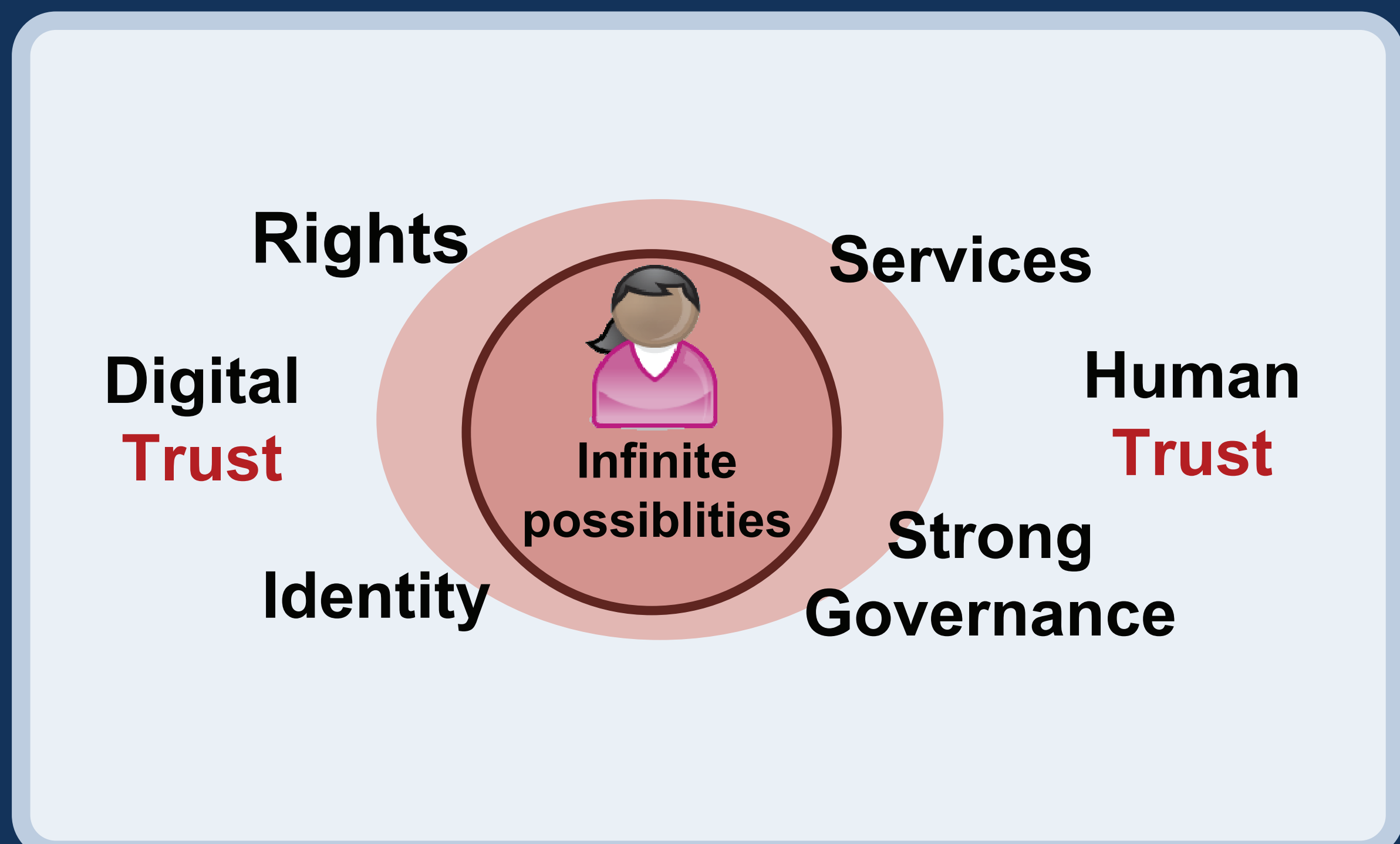
What's the issue?

A general lack of
formality of information
sharing ... both from
social and technical
aspects.



Who will use it?

safi.re is defined into areas which
require strong inter-domain sharing,
including health care and child
protection, but can be applied into
other areas such as finance and IP
protection.



How can Governance be applied in my company?

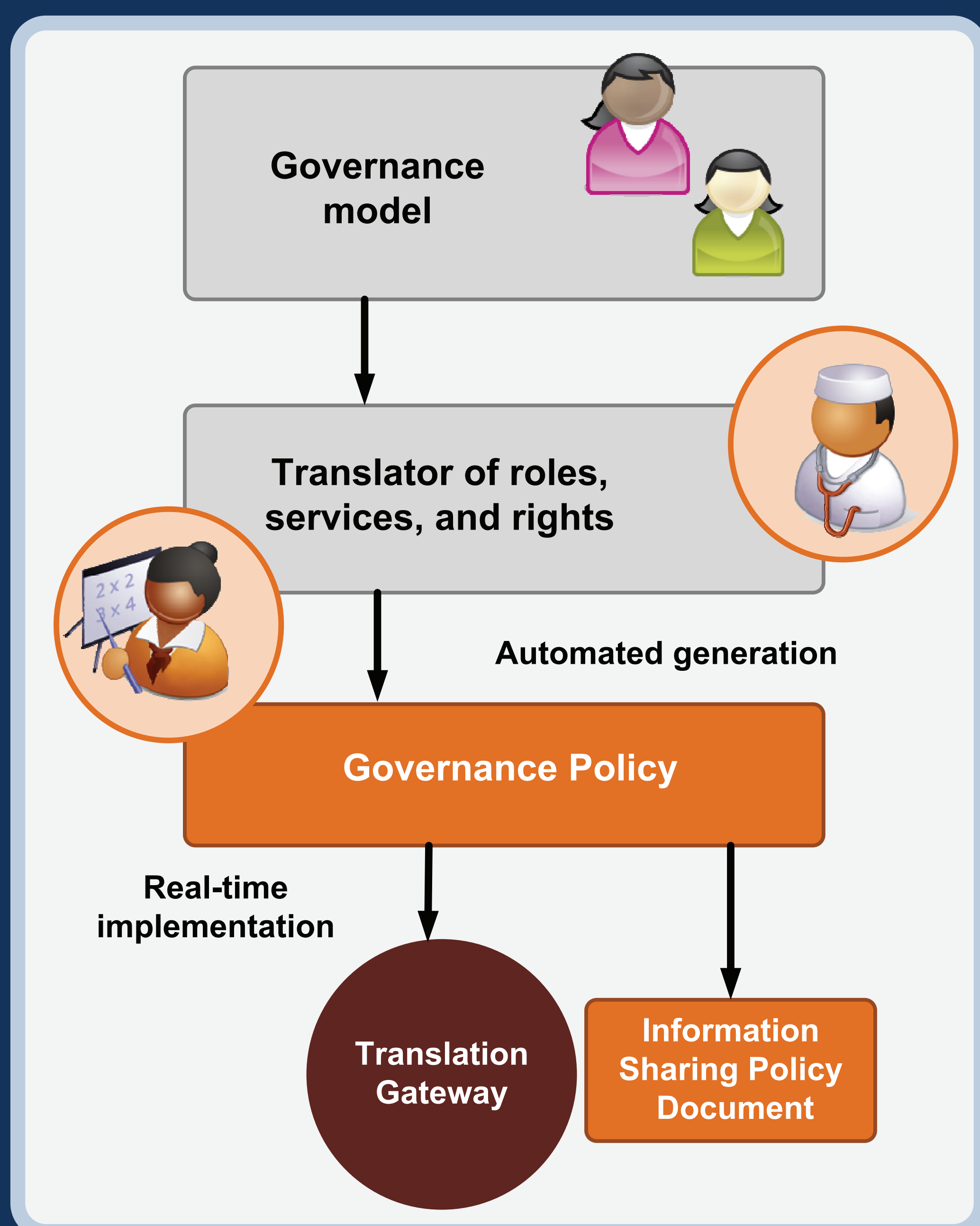
safi.re supports the end-to-end design, modelling and
implementation of policy into aspects of workflow and business
processes.

Features:

- Governance Modelling.
- Dynamic Control of policy.
- Federated Identity.
- Real-time control of sharing.

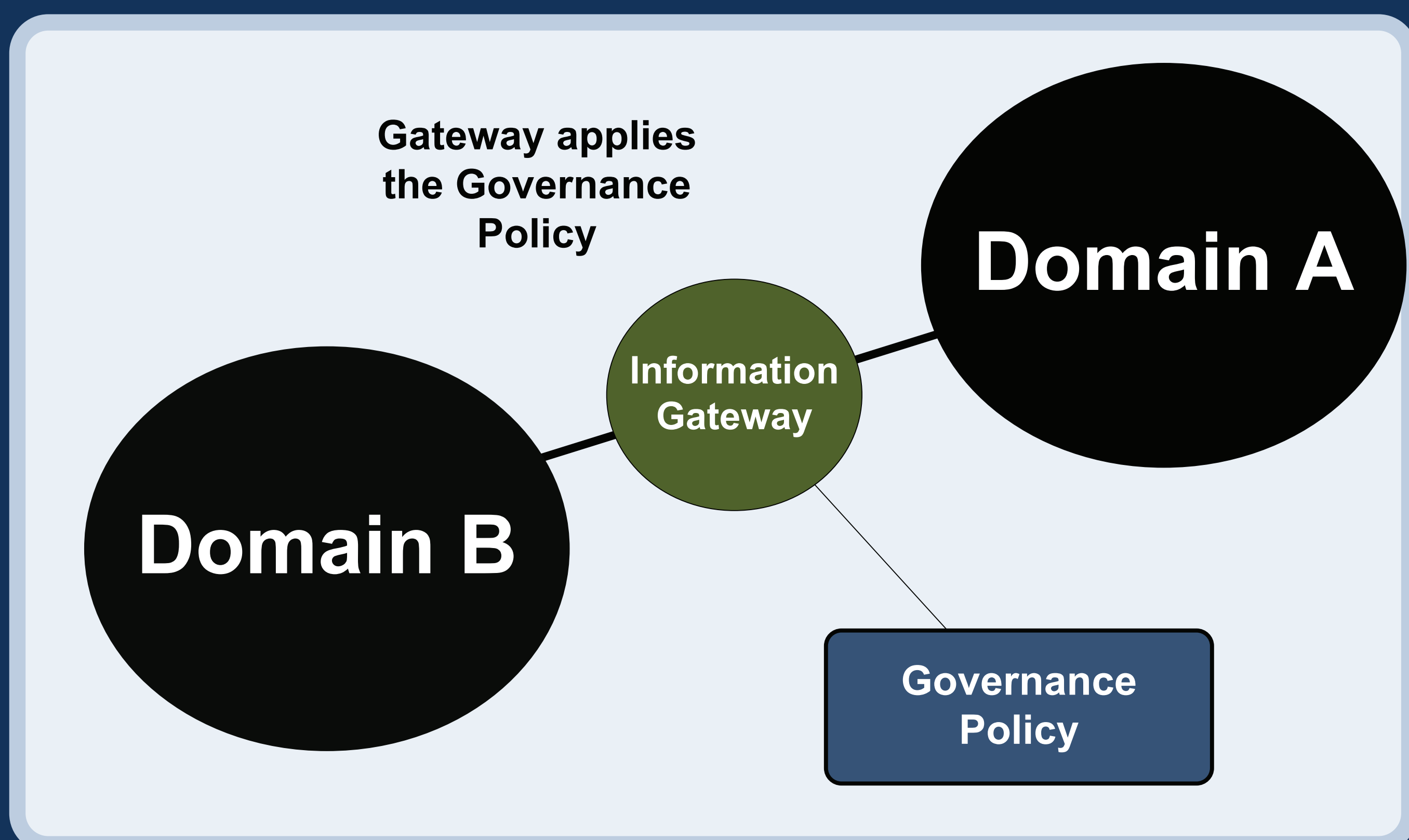
Benefits:

- IP Protection.
- Reduced Risks.
- Improved Collaboration.
- Role and Relationship Access.
- Audit Trails.



How does it work?

Every aspect of the information sharing is defined with a
governance policy,
which is then
implemented on a
gateway routing
element



What is it?

Information Sharing Architecture with strong Governance
with rights and identities defined within and between
domains.