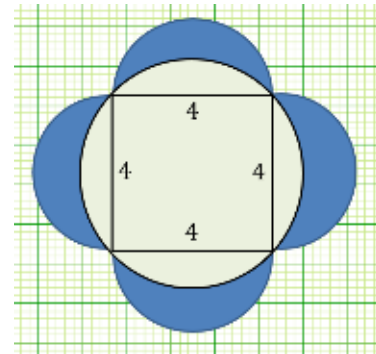


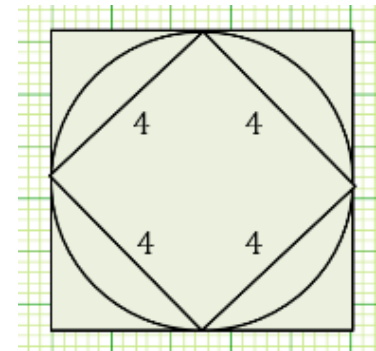
Problem Solving #3

1. Simplify $\left[\frac{5(x-y)}{y-x}\right]^2$.

2. Find the area of the shaded region.



3. Given the two squares and the circle, find the area of the circle.

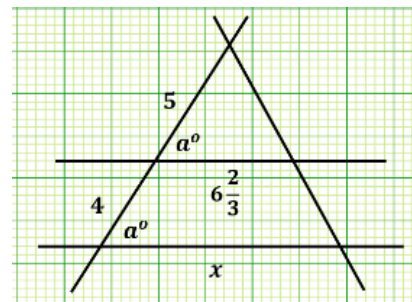


4. Your commute to work is 18 miles on the freeway. The speed limit on the freeway is 65 mile per hour. You are 5 minutes late leaving your home to get to work on time. You decide to drive 80 miles per hour and risk getting a ticket in order to get to work on time. How much time will you save by speeding? Will you make it to work on time?

5. The drive from Phoenix, AZ to San Diego, CA is 355 miles. If you decide to risk getting a speeding ticket and drive 85 mile per hour rather than the speed limit of 65 miles per hour, how much time would you save? Give your answer to the nearest minute.

6. Simplify $\sqrt[18]{27^6}$.

7. Determine the value of x using the figure.



8. Simplify $\left[\frac{5(x-y)}{y-x}\right]^2$.

Video Key

1. <https://www.youtube.com/watch?v=nqGAVqpnjXA>
2. https://www.youtube.com/watch?v=yYsItGkX_QU
3. <https://www.youtube.com/watch?v=arG8PEClmA0>
4. <https://www.youtube.com/watch?v=KysQV5jMmFE>
5. <https://www.youtube.com/watch?v=wa5mpO6ixKY>
6. <https://www.youtube.com/watch?v=OyULwjHjGKU>
7. <https://www.youtube.com/watch?v=3f4vWNS8nas>
8. <https://www.youtube.com/watch?v=nqGAVqpnjXA>

Created by James Sousa
Website: mathispower4u.com

