

## QUICK GUIDE

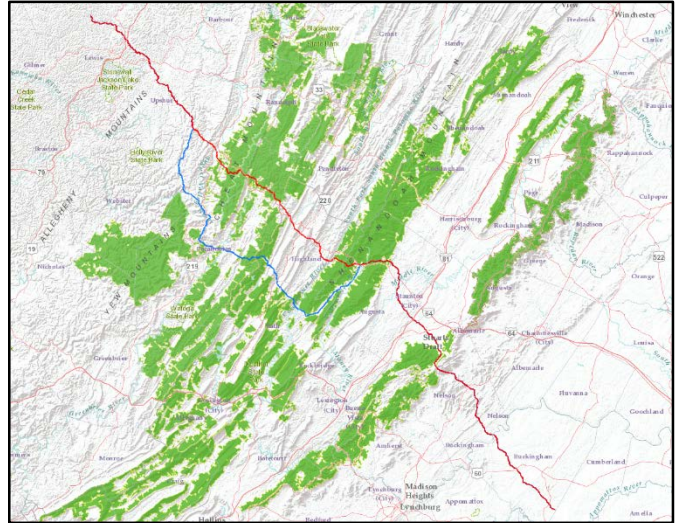
# Atlantic Coast Pipeline – Environmental Mapping System

The ACP-EMS is an online interactive map depicting environmental risks and sensitivities associated with the proposed Atlantic Coast Pipeline.

The purpose of the ACP-EMS is to organize and provide access to environmental information and to support engagement in ACP permitting and oversight. The geographic focus of the ACP-EMS includes approximately 200 miles of the western mountainous and upland section of the proposed pipeline

Link to access the online map: [ACP-EMS](#).

The ACP-EMS is a work in progress undertaken by the [Dominion Pipeline Monitoring Coalition](#) and partner organizations. We invite suggestions and collaboration.



## General notes for map use:

- When the map first loads it displays the proposed 10/30/15 pipeline route, the proposed 2/16/16 alternative route, and county boundaries. The initial background is “Imagery with Labels.”
- The tools in the upper-left corner of the map allow zooming-in (+) and zooming-out (-). Select the home icon to restore the initial map view.
- To pan the map image, click and hold the left mouse button and drag the cursor.
- The tools in the upper-right corner of the map include options to change content.
  - The Legend tool displays the map symbology for selected layers and classes within layers.
  - The Layer List tool displays and allows selection of available layers. There are options to set layer order and transparency.
  - The Basemap Gallery tool allows selection between map backgrounds, including topographic maps, satellite imagery, road maps, and terrain maps.
- Clicking individual layer features displayed on the map will open pop-up windows with layer information, including links to other information pages and sites.

