

# K&N TYPHOON INTAKE SYSTEMS

## INSTALLATION INSTRUCTIONS

**69-2021**

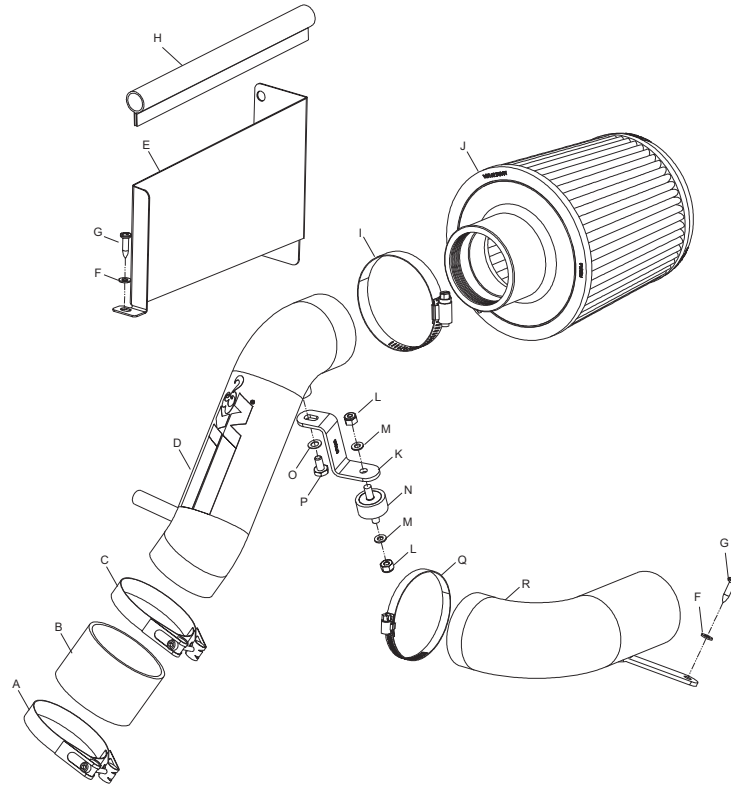
**MINI**

**2002 Cooper S**

**I4-1.6L Supercharged**

**TOOLS NEEDED:**

- Pliers
- Diagonals
- Flat Blade Screwdriver
- 10mm end wrench
- 4mm Allen Wrench
- Ratchet
- 6" Extension
- 8mm Socket
- 10mm Socket



**Parts List**

Description	Qty.	P/N
A Hose Clamp, #300	1	08532
B Silicone Hose, Blue	1	08195*
B Silicone Hose, Black	1	08441*
C Hose Clamp, #275	1	08533
D Typhoon Intake Tube	1	27122
E Heat Shield	1	07301
F 5mm Flat Washer	2	08212
G #10 Screw	2	07747
H Edge Trim 9"L	1	102465
I Hose CLamp, #44	1	08577
J X-Stream Filtercharger	1	RX-4950
K "Z" Bracket	1	070058
L 6mm Nylock Nut	2	07512
M 6mm Flat Washer	2	08269
N 6mm Rubber Mounted Stud	1	07027
O 6mm Wave Washer	1	08277
P 6mm Bolt, 12mm L	1	07727
Q Hose Clamp, #40	1	08556
R Typhoon Air Inlet Tube	1	27123

\* You will receive one Blue or one Black silicone hose depending on the color of the kit ordered.

**TO START:**

1. Turn the ignition OFF and disconnect the vehicle's negative battery cable.



2. Using a pair of dikes or pliers unclip the stock hose clamp at the air cleaner as shown.



3. Pull the stock intake tube off the air cleaner as shown.



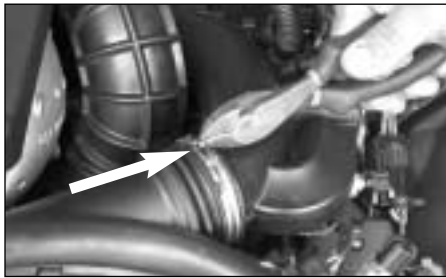
4. Pull upward to remove the battery terminal from the side of the air cleaner as shown.



5. Loosen the two bolts on the front of the air cleaner assembly as shown.



6. Slide the upper air cleaner assembly backwards, then, pull upward to remove the upper air cleaner assembly as shown.



7. Using a pair of dikes or pliers unclip the hose clamp on the air inlet duct as shown.



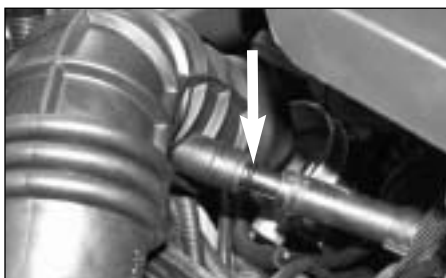
8. Remove the air cleaner inlet duct as shown.



9. Remove the throttle body electrical connection as shown.



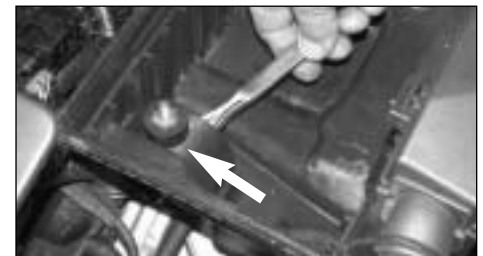
10. Using a pair of dikes or pliers, unclip the stock hose clamp on the stock intake tube at the throttle body as shown.



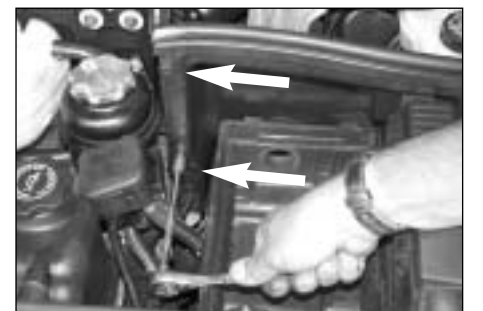
11. Pull upward on the stock intake tube, then, using a pair of pliers disconnect the stock crank case vent hose from the stock intake tube as shown.



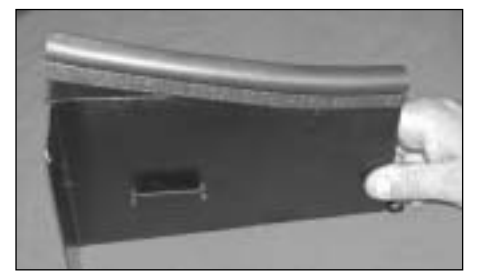
12. Remove the stock intake tube as shown.



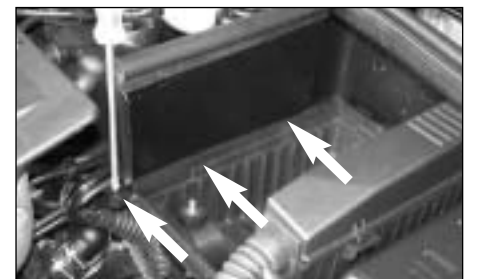
13. Secure the provided rubber mounted stud to the air inlet flange on the lower air cleaner assembly using the provided hardware as shown.



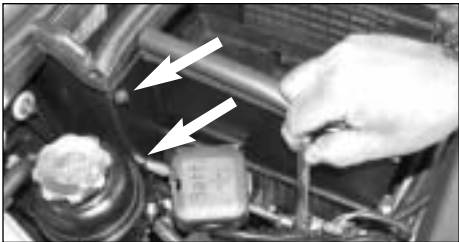
14. Remove the two stock bolts on the bulkhead as shown.



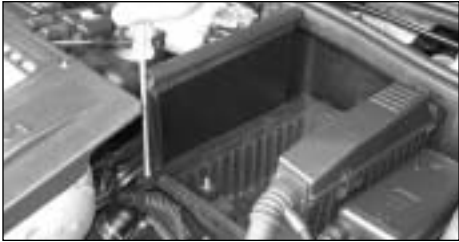
15. Install the provided edge trim onto the K&N heat shield as shown.



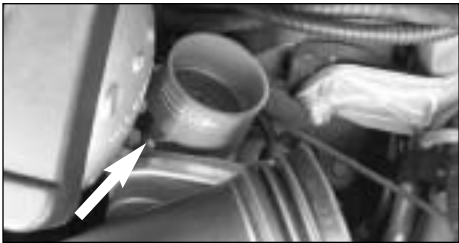
16. Install the heat shield onto the top edge of the lower air cleaner assembly, then, secure the front tab of the heat shield to the lower air cleaner assembly using the provided screw as shown.



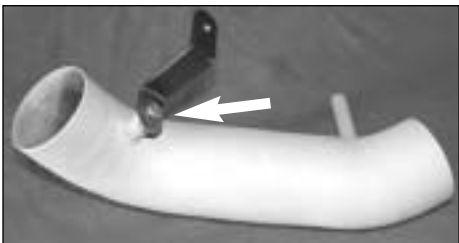
17. Using the two screws from step 14, secure the heat shield to the bulkhead as shown.



18. Tighten all hardware on the heat shield as shown.



19. Install the silicone hose and the #300 hose clamp onto the throttle body and tighten as shown.



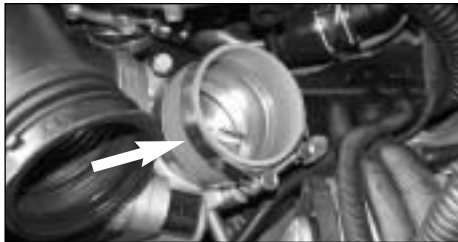
20. Secure the provided "Z" bracket onto the threaded boss on the K&N Typhoon intake tube using the provided hardware as shown.

**NOTE:** The slotted end of the bracket is bolted to the threaded boss.

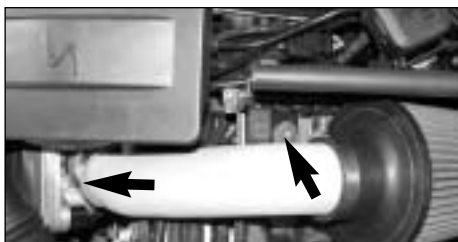
**NOTE:** Before installing the "Z" bracket, inspect the inside of the tube for any debris, then clean the inside out with water and a towel. Inspect the tube one more time before proceeding to the next step.



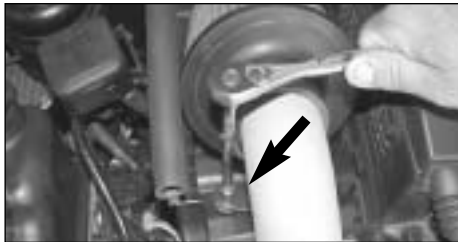
21. Install the K&N X-Stream Filtercharger onto the K&N Typhoon intake tube and tighten with the provided hose clamp as shown.



22. Install the smaller #275 hose clamp onto the silicone hose as shown.



23. Install the intake tube assembly into the silicone hose at the throttle body, then, line up the bracket with the rubber mounted stud as shown.



24. Using the provided hardware secure the "Z" bracket to the rubber mounted stud as shown.  
**NOTE:** Adjust for best fit and clearance, then, tighten all hose clamps and hardware.



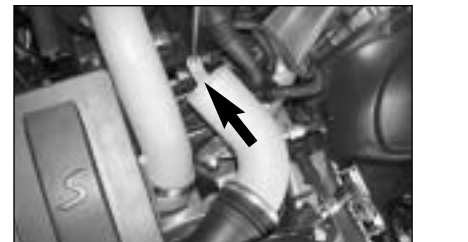
25. Reconnect the stock crank case vent hose to the vent on the Typhoon intake tube as shown.



26. Slide the battery terminal onto the locating tab on the heat shield as shown.



27. Reconnect the throttle body electrical connection as shown.

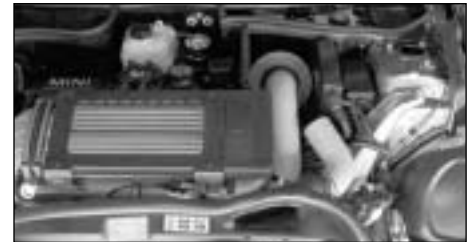


28. Install the new air inlet tube into the stock air inlet duct, then, line up the bracket with the hole on the lower air cleaner assembly and secure with the provided screw as shown.

**NOTE:** Before installing the inlet tube, inspect the inside of the tube for any debris, then clean the inside out with water and a towel. Inspect the tube one more time before proceeding to the next step.



29. Tighten the provided hose clamp on the air inlet duct as shown.



30. Reconnect the negative battery cable, then double check to make sure everything is tight and properly positioned before starting the vehicle.

#### ROAD TESTING:

1. Start the engine with the transmission in neutral or park, and the parking brake engaged. Listen for air leaks or odd noises. For air leaks secure hoses and connections. For odd noises, find cause and repair before proceeding. This kit will function identically to the factory system except for being louder and much more responsive.
2. Test drive the vehicle. Listen for odd noises or rattles and fix as necessary.
3. If road test is fine, you can now enjoy the added power and performance from your kit.
4. K&N suggests checking the Filtercharger element periodically for excessive dirt build-up. When the element becomes covered in dirt (or once a year), service it according to the instructions on the Recharger service kit, part number 99-5000 or 99-5050.