

K&N TYPHOON INTAKE SYSTEMS

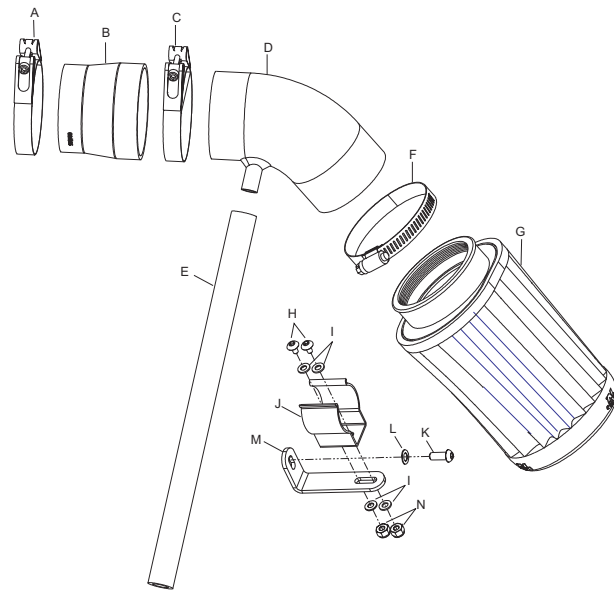
INSTALLATION INSTRUCTIONS

69-2020

MINI
2002 Cooper
I4-1.6L

TOOLS NEEDED:

Pliers
 Needle Nose Pliers
 Dikes
 Flat Blade Screwdriver
 3mm Allen Wrench
 4mm Allen Wrench
 Ratchet
 6" Extension
 8mm Socket
 12mm Socket



Parts List

Description	Qty.	P/N
A Hose Clamp, #275	1	08533
B Silicone Hose, Blue	1	084015*
B Silicone Hose, Black	1	084016*
C Hose Clamp, #300	1	08532
D Typhoon Intake Tube	1	27107
E Silicone Hose, 1/2"ID x 12"L	1	087031
F Hose Clamp, #44	1	08577
G X-Stream Filtercharger	1	RX-5090
H 5mm Button Head Screw, 12mm L	2	07734
I 5mm Flat Washer	4	08212
J Spring Holder, Black	1	08308
K 6mm Button Head Screw, 12mm L	1	07794
L 6mm Flat Washer	1	08277
M "L" Bracket	1	070742
N 5mm Nylock Hex Nut	2	07507

* You will receive one Blue or one Black silicone hose depending on the color of the kit ordered.

TO START:

1. Turn the ignition OFF and disconnect the vehicle's negative battery cable.



2. Remove the stock crank case vent hose from the cam cover as shown.



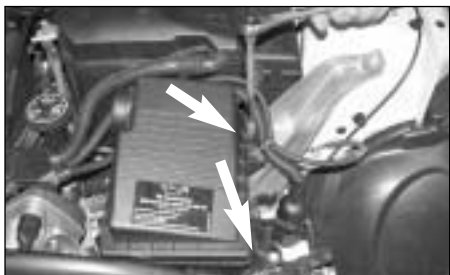
3. Using a pair of dikes cut the factory hose clamps on the stock intake tube at the throttle body and at the air cleaner assembly as shown.



4. Remove the stock intake tube as shown.



5. Remove the Fuel Injection control module from the bracket on the air cleaner assembly as shown.



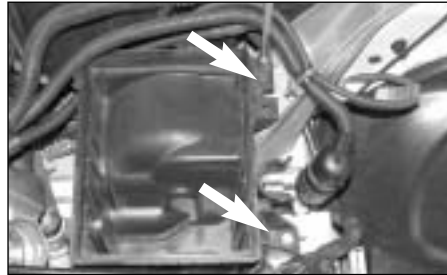
6. Remove the two bolts that secure the air cleaner top assembly as shown.



7. Remove the air cleaner top assembly as shown.



8. Using a pair of needle nose pliers unclip the electrical harness from the air cleaner base assembly as shown.



9. Remove the two bolts that secure the air cleaner base assembly as shown.



10. Remove the air cleaner base assembly as shown. **NOTE:** Pull firmly upwards while moving the assembly in a side to side motion to remove.



11. Secure the silicone step hose and hose clamps onto the throttle body as shown.



12. Install the X-Stream Filtercharger onto the Typhoon intake tube as shown. **NOTE:** Before installing the Filtercharger, inspect the inside of the tube for any debris, then clean the inside out with water and a towel. Inspect the tube one more time before proceeding to the next step.



13. Slide the Typhoon intake tube into the silicone step hose and adjust for best fit and clearance as shown. **NOTE:** Adjust the filter so the flat edge on the base of the filter is horizontal for maximum hood clearance.



14. Install the provided silicone hose onto the crank case vent on the cam cover, then, attach the other end onto the vent on the Typhoon intake tube as shown.



15. Assemble the provided "L" bracket and the provided fuel injection module bracket using the provided hardware as shown.



16. Install the fuel injection module bracket assembly to the original air cleaner mounting point using the provided hardware as shown.



17. Slide the fuel injection module into the bracket as shown.



18. Reconnect the negative battery cable and double check to make sure everything is tight and properly positioned before starting the vehicle.

ROAD TESTING:

- Start the engine with the transmission in neutral or park, and the parking brake engaged. Listen for air leaks or odd noises. For air leaks secure hoses and connections. For odd noises, find cause and repair before proceeding. This kit will function identically to the factory system except for being louder and much more responsive.
- Test drive the vehicle. Listen for odd noises or rattles and fix as necessary.
- If road test is fine, you can now enjoy the added power and performance from your kit.
- K&N suggests checking the Filtercharger element periodically for excessive dirt build-up. When the element becomes covered in dirt (or once a year), service it according to the instructions on the Recharger service kit, part number 99-5000 or 99-5050.