



KONICA MINOLTA

Konica Minolta Printing Solutions Europe B.V.
Support Department
Website: www.konicaminolta.net/printer/

Installing Konica Minolta Crown printers on Mac OS 10.3 (Panther)

Information Level: 4

(2 = Semi-confidential, Konica Minolta, internal use only, 3 = Service Partners/Distributors/First Line usage only. 4 = General Information, may be send to end-users.)

Printer involved: All Printers
Operating system: Mac Os 10.3 (Panther)
Application: Printer Setup Utility
Driver version: n.a.

Using Macintosh Mac OS 10.3 (Panther) with Konica Minolta printers

At this time, PostScript printer support under Macintosh OS X is limited. Konica Minolta printers can be used with OS X, but all of their advanced printing features may not be available. Advanced printing features are still available under Macintosh OS 9.1, or when printing from the Classic Environment in OS X.

Konica Minolta, like most printer manufacturers, develops a PostScript Printer Description file, or PPD, for every printer it produces for the Macintosh. The Macintosh Operating System includes a PostScript printer driver (LaserWriter) that uses this PPD to provide support for features such as input bins, paper sizes, and advanced color management. The Apple PostScript printer driver currently included in Mac OS X (10.0.4) has limited support for PPDs compare to previous versions of Mac OS. Apple has assured Konica Minolta, and other manufacturers that they are working to improve PPD support in future releases of OS X. However, which specific features will be added to their driver and when these features will become available is not yet known.

Konica Minolta is pleased to be working closely with Apple to develop printing support for Mac OS X and looks forward to providing printing solutions to Macintosh users for years to come. For now, Mac OS X users should periodically check Apple's web site for software updates.

MAC OS 10.3 (PANTHER) gives the possibility to configure options like duplexer, input bins, output bins, etc.



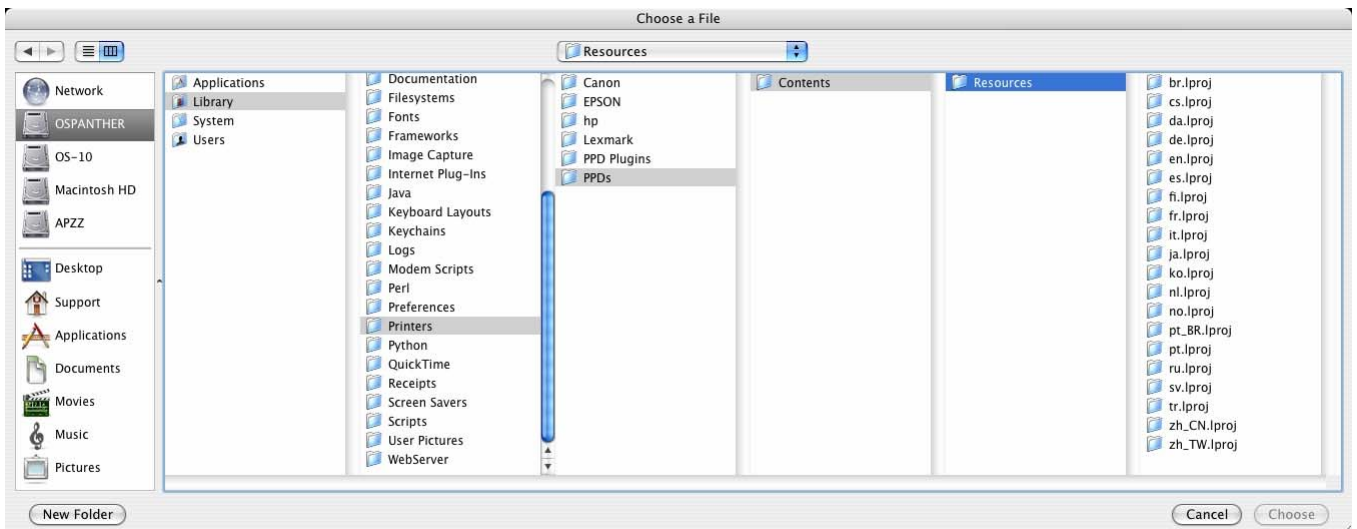
KONICA MINOLTA

Installing a Konica Minolta Crown printer on Mac OS 10.3 (Panther)

Copy the PPD file(s) for the printer(s) you want to install in the following folder on your system:

Macintosh HDD / Library / Printers / PPDs / Contents / Resources / Language

Note: If you updated the Mac OS system from version 10.1.x, the PPDs are in the wrong directory. The Mac OS system will not be able to find/link the PPDs automatically.



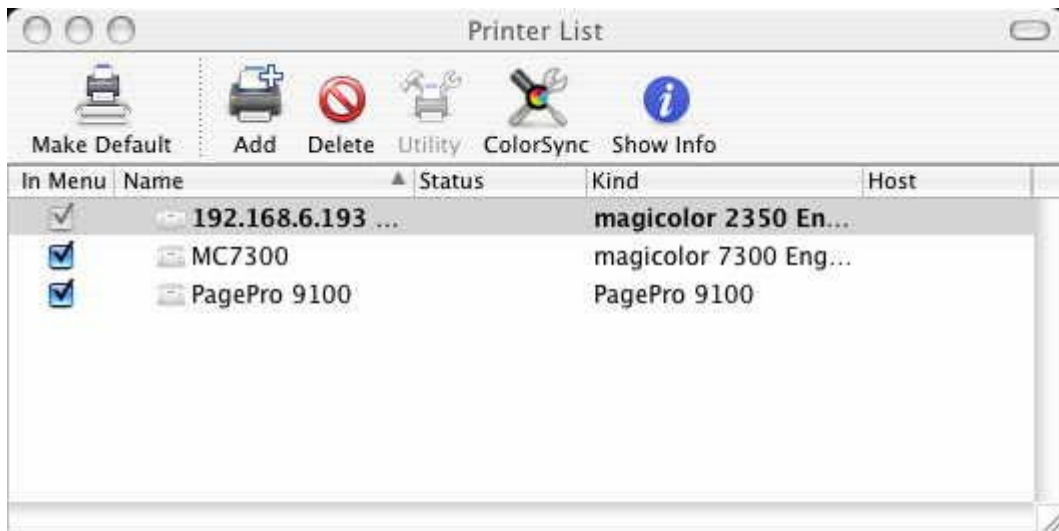
Notes:

1. In order to be able to copy files in the directory above you need to be logged in with the username 'root'. (Enter the administrator password)
2. Your PPDs should be placed in the 'Language of your choice' folder (en.lproj).



KONICA MINOLTA

Open 'Printer Setup Utility'. This MacOSX utility can be found on your system:
MacOSX HDD / Applications / Utilities / Printer Setup Utility



Installed printers will be listed in the 'Printer Setup Utility' window.

Select from the menu: Printer → Show info to configure the installed printer options.

Click on 'Add Printer' and choose a communication method.



Depending on the communication method chosen in this step, see either 'IP Printing', 'Printing via AppleTalk' or 'Printing via USB' below.



KONICA MINOLTA

IP Printing:

IP Printing

Printer Type: LPD/LPR

Printer Address:

Queue Name:
Leave blank for default queue

Printer Model: magicolor_7300_EN.PPD

Cancel Add

Fill in the following fields:

In Printer Address enter your printers IP address.

In 'Queue Name' enter any queue name. (For example MC7300 for the Magicolor 7300)

In 'Printer Model' select the correct PPD for you printer.

IP Printing

Printer Type: LPD/LPR

Printer Address: 192.168.6.193
Complete and valid address.

Queue Name: NAME
Leave blank for default queue

Printer Model: Generic

Cancel Add

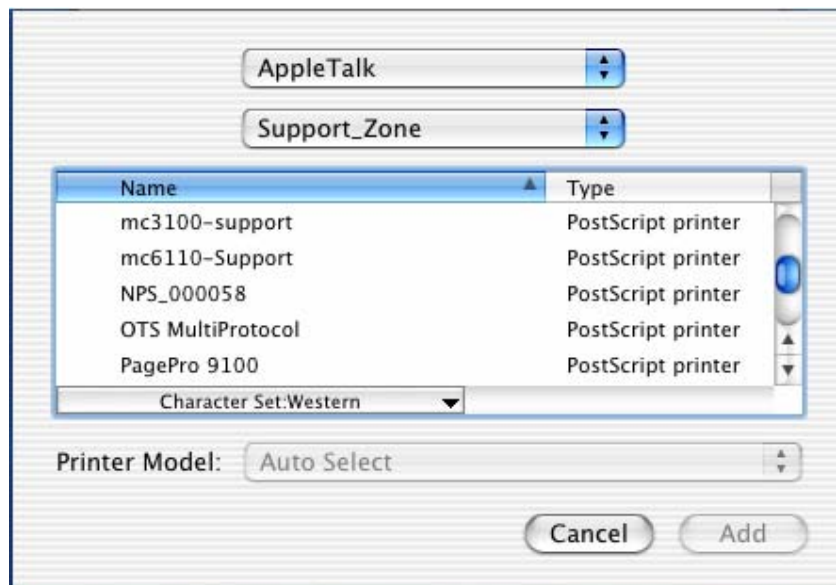
Select 'Add'

Your printer has been installed now.



Printing via AppleTalk:

Select 'AppleTalk', all printers communicating through AppleTalk on your network will be found:



Select the printer you want to install and select 'Add':

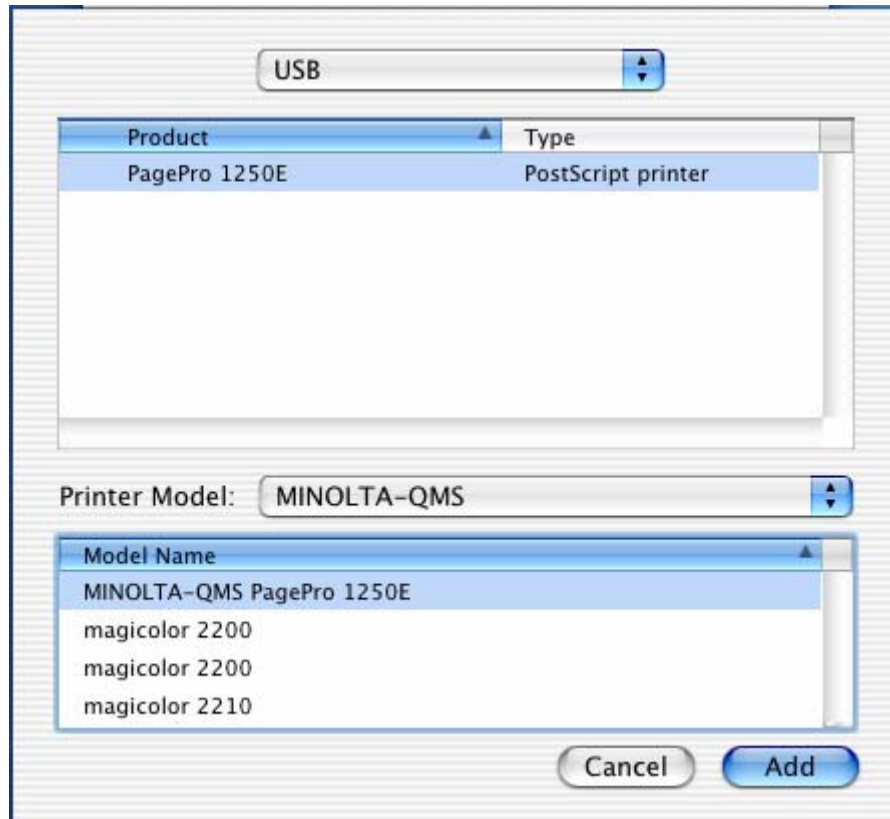
The option "Printer model" is grayed out because the system will search through the directories for the correct PPD. If a PPD cannot be found, you can define manually the correct location.

Your AppleTalk printer has been installed now.



Printing via USB

Select 'USB'. The printer connected through USB will be found:



Select the printer you want to install and select 'Add'
If necessary, the PPD can be selected under the option "Printer Model".
Your USB printer has been installed now.

NOTE:

The magicolor 7300 can not be connected through USB on a Macintosh.
The magicolor 7300 has to be connected via a network.
A network connection requires either a network cable + hub or cross-wired cable only.

As mentioned in the user manual the printer can only be connected via a:

- Crossover Ethernet Cable.
- Ethernet patch cable and an Ethernet hub.

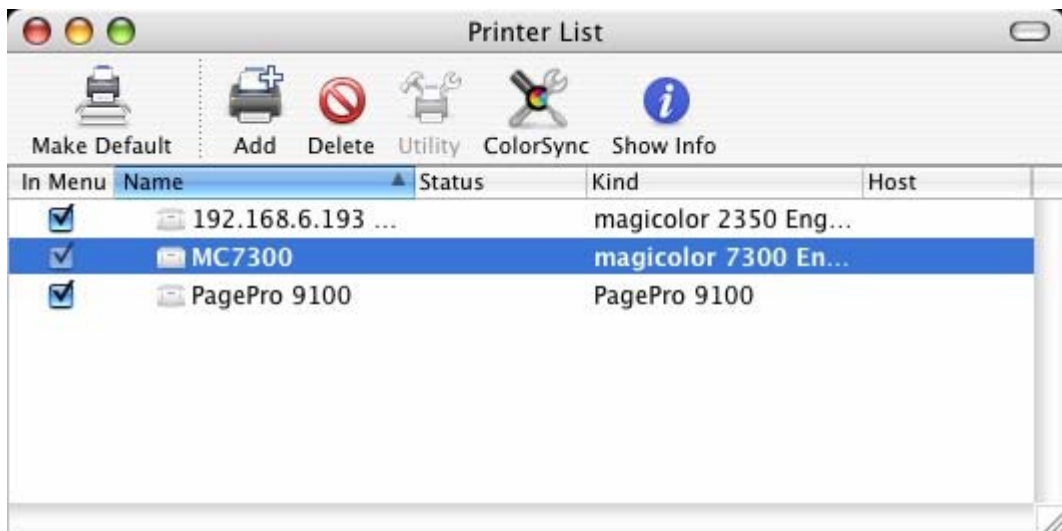


KONICA MINOLTA

Konica Minolta Printing Solutions Europe B.V.
Support Department
Website: www.konicaminolta.net/printer/

How to configure the printer options in the driver?

Open the Printer Setup Utility.

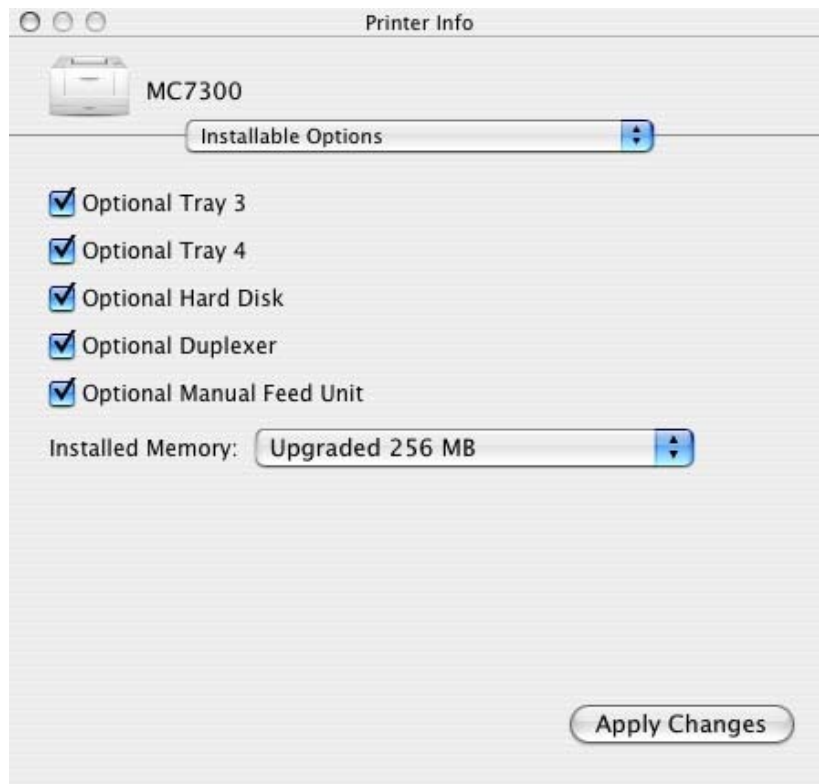


Select the printer in the Printer list and from the menu select: Printers → Show Info.



KONICA MINOLTA

Konica Minolta Printing Solutions Europe B.V.
Support Department
Website: www.konicaminolta.net/printer/



In the window above you can configure printer options such as duplexer, optional tray etc.