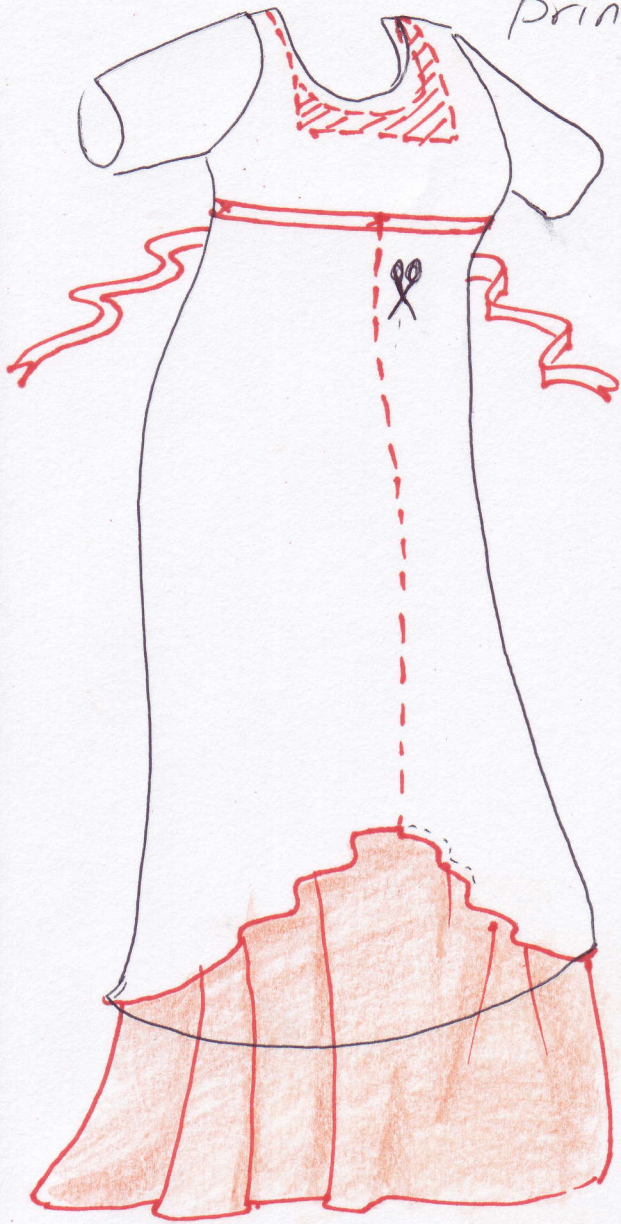


Intermediate: Using a pre-existing gown (summer dress) solid white, ivory, pastel or small traditional print. Back buttoned or pull-over.



step 1: Trim neckline & back to suit. Trim w/ lace or bias to hide stitching, etc.

step 2: Add a ribbon around the empire waist, tack stitch to prevent it from dropping too low.

step 3: Cut down center front of dress and create an arch @ front hem.

step 4: add coordinating underdress to achieve desired length.

Stephanie Johannesen - Oregon Regency Society

[www.oregonregencysociety.com](http://www.oregonregencysociety.com)

[oregencysociety@msn.com](mailto:oregencysociety@msn.com)