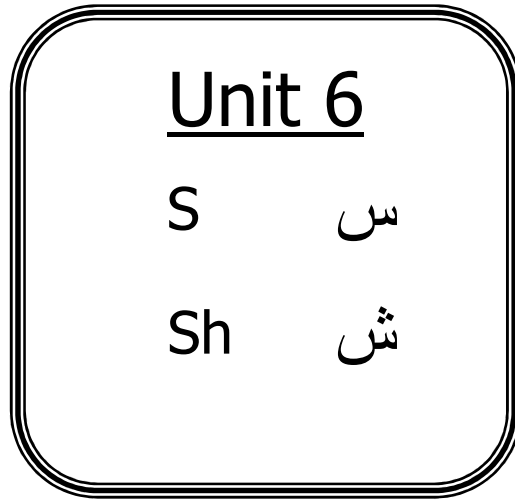
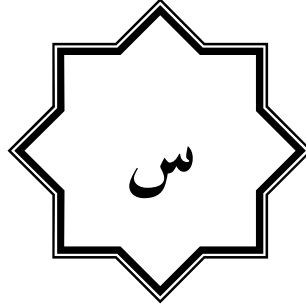


Unit 6 س ش



When they are final or isolated, their right side is written on the line and their left side is a semi-circle under the line.
When they are initial or medial, we cut the semi-circle.

Unit 6 س ش



Seen سِين

Al-qiraa'ah الْقِرَاءَةُ

Phonetics

Pronunciation: Like S in English .

Exit: The tip of the tongue and between the lower incisors.
Seen is a light letter.



sa = سَ

si = سِ

su = سُ

saa = سَا

see = سِي

soo = سُو

dassa دَسَّ = دَ + سَّ

dassi دَسِّ = دَ + سِّ

dassu دَسُّ = دَ + سُّ

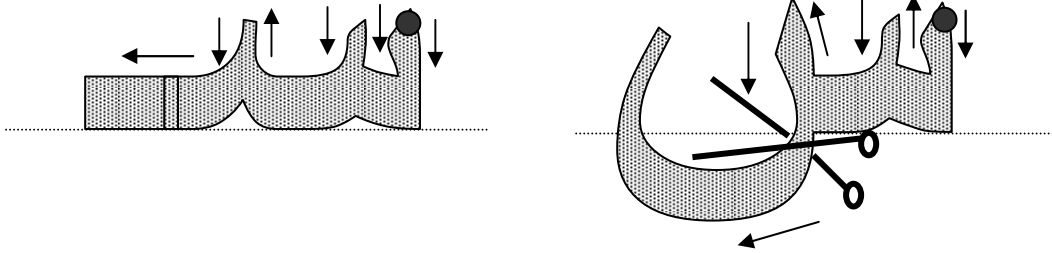
Unit 6 س ش





sanaa	سَنَا	=	ا	+	ن	+	س
sooru	سُورُ	=	رُ	+	و	+	سُ
tirsi	تِرْسِ	=	سِ	+	رُ	+	تِ
yusree	يُسْرِي	=	ي	+	رِ	+	سُ
yaseeru	يَسِيرُ	=	رُ	+	ي	+	سِ
wassada	وَسَدَّ	=	دَ	+	سَّ	+	وَ

				<i>Iqra' / Iqra'ee</i>		اِقْرَأْ / اِقْرَأِي	
سَدَّ	سَرَّ	سَنَّ	سَبَّ	١-			
سَارَ	رَاسَ	سَادَ	نَاسُ	٢-			
تَسَوَّدُ	يَسُودُ	سُودُ	سُورُ	٣-			
يَسِيرُ	يُسْرِي	يُسْرَا	يُسْرُ	٤-			
يَسَّرَ	تَسَّيَ	نَسِّيَ	نَسَّبَ	٥-			

Unit 6 س ش

Al-kitaabah الْكِتَابَة

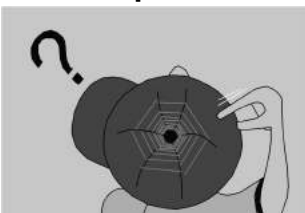


Isolated	Final	Medial	Initial
			
People	Lettuce	Honey	Sugar
naas نَاسٌ	khas خَسٌّ	3asal عَسَلٌ	sukkar سُكَّرٌ
- س	س	س	س

Notice that:

- 1- When س is initial or medial, it is written on the line and its left side disappears.
- 2- When it is final it is in the full form with a semi circle under the line.
- 3- س can be connected from both sides.

Help!



س is like a Snake

Unit 6 س ش



insakh / insakhee

اِنْسَخْ / اِنْسَخِي

١

س + س	سْ	سَّ	سِ	سُ	سِ	سَ
سس •••						
.....
.....
.....
.....

Ayna Seen?

أَيْنَ س؟

٢

نَدْرُ رَئِيسُ شَيْدَ مَسَدُ نَسْرُ

سَبِيلُ دَرَسُ نَبِيْتُ نَسِيرُ نَبْتُ

sil / sily

صِلْ / صِلِي

٣

..... س ن س ب س ب

..... س د س ي س ي

..... س س س ر س ر

..... ي س ب س ب س

Unit 6 س ش

..... د س ر س
 س ب ب ن س ب
 ي د س د رس

اِفْصِلِ / اِفْصِلِي الْاَحْرَفَ ifsil/ ifsilee al- ahurf

٤

	نسر	ن س ب	نسب
	يسد		سار
	تيس		سير

قُلْ وَاِنْسَخْ / قُولِي وَاِنْسَخِي qul wa insakb / qulee wa insakbee

٥

naas نَاسُ	khas خَسُّ	3asal عَسَلُ	sukkar سُكَّرُ
.....
.....
.....
.....
.....

Unit 6 س ش

قُلْ وَإِنسَخْ / قُولِي وَإِنسَخِي *qul wa insakh / qulee wa insakhee*

٦

٢٠ 3ishroon (3ishreen)	١٩ Tes3ata 3ashar	١٨ thamaaniata 3ashar	١٧ Sab3ata 3ashar	١٦ sittata 3ashar
.....
.....
.....
.....
.....

Unit 6 س ش



Sheen شين

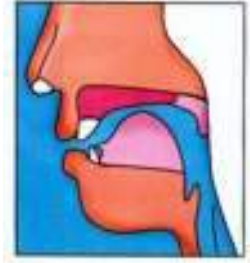
القراءةُ Al-qiraa'ah

Phonetics

Pronunciation: Like "sh" in English.

Exit: The middle of the tongue with what corresponds from the roof of the mouth.

Sheen is a light letter.



sha = شَ
shi = شِ
shu = شُ

shaa = شَا
shee = شِي
shoo = شُو

rash-sha	رَ + شَ = رَشَّ
rash-shi	رَ + شِ = رَشِّ
rash-shu	رَ + شُ = رَشُّ

Unit 6 س ش

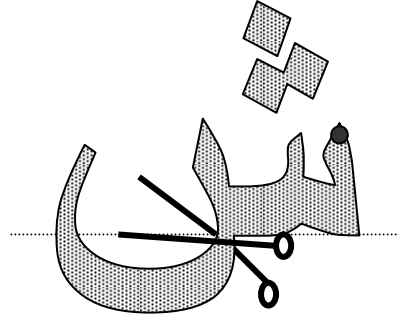
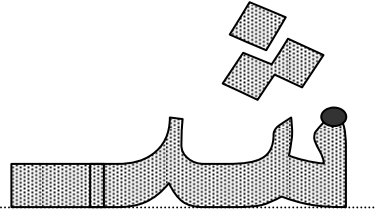
shadaa	شَدَا	=	ا	+	دَ	+	شَ				
shadhaa	شَدَا	=	ا	+	ذَ	+	شَ				
nashara	نَشَرَ	=	رَ	+	شَ	+	نَ				
yashee	يَشِي	=	يَ	+	شَ	+	يَ				
rash-shaashi	رَشَّاشِ	=	رَ	+	شَ	+	ا	+	شَ	+	شَ

اِقْرَأْ / اِقْرَأِي Iqra' / Iqra'ee

Compare between س and ش

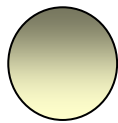
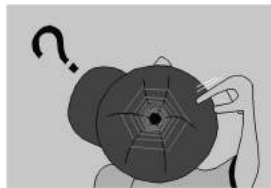
نَشَرَ	نَسَرُ	٧	شَ	سَ	١
شَدُّ	سَدُّ	٨	شُ	سُ	٢
بَشَرَ	بَسَرَ	٩	شِ	سِ	٣
دَاشَ	دَاسَ	١٠	شَا	سَا	٤
يَشُدُّ	يَسُدُّ	١١	شُو	سُو	٥
يَشِيرُ	يَسِيرُ	١٢	شِي	سِي	٦

Unit 6 س ش



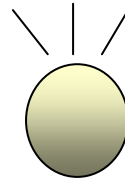
Isolated	Final	Medial	Initial
			
Throne	Apricot	Wood	Sun
3arsh عَرَشُ	mishmish مِشْمِشُ	khashab خَشَبُ	Shams شَمْسُ
- ش	ش	ش	ش

س follows the same rules of writing of ش



Sun Shine

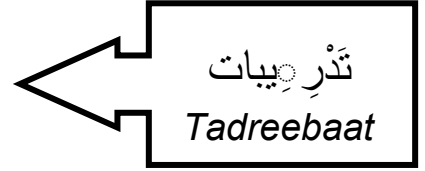
س ش



s + h = sh

س + هـ = ش

Unit 6 س ش



insakh / insakhee

إِنْسَخْ / إِنْسَخِي

١

س	ش	س ش	ش س	ب س	ر ش	ن ش	ش ي
س	ش	سش	شس	بس	رش	نش	شي
.....
.....
.....
.....

Ayna Sheen?

أَيْنَ ش؟

٢

ذَنْبٌ

شَمْسٍ

شَكَرَ

عَسِيرٌ

بَشْرٌ

نَشْرٌ

يَعِيشُ

وَتَبَّ

قِرَشٌ

سُكَّرٌ

صِلْ / صِلِي

sil / sily

٣

ش ا شا

س ا سا

..... ش و

..... س و

..... ش ي

..... س ي

..... ت ش

..... ي س

Unit 6 س ش

س ب ت س ب ت س ب ت س ب ت
 س ب ي س ب ي س ب ي س ب ي
 ب س ر ب س ر ب س ر ب س ر
 ن س ي ر ن س ي ر ن س ي ر ن س ي ر

3 إِفْصِلْ / إِفْصِلِي الْأَحْرُفَ ifsil/ ifsilee al- ahruf

	نشر	ش ب ت	ش ب ت
	نبش		شر
	ورش		يشر

5 قُلْ وَانْسخْ / قُولِي وَانْسخِي qul wa insakh / qulee wa insakhee

3arsh عَرَشُ	مِشْمِشُ	خَشَبُ	shams شَمْسُ
	mishmish	khashab	
.....
.....
.....
.....

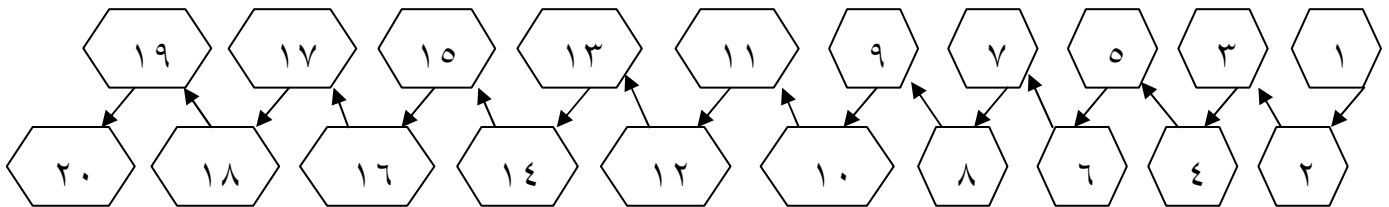
Unit 6 س ش

The letters we know are:

ب ت ث ن ي و ا د ذ ر ز س ش

hand span	شِبْرٌ	-٢	human	بَشَرٌ	-١
Prophet Sheeth *1	شَيْثٌ	-٤	lesson	دَرْسٌ	-٣
youth	شَبَابٌ	-٦	secret	سِرٌّ	-٥
chant	نَشِيدٌ	-٨	ease	يُسْرٌ	-٧
hapiness	سُرُورٌ	-١٠	fence	سُورٌ	-٩
mirage	سَرَابٌ	-١٢	reward	ثَوَابٌ	-١١
eagle	نِسْرٌ	-١٤	dam	سَدٌّ	-١٣

Count in Arabic:



*1-Sheeth (Seth) is prophet's Adam's son. When Adam's death drew near, he appointed his son Sheeth (Seth) to be his successor, and taught him how to call people to worship The Creator of heaven and earth alone and not to associate any partners with him in worship.

After Aadam's death, his son Sheeth (Seth) took over the responsibilities of prophet hood, to him fifty psalms were sent down. Sheeth (Seth) was followed by Prophet Idrees (Enoch).