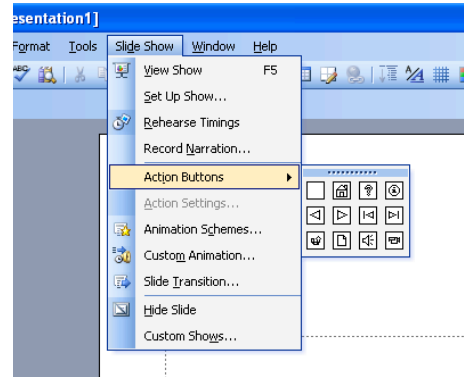
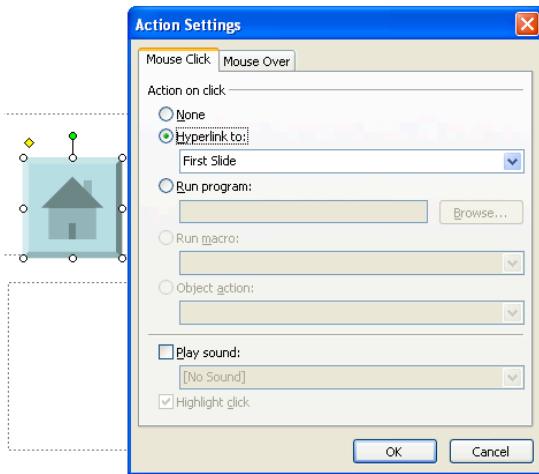


PowerPoint: How to Add Navigation Buttons

1. Click on Slide Show
 - a. Scroll down to Action Buttons
 - b. Choose the Action Button you want: Home, Help, Information, Previous, Next, Beginning, End, Return, Document, Sound or Movie
 - c. Click on it and place it in the PowerPoint where you want it

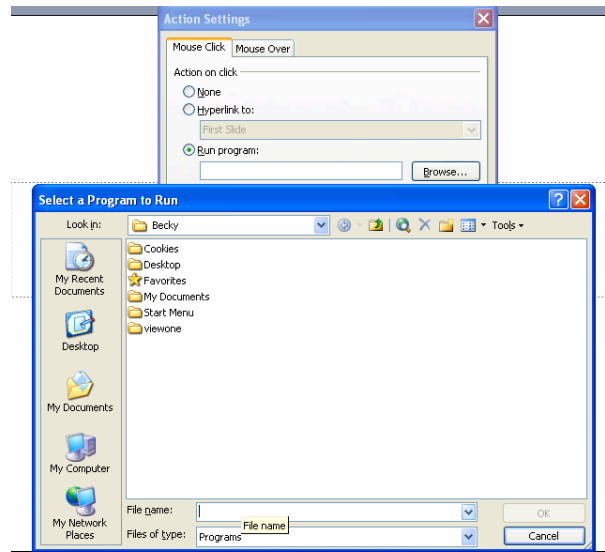


2. When you place it where you want it, a window will pop up asking you what you want this navigation button to do
3. Choose what actions you would like the button to perform.



- a. To hyperlink the button click on hyperlink then select if you would like it to be link to another slide, PowerPoint, file, URL or if you want it to end the show

- b. To run a program from the button click on run program
 - i. Click on Browse then find the program you would like to run from the Navigation Button



4. When you are done adding actions to the button press OK

