

Dinosaur Detectives



national
museum
wales
amgueddfa
cymru



Noddir gan
Lywodraeth Cymru
Sponsored by
Welsh Government

Dinosaur Fossils

A dinosaur is a type of reptile that evolved around 250 million years ago. They became extinct 66 million years ago.

We know that dinosaurs once roamed the earth because we can find fossils.

A fossil is the remains of an animal or plant that has been preserved in rock for millions of years.

Palaeontologists are scientists who discover and study fossils.



This symbol highlights features you can spot when you visit National Museum Cardiff

Teeth

Teeth can give us clues about what a dinosaur ate.



Tooth of a T. rex

Meat eaters had sharp teeth, some curving like daggers with serrated edges.

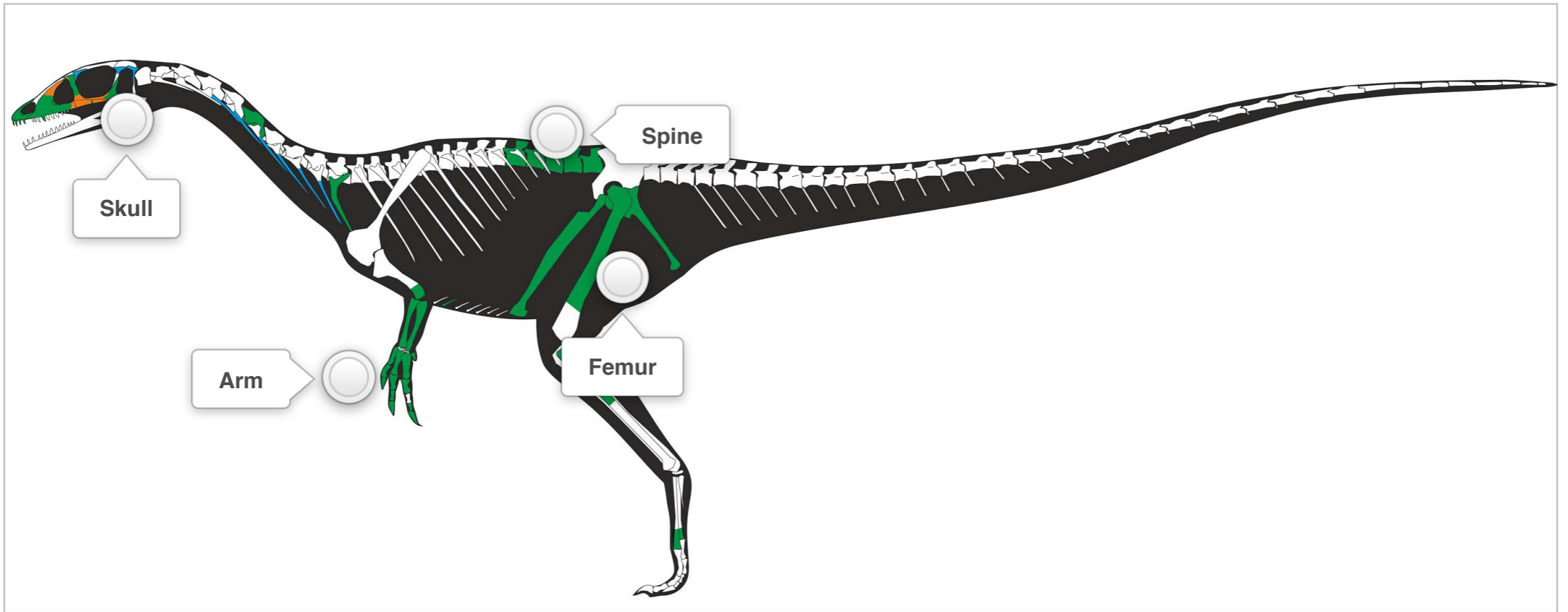
Plant eaters had small, flat teeth for grinding up plants.



Iguanodon tooth



Dinosaur Skeleton



Claws

Plant eating dinosaurs used their claws to defend themselves from predators.

Meat eaters had sharp claws for catching their prey.



Iguanodon thumb spike



Hadrosaur claw



Velociraptor claw



T. rex claw

We call plant eaters herbivores

We call meat eaters carnivores

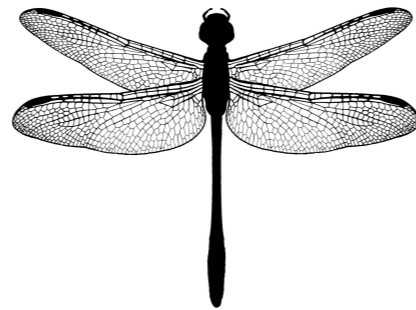


Dinosaurs' World

There were other plants and animals living at the time of the dinosaurs.
By looking at their fossils we can build up a picture of what the world was like when the dinosaurs were alive.



Ammonite



Dragonfly



Cone



A New Welsh Dinosaur

The museum's newest dinosaur was found in 2014 on a beach near Penarth.

This Welsh dinosaur is the oldest Jurassic dinosaur discovered in the UK. Its name is *Dracoraptor hanigani*. *Dracoraptor* means "dragon robber".



The cliffs on the beach are dangerous.
Do not go fossil hunting there!

These are the hand bones of *Dracoraptor*



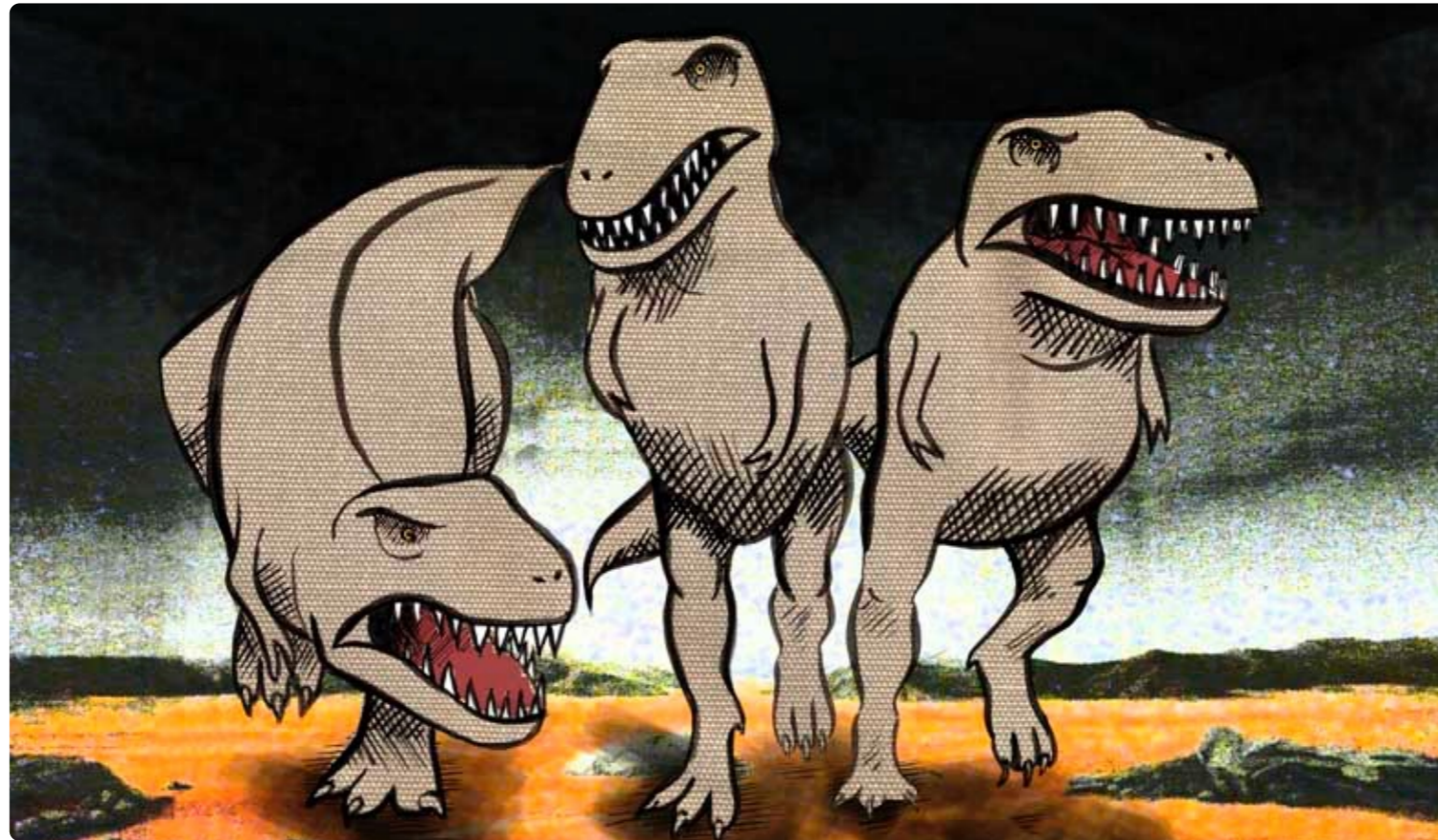
A New Welsh Dinosaur

A life-size model of *Dracoraptor* is on display at National Museum Cardiff.



Dinosaur Names

Scientists often named dinosaurs after the way they looked



Tyrannosaurus rex means “Tyrant lizard king”

Dinosaur Maths

Dinosaur footprints can help scientists to learn how dinosaurs moved.

The *Tyrannosaurus rex* footprint measures **100 centimetres**. Your foot measures around **20 centimetres**.

Use a calculator to find out how many of your feet would fit along the length of the *Tyrannosaurus rex* footprint.



Booking Information

We offer two dinosaur workshops at National Museum Cardiff.

Sounds of the Dinosaurs is for Foundation Phase classes

Dinosaur Detectives is for Key Stage 2 classes



For more information visit our website: <https://museum.wales/cardiff/learning/>

All schools and groups must book in advance, even if they are not booking a workshop.

Please call (029) 2057 3240 to book (Mon-Fri 9am - 4pm).

Albie the Adventurer - A Dinosaur in the Forest

Albie's the heaviest dinosaur in the forest, but he's scared of – everything!

This illustrated book is Amgueddfa Cymru's first storybook for children.

<https://museum.wales/shop/item/1524/Albie-the-Adventurer/>

