



BABY'S NURSERY INTERIOR DESIGN PRESENTATION

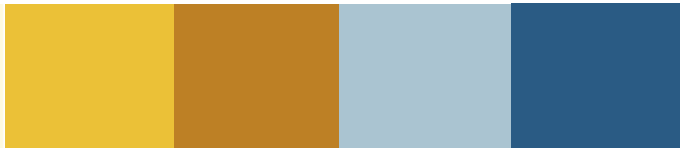
## MONOCHROMATIC COLOR SCHEME

1. Monochromatic color schemes are derived from a single base hue and extended using its shades, tones and tints.
2. It creates depth and serenity if you're using neutral or cool colors.



## COMPLIMENTARY COLOR SCHEME

1. Complimentary colors are the opposite hues on the color wheel
2. This color palette along with patterns and shapes provides a newborn with the best form of visual stimulation.



## TRIADIC COLOR SCHEME

1. A triadic color scheme is comprised of three colors evenly spaced on the color wheel forming a triangle.
2. It can create more cheerful and colorful place for the baby



## GENDER NEUTRAL COLOUR SCHEME

Gender neutral color scheme is clean, bright, and beautiful, boasting a winning combo of Bohomien charm and Scandinavian-inspired practicality.



## CEILING AND LIGHTING

1. Install a dimmer on any intense overhead lighting fixtures, especially if they are located directly over the crib.
2. It's also a good idea to purchase a small accent lamp for a cozy, story-time glow.
3. Nightlights provide both safety and comfort, especially during late-night feedings.



Found in the gallery, these stars are a classic way to update your ceiling, and they are gender neutral

The textural feel of the wood on the ceiling gives this nursery a cozy feel—perfect for a hipster vibe or cabin in the woods look.

Modern triangles take a fresh approach in this nursery design

## WALL TREATMENT



Paint the wall with magnetic paint, and glue magnets to the back of each letter for hours of interactive, alphabet play.



Use chalkboard paint to create an artistic accent wall, and hire an art student to draw something up using a chalk-paint pen. When your child outgrows the mural, simply clean the wall, and invite them to decorate their own space.



Nature inspired wallpaper can accent our walls

## FLOORING TREATMENT

Flooring treatment should include the following points--- softness, safety, durability and ease of cleaning.

HARDWOOD FLOORING WITH RUG AREA



1. At the heart of the room, place a rug to mark out a space for playing.
2. A play rug helps develop a baby's motor skills, while allowing the baby to grow in its room.

WOOL CARPET FLOORING



1. Wool has natural soil and stain resistance, and it's color fast.
2. In addition, wool can absorb up to 30% of its weight in moisture without feeling wet.
3. So, in warmer and humid conditions it absorbs some of the moisture making the room feel cooler, less humid and just more comfortable.

PLUSH FLECKED CARPET FLOORING



1. Soft carpets are nice for babies and toddlers.
2. It's a great option for babies to learn to crawl and for you and your baby to play on.
3. Nylons as these are more durable.
4. They also tend to be softer and look nicer.
5. Polyesters are more colorfast and generally cost a bit less.



# FURNITURE AND ACCESSORIES

Some cribs convert to toddler beds and even full size beds. A toddler rail is a great option for babies that start climbing out of cribs at an early age, but aren't quite ready for a twin bed.



## CHANGING TABLE + DRESSER



If you're limited on space, then the changing top is a fantastic option. They secure to the top of any dresser, so be sure you have a dresser that's at a comfortable height for you. The best part of a changing top is when you're out of the diaper phase, you can remove it and you're left with a dresser for your big kid.

## WARDROBE

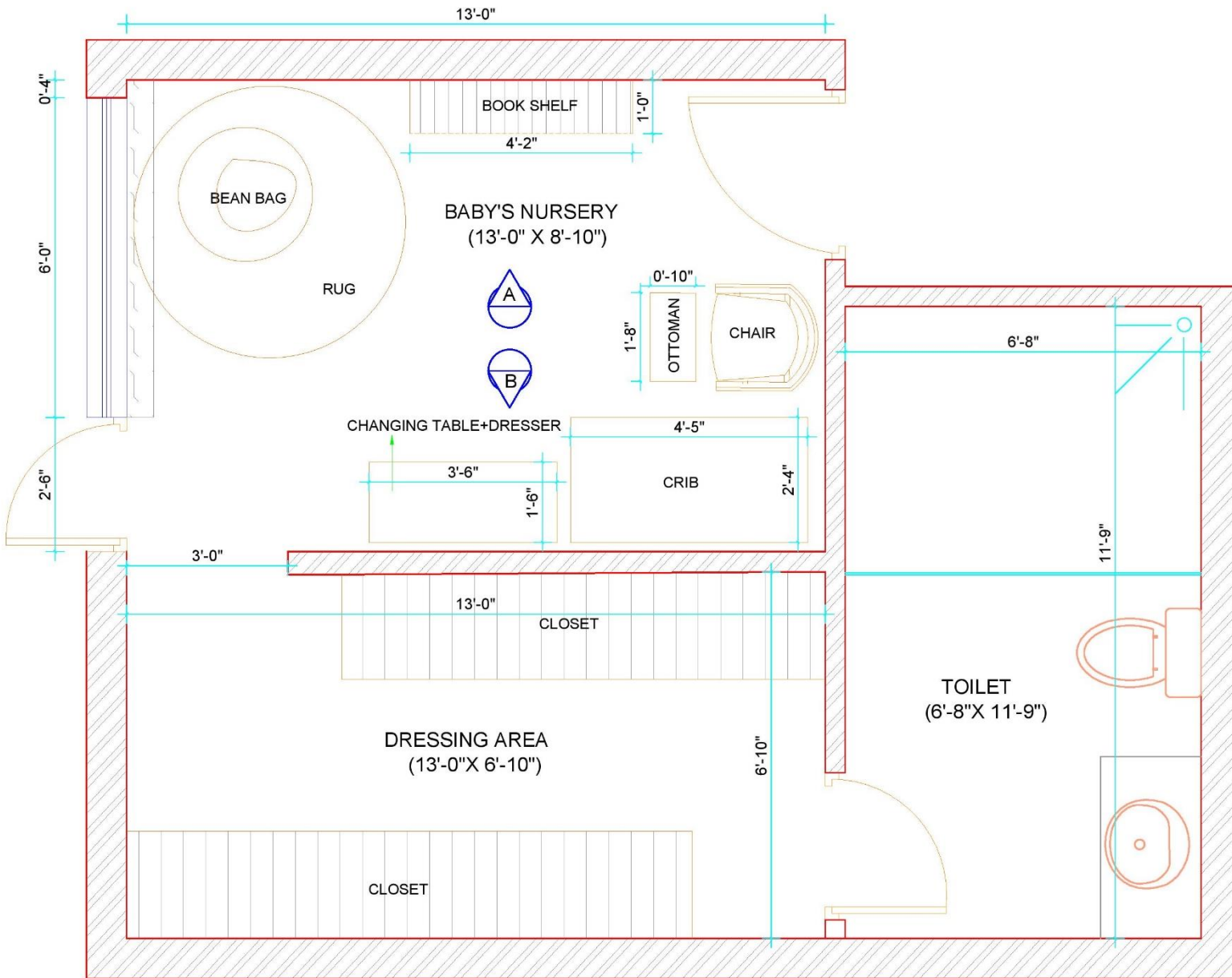


Hanging closet storage is perfect for babies. A few hanging organizers can store a ton of gear now and be repurposed for toys, art supplies and games later. Open bin storage is great for blankets and gear when your baby is small, and can easily transition into a toy box as he gets bigger.

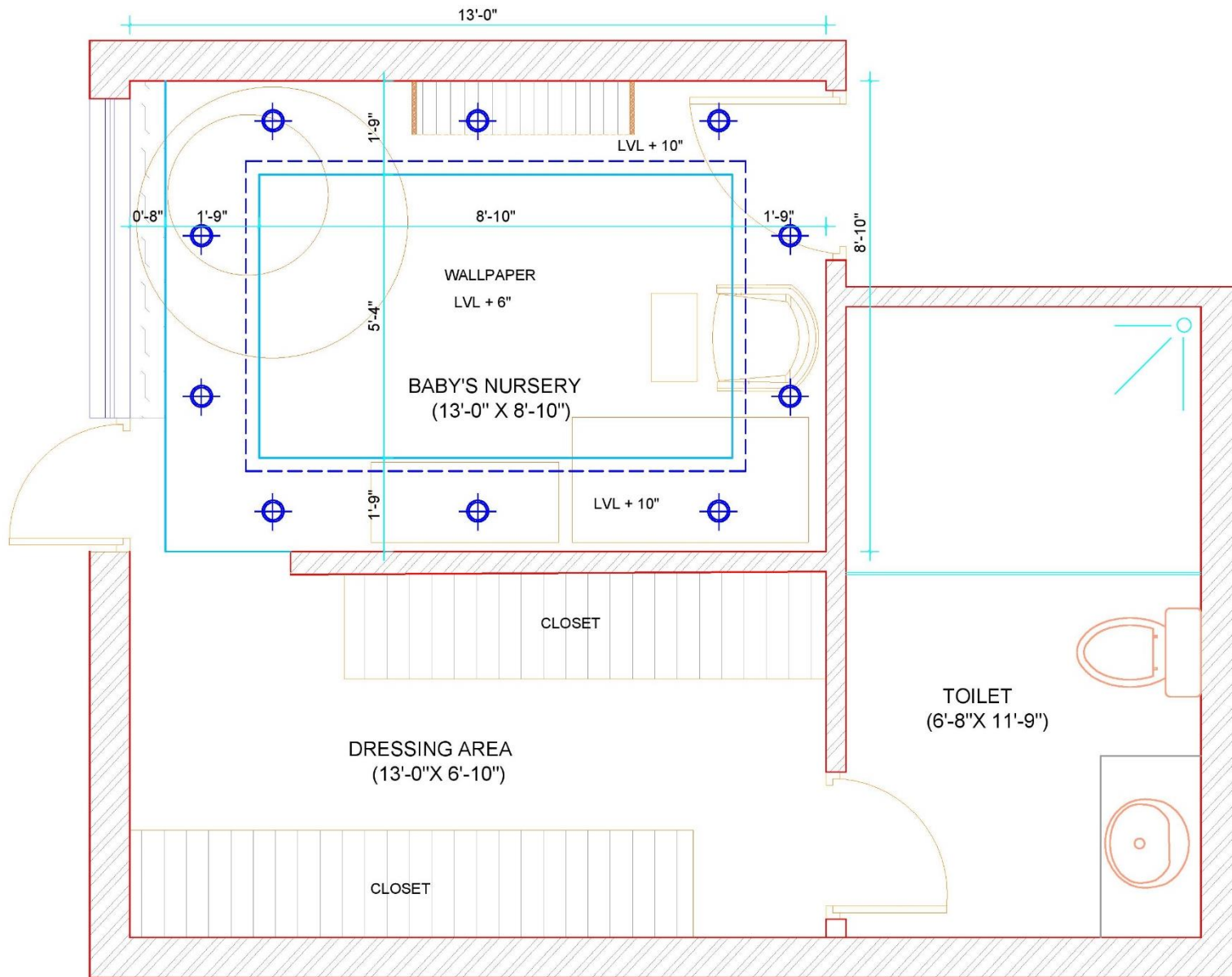
## ROCKING CHAIR



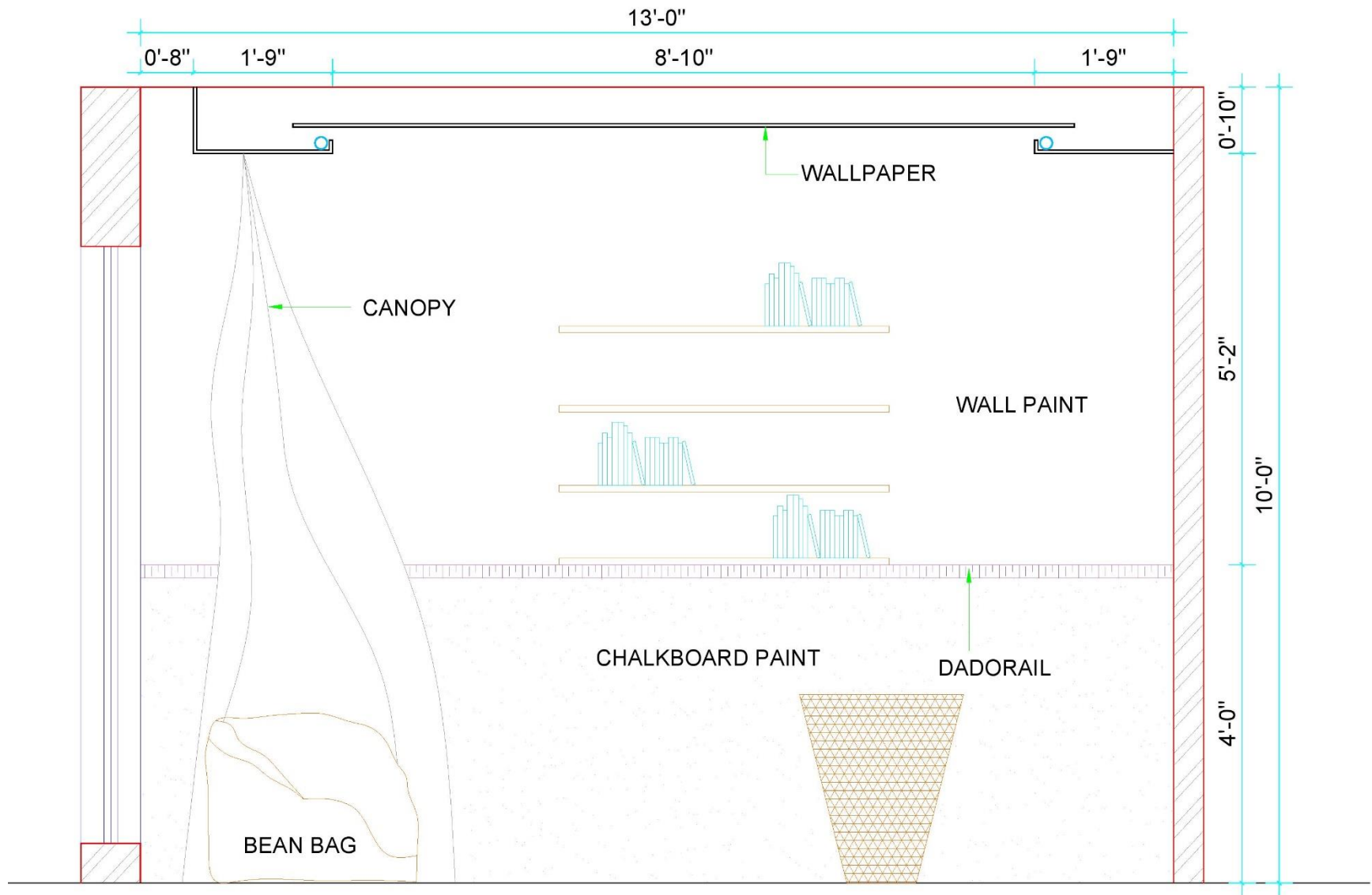
Consider a rocking chair or glider. The movement will help lull you both to sleep. Look for a fabric that cleans easily and holds up to a lot of use. Consider a small bookcase next to the chair for bedtime stories, or your favorite novels



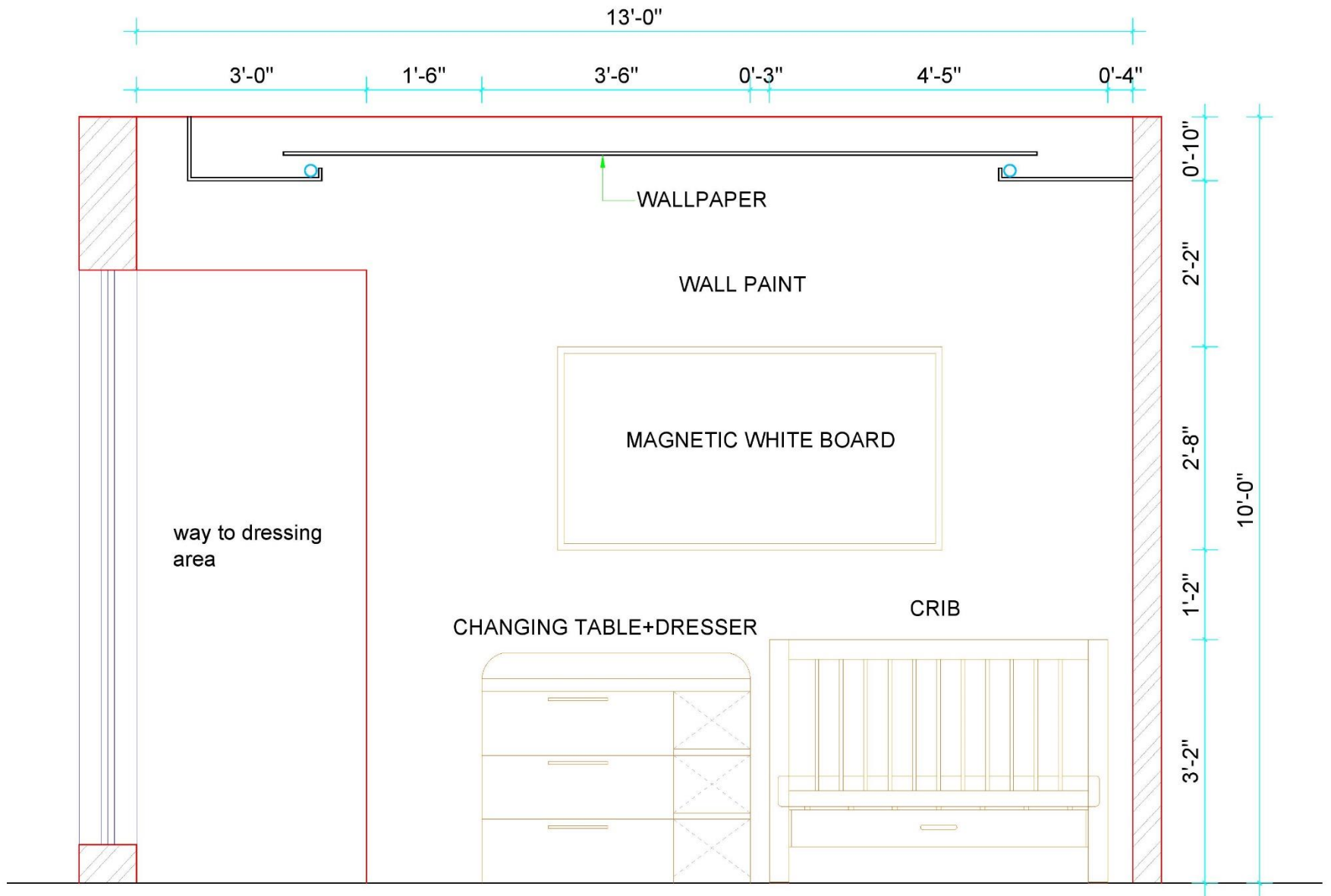
LAYOUT PLAN



FALSE CEILING PLAN



WALL ELEVATION A



WALL ELEVATION B