



Avenue Boiserie

Created for the living room, the Avenue Boiserie system also lends itself to the needs of the sleeping area. The system, consisting of a pre-drilled back-panel, to which aesthetic panels and accessories can be attached, can be fitted with a perimeter, dimmable LED light with integrated switch-on.

The wealth of elements reflects its versatility: reduced thickness metal shelves, wall and base units, fabric panels, a mirror or cork panels and clothes hooks can be attached to the boiserie.

DESIGN ruga.perissinotto & Sciuto Architetti

Nato per il living, il sistema Avenue Boiserie si presta anche alle necessità della zona notte. Il sistema, composto da un retro-pannello preforato a cui si applicano pannelli estetici e accessori, può essere dotato di luce a LED perimetrale, dimmerabile e con accensione integrata. La ricchezza degli elementi ne rispecchia la versatilità: alla boiserie si applicano infatti mensole metalliche di spessore ridotto, pensili e basi, pannelli in tessuto, specchio o sughero e appendiabiti.

ruqa.perissinotto & Sciuto Architetti



The ruga.perissinotto studio was established after a meeting between Alessandro Ruga and Carlotta Perissinotto in London in 2010. Inspired by a versatile approach to design issues, they collaborate with various companies in the furniture district.

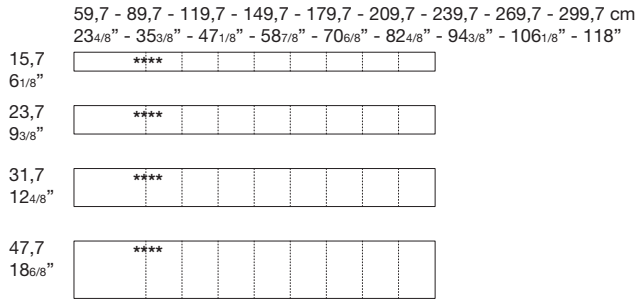
The Sciuto Architetti studio, founded by Pierangelo Sciuto in 1988, is renowned for a special focus on research and changing trends.

Lo studio ruga.perissinotto nasce dall'incontro tra Alessandro Ruga e Carlotta Perissinotto, avvenuto a Londra nel 2010. Animato da un approccio trasversale alle tematiche progettuali, collabora con diverse aziende del distretto del mobile.

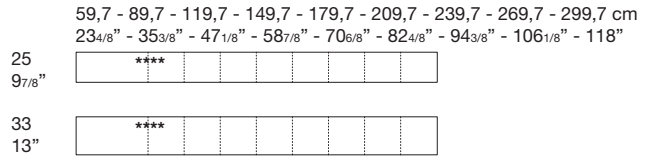
Lo studio Sciuto Architetti, fondato da Pierangelo Sciuto nel 1988, si caratterizza per la particolare attenzione alla ricerca e all'evoluzione dei trend.

Modular structures and components

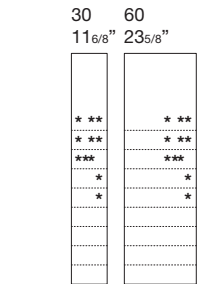
Horizontal boiserie panel (* = Upholstered)



Horizontal boiserie panel near bases (* = Upholstered)

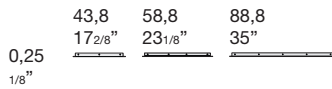


Vertical boiserie panel (* = Upholstered ** = Cork, Mirror)



H 64 - 80 - 96 - 112 - 128 - 144 - 160 - 176 - 192 cm
 H 25²/₈" - 31⁴/₈" - 37⁶/₈" - 44¹/₈" - 50³/₈" - 56⁵/₈" - 63" - 69²/₈" - 75⁵/₈"

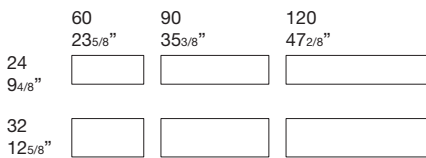
Metal shelves for Boiserie P 24 cm D 9⁴/₈"



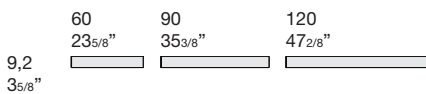
Hook and knob for Boiserie



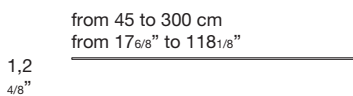
Base units suspended for Boiserie P 50 cm D 19⁵/₈"



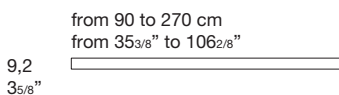
Metal trays P 50 cm D 19⁵/₈"



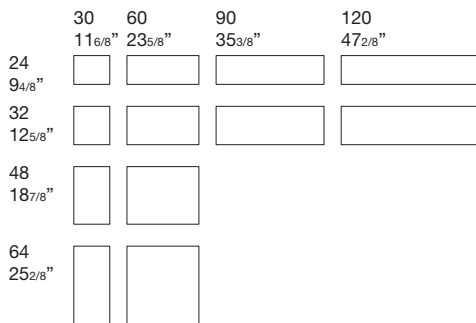
Top for base units P 50 cm D 19⁵/₈"



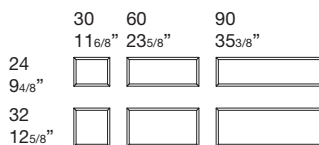
Top for base units/Folder edge shelf P 50 cm D 19⁵/₈"



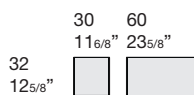
Wall units for Boiserie P 35 cm D 13⁶/₈"



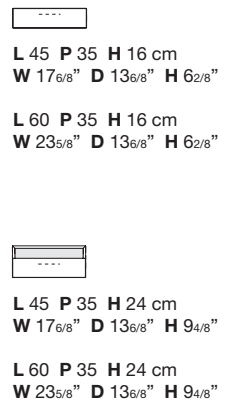
Wall units for Boiserie, 1 open side P 35 cm D 13⁶/₈"



Metal wall units for Boiserie, 1 open side P 35 cm D 13⁶/₈"



Avenue Night stand for Boiserie



FINISHES

Wood



Rovere naturale



Noce

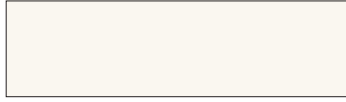


Rovere Nero



Eucalipto

Matt lacquer



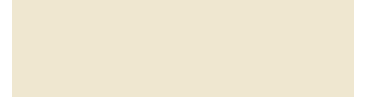
Neve



Pomice



Latte



Canapa



Avena



Beige



Corda



Lino



Tufo



Visone



Spago



Fango



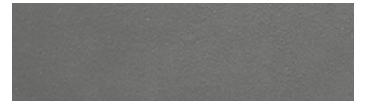
Grafite



Colombo



Basalto



Piombo



Grigio



Asfalto



Nero



Pioggia



Argilla



Ferro



Ambra



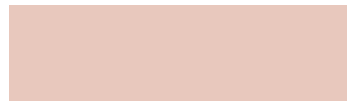
Miele



Rosso Rubino



Cameo



Conchiglia



Oliva



Alpi



Notte

FINISHES

Lacquered metal



Exclusive Champagne



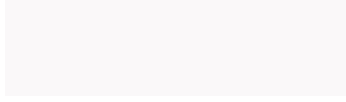
Exclusive Brown



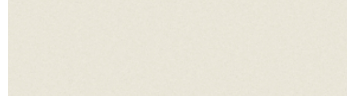
Exclusive Onyx Black



Exclusive Space Gray



Bianco



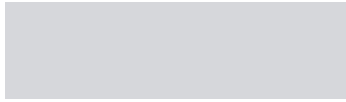
Grigio sabbia



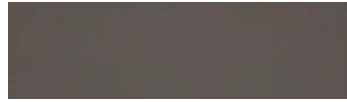
Conchiglia



Terracotta



Grigio alluminio



Grigio Londra



Grigio antracite



Nero



Verde oliva

Mirror (technical panel)



Specchio

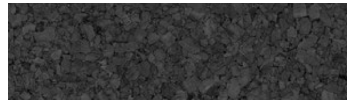


Specchio Grigio

Corck (technical panel)



Sughero Naturale



Sughero Nero

FINISHES

Alveo fabric



111



130



200



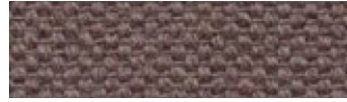
430



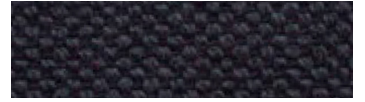
600



602



603



632



705



802



901

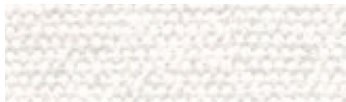


902

Composition: 100% recycled cotton
Abrasion: app. 25.000 Martindale
Cleaning and care:



Biacco fabric



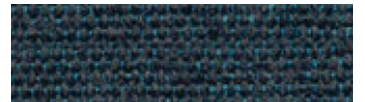
53



14



06



13



11



15

Composition: 75% recycled CO, 25% PL
Abrasion: app. 40.000 Martindale
Cleaning and care:



Borgo fabric



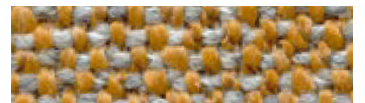
15



17



37



92



98



93



25



76



137

Composition: PC 51% , LI 11%, PL 11%,
VI 11%, CO 16%
Abrasion: app. 25.000 Martindale
Cleaning and care:



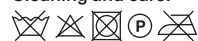
FINISHES

Canvas 2 (Kvadrat) fabric



Design: Giulio Ridolfo
Composition: 90% new wool,
worsted, 10% nylon

Abrasion: app. 100.000 Martindale
Cleaning and care:



FINISHES

Divina Melange 3 (Kvadrat) fabric



Design: Finn Sködt
 Composition: 100% new wool
 Abrasion: app. 45.000 Martindale
 Cleaning and care:



FINISHES

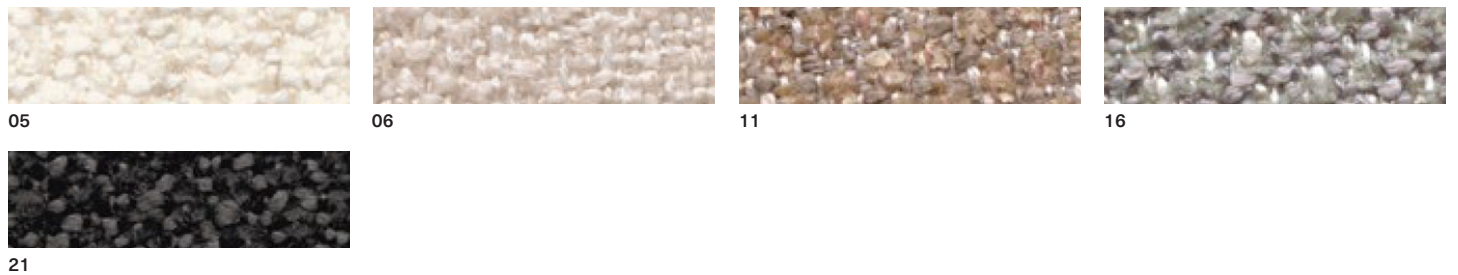
Field 2 (Kvadrat) fabric



Design: Alfredo Häberli
 Composition: 100% Trevira CS
 Abrasion: app. 100.000 Martindale

Cleaning and care:

Greto fabric




Composition: PL 33% , PC 25%,
 VI 23%, CO 10%, LI 9%
 Abrasion: app. 50.000 Martindale

Cleaning and care:

FINISHES

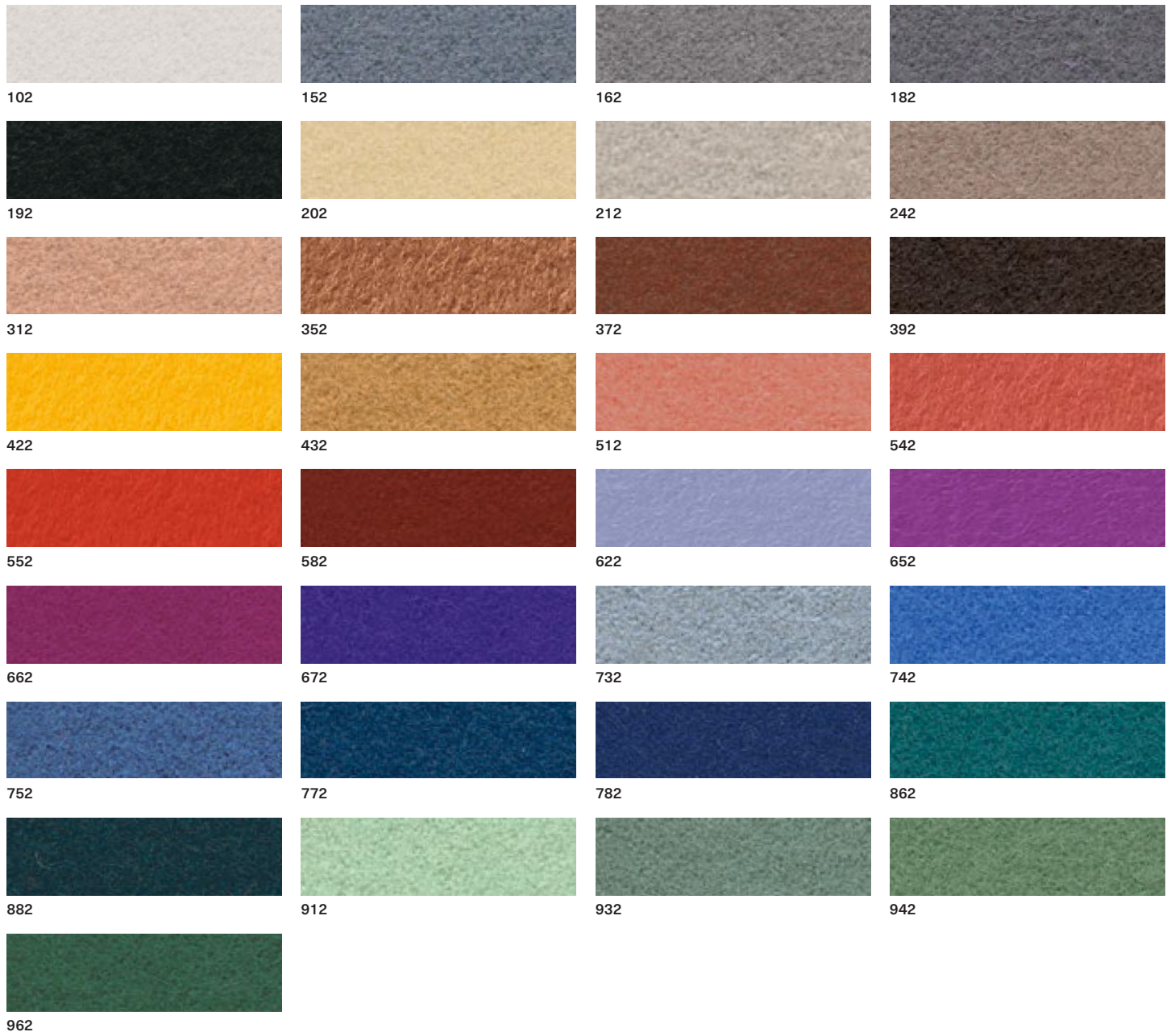
Hallingdal 65 (Kvadrat) fabric



Design: Nanna Ditzel
 Composition: 70% new wool,
 30% viscose
 Abrasion: app. 100.000 Martindale
 Cleaning and care:


FINISHES

Hero 2 (Kvadrat) fabric



Composition: 96% new wool, 4% nylon
 Abrasion: app. 45.000 Martindale
 Cleaning and care:



Merit (Maharam) fabric



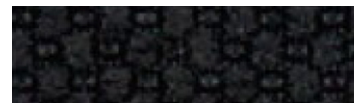
001



002



003



004



005



006



007



008



009



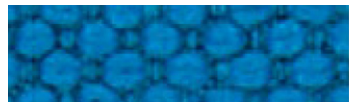
010



011



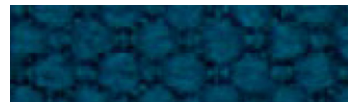
012



013



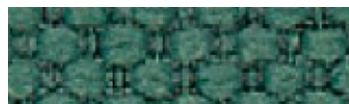
014



015



016



017



018



019



020



021



022



023



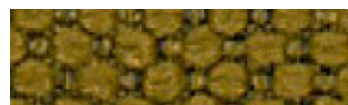
024



025



026



027



028



029



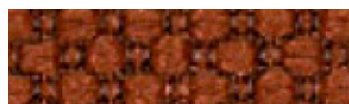
030



031



032



033



034



035



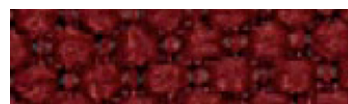
036



037



038



039



040



041



042



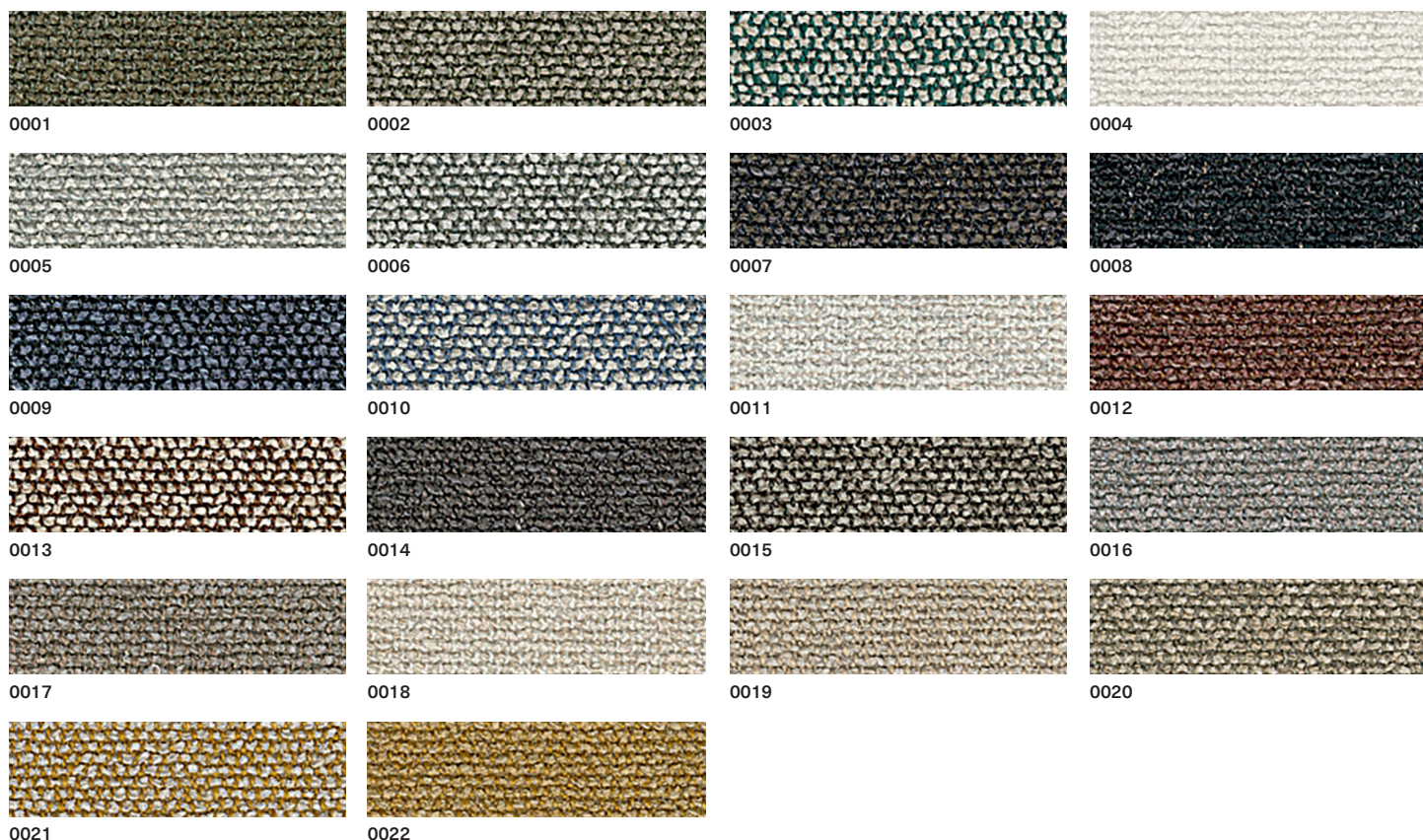
043

Composition: 76% post-consumer recycled polyester, 24% polyester
 Abrasion: app. 85.000 Martindale
 Cleaning and care:



FINISHES

Moss (Sahco) fabric



Design: Vincent Van Duysen
 Composition: 52% Cotton,
 22% Viscose, 14% Acrylic,
 6% Linen, 3% Polyester, 3% Nylon
 Weight: 920 g/lin.m
 Durability: 50.000 Martindale

Pilling: 4-5
 Lightfastness: 6-7
 Cleaning and care:

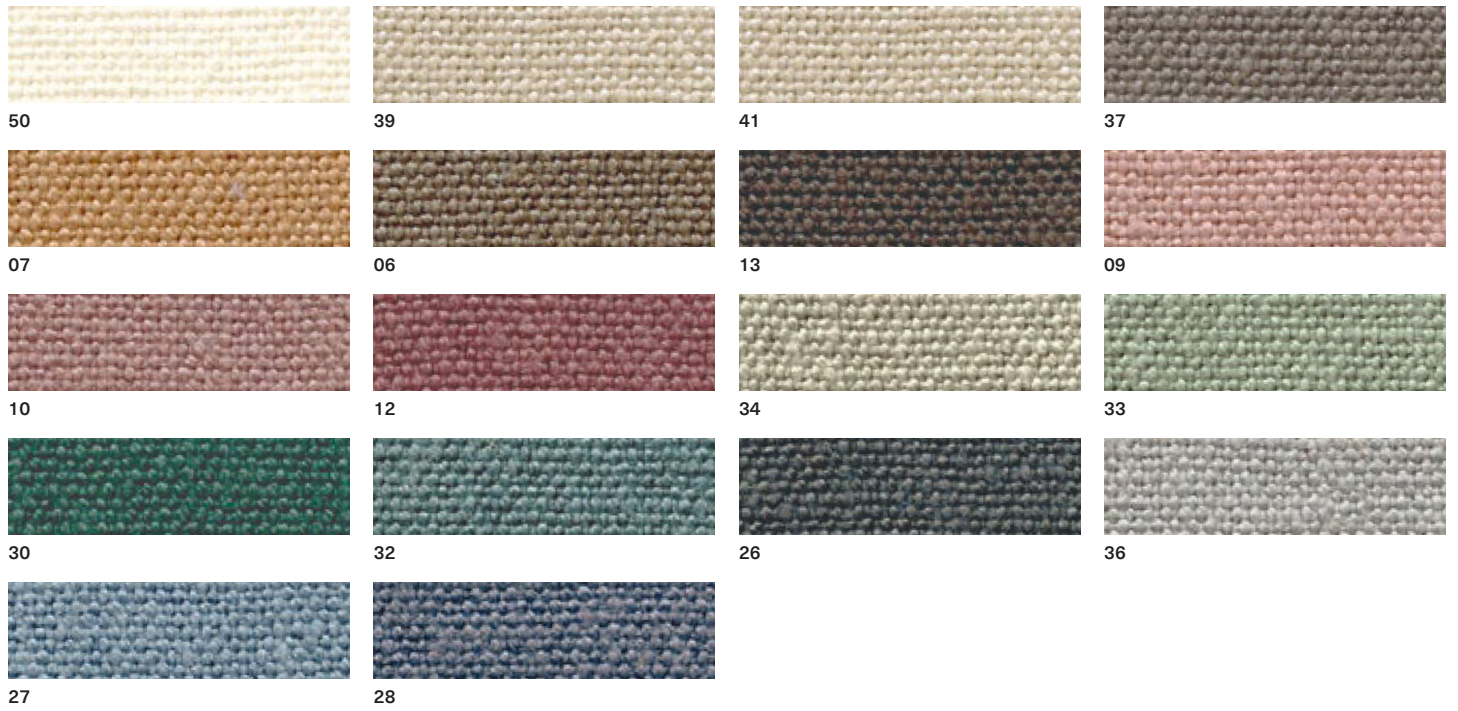
Orsetto (ONE Mario Sirtori) fabric



Composition: 34% Viscose, 33%
 Acrylic, 17% Wool, 8% Polyester, 4%
 Flax, 4% Cotton
 Abrasion: app. 80.000 Martindale
 Cleaning and care:

FINISHES

Parigi fabric



Composition: 100% linen
Abrasion: app. 30.000 Martindale

Cleaning and care:

Patio (Kvadrat) fabric



Design: Karina Nielsen Rios
Composition: 100% Trevira CS,
water repellent finish

Abrasion: app. 50.000 Martindale
Cleaning and care:

FINISHES

Remix 3 (Kvadrat) fabric



Composition: 90% new wool,
worsted, 10% nylon
Abrasion: app. 100.000 Martindale

Cleaning and care:



FINISHES

RePo 3D fabric



BIT 105



BIT 106



BIT 109



BIT 107



BIT 108



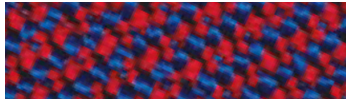
BIT 804



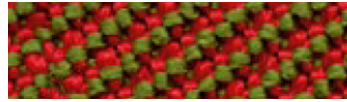
BIT 305



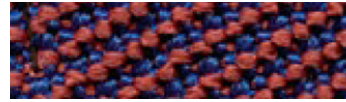
BIT 807



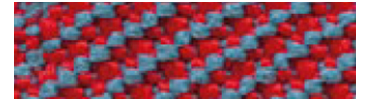
BIT 307



BIT 308



BIT 703



BIT 306



BIT 305



BIT 705



BIT 605



BIT 600

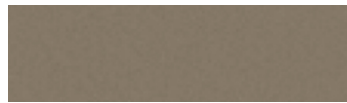
Composition: 98% recycled polyester,
2% LYCRA® elastomer
Abrasion: > 350.000 cicli, ISO 12947-2
Cleaning and care:



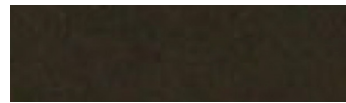
Scuba (Maharam) fabric



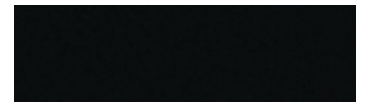
001



005



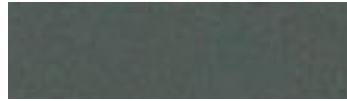
006



007



008



009



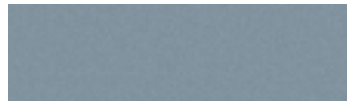
010



012



013



015



016



017



020



021



023

Composition: 100% polyurethane
(surface), 100% polyester (backing)
Abrasion: app. 100.000 Martindale
Cleaning and care:



FINISHES

Steelcut Trio 3 (Kvadrat) fabric



Design: Frans Dijkmeijer
and Giulio Ridolfo
Composition: 90% new wool,
worsted, 10% nylon
Abrasion: app. 100.000 Martindale
Cleaning and care:



FINISHES

Stipa fabric



03



05



02



04



31



46



150



16



06

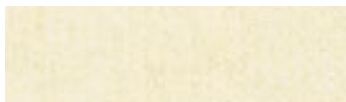


07

Composition: VI 34% , CO 31% , LI 15% ,
PC 13% , PL 7%
Abrasion: app. 25.000 Martindale
Cleaning and care:



Vello fabric



01



03



05



07



29



28



2002



26



14



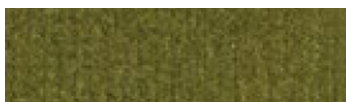
70



2007



58



1041

Composition: 100% Cotton
Abrasion: app. 70.000 Martindale
Cleaning and care:



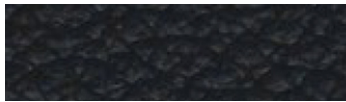
FINISHES

Elmosoft IX (Elmo) semi-aniline leather



FINISHES

Neocoast (Elmo) pigmented & printed leather



99076



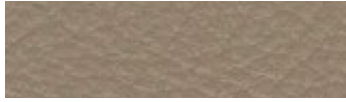
91097



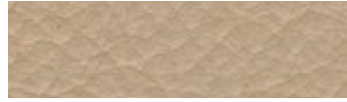
91100



71010



18008



12097



02061



00114



93090



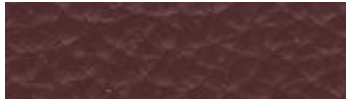
98016



43041



43084



95042



55058



45024



44015



77022



77035



98043



88017

FINISHES

Valencia (Spradling) synthetic leather



Composition: Topcoat 100% vinyl,
backing 100% polyester Hi-Loft
Abrasion: app. 300.000 Martindale
Cleaning and care:



Shades of colour cannot be
reproduced exactly on printed paper.
MD House Srl is entitled to make
modifications at any time and without
prior notice.

Nella stampa su carta la tonalità dei
colori non può essere riprodotta
fedelmente. MD House Srl si riserva
la facoltà di apportare modifiche in
qualsiasi momento e senza preavviso.