



### TECHNICAL DATA

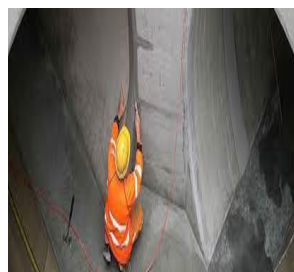
## PHILPLUG 308 – LIQUID PLUG

### PHILPLUG 308

Liquid Plug

**PHILPLUG 308** is rapid setting hydraulic cement use for Floor Topping Waterproof and Tanking. It can be used also for instant leak plugging like cracks in concrete or masonry walls, swimming pools, sea walls, tunnels, basement, dams and others. Results would be a thoroughly hardened concrete which gives longer life span. Expands as it sets to ensure a permanent water light seal chloride free, will not promote corrosion of reinforcement.

**PHILPLUG 308** is supplied as a Turbid coloured liquid ready for direct application and on site use.



### TECHNICAL SUPPORT

PATS PINOY Representative provides a technical advisory service for on-site assistance, application.

### DIRECTION

To assure the strongest bond, surface area must be free of all potential contaminants such as oil, grease, form release agents, dust or other foreign matter. For underwater applications, surface should be free of surface film or algae. Roughen surface area with a wire brush, chisel or other similar equipment. Remove any loose or weakened concrete and mortar, crack is less than 3/4 in. (1.9 cm) in width or depth, widen or gouge to this dimension. The best results will be attained if the inner portion of the crack is undercut so that the depth of the crack is wider than the surface opening. This creates an inner cavity that allows **PHILPLUG 308** to expand and resist high water pressure. If the hole or crack is not leaking at the time of the repair, soak area for at least 15 minutes before applying **PHILPLUG 308**.

Apply immediately after mixing. As soon as **PHILPLUG 308** has achieved a dry, putty texture and a compatible shape, force the material into the crack or cavity compressing it firmly using a gloved palm, trowel, wood block or other flat object. Hold it in place for over a minute. If there is a strong water flow holds for six minutes. Do not brush or trowel over surface. Shave off excess material with a knife or other similar sharp tool. For long, leaking vertical cracks, patch with successive small amount starting at the top of the crack. For anchoring bolts, posts, dowels, etc., drill a hole deep enough to allow 1/2 in (13 mm) around fixture, mix to a putty consistency and fill hole. Then tap object firmly into place. Keep damp for 15 minutes. Do not apply excessive pressure for several hours.

### PROCESSING DATA

**Mix Ratio** : 1 Part of PHILPLUG 308 : 2 Part of Portland Cement

### PROPERTIES

<b>Appearance</b>	Turbid Liquid
<b>Specific gravity</b>	1.26 + 0.02
<b>Ph Level</b>	8 - 9
<b>Setting Time</b>	20 – 50 Sec (Mixture of Portland Cement + Philplug 308)
<b>Hardening Time</b>	60 Sec (Mixture of Portland Cement + Philplug 308)



### ESTIMATING and PACKAGING

**PHILPLUG 308** is available in 20 liters - container, 4 liters - container and 1 liter - container



### STORAGE

**PHILPLUG 308** has minimum shelf life of 12 months provided the temperature is kept within the range of 2°C to 50°C. If the temperature of the product fall outside this range. Contact PATS PINOY Representative for advice.

### HEALTH and SAFETY

**PHILPLUG 308** does not fall into the hazard classifications of current regulations (see notes 1 and 2 below). However, it should not be swallowed or allowed to come into contact with skin and eyes. Suitable protective gloves and goggles should be worn. Splashes on the skin should be removed with water. In case of contact with eyes, rinse immediately with plenty of water and seek medical advice. If swallowed seek medical attention immediately - **do not** induce vomiting. For further information consult the Material Safety Data Sheet available for this product.

### FIRE

**PHILPLUG 308** is water based and non-flammable.

### CLEANING and DISPOSAL

Spillages of **PHILPLUG 308** should be absorbed onto sand, earth or vermiculite and transferred to suitable containers. Remnants should be hosed down with large quantities of water. The disposal of excess or waste material should be carried out in accordance with local legislation under the guidance.

### IMPORTANT NOTE

PATS PINOY products are guaranteed against defective materials and manufacturing, and are sold subject to its standard terms and conditions of sale. Copies of which may be obtained on request. Whilst PATS PINOY endeavors to ensure that the technical information on this data sheet is correct at the time of printing, it is the customer's responsibility to satisfy himself by checking with the company if this information is still current at the time of use; that the product is suitable for the intended application; and that the actual conditions of use are in accordance with those recommended because PATS PINOY has no control over the conditions of use of its products. All recommendations or suggestions regarding the use of these products are made without guarantee.