

E-HAIR COLLEGE

1. **Read Chapter in Salon Fundamental textbook.**
2. **Complete study guide.**
3. **Read these additional notes.**
4. **For review go to Practice online and review quizzes, puzzles.**
5. **Study and complete Test**

LESSON # 13 Haircutting

- Perform a client consultation.
- Identify the areas of the head.
- Explain haircutting theory.
- Identify the haircutting tools.
- Understand the fundamentals and cutting techniques.
- Develop infection control and follow safe working habits.
- List seven basic haircutting forms and cutting techniques.
- Describe men's grooming.

Client Consultation

The consultation is the most important part of the haircut. The decision of how the client wants their haircut is in the explanation given by the client to the stylist.

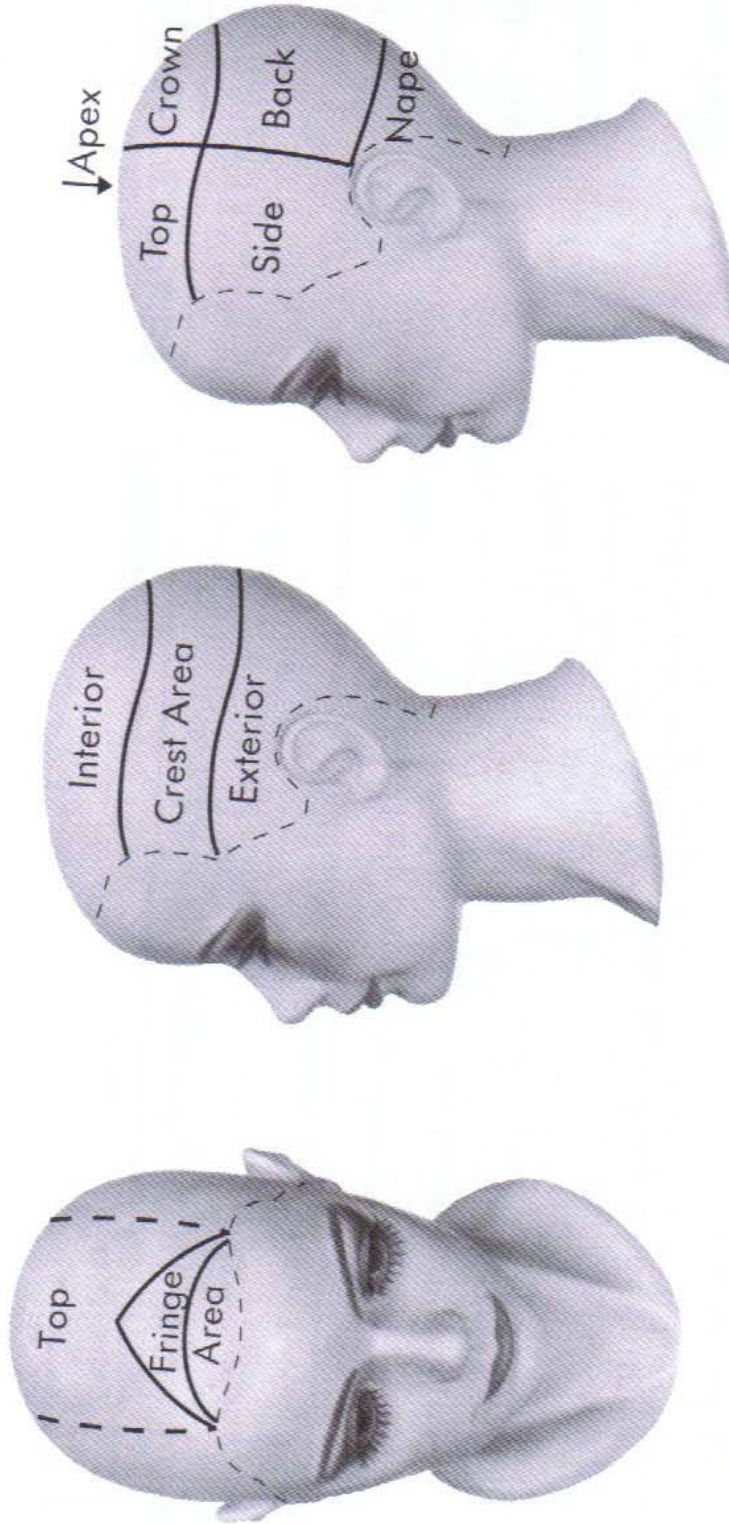
Questions you should be asking:

- What type of style would you like?
- How much time do you have for maintaining this look?
- What type of lifestyle do you have?
- Do you like to follow the new trends or more basic hairstyles?
- Are you interested in any other services to complement your haircut?
- What type of products do you use in your hair?

Once the style has been decided perform a hair analysis.

- Determine if the client has the suitable **face, profile and head shape** to look good in the desired haircut.
 - Pull hair away from face, note the length and width.
 - Note features of the face, which are the best features to emphasize in the haircut?
 - Note the chin is it receding jaw line should it be minimized or emphasized?
- Examine **density**, if the hair is too thin it may not lie correctly if it is too thick it may not suit the chosen haircut as well.
- The **texture** of the hair determines if the hair is fine, medium or coarse and suggests product usage for after the hair has been cut, to control the chosen haircut. Texture can be described as **unactivated** (smooth) or **activated** (rough). With unactivated texture, the ends of the hair are not visible when viewed in natural fall. With activated texture, the ends of the hair are visible.
- **Wave pattern** determines the wave or curling the hair. If the client has curly hair and is choosing a straight look, they will have huge maintenance issues. This should be explained to your client prior to cutting the hair.
- **Hairlines and growth** patterns are cowlicks, whorls and other growth patterns that affect where the hair ends up once it is dry.

Areas of the head



Haircutting theory

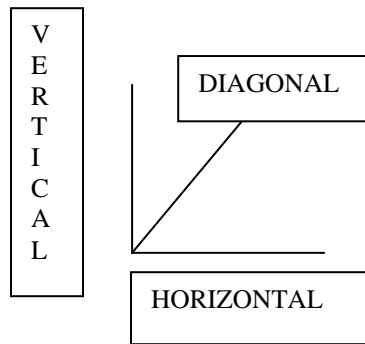
Haircutting is the artistic carving or removing of hair lengths with shears, taper shears, razors and clippers to create various forms and shapes.

Points, Lines and Angles:

All forms and shapes are made up of points, lines and sometimes angles.

A **point** is a dot or mark that when extended becomes a line.

A **line** can be straight or curved and can move in any direction. There are three lines used in haircutting.



CONCAVE

CONVEX

Concave line curve inward, like the inside of a sphere, while convex lines curve outward, like the outside of a sphere. Both lines are combinations of a diagonal right and a diagonal left line, they create a feeling of movement.

Angles are formed at the point where two lines join together or intersect. Angles are used to create the shape and the form of the haircut. In haircutting we use all forms of angle but the most popular are 0 degrees, 45 degrees and 90 degrees.

Elevation represents the angle in degree at which a subsection of hair is held, or elevated for the head when cutting. It creates graduation and layers and is usually described in degrees. The more you elevate the hair the more graduation you create.

Cutting line is the angle the fingers are held at when cutting and the actual line of hair being cut. It is also called finger angle, finger position, cutting position, cutting angle and shears angle.

Guidelines also called guide. This is the section of the hair that determines the length the hair will be cut. It is located at either the perimeter or the interior of the cut.

Stationary guide is the guide that does not move. All other sections are combed to this guide and cut at the same angle or length. A solid form or blunt cut is an example of use of a stationary guide.

Traveling guide also called the movable guide moves as the hair is cut. This guide determines the length of hair to be cut and follows the haircut.

Natural fall describes the hair as the lengths lay or fall naturally over the curve of the head.

Normal projection is another way to analyze the structure or length arrangement of a haircut.

Structure of a haircut consists of the arrangement of lengths across the various curves of the head, such as shorter on top to longer at the bottom or nape.

Haircutting tools

Shear creates clean, blunt edge or line.

Taper shear creates a distinct and regular alteration of shorter and longer lengths for mobility.

Razor creates a tapered effect on the edge of each strand, which produces a softer, somewhat diffused line.

Clipper creates clean precise lines or a soft, broom-like effect; various blade attachments (guards) allow the hair to be cut at various distances from the scalp.

Trimmer is used to outline the hairline, beard and sideburns.

Cutting comb parts and distributes the hair; primary comb for cutting and over-comb techniques.

Large tooth comb controls and distributes larger amounts of hair; also used for over comb techniques.

Taper barber comb helps to cut short lengths and refine the perimeter when used against the skin.

Towel protects the client

Plastic cape protects client's clothing

Neck strip protects client's skin from contact with the cape.

Spray bottle used for wetting the hair during a haircut.

Fundamentals and cutting techniques

Sectioning involves dividing the head into sections and then subsections for the purpose of control. The most common is the hair is divided into four sections.

Head position is crucial when haircutting. If the client has their head turned up down or sideways the lengths of the haircut can be affected as well as the finished results.

Partings are lines that subdivide sections of hair in order to separate distribute and control the hair while cutting. The most common parting lines are horizontal, diagonal and vertical.

Natural distribution is the direction the hair assumes as if falls naturally from the head due to gravity.

Perpendicular distribution, the hair is combed at a 90 degree angle from its parting. This type of distribution can be used from any line and is primarily used to cut graduated and layered forms.

Shifted distribution when the hair is combed out of natural distribution in any direction except perpendicular to its parting, it is known as shifted distribution.

Directional distribution, the hair is distributed vertically or straight up from the head and horizontally or straight up from the head. Directional distribution results in length increases due to the curve of the head.

Projection also known as elevation is the angle at which the hair is held in relation to the curve of the head prior to cutting.

Finger and shear position refers to the position of the fingers and shear relative to the parting.

Design line is the artistic guideline used while cutting another name for a guideline.

Basic texturizing which is performed between the scalp and up to 2 inches from the scalp removes weight at the base area. For fine hair stay close to

the scalp for coarser hair stay up to 2 inches away from the scalp or the hair will lift and show through the hair.

Midstrand texturizing is used for thinning the hair and removing bulk in the middle of the strand of hair, this allows the haircut to fall into its desired shape.

End texturizing reduces bulk to allow for mobility. Used for straight thick hair around hairlines.

Razor etching is used to remove weight and length, usually used to create wisps in the hairline and to remove bulk so the hair stands up.

Slithering also referred to as effiliating, is a technique in which the shear is opened and closed rhythmically while moving upward from the ends, removes bulk and creates mobility.

Razor rotation is performed by rotating the razor and comb along the hair strand to remove weight and to sometimes bevel the hair upward or under for special effects.

Outlining the hair is a cutting technique used to define the perimeter hairline. A shear, razor or clipper may be used for this technique.

Shear over comb technique is controlling the hair with a comb, and then cutting the lengths protruding from the comb. This technique is used when the hair is too short to hold between your fingers.

Cross checking is checking the haircut you just completed in all directions. Check perimeter guideline for accurate finish, hair can wrap around an ear and not be cut. Check entire haircut before letting your client leave.

Infection control and follow safe working habits

- 1.** Do not cut past the second knuckle and you will prevent yourself from cutting the inside of your hand.
- 2.** Always hold shears in the locked position called palming so you do not accidentally poke someone.
- 3.** Wash and sanitize hands between each client.
- 4.** Perform a hair and scalp analysis on all client's
- 5.** Disinfect and sanitize all implements, tools and work station.
- 6.** When cutting near the eyes lift the hair onto your finger do not cut free hand.
- 7.** Protect the client by using a clean cape and always use a towel or neck strip. The cape can cause the spread of disorders and should never come in contact with the skin.
- 8.** Always use a guard on your razor to protect your fingers and the client's skin.
- 9.** Use a sharps container to dispose of blades.
- 10.** Sweep up cut hair before blow drying the hair so it will not blow across the room.
- 11.** Keep all used tools in a basket on your station and sanitize them at the end of the day by washing them with soap and water and then placing them into a dry sanitizer.
- 12.** Clean hydraulic chair under cushions and sanitize work area.
- 13.** Sweep and mop floors for a sanitized salon.
- 14.** Sinks should be cleaned with a disinfectant after use.
- 15.** All metal tools should be cleaned with the tools provided and oiled after each use. Disinfectant sprays may be used for your clippers.

Basic haircutting forms and cutting techniques

7 BASIC HAIR CUTTING FORMS

Basic Haircuts 7 Basic Forms

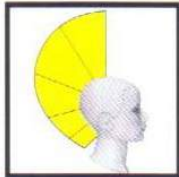


SOLID

Also known as one-length cut, bob, dutch boy, blunt cut, 0° angle cut

STRUCTURE: Shorter exterior progressing to longer interior

SHAPE: Rectangle or oval TEXTURE: unactivated



GRADUATED

Also known as wedge, 45° angle cut

STRUCTURE: Shorter exterior gradually progressing to longer interior

SHAPE: Triangle TEXTURE: unactivated

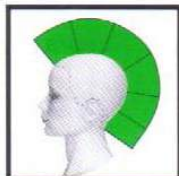


INCREASE-LAYERED

Also known as shag or 180° angle cut

STRUCTURE: Shorter interior progressing to longer exterior

SHAPE: Oval TEXTURE: activated

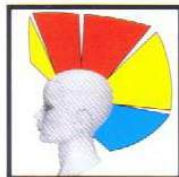


UNIFORMLY LAYERED

Also known as layered cut or 90° angle cut

STRUCTURE: Same length throughout

SHAPE: Circular TEXTURE: activated



COMBINATION

STRUCTURE: Two or more forms in any combination

SHAPE: Reflects forms chosen TEXTURE: activated

Men's grooming



Shaving hairlines requires a straight razor, shaving lotion cape and towels.

1. Drape client

2. Tools, straight razor, blades



3. Blades are very sharp, be careful. To load blade, place in blade slot and push on counter to load, do the same with the guard.



4. Hold blade correctly. Place shaving cream on neck.

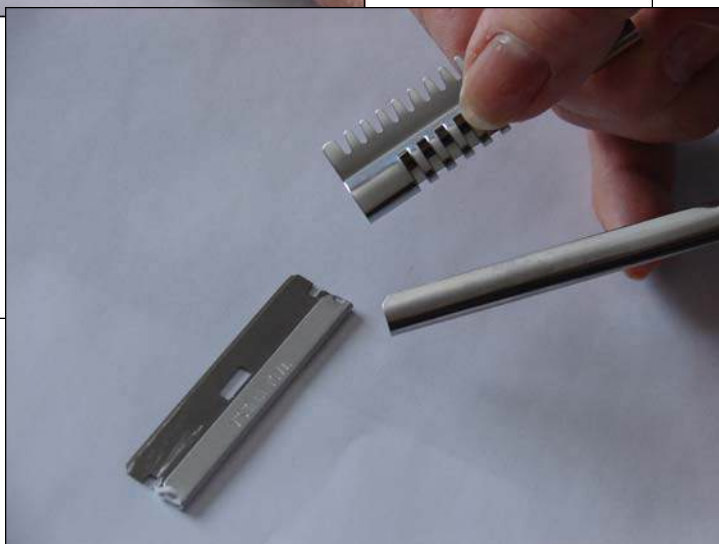
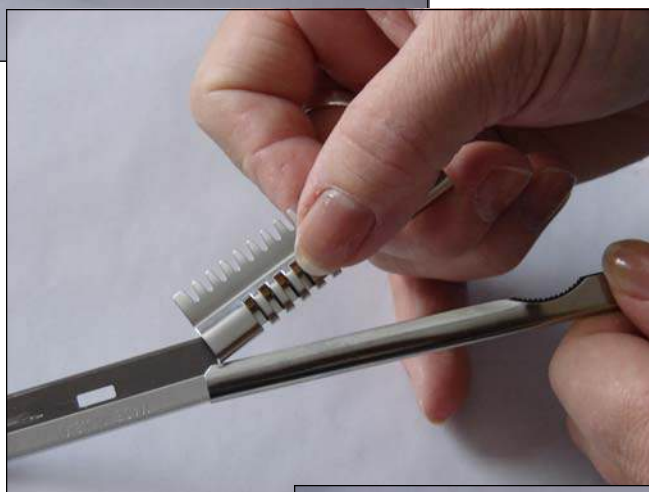


5. Place blade on neck, on a bit of a slant, gently shave the neck in a downward motion.



6. Clean around ear and switch to other side until the neck is shaved.

BLADE REMOVAL



MUSTACHES

A neat, short mustache is the look in today's business and fashion world. It doesn't require much maintenance. Don't let it grow beyond the upper lip or it starts to look messy.

The actual size and fullness of the mustache should work with the size of the man's facial features.

A mustache can:

- Camouflage a soft or aging jaw line.
- Shorten an overly rectangular or oblong shape
- Balance a large or round face.
- Goatees can infuse an element of squareness to a soft chin

To design the mustache for your client:

- Examine the length of the mouth
- Size of the nose
- Size and fullness of the upper lip area
- Width of the cheeks
- Shape and width of the jaws and chin area
- Density of hair growth
- Facial color and texture
- Mustache fashions and trends

Steps in trimming a mustache

1. Consult with the client as to the shape of the mustache if they want it to be slightly layered or just blunt.
2. Brush mustache hair down with a fine tooth mustache comb. Use a trimmer or mustache scissors.
3. Start in the middle and comb the hair upward with comb so you don't cut the lip.
4. Work your way to each side of the mouth, carefully trimming across the bottom of your mustache.
5. Take your time; don't cut too much at once.
6. Use either the scissors or trimmers.
7. Tidy up edges and under nose
8. Use mustache wax to shape

Mustache designs based on facial shapes

- Large facial features – heavy mustache will work with a larger face.
- Prominent nose – medium to larger mustache will balance a prominent or hooked nose.
- Long, narrow face – medium to narrow mustache works best.
- Extra- large mouth or prominent teeth – triangular or pyramid shaped mustache.
- Extra small mouth – medium, short mustache
- Small facial features – small triangular mustache
- Wide mouth with very prominent upper lip – heavy mustache or large handlebar mustache or a large, divided mustache.
- Round face with regular features – semi-square mustache
- Square face with prominent features – heavy, liner mustache with ends curving slightly downward.
- A full beard that is trimmed into a rounded or square shape and worn with a mustache will disguise a pointy or prominent chin.

BEARDS

Men have been sporting beards since prehistoric times. Some men choose a mustache without a beard and others choose to have a beard as well. Beards are much coarser, hot in the summer months but can change the outward appearance of the face.

Beards should be kept trimmed and neat or they take on a scruffy appearance.

Beard trim

1. Shampoo beard daily.
2. Use conditioner on beard to soften.
3. Towel dry and comb beard using large tooth comb.
4. Beards should be trimmed dry, or too much hair may be removed if wet.
5. Use sharp scissors or trimmers.
6. Begin by creating an outline around the beard.

7. Start under the chin with trimmers cutting as V have the point of the V under the chin. Trim the excess hair in the V to remove bulk under the chin. This will thin the beard and take away the build of the beard.
8. Trim around the ears combing the hair forward around the side burns and then back.
9. Trim the mustache.
10. Hold hair with comb at a 45 degree angle and lift and cut to trim the beard. Consult with client how much hair is to be removed.
11. Thinning shears can be used to remove excess bulk. Be careful not to compromise the shape you have created.
12. Check above beard on cheeks and use razor to clean shave these areas.
13. Apply paste or beard products.

SHAVING PROBLEMS

Razor burn is a temporary irritation or redness of the facial skin that occurs after shaving.

Causes:

- Shaving too hard or too fast
- Not applying warm water to your face before shaving
- Dull blades
- Using shaving creams, gels or soaps that irritate your face.
- Going over the same areas on your face without re-lathering.

Acne is a common skin problem for men. Acne is usually caused by too much sebum (oil) being produced in your pores. The excess oil combined with dead skin cells can lead to clogged pores which become inflamed and infected from bacteria and result in pimples (acne).

Causes:

- Diet too rich in fatty foods
- Puberty
- Poor diet
- Improper cleansing

Solutions:

Prescriptions
Light therapy

Brown spots, age spots, liver spots are all basically the same. They are small brown areas or patches that appear as we age on the back of your hands, arms and face. The cause for all of these conditions is too much sun exposure. Sunscreen should be recommended.

Puffy eyes and dark circles are caused from many things, too much sun, wind, outside work, too many hours at the office. Anti-aging products can be recommended.

Dry skin

- Skin feels tight, especially after shaving or washing
- Dull looking skin with rough patches
- Skin can peel, flake and look scaly particularly in the winter.
- Dry hands or elbows

Solutions:

- Gentle face wash
- Avoid products that sting your skin
- Avoid hot showers
- Use moisturizers on your face

Ingrown hair and razor bumps are hairs caught under the skin which become irritated and red bumps result. It can be painful and unsightly and is sometimes mistaken for acne.

Solutions:

- Exfoliate the skin
- Avoid disposable razors
- Don't use dull blades
- Use pre-shave oils with electric shavers
- Don't press too hard
- Shave in the same direction as your beard grows