



LIME STUC

U  
F  
F  
O  
P



# LIME STUC BY LOHO



## Lime finish fine

Lime finish fine can be used in all areas and is particularly suitable for wet areas such as bathrooms or indoor swimming pools.

Appearance: Matt  
 Material: Lime  
 Thickness: 1-2 mm  
 Usage: Only inside  
 Wet area: Yes



## Lime finish medium

A refined grainy wall plaster to apply on large indoor surfaces in a short period of time. Easy to process without sacrificing of its natural character or esthetic charm.

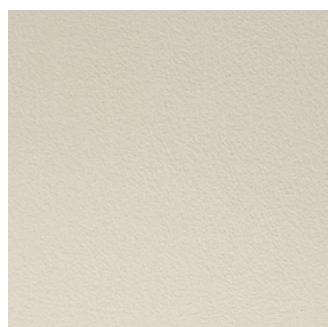
Appearance: Matt  
 Material: Lime  
 Thickness: 1-2 mm  
 Usage: Only inside  
 Wet area: Only indirectly



## Lime finish raw

The ideal raw wall/ceiling plaster to apply on large indoor surfaces in a short period of time. Lime finish raw has an authentic look and feel.

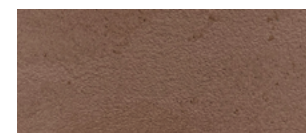
Appearance: Matt  
 Material: Lime  
 Thickness: 1-2 mm  
 Usage: In and outside  
 Wet area: Only indirectly



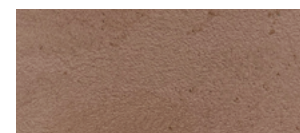
## Lime paint

Lime paint is developed as an addition or alternative to Lime finish. Surfaces subject to heavy wear such as rails, cabinets, objects etc will be better of with Lime paint.

Appearance: Mat  
 Material: Lime  
 Thickness: 1 mm  
 Usage: Only inside  
 Wet area: No



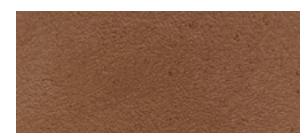
AMARANTH III



AMARANTH III



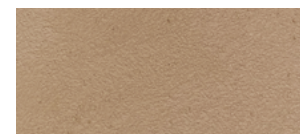
AMARANTH I



TERRA COTTA III



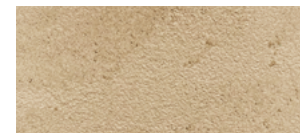
TERRA COTTA II



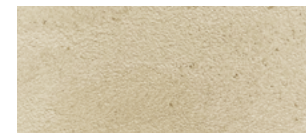
TERRA COTTA I



BONE III



BONE II



BONE I



BEIGE III



BEIGE II



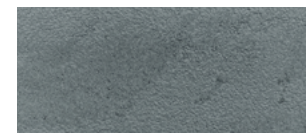
SAGE III



SAGE II



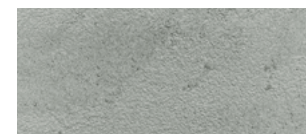
SAGE I



LAGOON III



LAGOON II



LAGOON I



GREY II



GREY III



BLACK III

Colours and materials as shown may vary from the original. No rights can be taken from this. For real colours, request samples. Some products may have more possible colours, ask us for all the possibilities.



Lime finish medium



