

ADDRESS  
MISS BORCES PADRES ST. GOCHAN COMPOUND,  
MABOLO CEBU CITY

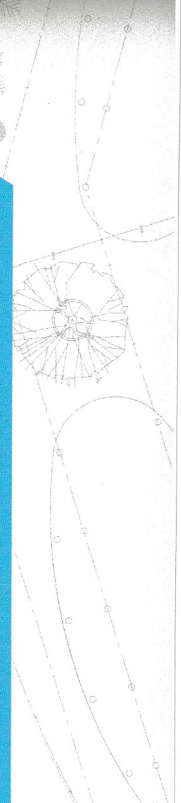


TELEPHONE #  
( 032 ) 328 - 7100



MOBILE #  
0917 653 6650  
0942 465 9125

# PATS PINOY TRADING CORP.





## Philmix G 501 (Type G)

- High range, water reducing and set retarding
  - Superplasticizer concrete admixture ASTM Type G
- Uses and Advantages:**
- Gives increased working life to fresh concrete
  - Increases workability without extra water, reducing placing time and costs.
  - Improves cohesion, minimizing segregation and improving surface finish
  - Chloride free, safe for use in pre-stressed and reinforced concrete

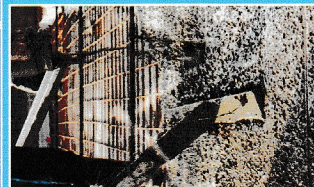


## Philmix F1 (Type F1)

High Range, Water Reducing Concrete Pre Cast Admixture  
ASTM C494 Type F

### Uses and Advantages:

- Substantial increase in workability without additional water
- High strength concrete produced at normal workability and cement contents.
- Uses include to produce flowing concrete for large pours and precast elements.
- Used where substantial water reductions are required to provide high early and ultimate strengths e.g. in precast factories.



## Philmix R1 (Type B & D)

Water Reducing, Set-Retarding Concrete Admixture ASTM C494 Type B & D

### Uses and Advantages:

- To extend working times of concrete.
- Retarding water reducing admixture
- To improve the effectiveness of the water content of a concrete mix.
- To help maintain the workability of ready mixed concrete deliveries in hot weather.
- Controlled retardation extends working life and stiffening time for ease of construction.
- Minimized transportation delay problems, maintains place ability and reduces the risk of pump blockage.



## Philcure 301

- Wax based Concrete Curing Compound

### Uses and Advantages:

- User friendly, no alkali and toxic materials
- Recommend for exterior and interior concreting
- Provides good surface finish by preventing shrinkage cracks
- Eliminates hairline cracking due to rapid water loss on hot weather concreting.
- Applicable to all types of concrete works especially to concrete constantly exposed to sunlight.

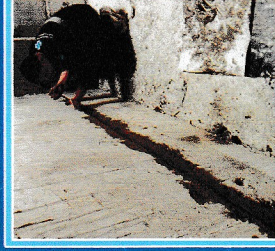


## Formplus XP

- Concrete Forms and mould release agent

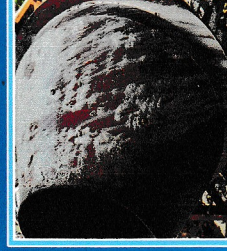
### Uses and Advantages:

- User friendly, no toxic odour
- Smooth concrete finishes after removal
- Ensure high-quality fair-faced and stain free concrete
- Reduces formwork costs due to releasing strip properties
- To provide quick, clean and easy stripping of moulds and forms



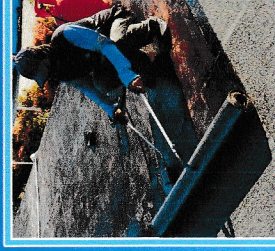
## PHIL Water Plug 308

- is a rapid setting hydraulic cement use for floor topping waterproof and tanking. It can be used also for instant leak plugging like cracks in concrete or masonry walls, swimming pools, sea walls, tunnels, basement, dams and others. Results would be a thoroughly hardened concrete which gives longer life span. Expands as it sets to ensure a permanent water light seal chloride free, will not promote corrosion of reinforcement.



## Concrete Remover

- Concrete remover is a fast-acting concrete remover for dissolving concrete and mortar residues from concrete mixers, trucks, trowels used in laying and transporting concrete as well as from surfaces that have been splashed with concrete.



## Bituminous Torch on Membrane

- is an APP (Atactic Polypropylene) plastomeric type modified based-sheet utilizing a specially formulated bituminous compound of distilled asphalt customized with selected high grade visco elastic polymers and inert filler. Natural grey or green mineral stone are applied on the topside of this membrane to increase its resistance against UV rays.



## Phil Foam (Backer Rod-Polyethylene Foam)

- is a soft white/grey, non greasing pliable backer rod.
- suited for speciality application such as irregular and varying joint widths.
- Controls the depth of the applied sealants and ensures cross sectional.



## Swellable Water Stop

- high performance hydrophilic swelling water stop. HYPERSWELL is made of high performance modified bentonite strips. The swelling action is the result between water and hydrophilic groups which are part of the HYPERSWELL molecular structure. Expansion of the water stop creates a positive seal against the face of the concrete joint and prevents the water entry into the structure through the protected joint.