




The Crestmark

Business Bay

A modern high-rise building with a glass facade and balconies, illuminated at dusk. The building is situated on a waterfront promenade with palm trees and a walkway. A boat is visible in the water in the foreground. The sky is a mix of blue and orange, suggesting sunset or sunrise. The building's name, 'ELLINGTON', is visible on the lower part of the facade.

A panorama of
glittering water and Dubai's
dynamic cityscape

ELLINGTON



The Crestmark celebrates the contemporary, promising a bold experience that melds with a serene palette of sophistication in its design. Set within the urban surroundings of Business Bay, it reflects the cosmopolitan lifestyles of its residents, whilst introducing pockets of calm through greenery and natural finishes.

The balance of well-being in bustling city centres is represented in the holistic development, which utilizes cozy timber hues and elevated materials to cocoon and welcome you into a refuge of relaxation. A place where you can make your own and find your corner of the city, The Crestmark embodies the vibrant energy of Ellington.

Scenic views of Business Bay Marina
and Dubai Water Canal



DRIVING DISTANCES

02
MINUTES
Business Bay Marina

12
MINUTES
Meydan Golf Course

05
MINUTES
Business Bay Metro Station

14
MINUTES
Dubai International Financial Centre

05
MINUTES
Dubai Mall / Burj Khalifa

14
MINUTES
Dubai International Airport

08
MINUTES
Dubai Opera

15
MINUTES
Mall of the Emirates

08
MINUTES
City Walk

17
MINUTES
La Mer Beach

09
MINUTES
Dubai Design District

19
MINUTES
Dubai Creek Golf & Yacht Club

10
MINUTES
Museum of the Future

20
MINUTES
Palm Jumeirah

The World Islands

La Mer Beach

Dubai Frame

Museum of Future

Dubai International Financial Center

City Walk

Jumeirah Beach

Emirates Hospital Jumeirah

JW Marriott Marquis Hotel

Burj Khalifa

Dubai Mall

Business Bay Marina

Ras Khor Wildlife Sactuary

Safa Park

Habtoor City

Dubai Water Canal

The Crestmark

Kite Beach

Mohammed Bin Rashid City

The Track Meydan Golf

Meydan Racecourse

Burj Al Arab

Mall of Emirates

Dubai Hills Mall

Dubai Hills Golf Club

Palm Jumeirah

The Lobby

A breathtaking double-height atrium space welcomes you with a sense of grandeur in the lobby. Soft curves follow the reception desk and metal screens, connecting movement between spaces with a seamless flow.

At the heart is a sculptural Bonsai tree inspired by a biophilic approach that brings the outside in, and provides an inviting environment to linger and stay for moments of social interaction or to work in a nurturing area for productivity.





Welcome to a property at the nexus of natural calm and urban vitality. Inside, residents can find balance from the comfort of home which follows neutral tones and a sophisticated colour palette.

Bringing together textures of metal, glass, and timber, the subtle elegance of the building is complemented with compositions of art. The Ellington Art Foundation has partnered with local artists and artisans to commission a bold collection of tonal art pieces throughout the development.

The signature piece will define a distinct place for those who thrive in the cultural magnetism of Dubai.

Library Lounge



Kidtropolis World



The Kidtropolis on the Ground Floor brings a world of play to life for children in a safe environment for learning.

Themed spaces including a car shop, grocery, hair salon, barber, and diner cafe create imaginative urban settings for the little ones to interact with others and pick up grooming and social skills. Adults can sit on benches within a park-like setting to watch or supervise their young close-by.

The Club Room

Behind a framed piece of artwork, access to the Secret Club Room is hidden and sparks an element of surprise to ignite a sense of discovery in everyone.

Vivid neon signages beyond the door signpost the entry into the Secret Club Room or Arcade Room. A metal mesh curtain that conceals the spaces draws you into a bookable function space with a lounge and dining area to seat up to 10. Coupled with a bar area furnished with an entertainment kitchenette, the space is fit for parties and catering. Overlooking a Private Garden that showcases kinetic artwork, a direct walk-out allows residents to find peace around every corner.



The Arcade

A retro Arcade Room with gaming machines such as skee ball, street basketball and pacman imbues feelings of nostalgia. With an elevated mini-bowling alley, table tennis, and TV gaming area, the activity-filled space is ideal for those who seek fun in their lives.

The area is accompanied by lounge seating as well as a direct connection to the garden and pool.



The Alley

With direct access to the garden courtyard, it serves as the perfect spot for the city dweller that aspires for a perfect balance of life in an urban oasis.

Bring the energy and excitement to your home with our indoor mini bowling alley. Experience life in the fun lane with friends and family here, which promises enjoyment for all.



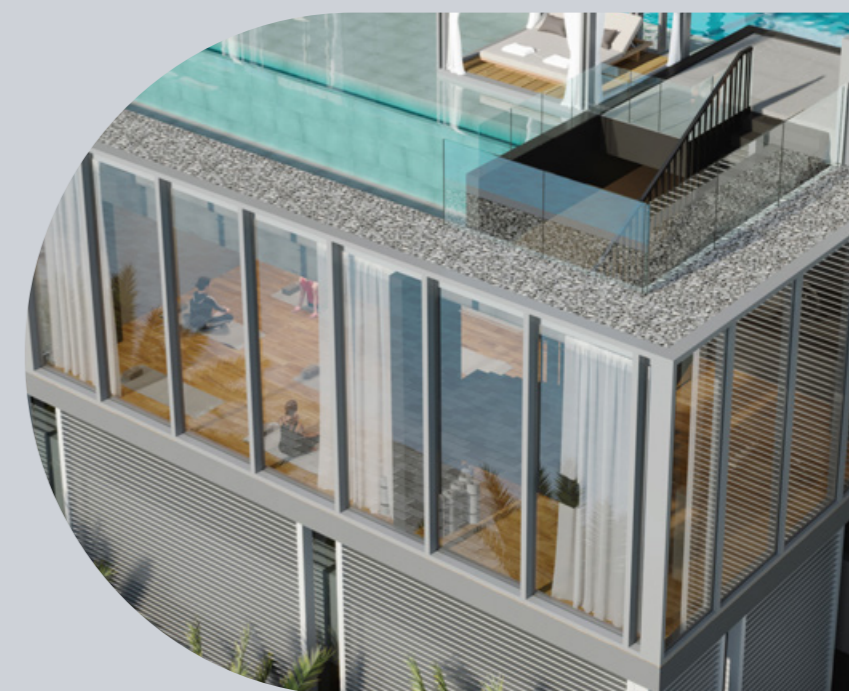
Fitness Studio

The Fitness Studio reinstates the importance of well-being in busy urban lifestyles, allowing you to work on your body and health while overlooking the landscaped pool area.

Fit for you and suited around varied training activities, the gym consists of precision state-of-the-art gym equipment, a rotating climbing treadwall and a zoned functional training rig.



Mind body and soul



Urban harmony comes together in the Yoga and Zen Room, which is tucked away in a quiet area, accessible through a path that leads down a staircase from the edge of the outdoor pool.

A raised meditation space overlooking the pristine water of the canal is poised for residents to connect with unobstructed views and the flow of nature outside. Textured wood flooring, acoustic ceilings, upholstered cushions and sheer drapes add an aspect of softness to this restorative haven.

The Pool

The resort-style 23-metre swimming pool and outdoor decks are thoughtfully designed to encompass leisure at the core of the community.

A Baja shelf with cabanas and ample hospitality-grade cushioned sun loungers allow for moments of relaxation within the robust landscape.



The Crestmark

GROUND FLOOR AMENITIES PLAN

- 1 DROP-OFF AREA
- 2 LOBBY ENTRANCE
- 3 LOBBY LOUNGE
- 4 LOBBY RECEPTION
- 5 LIBRARY AREA
- 6 HUB DESK
- 7 LIFT LOBBY
- 8 LIFT ENTRANCE
- 9 KIDTROPOLLIS WORLD
- 10 SERVICE LIFT
- 11 FURNITURE STORAGE
- 12 MOVE-IN TRUCK ZONE
- 13 BICYCLE PARKING WITH WASH AREA
- 14 VISITOR PARKING
- 15 LEDGE LOUNGER DECK
- 16 ACCESS TO CANAL BOARDWALK
- 17 VEHICLE ENTRANCE
- 18 VEHICLE EXIT



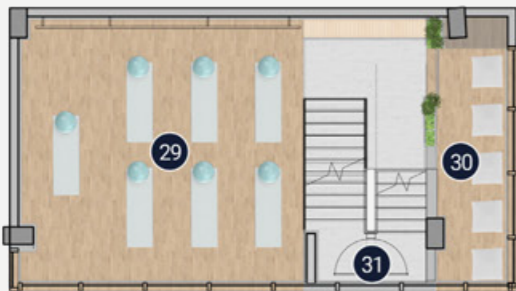
- 9.1 DINER CAFE
- 9.4 CAR SHOP
- 9.2 HAIR SALON
- 9.5 GAS STATION
- 9.3 SUPERMARKET
- 9.6 KIDS WASHROOM



The Crestmark

4TH FLOOR AMENITIES PLAN

- 1 LEISURE AND LOUNGE POOL
- 2 INFINITY POOL AREA
- 3 CABANAS
- 4 BAJA SHELF
- 5 KIDS POOL
- 6 POOL SUN LOUNGERS AREA
- 7 ACCESS TO POOL DECK & COURTYARD
- 8 MINI BOWLING ALLEY
- 9 ARCADE ROOM LOUNGE SEATS
- 10 ARCADE MACHINES
- 11 GAMES TABLE
- 12 SKEE BALL AREA
- 13 TV GAME ROOM
- 14 COURTYARD
- 15 KINETIC GARDEN
- 16 SECRET CLUB ROOM
- 17 BAR & KITCHENETTE
- 18 DINING AND LOUNGE AREA
- 19 CLUB ROOM TERRACE
- 20 FEMALE CHANGE, STEAM, SAUNA & SHOWER
- 21 MALE CHANGE, STEAM, SAUNA, & SHOWER
- 22 FUNCTIONAL TRAINING ZONE
- 23 TREADWALL
- 24 FITNESS STUDIO
- 25 LIFT LOBBY
- 26 BARBEQUE AREA
- 27 OUTDOOR YOGA AREA
- 28 OUTDOOR KIDS PLAY AREA
- 29 INDOOR YOGA AREA
- 30 ZEN ROOM
- 31 ACCESS TO WELLNESS STUDIO



3RD FLOOR WELLNESS STUDIO



The Views

Unwind in the comfort of your balcony, an outside extension of your living space. Bask in natural light and the tranquility that comes with beautiful views over the canal. The large area provided forms a perfect setting for sitting and watching the sunset over the water, or for entertaining guests against the backdrop of Dubai's iconic skyline.

The epitome of serenity amidst the pulsing energy of urban life, each outdoor balcony unit is the ultimate retreat for those who live between this duality.



Living and dining

Functionally designed to maximise views and flexibility, the living, dining and kitchen spaces merge around an open space within the apartment layouts.

Exceptional meets liveable in the spaces for gathering, giving you endless reasons to celebrate in style at home.



Rituals

Sophistication lies in the design of the bathroom spaces, finished with generous storage cabinets, warm porcelain flooring, and ribbed tiles that provide texture to the feature wall.

Enclosed with glass partitions framed with brush metal trims, the modern showers allow you to indulge in a spa-like ritual with the hand and rain shower heads. Stay stylishly organised for all your daily products with sintered stone shower shelving and stone countertops with mounted sinks that provide both practicality and aesthetic appeal.



Studio apartment



Internal Living Area
400.85 Sq. Ft

Outdoor Living Area
95.91 Sq. Ft

Total Living Area
496.75 Sq. Ft



1-bedroom apartment



TYPE A

Internal Living Area
662.63 Sq. Ft

Outdoor Living Area
84.39 Sq. Ft

Total Living Area
747.02 Sq. Ft



1-bedroom apartment



TYPE B

Internal Living Area
833.99 Sq. Ft

Outdoor Living Area
187.51 Sq. Ft

Total Living Area
1021.50 Sq. Ft



1-bedroom apartment

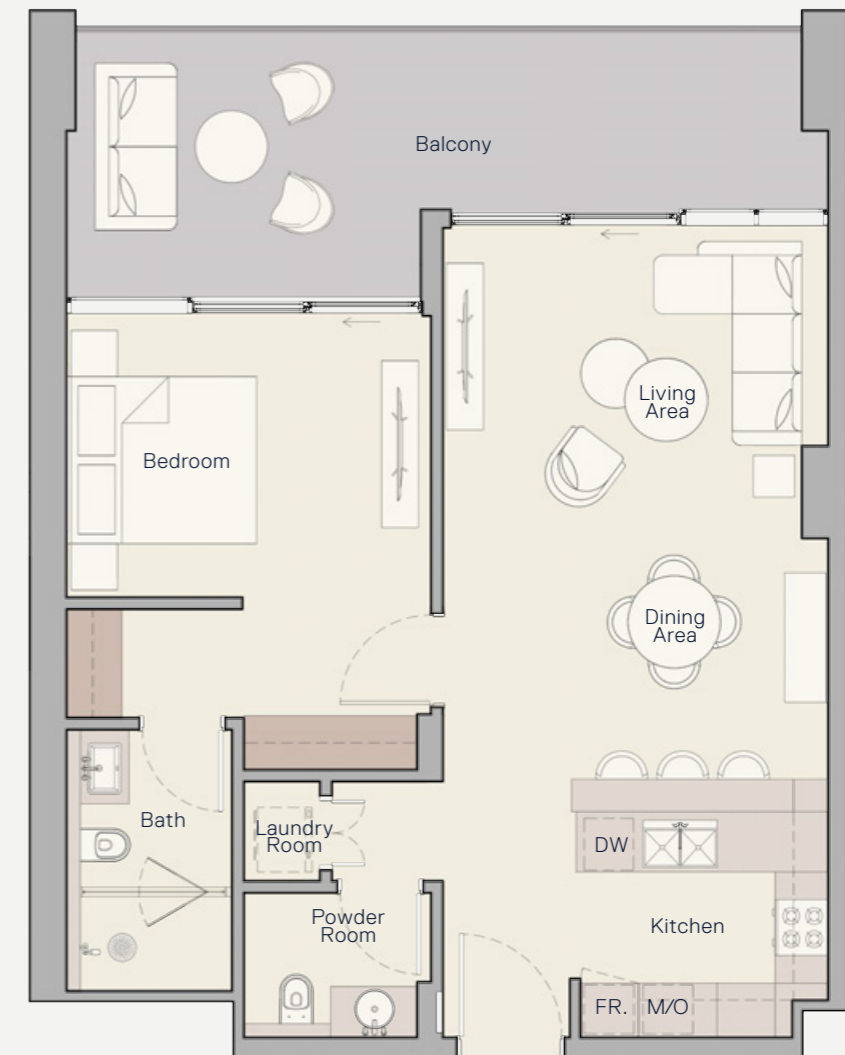


TYPE C

Internal Living Area
767.04 Sq. Ft

Outdoor Living Area
227.98 Sq. Ft

Total Living Area
995.02 Sq. Ft



1-bedroom apartment



TYPE D

Internal Living Area
874.24 Sq. Ft

Outdoor Living Area
175.67 Sq. Ft

Total Living Area
1049.91 Sq. Ft



1-bedroom apartment



TYPE E

Internal Living Area
662.84 Sq. Ft

Outdoor Living Area
111.84 Sq. Ft

Total Living Area
774.68 Sq. Ft



1-bedroom apartment



TYPE F

Internal Living Area
737.97 Sq. Ft

Outdoor Living Area
120.02 Sq. Ft

Total Living Area
857.99 Sq. Ft



2-bedroom apartment



TYPE A

Internal Living Area
1096.20 Sq. Ft

Outdoor Living Area
278.14 Sq. Ft

Total Living Area
1374.34 Sq. Ft



2-bedroom apartment



TYPE B

Internal Living Area
1076.18 Sq. Ft

Outdoor Living Area
162.86 Sq. Ft

Total Living Area
1239.03 Sq. Ft



2-bedroom apartment



TYPE C

Internal Living Area
947.12 Sq. Ft

Outdoor Living Area
115.71 Sq. Ft

Total Living Area
1062.83 Sq. Ft



2-bedroom apartment

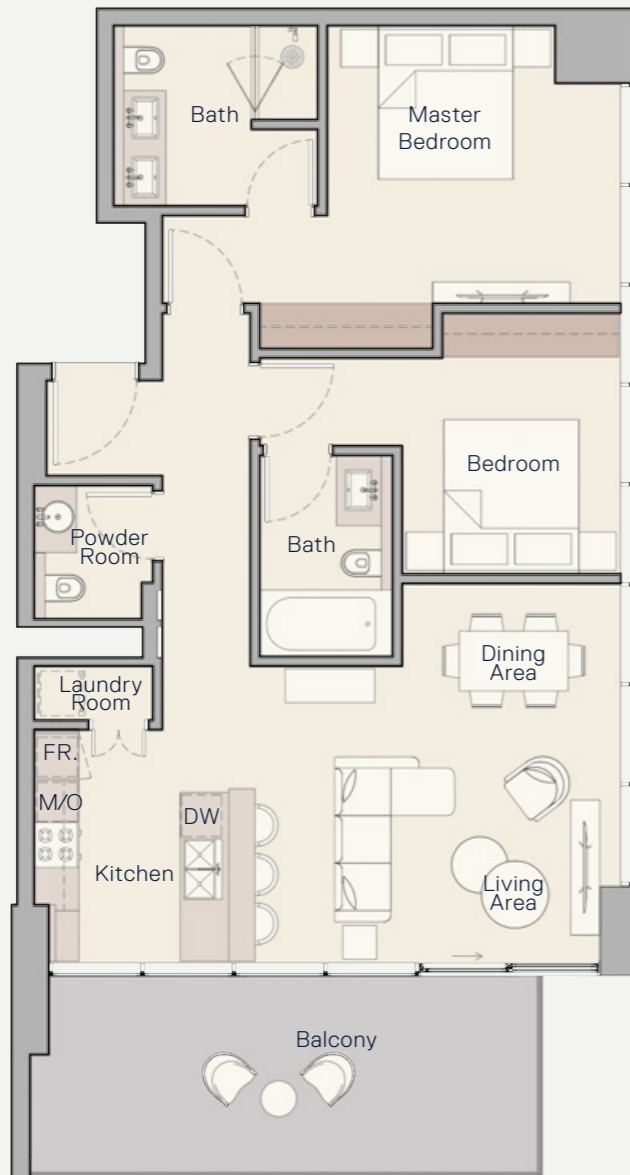


TYPE D

Internal Living Area
1021.93 Sq. Ft

Outdoor Living Area
198.49 Sq. Ft

Total Living Area
1220.41 Sq. Ft



2-bedroom apartment



TYPE E

Internal Living Area
1067.03 Sq. Ft

Outdoor Living Area
177.71 Sq. Ft

Total Living Area
1244.74 Sq. Ft



2-bedroom apartment



TYPE F

Internal Living Area
1168.21 Sq. Ft

Outdoor Living Area
145.42 Sq. Ft

Total Living Area
1313.63 Sq. Ft



2-bedroom apartment



TYPE G

Internal Living Area
1184.78 Sq. Ft

Outdoor Living Area
232.93 Sq. Ft

Total Living Area
1417.71 Sq. Ft



2-bedroom apartment



TYPE G

Internal Living Area
1191.67 Sq. Ft

Outdoor Living Area
218.62 Sq. Ft

Total Living Area
1410.29 Sq. Ft



3-bedroom apartment



TYPE A

Internal Living Area
1408.78 Sq. Ft

Outdoor Living Area
214.96 Sq. Ft

Total Living Area
1623.74 Sq. Ft



3-bedroom apartment



TYPE B

Internal Living Area
1415.35 Sq. Ft

Outdoor Living Area
305.70 Sq. Ft

Total Living Area
1721.04 Sq. Ft



3-bedroom apartment



TYPE C

Internal Living Area
2225.12 Sq. Ft

Outdoor Living Area
935.49 Sq. Ft

Total Living Area
3160.61 Sq. Ft



3-bedroom apartment



TYPE D

Internal Living Area
2579.25 Sq. Ft

Outdoor Living Area
933.98 Sq. Ft

Total Living Area
3513.23 Sq. Ft



4-bedroom apartment



TYPE A

Internal Living Area
2597.76 Sq. Ft

Outdoor Living Area
466.18 Sq. Ft

Total Living Area
3063.95 Sq. Ft



Penthouse apartment



TYPE A

Internal Living Area
3839.81 Sq. Ft

Outdoor Living Area
1607.91 Sq. Ft

Total Living Area
5447.72 Sq. Ft



Penthouse apartment



TYPE B

Internal Living Area
3988.57 Sq. Ft

Outdoor Living Area
2116.29 Sq. Ft

Total Living Area
6104.86 Sq. Ft



Penthouse apartment



TYPE C

Internal Living Area
2254.07 Sq. Ft

Outdoor Living Area
488.90 Sq. Ft

Total Living Area
2742.97 Sq. Ft



The renderings and visualizations contained in this brochure are provided for illustrative and marketing purposes. While the information provided is believed to be accurate and reliable at the time of printing, only the information contained in the final Sales and Purchase Agreement will have any legal effect.



800 8288
info@ellingtongroup.com

ELLINGTONPROPERTIES.AE