

Mustache

Paolo Zani, 2018-2020



Rug

Una linea di tappeti outdoor caratterizzata dalla tramatura mèlange. Bordature colorate e frange li rendono ancora più raffinati. Ogni tappeto è un pezzo unico, lavorato con telaio a mano.

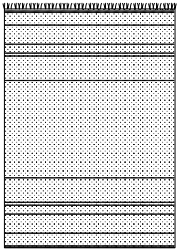
A collection of sustainable fibre carpets, featuring a melange weave, coloured edge trims and fringes. Each carpet is a unique hand-loomed item.

Eine Linie von Teppichen aus nachhaltigen Fasern, die sich durch ein Gewebe mit Mèlange-Effekt und Kettelung in verschiedenen Farben und Fransen auszeichnen. Jeder Teppich ist ein von Hand am Rahmen gewebtes Einzelstück.

Ligne de tapis en fibres durables, caractérisée par un tissage mèlangé, par un bordage coloré et par des franges. Chaque tapis est une pièce unique et est tissé avec un métier à tisser manuel.

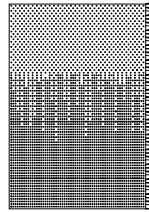
KRISTALIA

Dimensions



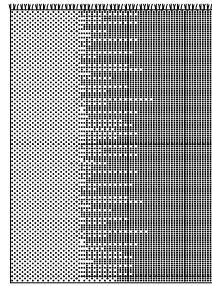
-BAA
250 x 350 cm
98^{3/8}" x 137^{5/8}"

Yarn: 80% wool/viscose, 20% cotton
Back: polyester fabric with non-slip pvc
Technique: hand woven on frame
Wash only dry and not in water,
Recommended the steam washing.
Dimensional tolerance: ± 3%

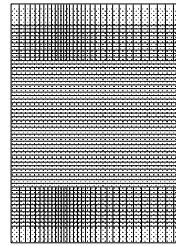


-GA (Small)
200 x 300 cm
78^{5/8}" x 118^{1/8}"

Yarn: 100% polypropylene
Technique: hand-woven on a frame
Water-resistant
Internal UV colour fastness: 8/8
External UV colour fastness: 4-5/8
Colourfastness to washing: 5/5
Tested: ISO 105B02 – ISO 105B04
Dimensional tolerance: ± 3%

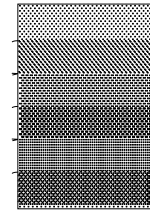


-GA (Large)
300 x 400 cm
118^{1/8}" x 157^{4/8}"



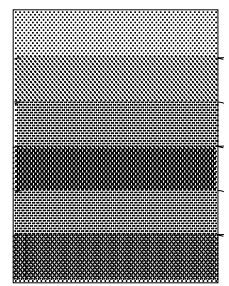
-MIAB
250 x 350 cm
98^{3/8}" x 137^{5/8}"

Yarn: 100% recycled PET
Back: polyester fabric with non-slip pvc
Technique: hand woven on frame
Wash only dry and not in water,
Recommended the steam washing.
Dimensional tolerance: ± 3%

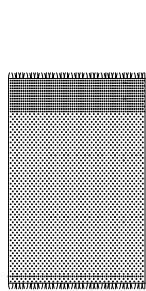


-RE (Small)
200 x 300 cm
78^{5/8}" x 118^{1/8}"

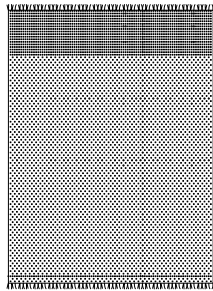
Yarn: 100% polypropylene
Technique: hand-woven on a frame
Water-resistant
Internal UV colour fastness: 8/8
External UV colour fastness: 4-5/8
Colourfastness to washing: 5/5
Tested: ISO 105B02 – ISO 105B04
Dimensional tolerance: ± 3%



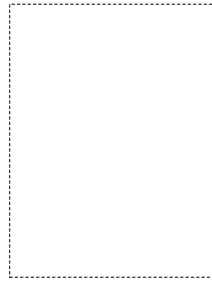
-RE (Large)
300 x 400 cm
118^{1/8}" x 157^{4/8}"



-SA (Small)
200 x 300 cm
78^{5/8}" x 118^{1/8}"



-SA (Large)
300 x 400 cm
118^{1/8}" x 157^{4/8}"



Custom

Yarn: 100% polypropylene
Technique: hand-woven on a frame
Water-resistant
Internal UV colour fastness: 8/8
External UV colour fastness: 4-5/8
Colourfastness to washing: 5/5
Tested: ISO 105B02 – ISO 105B04
Dimensional tolerance: ± 3%

More finishes and coverings info:

[Materials & Finishes](#)