



## Clapis

Clapis is a bed with minimalist aesthetic appeal, featuring a headboard rounded like a stone (a ‘clap’ in the Friulian language) smoothed by water. It is available in four variations: raised on slender recessed feet, floor-standing, a sommier version, with a headboard, and with a headboard and storage unit, to optimise the space under the bedspring. Designed for the greatest comfort and ergonomics, the sommier and the floor-standing versions with a headboard but without a storage unit are available in seven different heights for the mattress recessed in the bedframe.

DESIGN Bluezone

Clapis è un letto dall'estetica essenziale, caratterizzato dalla testiera arrotondata come un sasso (clap, in lingua friulana) levigato dall'acqua. È disponibile in quattro varianti: rialzato su piedini sottili e rientranti o a terra, in versione sommier, con testiera e con testiera e contenitore, per ottimizzare lo spazio sotto la rete. Studiato per la migliore comodità ed ergonomia, nelle versioni sommier e a terra con testiera senza contenitore presenta sette possibili altezze nell'incasso tra rete e materasso.

Bluezone

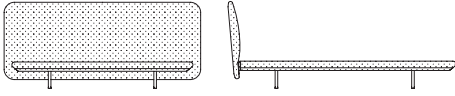
---

In 1997 Kristalia created an in-house structure that deals with research and development, where new materials and manufacturing techniques are for product engineering are experimented. The work group, which is composed of professionals and technicians with solid and varied experience in the field of design and communication, can rely on a well-equipped prototype shop to give shape to new ideas.

Dal 1997 Kristalia ha creato una struttura interna che si occupa di ricerca e sviluppo, dove si sperimentano nuovi materiali e nuove tecniche costruttive per l'ingegnerizzazione dei prodotti. Il gruppo, che è formato da professionisti e tecnici che hanno una consolidata e diversificata esperienza nel campo della progettazione e della comunicazione, può contare su di un attrezzatissimo reparto di prototipazione nel quale dare forma alle nuove idee.

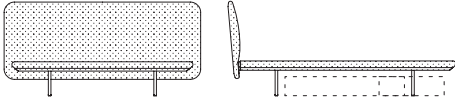
Sizes

H 86 cm  
H 33<sup>7</sup>/<sub>8</sub>"



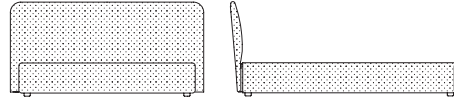
On low feet

H 93 cm  
H 35<sup>5</sup>/<sub>8</sub>"



On high feet

H 89 cm  
H 35"



On floor

For mattresses

L 90 P 200 cm L 153 P 203 cm L 183 P 203 cm  
W 35<sup>3</sup>/<sub>8</sub>" D 78<sup>6</sup>/<sub>8</sub>" W 60<sup>2</sup>/<sub>8</sub>" D 79<sup>7</sup>/<sub>8</sub>" W 74<sup>6</sup>/<sub>8</sub>" D 79<sup>7</sup>/<sub>8</sub>"

L 100 P 200 cm L 160 P 190 cm L 190 P 200 cm  
W 39<sup>3</sup>/<sub>8</sub>" D 78<sup>6</sup>/<sub>8</sub>" W 63" D 74<sup>6</sup>/<sub>8</sub>" W 74<sup>6</sup>/<sub>8</sub>" D 78<sup>6</sup>/<sub>8</sub>"

L 120 P 200 cm L 160 P 200 cm L 193 P 203 cm  
W 47<sup>3</sup>/<sub>8</sub>" D 78<sup>6</sup>/<sub>8</sub>" W 63" D 78<sup>6</sup>/<sub>8</sub>" W 76" D 79<sup>7</sup>/<sub>8</sub>"

L 140 P 200 cm L 170 P 200 cm  
W 55<sup>1</sup>/<sub>8</sub>" D 78<sup>6</sup>/<sub>8</sub>" W 66<sup>7</sup>/<sub>8</sub>" D 78<sup>6</sup>/<sub>8</sub>"

L 150 P 200 cm L 180 P 200 cm  
W 59" D 78<sup>6</sup>/<sub>8</sub>" W 70<sup>7</sup>/<sub>8</sub>" D 78<sup>6</sup>/<sub>8</sub>"

For mattresses

L 90 P 200 cm L 153 P 203 cm L 183 P 203 cm  
W 35<sup>3</sup>/<sub>8</sub>" D 78<sup>6</sup>/<sub>8</sub>" W 60<sup>2</sup>/<sub>8</sub>" D 79<sup>7</sup>/<sub>8</sub>" W 74<sup>6</sup>/<sub>8</sub>" D 79<sup>7</sup>/<sub>8</sub>"

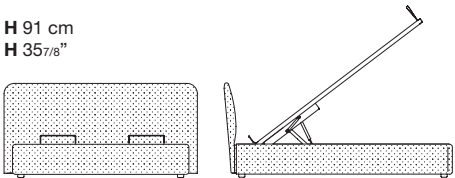
L 100 P 200 cm L 160 P 190 cm L 190 P 200 cm  
W 39<sup>3</sup>/<sub>8</sub>" D 78<sup>6</sup>/<sub>8</sub>" W 63" D 74<sup>6</sup>/<sub>8</sub>" W 74<sup>6</sup>/<sub>8</sub>" D 78<sup>6</sup>/<sub>8</sub>"

L 120 P 200 cm L 160 P 200 cm L 193 P 203 cm  
W 47<sup>3</sup>/<sub>8</sub>" D 78<sup>6</sup>/<sub>8</sub>" W 63" D 78<sup>6</sup>/<sub>8</sub>" W 76" D 79<sup>7</sup>/<sub>8</sub>"

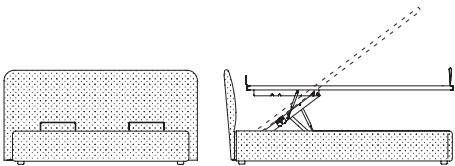
L 140 P 200 cm L 170 P 200 cm  
W 55<sup>1</sup>/<sub>8</sub>" D 78<sup>6</sup>/<sub>8</sub>" W 66<sup>7</sup>/<sub>8</sub>" D 78<sup>6</sup>/<sub>8</sub>"

L 150 P 200 cm L 180 P 200 cm  
W 59" D 78<sup>6</sup>/<sub>8</sub>" W 70<sup>7</sup>/<sub>8</sub>" D 78<sup>6</sup>/<sub>8</sub>"

H 91 cm  
H 35<sup>7</sup>/<sub>8</sub>"



With storage, lifting 45°



With storage, lifting 45°+ horizontal

For mattresses

L 150 P 200 cm L 160 P 200 cm L 183 P 203 cm  
W 59" D 78<sup>6</sup>/<sub>8</sub>" W 63" D 78<sup>6</sup>/<sub>8</sub>" W 74<sup>6</sup>/<sub>8</sub>" D 79<sup>7</sup>/<sub>8</sub>"

L 153 P 203 cm L 170 P 200 cm L 190 P 200 cm  
W 60<sup>2</sup>/<sub>8</sub>" D 79<sup>7</sup>/<sub>8</sub>" W 66<sup>7</sup>/<sub>8</sub>" D 78<sup>6</sup>/<sub>8</sub>" W 74<sup>6</sup>/<sub>8</sub>" D 78<sup>6</sup>/<sub>8</sub>"

L 160 P 190 cm L 180 P 200 cm L 193 P 203 cm  
W 63" D 74<sup>6</sup>/<sub>8</sub>" W 70<sup>7</sup>/<sub>8</sub>" D 78<sup>6</sup>/<sub>8</sub>" W 76" D 79<sup>7</sup>/<sub>8</sub>"

TECHNICAL DETAILS

Sizes

H 32 cm  
H 12<sup>5</sup>/<sub>8</sub>"

H 32 cm  
H 12<sup>5</sup>/<sub>8</sub>"



Sommier



Sommier with storage, lifting 45°



Storage unit under the bed  
Available for bed with high feet  
L 91 P 61 H 19 cm  
W 35<sup>7</sup>/<sub>8</sub>" D 24" H 7<sup>3</sup>/<sub>8</sub>"

L 116 P 51 H 19 cm  
W 45<sup>5</sup>/<sub>8</sub>" D 20<sup>1</sup>/<sub>8</sub>" H 7<sup>3</sup>/<sub>8</sub>"



Sommier with storage, lifting 45°+ horizontal

For mattresses

L 90 P 200 cm L 153 P 203 cm L 183 P 203 cm  
W 35<sup>3</sup>/<sub>8</sub>" D 78<sup>6</sup>/<sub>8</sub>" W 60<sup>2</sup>/<sub>8</sub>" D 79<sup>7</sup>/<sub>8</sub>" W 74<sup>6</sup>/<sub>8</sub>" D 79<sup>7</sup>/<sub>8</sub>"

L 100 P 200 cm L 160 P 190 cm L 190 P 200 cm  
W 39<sup>3</sup>/<sub>8</sub>" D 78<sup>6</sup>/<sub>8</sub>" W 63" D 74<sup>6</sup>/<sub>8</sub>" W 74<sup>6</sup>/<sub>8</sub>" D 78<sup>6</sup>/<sub>8</sub>"

L 120 P 200 cm L 160 P 200 cm L 193 P 203 cm  
W 47<sup>3</sup>/<sub>8</sub>" D 78<sup>6</sup>/<sub>8</sub>" W 63" D 78<sup>6</sup>/<sub>8</sub>" W 76" D 79<sup>7</sup>/<sub>8</sub>"

L 140 P 200 cm L 170 P 200 cm  
W 55<sup>1</sup>/<sub>8</sub>" D 78<sup>6</sup>/<sub>8</sub>" W 66<sup>7</sup>/<sub>8</sub>" D 78<sup>6</sup>/<sub>8</sub>"

L 150 P 200 cm L 180 P 200 cm  
W 59" D 78<sup>6</sup>/<sub>8</sub>" W 70<sup>7</sup>/<sub>8</sub>" D 78<sup>6</sup>/<sub>8</sub>"

For mattresses

L 150 P 200 cm L 160 P 200 cm L 183 P 203 cm  
W 59" D 78<sup>6</sup>/<sub>8</sub>" W 63" D 78<sup>6</sup>/<sub>8</sub>" W 74<sup>6</sup>/<sub>8</sub>" D 79<sup>7</sup>/<sub>8</sub>"

L 153 P 203 cm L 170 P 200 cm L 190 P 200 cm  
W 60<sup>2</sup>/<sub>8</sub>" D 79<sup>7</sup>/<sub>8</sub>" W 66<sup>7</sup>/<sub>8</sub>" D 78<sup>6</sup>/<sub>8</sub>" W 74<sup>6</sup>/<sub>8</sub>" D 78<sup>6</sup>/<sub>8</sub>"

L 160 P 190 cm L 180 P 200 cm L 193 P 203 cm  
W 63" D 74<sup>6</sup>/<sub>8</sub>" W 70<sup>7</sup>/<sub>8</sub>" D 78<sup>6</sup>/<sub>8</sub>" W 76" D 79<sup>7</sup>/<sub>8</sub>"

FINISHES

Alveo fabric



111



130



200



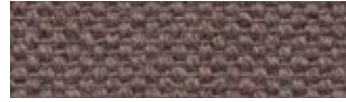
430



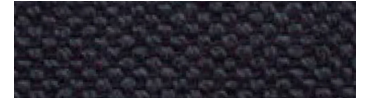
600



602



603



632



705



802



901



902

Composition: 100% recycled cotton  
Abrasion: app. 25.000 Martindale  
Cleaning and care:



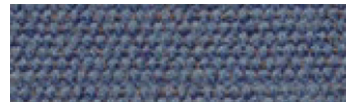
Biacco fabric



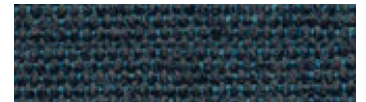
53



14



06



13



11



15

Composition: 75% recycled CO, 25% PL  
Abrasion: app. 40.000 Martindale  
Cleaning and care:



Borgo fabric



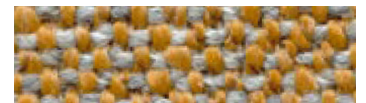
15



17



37



92



98



93



25



76



137

Composition: PC 51% , LI 11%, PL 11%,  
VI 11%, CO 16%  
Abrasion: app. 25.000 Martindale  
Cleaning and care:



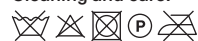
FINISHES

Canvas 2 (Kvadrat) fabric



Design: Giulio Ridolfo  
 Composition: 90% new wool,  
 worsted, 10% nylon

Abrasion: app. 100.000 Martindale  
 Cleaning and care:

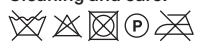


FINISHES

Divina Melange 3 (Kvadrat) fabric



Design: Finn Sködt  
 Composition: 100% new wool  
 Abrasion: app. 45.000 Martindale  
 Cleaning and care:



FINISHES

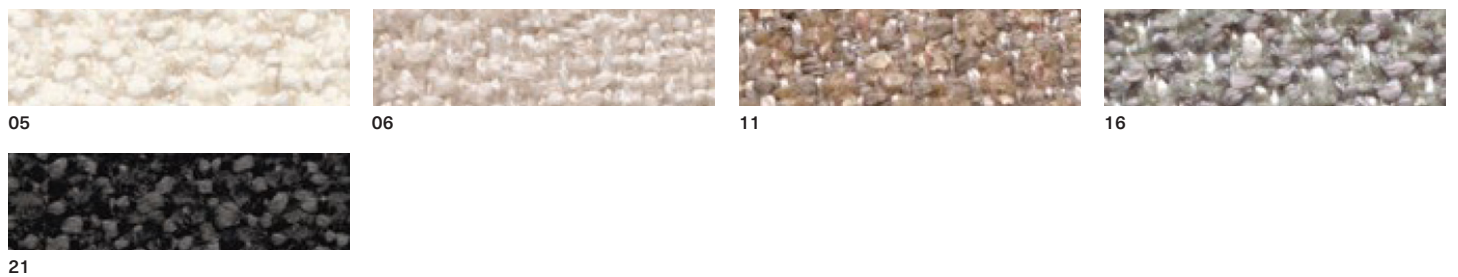
Field 2 (Kvadrat) fabric



Design: Alfredo Häberli  
 Composition: 100% Trevira CS  
 Abrasion: app. 100.000 Martindale

Cleaning and care:

Greto fabric



Composition: PL 33% , PC 25%,  
 VI 23%, CO 10%, LI 9%  
 Abrasion: app. 50.000 Martindale


Cleaning and care:



FINISHES

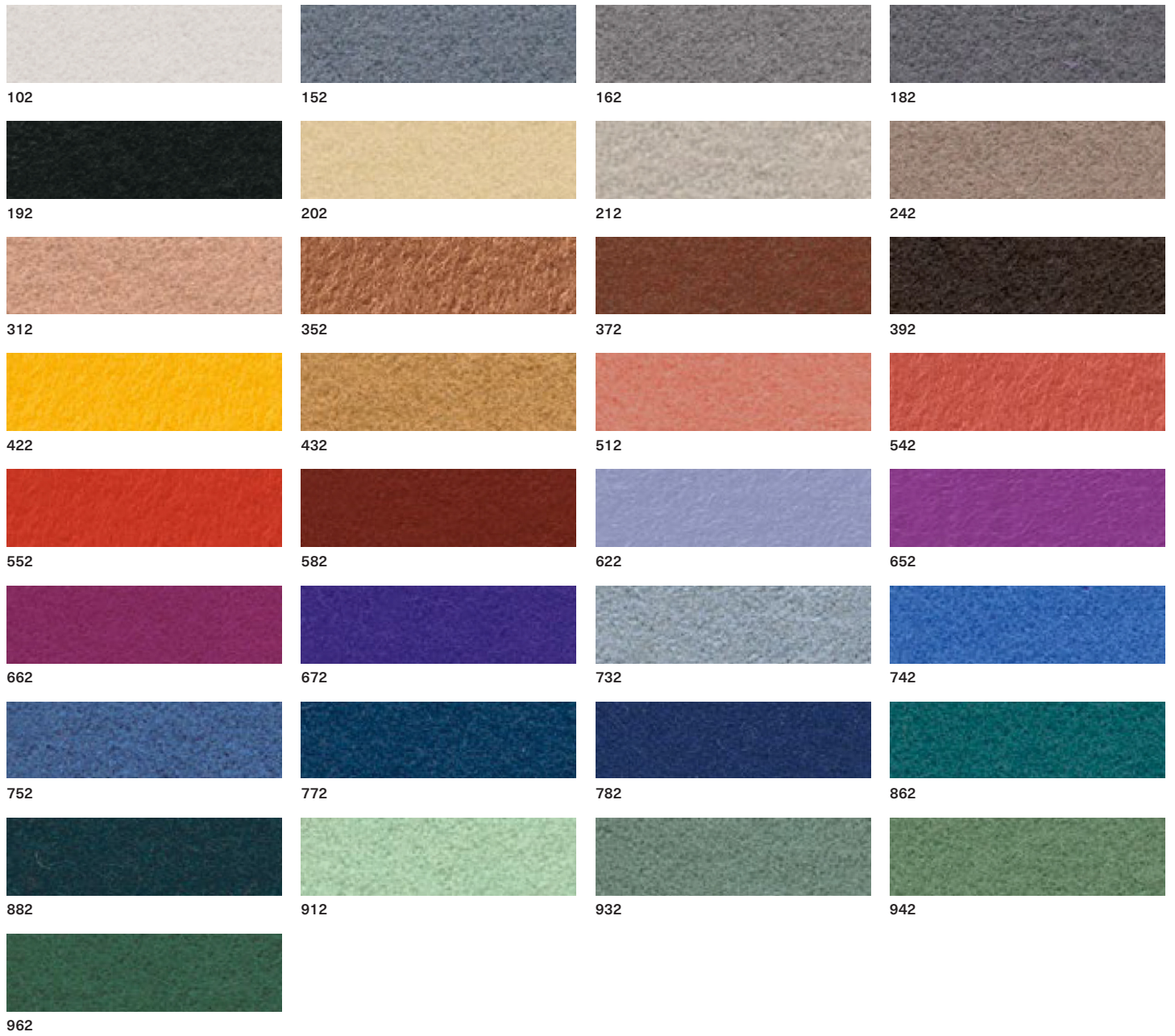
Hallingdal 65 (Kvadrat) fabric



Design: Nanna Ditzel  
 Composition: 70% new wool,  
 30% viscose  
 Abrasion: app. 100.000 Martindale  
 Cleaning and care:  


FINISHES

Hero 2 (Kvadrat) fabric



Composition: 96% new wool, 4% nylon  
 Abrasion: app. 45.000 Martindale  
 Cleaning and care:



Merit (Maharam) fabric



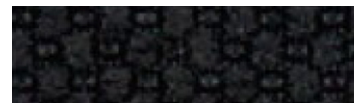
001



002



003



004



005



006



007



008



009



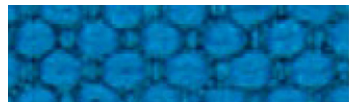
010



011



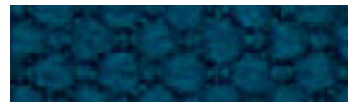
012



013



014



015



016



017



018



019



020



021



022



023



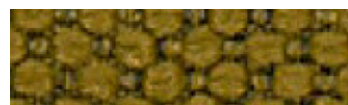
024



025



026



027



028



029



030



031



032



033



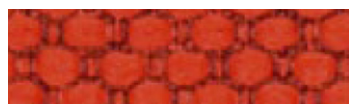
034



035



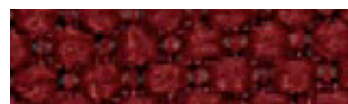
036



037



038



039



040



041



042



043

Composition: 76% post-consumer recycled polyester, 24% polyester  
 Abrasion: app. 85.000 Martindale  
 Cleaning and care:



FINISHES

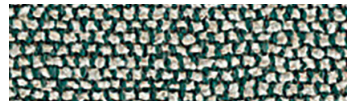
Moss (Sahco) fabric



0001



0002



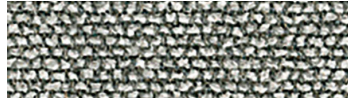
0003



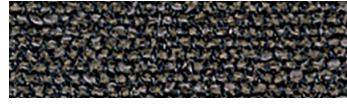
0004



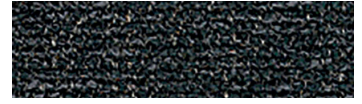
0005



0006



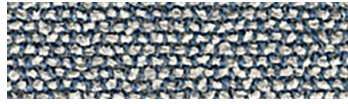
0007



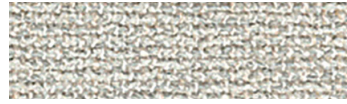
0008



0009



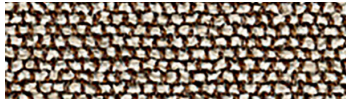
0010



0011



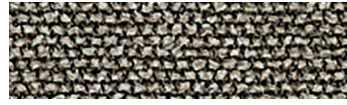
0012



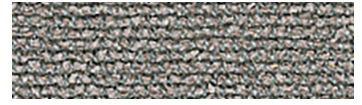
0013



0014



0015



0016



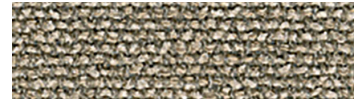
0017



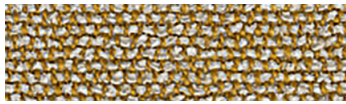
0018



0019



0020



0021



0022

Design: Vincent Van Duysen  
 Composition: 52% Cotton,  
 22% Viscose, 14% Acrylic,  
 6% Linen, 3% Polyester, 3% Nylon  
 Weight: 920 g/lin.m  
 Durability: 50.000 Martindale

Pilling: 4-5  
 Lightfastness: 6-7  
 Cleaning and care:

Orsetto (ONE Mario Sirtori) fabric



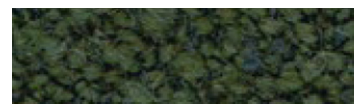
01/2



98/21



02/26



98/18



98/20

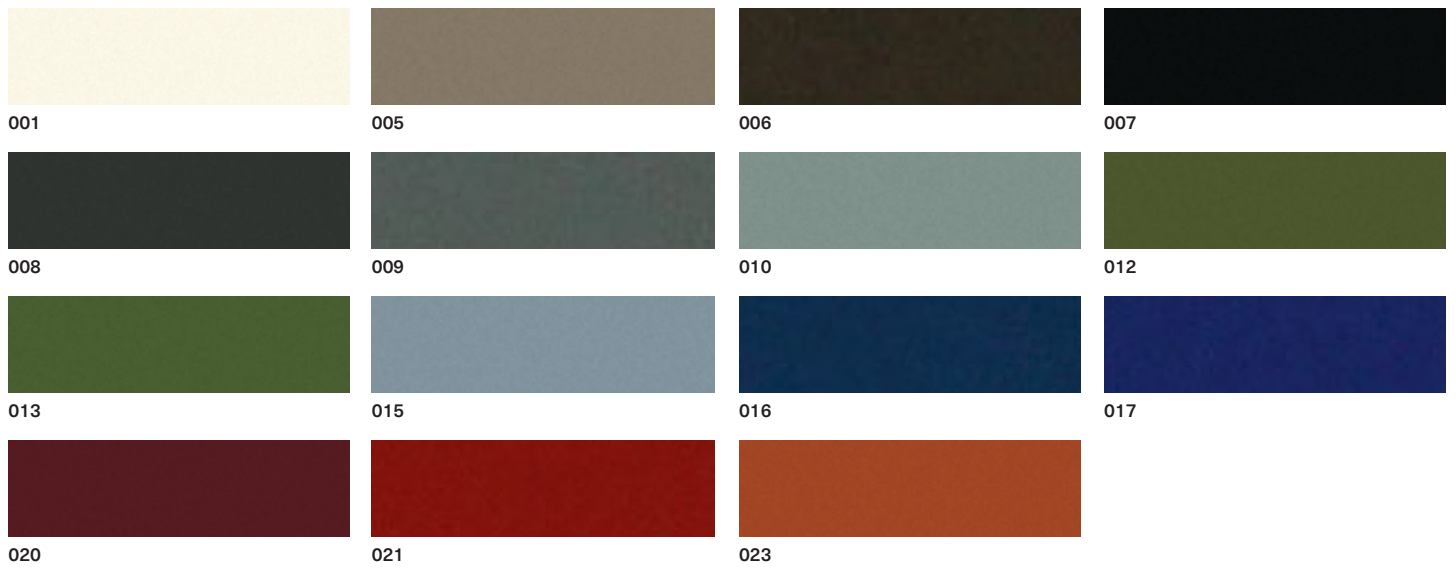


98/16

Composition: 34% Viscose, 33%  
 Acrylic, 17% Wool, 8% Polyester, 4%  
 Flax, 4% Cotton  
 Abrasion: app. 80.000 Martindale  
 Cleaning and care:

FINISHES

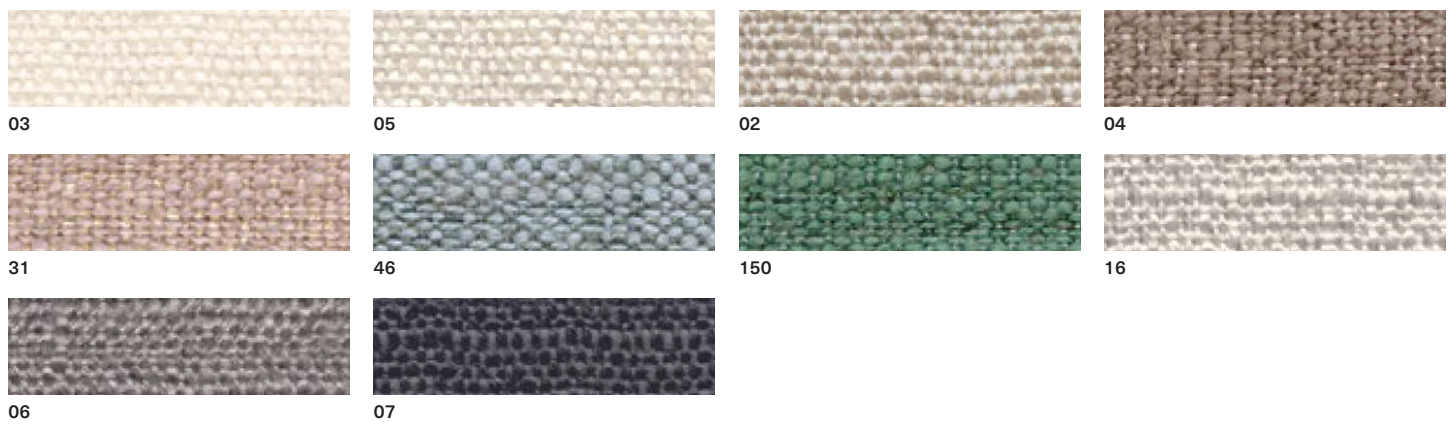
Scuba (Maharam) fabric



Composition: 100% polyurethane (surface), 100% polyester (backing)  
 Abrasion: app. 100.000 Martindale  
 Cleaning and care:



Stipa fabric



Composition: VI 34% , CO 31%, LI 15%,  
 PC 13%, PL 7%  
 Abrasion: app. 25.000 Martindale  
 Cleaning and care:



FINISHES

Steelcut Trio 3 (Kvadrat) fabric



Design: Frans Dijkmeijer  
and Giulio Ridolfo  
Composition: 90% new wool,  
worsted, 10% nylon  
Abrasion: app. 100.000 Martindale  
Cleaning and care:



FINISHES

Vello fabric



01



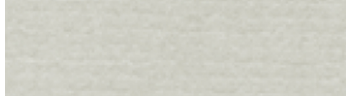
03



05



07



29



28



2002



26



14



70



2007



58



1041

Composition: 100% Cotton  
Abrasion: app. 70.000 Martindale  
Cleaning and care:



Verso fabric



01



03



51



05



09



30



10



15

Composition: VI 34% , CO 31% , LI 15% ,  
PC 13% , PL 7%  
Abrasion: app. 25.000 Martindale  
Cleaning and care:



FINISHES

Elmosoft IX (Elmo) semi-aniline leather

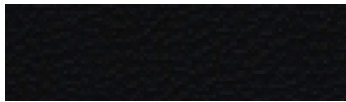




FINISHES

Neocoast leather (Elmo)

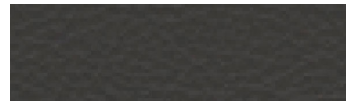
---



99076



91097



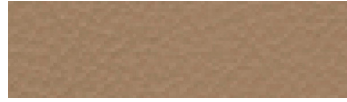
91100



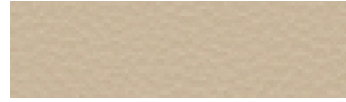
71010



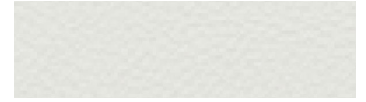
18008



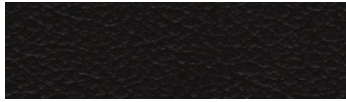
12097



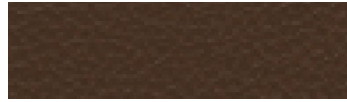
02061



00114



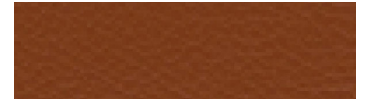
93090



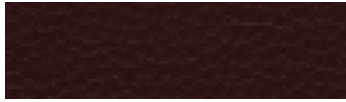
98016



43041



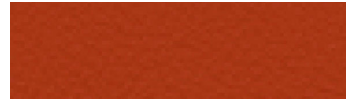
43084



95042



55058



45024



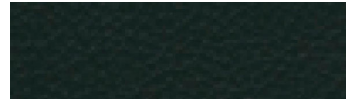
44015



77022



77035



98043



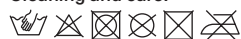
88017

FINISHES

Valencia synthetic leather (Spradling)



Composition: Topcoat 100% vinyl,  
backing 100% polyester Hi-Loft  
Abrasion: app. 300.000 Martindale  
Cleaning and care:



Shades of colour cannot be reproduced exactly on printed paper. MD House Srl is entitled to make modifications at any time and without prior notice.

Nella stampa su carta la tonalità dei colori non può essere riprodotta fedelmente. MD House Srl si riserva la facoltà di apportare modifiche in qualsiasi momento e senza preavviso.