



Bela

The designer duo Läufer&Keichel have developed a small armchair with soft enveloping contours. It's ideal in the living area and in the bedroom, either on its own or as a pair. Bela features a deep and generous seat padded with polyurethane foam, whereas comfort is increased with elastic straps. The tailored craftsmanship of the upholstery enhances the curve of the enveloping backrest, which extends to create the armrests. The elegant base support is made of solid ash wood, shaped around the seat for perfect integration.

DESIGN Läufer & Keichel

Il duo di designer Läufer&Keichel mette a punto una poltroncina dalle linee morbide e accoglienti, ideale nella zona living ma anche in camera da letto, sia da sola sia in coppia. Bela è caratterizzata da una seduta profonda e generosa imbottita in poliuretano espanso, mentre il comfort è amplificato dalle cinghie elastiche. La cura sartoriale del rivestimento valorizza la curva dello schienale avvolgente, che si allunga a creare i braccioli. Elegante il basamento, in legno massello di frassino, sagomato intorno alla seduta per una perfetta integrazione.

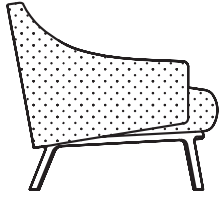
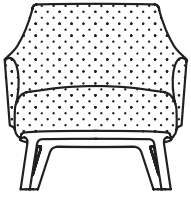
Läufer & Keichel



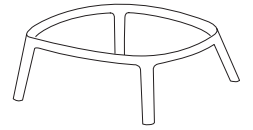
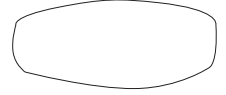
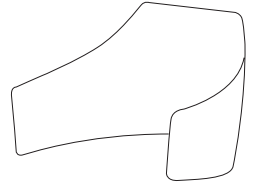
Läufer & Keichel is a creative partnership between Julia Läufer and Marcus Keichel. The pair have been working together since 2003. Their studio is located in the heart of Berlin. Focusing on sustainable design solutions, their disciplines range from furniture design and industrial design, through exhibition to corporate and communication design.

Läufer & Keichel è una partnership creativa tra Julia Läufer e Marcus Keichel. La coppia lavora insieme dal 2003. Il loro studio si trova nel cuore di Berlino. Concentrandosi su soluzioni di design sostenibile, le loro discipline spaziano dal design di mobili e design industriale, passando per la mostra al design aziendale e della comunicazione.

Dimensions



L 72 P 81 H 75 cm
W 28³/₈" D 31⁷/₈" H 29⁴/₈"



FINISHES

Alveo fabric



111



130



200



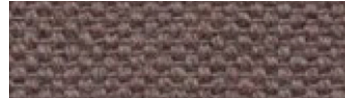
430



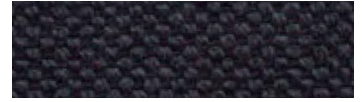
600



602



603



632



705



802



901



902

Composition: 100% recycled cotton
Abrasion: app. 25.000 Martindale
Cleaning and care:



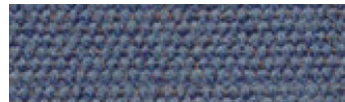
Biacco fabric



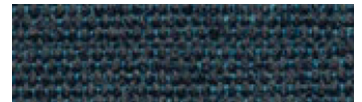
53



14



06



13



11



15

Composition: 75% recycled CO, 25% PL
Abrasion: app. 40.000 Martindale
Cleaning and care:



Borgo fabric



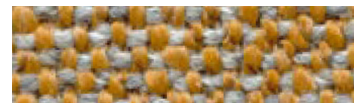
15



17



37



92



98



93



25



76



137

Composition: PC 51% , LI 11%, PL 11%,
VI 11%, CO 16%
Abrasion: app. 25.000 Martindale
Cleaning and care:



FINISHES

Canvas 2 (Kvadrat) fabric



Design: Giulio Ridolfo
Composition: 90% new wool,
worsted, 10% nylon

Abrasion: app. 100.000 Martindale
Cleaning and care:



FINISHES

Divina Melange 3 (Kvadrat) fabric



Design: Finn Sködt
 Composition: 100% new wool
 Abrasion: app. 45.000 Martindale
 Cleaning and care:



FINISHES

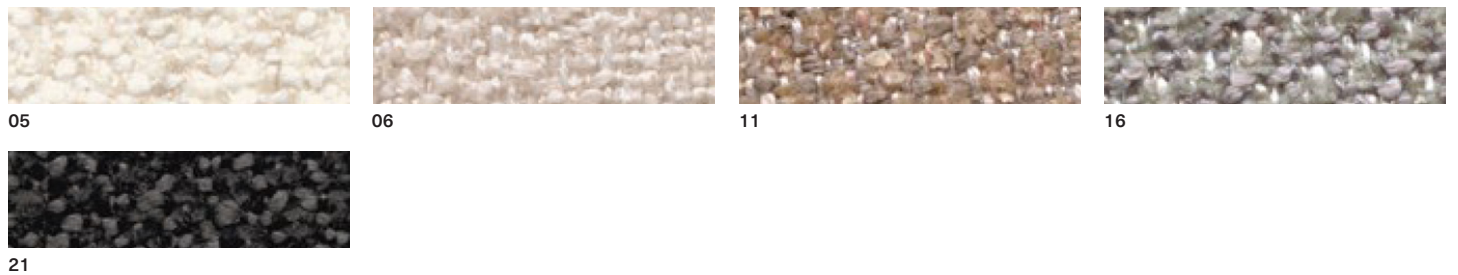
Field 2 (Kvadrat) fabric



Design: Alfredo Häberli
 Composition: 100% Trevira CS
 Abrasion: app. 100.000 Martindale

Cleaning and care:

Greto fabric



Composition: PL 33% , PC 25%,
 VI 23%, CO 10%, LI 9%
 Abrasion: app. 50.000 Martindale

Cleaning and care:

FINISHES

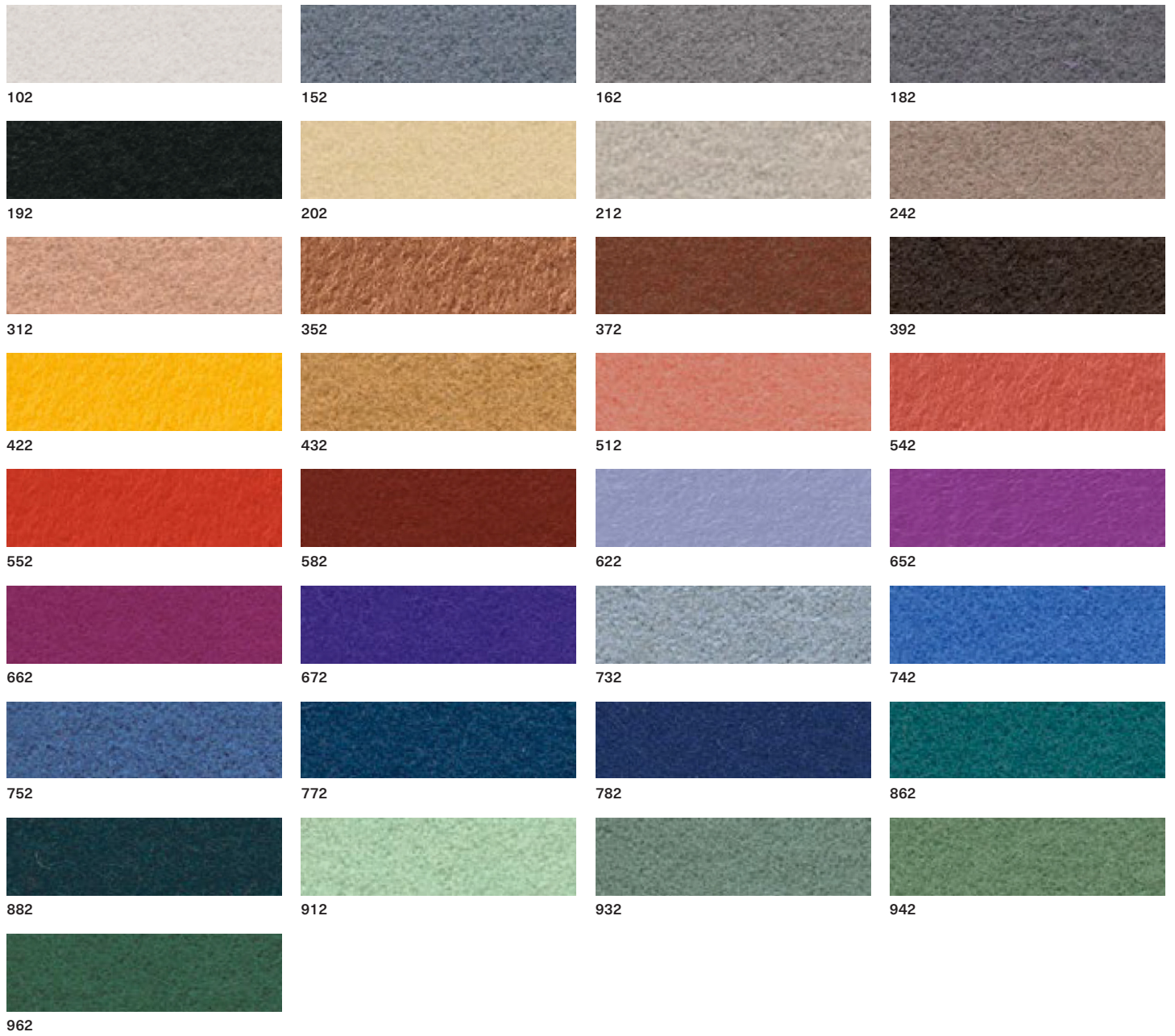
Hallingdal 65 (Kvadrat) fabric



Design: Nanna Ditzel
 Composition: 70% new wool,
 30% viscose
 Abrasion: app. 100.000 Martindale
 Cleaning and care:

FINISHES

Hero 2 (Kvadrat) fabric



Composition: 96% new wool, 4% nylon
 Abrasion: app. 45.000 Martindale
 Cleaning and care:



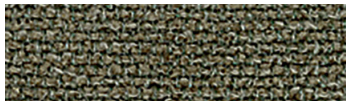
Merit (Maharam) fabric



Composition: 76% post-consumer recycled polyester, 24% polyester
 Abrasion: app. 85.000 Martindale
 Cleaning and care:



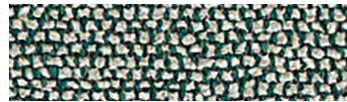
Moss (Sahco) fabric



0001



0002



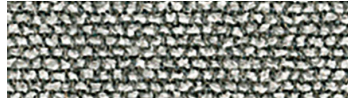
0003



0004



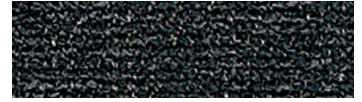
0005



0006



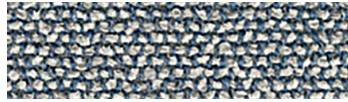
0007



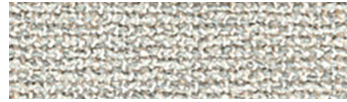
0008



0009



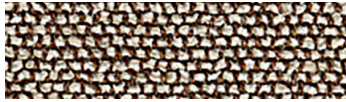
0010



0011



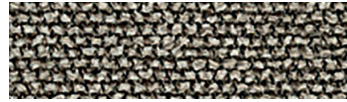
0012



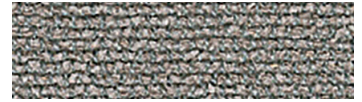
0013



0014



0015



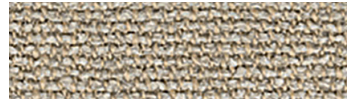
0016



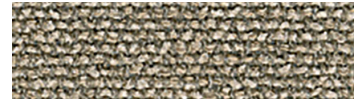
0017



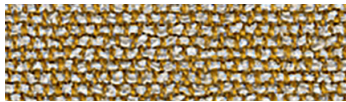
0018



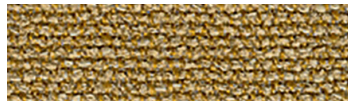
0019



0020



0021



0022

Design: Vincent Van Duysen
 Composition: 52% Cotton,
 22% Viscose, 14% Acrylic,
 6% Linen, 3% Polyester, 3% Nylon
 Weight: 920 g/lin.m
 Durability: 50.000 Martindale

Pilling: 4-5
 Lightfastness: 6-7
 Cleaning and care:

Orsetto (ONE Mario Sirtori) fabric



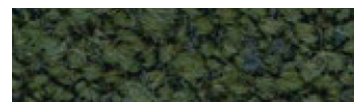
01/2



98/21



02/26



98/18



98/20



98/16

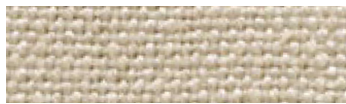
Composition: 34% Viscose, 33%
 Acrylic, 17% Wool, 8% Polyester, 4%
 Flax, 4% Cotton
 Abrasion: app. 80.000 Martindale
 Cleaning and care:

FINISHES

Parigi fabric



50



39



41



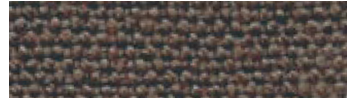
37



07



06



13



09



10



12



34



33



30



32



26



36



27



28

Composition: 100% linen
Abrasion: app. 30.000 Martindale

Cleaning and care:

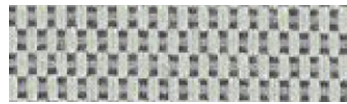
Patio (Kvadrat) fabric



100



110



140



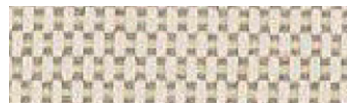
150



170



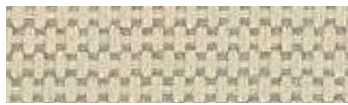
200



210



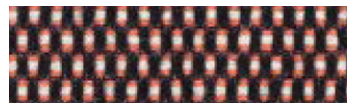
220



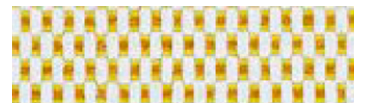
230



340



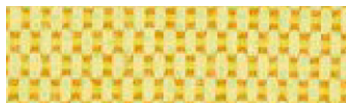
370



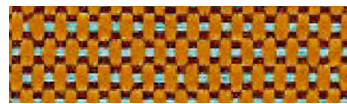
410



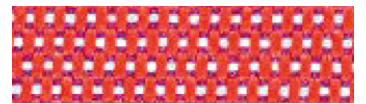
430



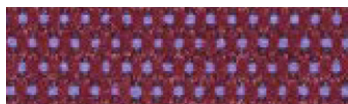
440



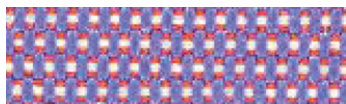
450



550



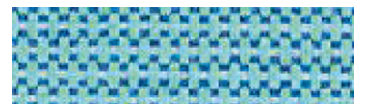
570



650



730



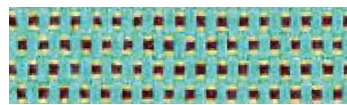
740



750



780



840



970

Design: Karina Nielsen Rios
Composition: 100% Trevira CS,
water repellent finish

Abrasion: app. 50.000 Martindale
Cleaning and care:

FINISHES

Remix 3 (Kvadrat) fabric



Composition: 90% new wool,
worsted, 10% nylon
Abrasion: app. 100.000 Martindale

Cleaning and care:



FINISHES

RePo 3D fabric



BIT 105



BIT 106



BIT 109



BIT 107



BIT 108



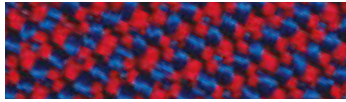
BIT 804



BIT 305



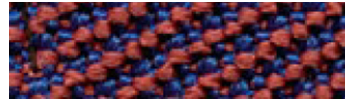
BIT 807



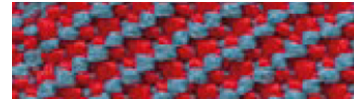
BIT 307



BIT 308



BIT 703



BIT 306



BIT 305



BIT 705



BIT 605



BIT 600

Composition: 98% recycled polyester,
2% LYCRA® elastomer
Abrasion: > 350.000 cicli, ISO 12947-2
Cleaning and care:



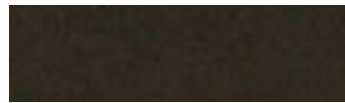
Scuba (Maharam) fabric



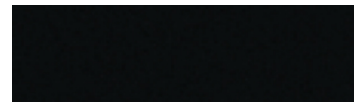
001



005



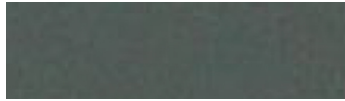
006



007



008



009



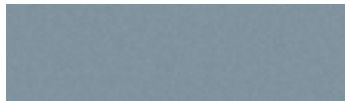
010



012



013



015



016



017



020



021



023

Composition: 100% polyurethane
(surface), 100% polyester (backing)
Abrasion: app. 100.000 Martindale
Cleaning and care:



FINISHES

Steelcut Trio 3 (Kvadrat) fabric



Design: Frans Dijkmeijer
and Giulio Ridolfo
Composition: 90% new wool,
worsted, 10% nylon
Abrasion: app. 100.000 Martindale
Cleaning and care:



FINISHES

Stipa fabric



03



05



02



04



31



46



150



16



06



07

Composition: VI 34% , CO 31% , LI 15% ,
PC 13% , PL 7%
Abrasion: app. 25.000 Martindale
Cleaning and care:



Vello fabric



01



03



05



07



29



28



2002



26



14



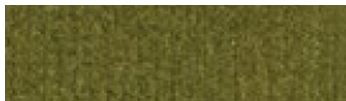
70



2007



58



1041

Composition: 100% Cotton
Abrasion: app. 70.000 Martindale
Cleaning and care:



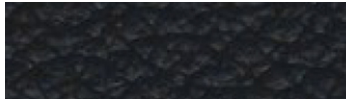
FINISHES

Elmosoft IX (Elmo) semi-aniline leather



FINISHES

Neocoast (Elmo) pigmented & printed leather



99076



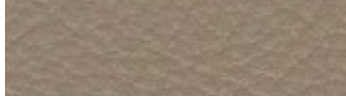
91097



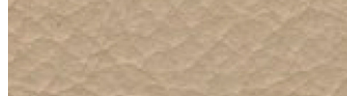
91100



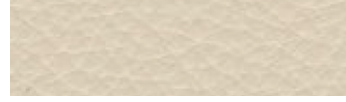
71010



18008



12097



02061



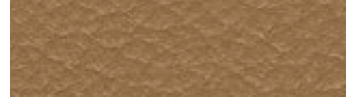
00114



93090



98016



43041



43084



95042



55058



45024



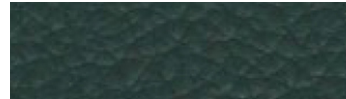
44015



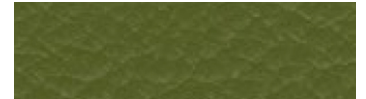
77022



77035



98043



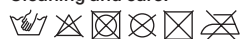
88017

FINISHES

Valencia (Spradling) synthetic leather



Composition: Topcoat 100% vinyl,
backing 100% polyester Hi-Loft
Abrasion: app. 300.000 Martindale
Cleaning and care:



Shades of colour cannot be
reproduced exactly on printed paper.
MD House Srl is entitled to make
modifications at any time and without
prior notice.

Nella stampa su carta la tonalità dei
colori non può essere riprodotta
fedelmente. MD House Srl si riserva
la facoltà di apportare modifiche in
qualsiasi momento e senza preavviso.

FINISHES

Wood (base)



Frassino tinto Rovere naturale



Frassino tinto Rovere nero



Frassino tinto Noce



Frassino tinto Eucalipto