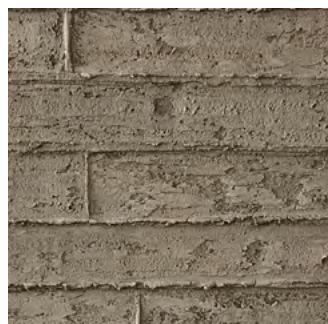


OLDSKOOL

OLDSKOOL



Oldskool clay

Oldskool clay is a handmade wall finish with a coarse plank pattern that gives an authentic poured concrete effect. Old-school gives the surface a lived and weathered look.

Appearance: Matt
 Material: Clay
 Thickness: 3-4 mm
 Usage: Only inside
 Wet area: Only indirectly



Oldskool lime

Oldskool lime is a handmade wall finish with a smooth plank pattern that gives an authentic poured concrete effect. Old-school gives the surface a lived and weathered look.

Appearance: Matt
 Material: Lime
 Thickness: 3-4 mm
 Usage: Only inside
 Wet area: Only indirectly



Oldskool lime



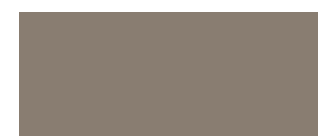
SENAPE



PEPE NERO



FANGO



SALE GRIGIO



CANELLA



POLVERE



PANNA



ZENZERO



GIANDUIA



CAFFE



MERINGA



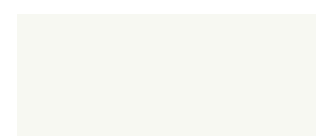
CACAO



MARZAPANE



VINACCIA



LATTE



MELOGRANO



CAMMEO



CIPRIA



Oldskool clay

Colours and materials as shown may vary from the original. No rights can be taken from this. For real colours, request samples. Some products may have more possible colours, ask us for all the possibilities.

