

**Square and rectangular table / Extensible version  
/ Slatted version / High table  
/ Occasional table / Bench**

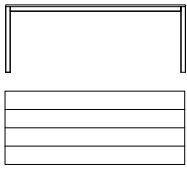
Le linee di be-Easy sono essenziali e rigorose. I tavoli indoor con piano Fenix-NTM, hanno un'estetica contemporanea e finiture vellutate al tatto. I tavoli, le panche e i tavolini outdoor possono avere il piano a doghe, in teak o alluminio, per una massima funzionalità.

The lines of be-Easy are essential and rigorous. The indoor tables with Fenix-NTM tops have a contemporary look and velvety-touch finishes. The outdoor tables, benches and occasional tables are available with a slatted, teak or aluminium top for maximum functionality.

Die Linien von be-Easy sind essenziell und streng. Die Tische für den Indoor-Bereich mit Platte aus Fenix-NTM besitzen eine zeitgenössische Ästhetik und eine samtig weiche Oberflächenausführung. Die Tische, Bänke und Beistelltische für den Outdoor-Bereich haben ein Platte aus Teakholz- oder Aluminiumleisten für höchsten praktischen Nutzen.

Les lignes de be-Easy sont épurées et sobres. Les tables pour intérieur avec plateau en Fenix-NTM ont une esthétique contemporaine et des finitions veloutées au toucher. Les tables, les bancs et les tables basses pour l'extérieur peuvent avoir un plateau à lattes, en teak ou en aluminium, pour une fonctionnalité maximale.

Dimensions



**Table (Slatted version)**  
L 80 P 79 H 76 cm  
W 31<sup>1</sup>/<sub>8</sub>" D 31<sup>1</sup>/<sub>8</sub>" H 29<sup>7</sup>/<sub>8</sub>"

L 160 P 79 H 76 cm  
W 63" D 31<sup>1</sup>/<sub>8</sub>" H 29<sup>7</sup>/<sub>8</sub>"

L 180 P 79 H 76 cm  
W 70<sup>7</sup>/<sub>8</sub>" D 31<sup>1</sup>/<sub>8</sub>" H 29<sup>7</sup>/<sub>8</sub>"

L 200 P 79 H 76 cm  
W 78<sup>5</sup>/<sub>8</sub>" D 31<sup>1</sup>/<sub>8</sub>" H 29<sup>7</sup>/<sub>8</sub>"

L 220 P 79 H 76 cm  
W 86<sup>5</sup>/<sub>8</sub>" D 31<sup>1</sup>/<sub>8</sub>" H 29<sup>7</sup>/<sub>8</sub>"

L 100 P 99 H 76 cm  
W 39<sup>3</sup>/<sub>8</sub>" D 39" H 29<sup>7</sup>/<sub>8</sub>"

L 160 P 99 H 76 cm  
W 63" D 39" H 29<sup>7</sup>/<sub>8</sub>"

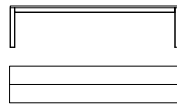
L 180 P 99 H 76 cm  
W 70<sup>7</sup>/<sub>8</sub>" D 39" H 29<sup>7</sup>/<sub>8</sub>"

L 200 P 99 H 76 cm  
W 78<sup>5</sup>/<sub>8</sub>" D 39" H 29<sup>7</sup>/<sub>8</sub>"



L 220 P 99 H 76 cm  
W 86<sup>5</sup>/<sub>8</sub>" D 39" H 29<sup>7</sup>/<sub>8</sub>"

L 140 P 139 H 76 cm  
W 55<sup>1</sup>/<sub>8</sub>" D 54<sup>6</sup>/<sub>8</sub>" H 29<sup>7</sup>/<sub>8</sub>"



**Bench (Slatted version)**  
L 140 P 40 H 45 cm  
W 55<sup>1</sup>/<sub>8</sub>" D 15<sup>5</sup>/<sub>8</sub>" H 17<sup>5</sup>/<sub>8</sub>"

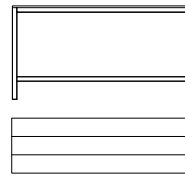
L 160 P 40 H 45 cm  
W 63" D 15<sup>5</sup>/<sub>8</sub>" H 17<sup>5</sup>/<sub>8</sub>"

L 180 P 40 H 45 cm  
W 70<sup>7</sup>/<sub>8</sub>" D 15<sup>5</sup>/<sub>8</sub>" H 17<sup>5</sup>/<sub>8</sub>"

L 200 P 40 H 45 cm  
W 78<sup>5</sup>/<sub>8</sub>" D 15<sup>5</sup>/<sub>8</sub>" H 17<sup>5</sup>/<sub>8</sub>"



**Lips-R**  
Removable cushion



**Bar table (Slatted version)**  
L 160 P 59 H 105 cm  
W 63" D 23<sup>2</sup>/<sub>8</sub>" H 41<sup>3</sup>/<sub>8</sub>"

L 180 P 59 H 105 cm  
W 70<sup>7</sup>/<sub>8</sub>" D 23<sup>2</sup>/<sub>8</sub>" H 41<sup>3</sup>/<sub>8</sub>"

L 200 P 59 H 105 cm  
W 78<sup>5</sup>/<sub>8</sub>" D 23<sup>2</sup>/<sub>8</sub>" H 41<sup>3</sup>/<sub>8</sub>"

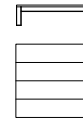
L 220 P 59 H 105 cm  
W 86<sup>5</sup>/<sub>8</sub>" D 23<sup>2</sup>/<sub>8</sub>" H 41<sup>3</sup>/<sub>8</sub>"

L 160 P 79 H 105 cm  
W 63" D 31<sup>1</sup>/<sub>8</sub>" H 41<sup>3</sup>/<sub>8</sub>"

L 180 P 79 H 105 cm  
W 70<sup>7</sup>/<sub>8</sub>" D 31<sup>1</sup>/<sub>8</sub>" H 41<sup>3</sup>/<sub>8</sub>"

L 200 P 79 H 105 cm  
W 78<sup>5</sup>/<sub>8</sub>" D 31<sup>1</sup>/<sub>8</sub>" H 41<sup>3</sup>/<sub>8</sub>"

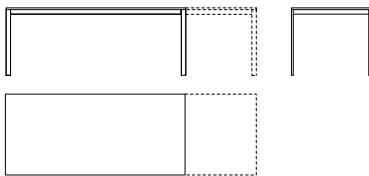
L 220 P 79 H 105 cm  
W 86<sup>5</sup>/<sub>8</sub>" D 31<sup>1</sup>/<sub>8</sub>" H 41<sup>3</sup>/<sub>8</sub>"



**Low table (Slatted version)**  
L 80 P 79 H 20/35 cm  
W 31<sup>1</sup>/<sub>8</sub>" D 31<sup>1</sup>/<sub>8</sub>" H 7<sup>7</sup>/<sub>8</sub>/13<sup>5</sup>/<sub>8</sub>"

L 100 P 99 H 20/35 cm  
W 39<sup>3</sup>/<sub>8</sub>" D 39" H 7<sup>7</sup>/<sub>8</sub>/13<sup>5</sup>/<sub>8</sub>"

**Depth = # slats**  
40 cm (15<sup>5</sup>/<sub>8</sub>" ) = 2 slats  
59 cm (23<sup>2</sup>/<sub>8</sub>" ) = 3 slats  
79 cm (31<sup>1</sup>/<sub>8</sub>" ) = 4 slats  
99 cm (39" ) = 5 slats  
139 cm (54<sup>6</sup>/<sub>8</sub>" ) = 7 slats



**Fixed and extendable table**  
L 123/203 P 79 H 75 cm  
W 48<sup>3</sup>/<sub>8</sub>/79" D 31<sup>1</sup>/<sub>8</sub>" H 29<sup>4</sup>/<sub>8</sub>"

L 150/230 P 79 H 75 cm  
W 59/90<sup>4</sup>/<sub>8</sub>" D 31<sup>1</sup>/<sub>8</sub>" H 29<sup>4</sup>/<sub>8</sub>"

L 150/230 P 89 H 75 cm  
W 59/90<sup>4</sup>/<sub>8</sub>" D 35" H 29<sup>4</sup>/<sub>8</sub>"

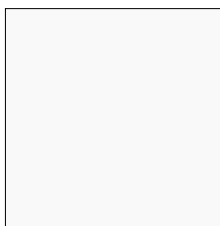
L 170/250 P 89 H 75 cm  
W 66<sup>7</sup>/<sub>8</sub>/98<sup>3</sup>/<sub>8</sub>" D 35" H 29<sup>4</sup>/<sub>8</sub>"

L 200/280 P 99 H 75 cm  
W 78<sup>5</sup>/<sub>8</sub>/110<sup>2</sup>/<sub>8</sub>" D 39" H 29<sup>4</sup>/<sub>8</sub>"

Accessories

- Cable ducting hole
- Cabling network
- Casper protective cover

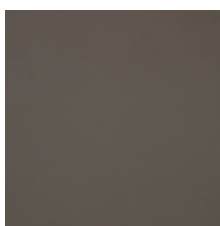
Steel legs (indoor)



White metal



Ottawa beaver metal

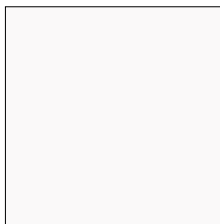


London grey metal

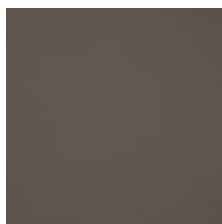


Black metal

Steel legs Slatted version (indoor/outdoor)



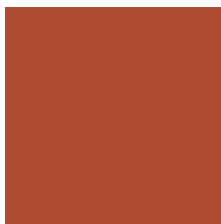
White metal



London grey metal



Black metal

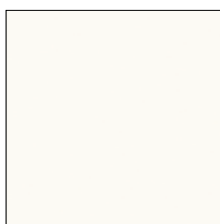


Terracotta brown metal



Olive green metal

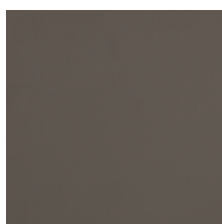
Fenix-NTM® top (indoor)



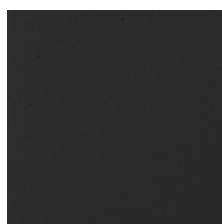
Kos white 0032



Ottawa beaver 0717

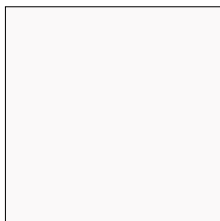


London grey 0718

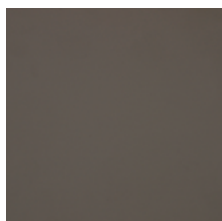


Ingo black 0720

Aluminium top Slatted version (indoor/outdoor)



White metal



London grey metal



Black metal

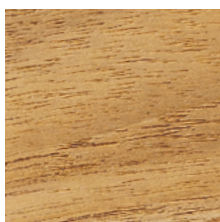


Terracotta brown metal



Olive green metal

Teak top Slatted version (indoor/outdoor)



Teak

More finishes and coverings info:

[Materials & Finishes](#)