



Legri

Like a soft horizontal line highlighted by the wall, in the middle of the room the Legri bed appears to hover in the air, evoking a feeling of suspension and lightness. This is achieved with the feet, which are recessed in relation to the bedframe, ensuring stability without being noticed. With a padded back panel, the bedframe has soft, rounded lines for maximum comfort. Night stands, also suspended and curved, can be combined with the bed.

DESIGN Lievore + Altherr Désile Park

Come una linea orizzontale tracciata dalla parete al centro della stanza, il letto Legri sembra librarsi in aria, trasmettendo una sensazione di sospensione e leggerezza. Merito dei piedini rientranti rispetto alla struttura, che assicurano stabilità senza farsi notare. La struttura con schienale imbottito ha linee morbide e rotonde, per la massima sensazione di comfort. Sospesi e curvi anche i comodini, che si possono integrare al letto.

Lievore + Altherr Désile Park



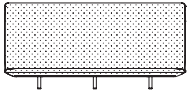
An offshoot of the long-standing Lievore Altherr studio in Barcelona, Lievore + Altherr Désile Park is the result of the merger of two studios specialised in product design and development, strategic consulting, creative direction, art direction and ephemeral architecture for leading international design companies.

Evoluzione dello storico studio Lievore Altherr di Barcellona, Lievore + Altherr Désile Park nasce dall'unione di due studi specializzati in design e sviluppo di prodotti, consulenza strategica, direzione creativa, direzione artistica e architettura effimera per le maggiori aziende di design a livello internazionale.

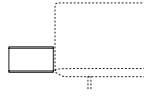
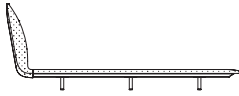
Sizes

Type

H 86 cm
H 33⁷/₈"

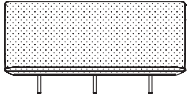


On low feet

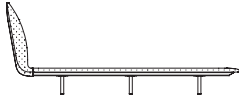


Night stand rh/h
L 47 P 47 H 27 cm
W 18⁴/₈" D 18⁴/₈" H 10⁵/₈"

H 98 cm
H 38⁵/₈"



On high feet



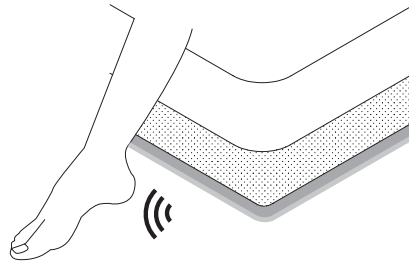
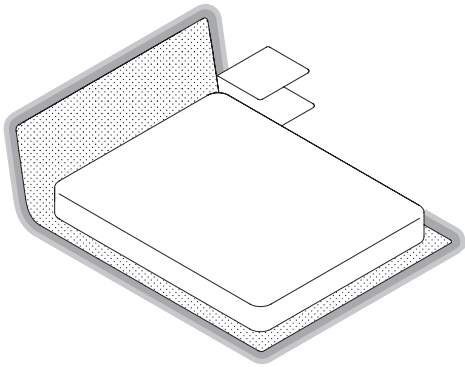
For mattresses

L 150 P 200 cm L 160 P 200 cm L 190 P 200 cm
W 59" D 78⁶/₈" W 63" D 78⁶/₈" W 74⁶/₈" D 78⁶/₈"

L 153 P 203 cm L 180 P 200 cm L 193 P 203 cm
W 60²/₈" D 79⁷/₈" W 70⁷/₈" D 78⁶/₈" W 76" D 79⁷/₈"

L 160 P 190 cm L 183 P 203 cm
W 63" D 74⁶/₈" W 74⁶/₈" D 79⁷/₈"

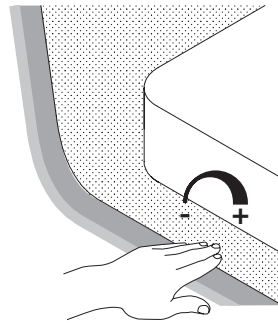
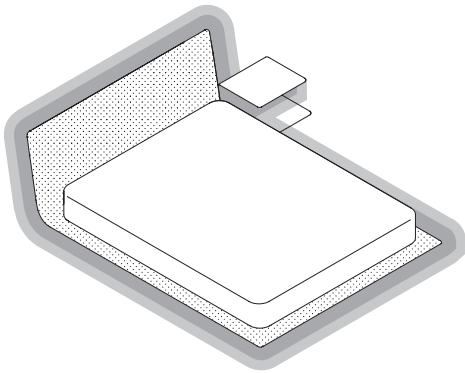
Courtesy light



The courtesy light (3000 k) is activated automatically by means of a movement proximity sensor. Ignition is provided with direct and non-direct connection dimerable.

La luce di cortesia (3000 k) si aziona automaticamente mediante un sensore di prossimità a movimento. L'accensione è prevista con presa diretta e non dimerabile.

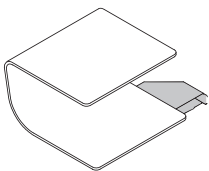
Emotional light



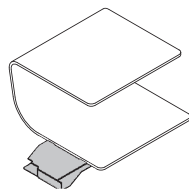
The dimmable emotional light (3000 k) is activated with an integrated capacitive switch hidden in the padding of both sides. The emotional light of the bed can also be integrated into the bedside tables.

La luce emozionale dimerabile (3000 k) si aziona con un interruttore capacitivo integrato e nascosto nell'imbottitura di entrambi i longoni. La luce emozionale del letto può essere integrata anche nei comodini.

Suspended bedside tables



Left

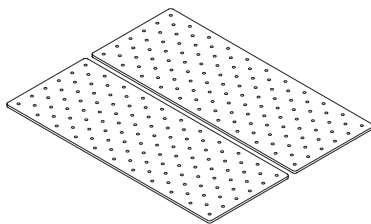


Right

The bedside table, made of shaped plywood, is fixed to the bed by means of a special metal bracket. On request it can be integrated on the top lower both the induction charger for the smartphone and the USB socket access. The presence of the optional light depends on the presence of the lightemotional effect of the bed, both provided with a single ignition. The bedside tables can also be ordered after the purchase of the bed.

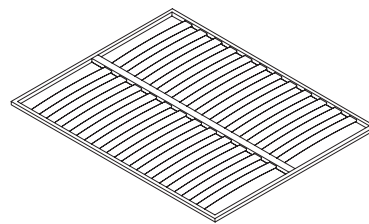
Il comodino, realizzato in multistrato sagomato, prevede il fissaggio al letto mediante una apposita staffa metallica. Su richiesta si può integrare sul piano inferiore sia il caricabatterie a induzione per lo smartphone sia l'accesso presa USB. La presenza della luce opzionale subordinata alla presenza della luce emozionale del letto, entrambe previste con una unica accensione. I comodini possono essere ordinati anche successivamente all'acquisto del letto.

Bed base



Multilayer thk. 1.8 cm – $\frac{9}{8}$ " with breathable holes resting on crossbeams.

Multistrato sp. 1,8 cm – $\frac{9}{8}$ " con fori traspiranti in appoggio su traversi.



Metal frame h. 4 cm – $\frac{15}{8}$ " painted gray with 90° corners, layered plywood slats on transoms.

Telaio in metallo h. 4 cm – $\frac{15}{8}$ " verniciato grigio con angoli 90°, doghe in multistrato in appoggio su traversi.

FINISHES

Alveo fabric



111



130



200



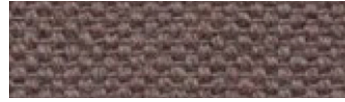
430



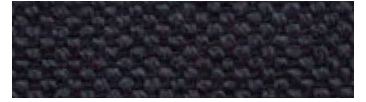
600



602



603



632



705



802



901



902

Composition: 100% recycled cotton
Abrasion: app. 25.000 Martindale
Cleaning and care:



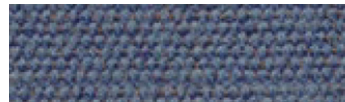
Biacco fabric



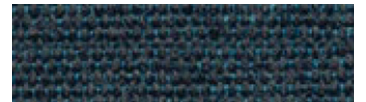
53



14



06



13



11



15

Composition: 75% recycled CO, 25% PL
Abrasion: app. 40.000 Martindale
Cleaning and care:



Borgo fabric



15



17



37



92



98



93



25



76



137

Composition: PC 51% , LI 11%, PL 11%,
VI 11%, CO 16%
Abrasion: app. 25.000 Martindale
Cleaning and care:



FINISHES

Divina Melange 3 (Kvadrat) fabric



Design: Finn Sködt
 Composition: 100% new wool
 Abrasion: app. 45.000 Martindale
 Cleaning and care:



FINISHES

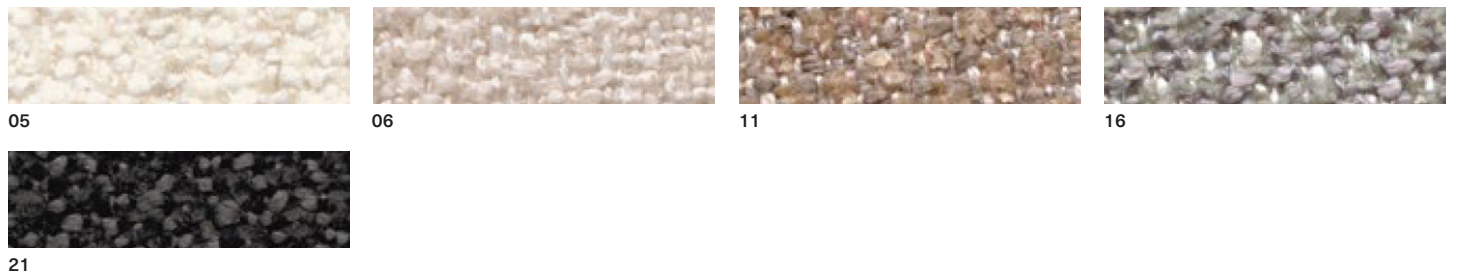
Field 2 (Kvadrat) fabric



Design: Alfredo Häberli
 Composition: 100% Trevira CS
 Abrasion: app. 100.000 Martindale

Cleaning and care:

Greto fabric




Composition: PL 33% , PC 25%,
 VI 23%, CO 10%, LI 9%
 Abrasion: app. 50.000 Martindale

Cleaning and care:

FINISHES

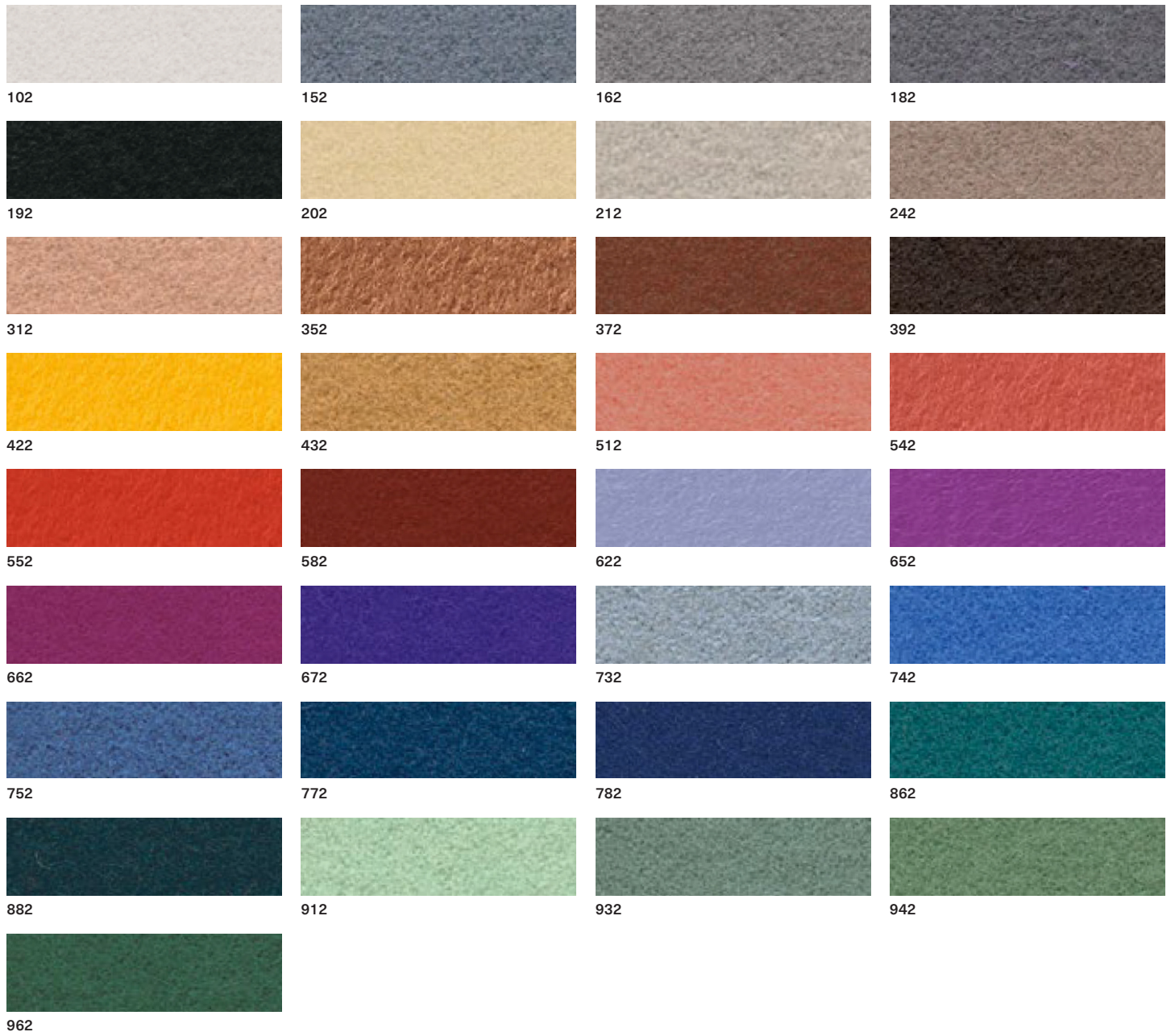
Hallingdal 65 (Kvadrat) fabric



Design: Nanna Ditzel
 Composition: 70% new wool,
 30% viscose
 Abrasion: app. 100.000 Martindale
 Cleaning and care:


FINISHES

Hero 2 (Kvadrat) fabric



Composition: 96% new wool, 4% nylon
 Abrasion: app. 45.000 Martindale
 Cleaning and care:



Merit (Maharam) fabric



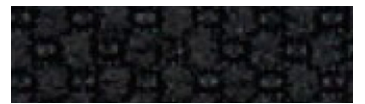
001



002



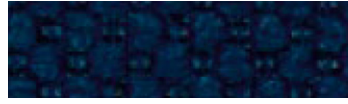
003



004



005



006



007



008



009



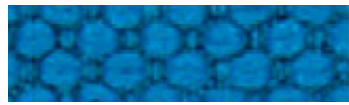
010



011



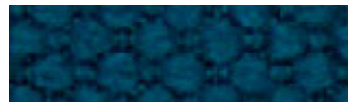
012



013



014



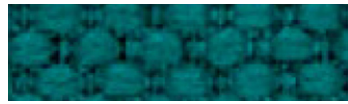
015



016



017



018



019



020



021



022



023



024



025



026



027



028



029



030



031



032



033



034



035



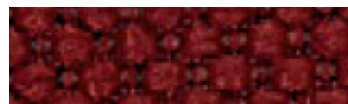
036



037



038



039



040



041



042



043

Composition: 76% post-consumer recycled polyester, 24% polyester
 Abrasion: app. 85.000 Martindale
 Cleaning and care:



FINISHES

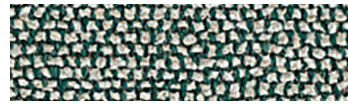
Moss (Sahco) fabric



0001



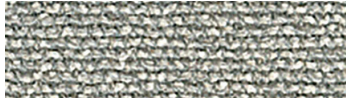
0002



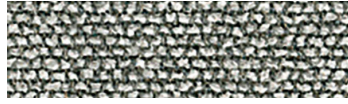
0003



0004



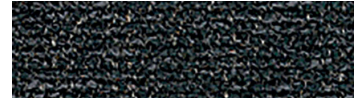
0005



0006



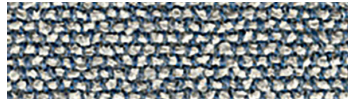
0007



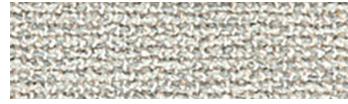
0008



0009



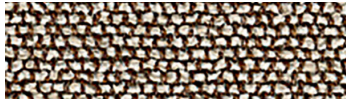
0010



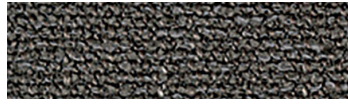
0011



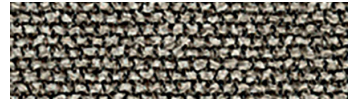
0012



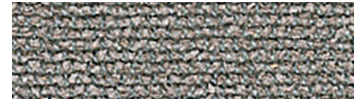
0013



0014



0015



0016



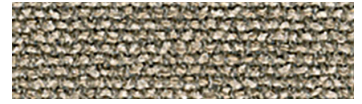
0017



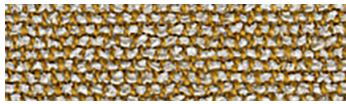
0018



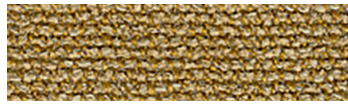
0019



0020



0021



0022

Design: Vincent Van Duysen
Composition: 52% Cotton,
22% Viscose, 14% Acrylic,
6% Linen, 3% Polyester, 3% Nylon
Weight: 920 g/lin.m
Durability: 50.000 Martindale

Pilling: 4-5
Lightfastness: 6-7
Cleaning and care:
⊗ ⊗ ⊗ ⊗ ⊗

Orsetto (ONE Mario Sirtori) fabric



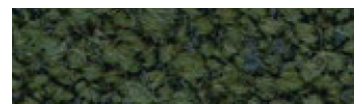
01/2



98/21



02/26



98/18



98/20



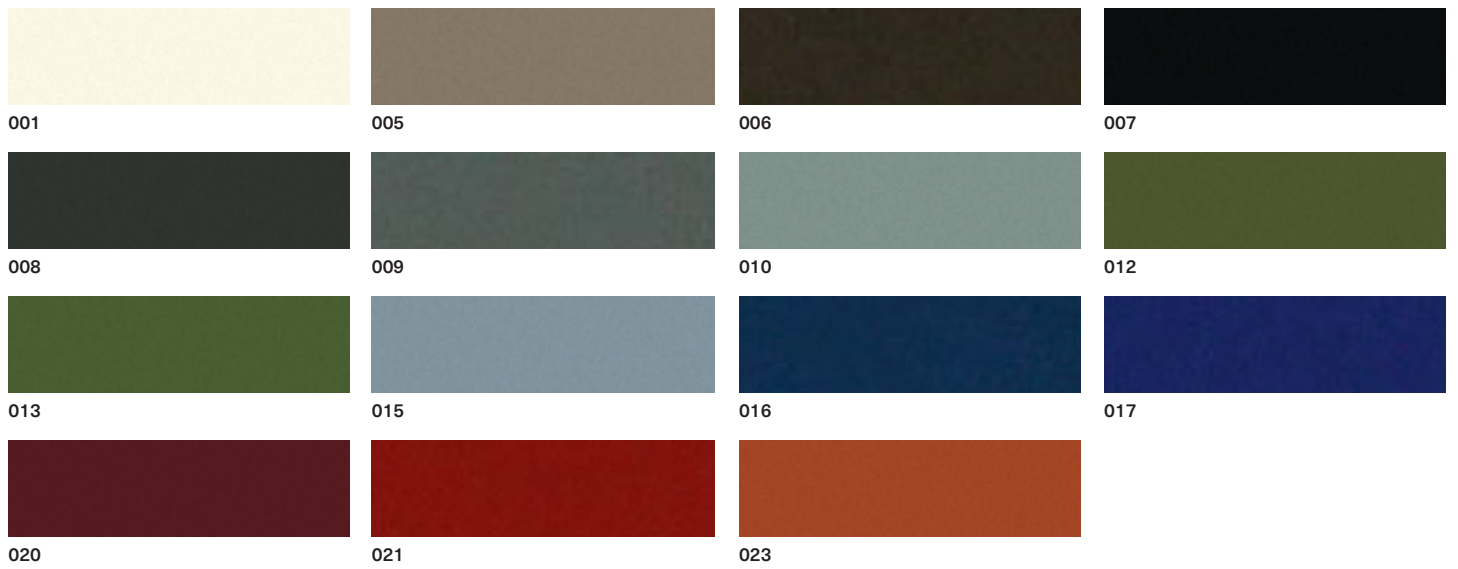
98/16

Composition: 34% Viscose, 33%
Acrylic, 17% Wool, 8% Polyester, 4%
Flax, 4% Cotton
Abrasion: app. 80.000 Martindale
Cleaning and care:

⊗ ⊗ ⊗ ⊗ ⊗

FINISHES

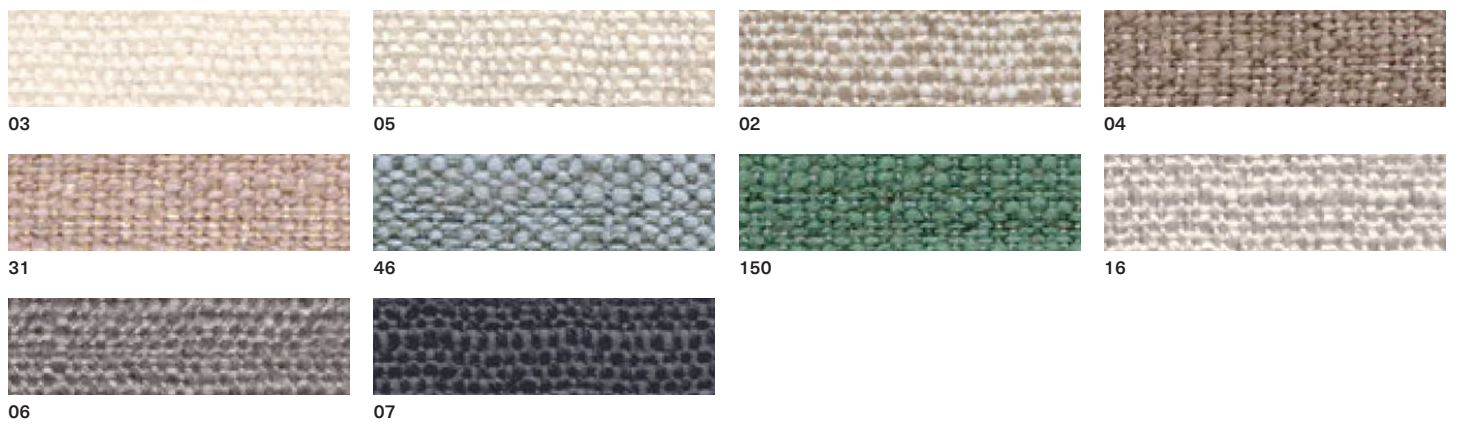
Scuba (Maharam) fabric



Composition: 100% polyurethane (surface), 100% polyester (backing)
 Abrasion: app. 100.000 Martindale
 Cleaning and care:



Stipa fabric



Composition: VI 34% , CO 31%, LI 15%,
 PC 13%, PL 7%
 Abrasion: app. 25.000 Martindale
 Cleaning and care:



Steelcut Trio 3 (Kvadrat) fabric



Design: Frans Dijkmeijer
and Giulio Ridolfo
Composition: 90% new wool,
worsted, 10% nylon
Abrasion: app. 100.000 Martindale
Cleaning and care:



FINISHES

Vello fabric



01



03



05



07



29



28



2002



26



14



70



2007



58



1041

Composition: 100% Cotton
Abrasion: app. 70.000 Martindale
Cleaning and care:



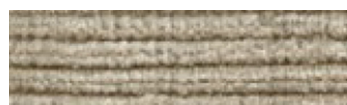
Verso fabric



01



03



51



05



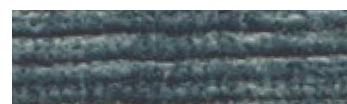
09



30



10



15

Composition: VI 34% , CO 31% , LI 15% ,
PC 13% , PL 7%
Abrasion: app. 25.000 Martindale
Cleaning and care:



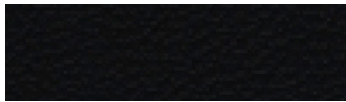
FINISHES

Elmosoft IX (Elmo) semi-aniline leather



FINISHES

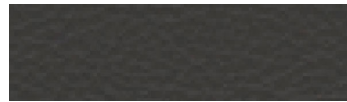
Neocoast leather (Elmo)



99076



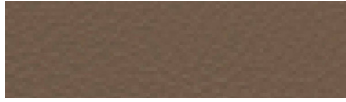
91097



91100



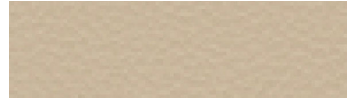
71010



18008



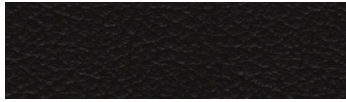
12097



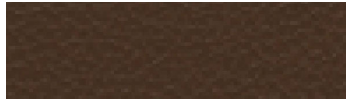
02061



00114



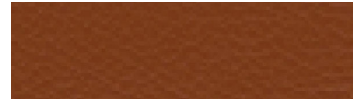
93090



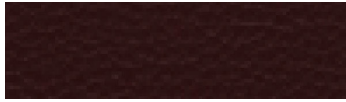
98016



43041



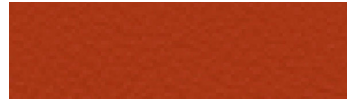
43084



95042



55058



45024



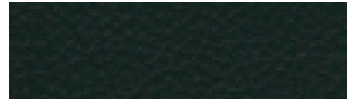
44015



77022



77035



98043



88017

FINISHES

Valencia synthetic leather (Spradling)



Composition: Topcoat 100% vinyl,
backing 100% polyester Hi-Loft
Abrasion: app. 300.000 Martindale
Cleaning and care:



Shades of colour cannot be reproduced exactly on printed paper. MD House Srl is entitled to make modifications at any time and without prior notice.

Nella stampa su carta la tonalità dei colori non può essere riprodotta fedelmente. MD House Srl si riserva la facoltà di apportare modifiche in qualsiasi momento e senza preavviso.