

RVH8630

UNDERMOUNT WORKSTATION SINK

RUVATI[®]
SPECIFICATION SHEET

MATERIAL

- True 16 Gauge Thickness
- Premium T304 Grade Stainless Steel
- Nano-PVD colored finish: easy to clean, and long lasting

FEATURES

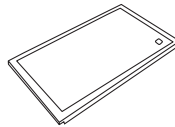
- Heavy duty sound guard padding and undercoating
- Embossed stainless steel with a hexagonal pattern and matte finish
- Single-Tier Ledge for Accessories



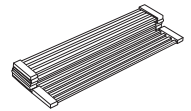
IN THE BOX



Basket Strainer
[RVA1025]



Cutting Board
[RVA1217BWC]



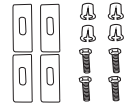
Folding Rack
[RVA1397]



Cut-out
Template



Drain Cover
[RVA1035]



Mounting Clips
[RVA11031]

NOMINAL DIMENSIONS

Exterior: 30" (wide) x 19" (front-to-back)
Interior Bowl: 28-3/8" (wide) x 16" (front-to-back)
Bowl Depth: 10"
Minimum Cabinet Size: 33" wide
Drain Hole Size: 3 1/2"

Installation Type:
Undermount

Inside Corners:
Rounded

Drain Location:
Rear Center

RUVATI USA

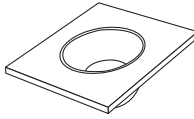
www.ruvati.com

Phone: 1.855.478.8284
Email: support@ruvati.com

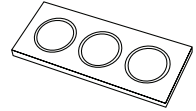
OPTIONAL ACCESSORIES (SOLD SEPARATELY)



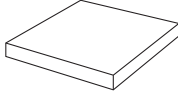
Deep Basket
Disposal Flange
[RVA1049ST]



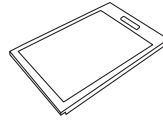
Mixing Bowl
and Platform
[RVA1288]



Condiment
Serving Tray
[RVA1377]

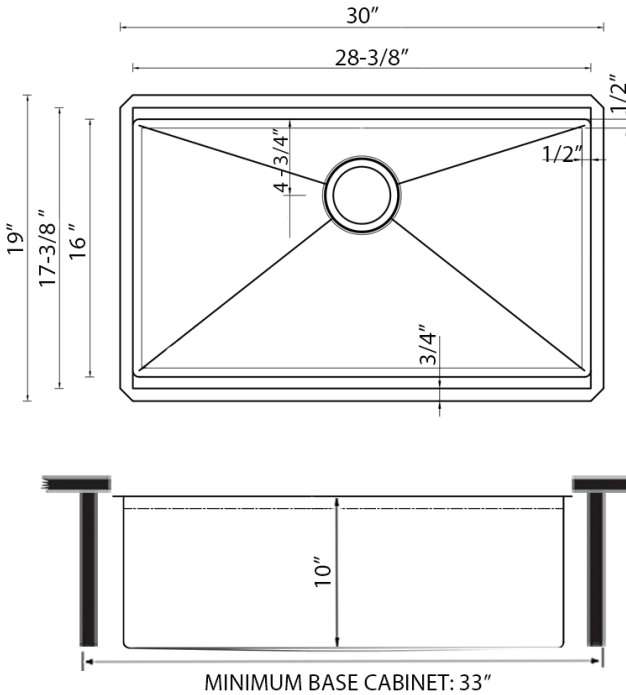


Butcher Block
[RVA2445ACA]



Black Plastic
Cutting Board
[RVA1217BLK]

DIMENSIONS



Register your product at www.ruvati.com/register.