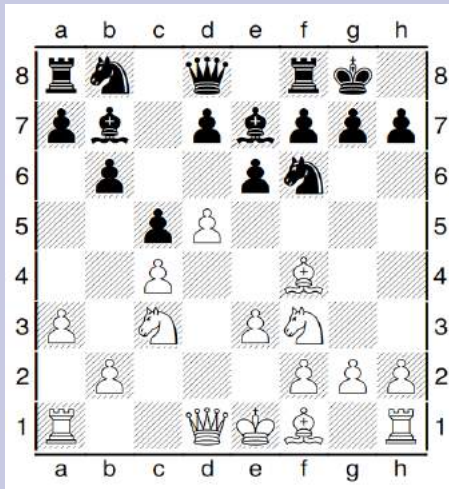


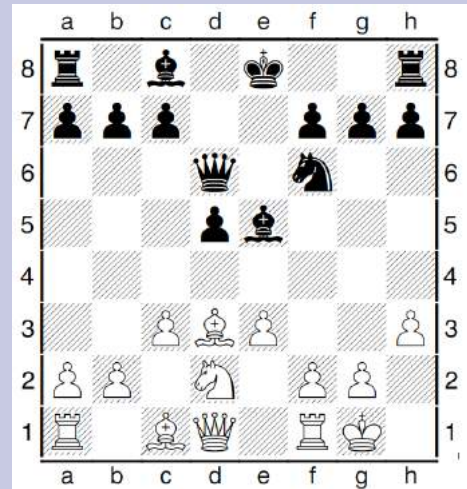
# Chess Tactics



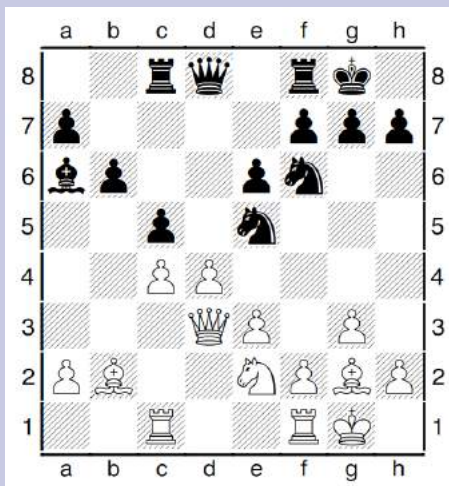
DELANCEY  
UK SCHOOLS  
CHESS CHALLENGE



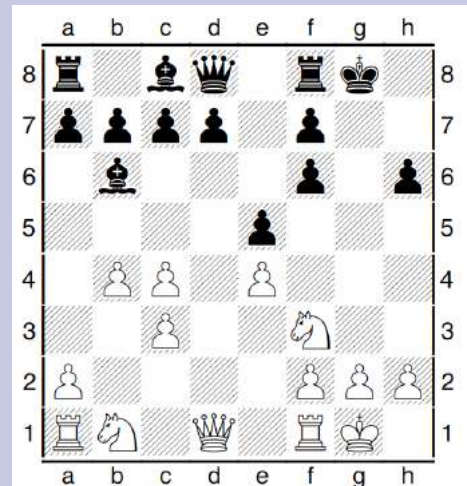
Q1. How can White trap a bishop?



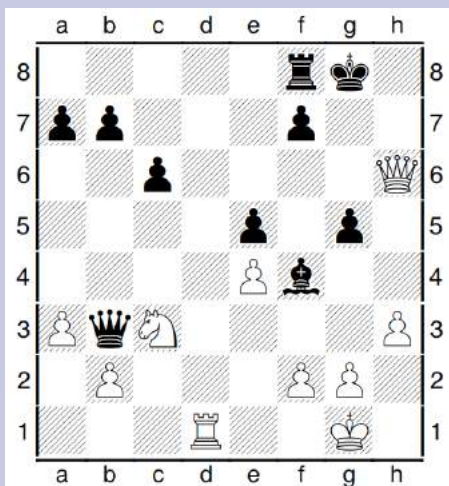
Q2. How can White trap a bishop?



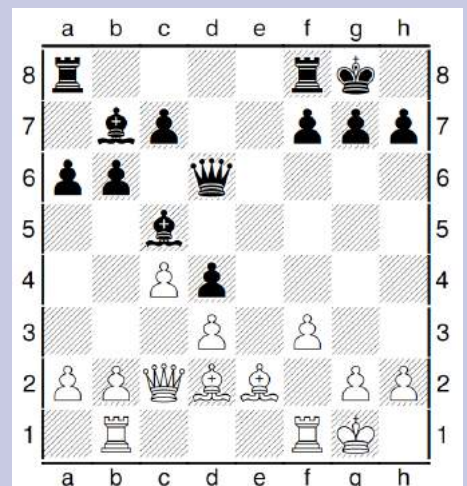
Q3. How can White trap a bishop?



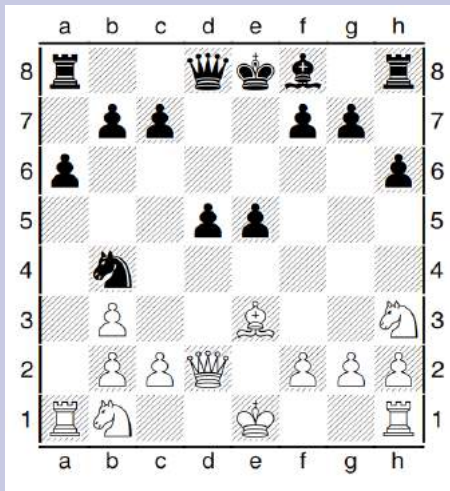
Q4. How can White trap a bishop?



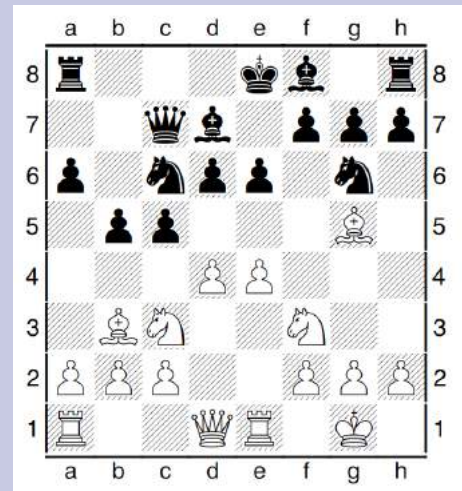
Q5. How can White trap a bishop?



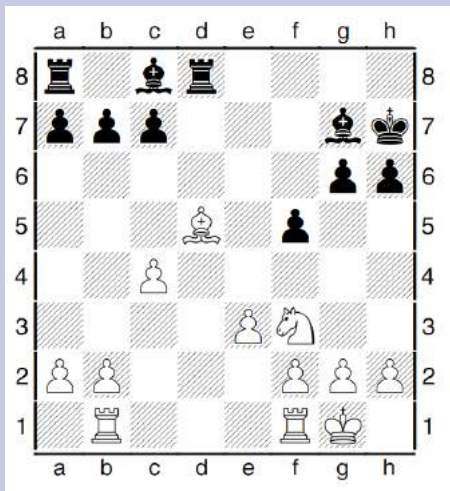
Q6. How can White trap a bishop?



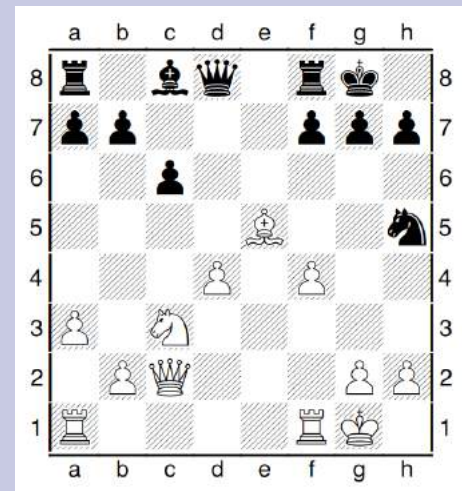
Q7. How can Black trap a bishop?



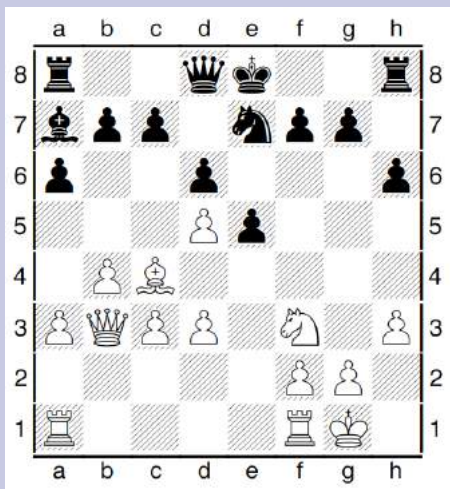
Q8. How can Black trap a bishop?



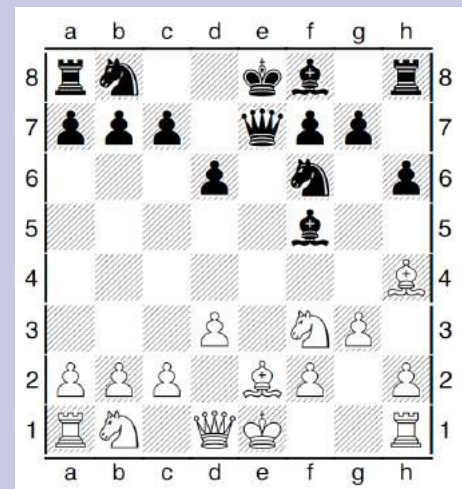
Q9. How can Black trap a bishop?



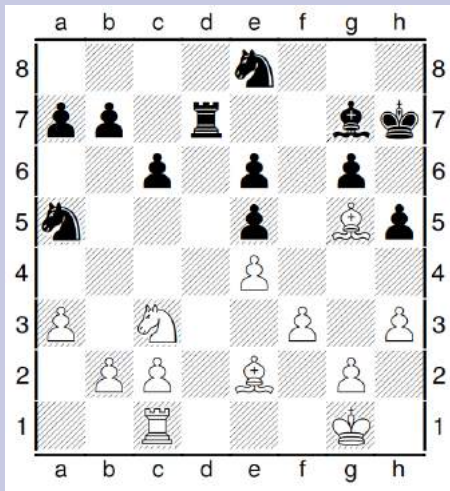
Q10. How can Black trap a bishop?



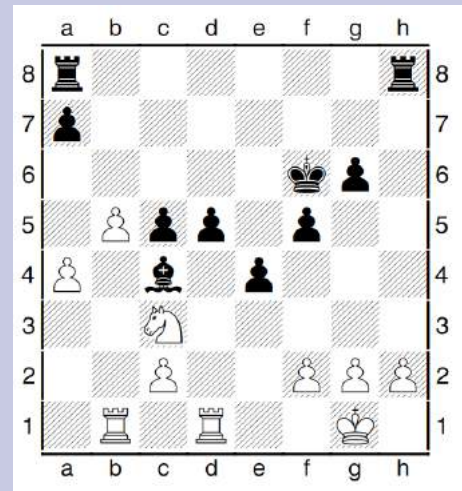
Q11. How can Black trap a bishop?



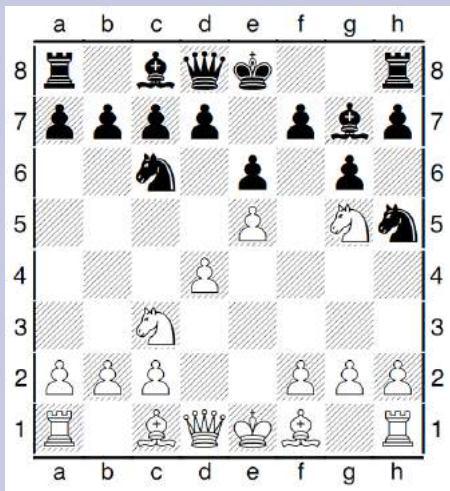
Q12. How can Black trap a bishop?



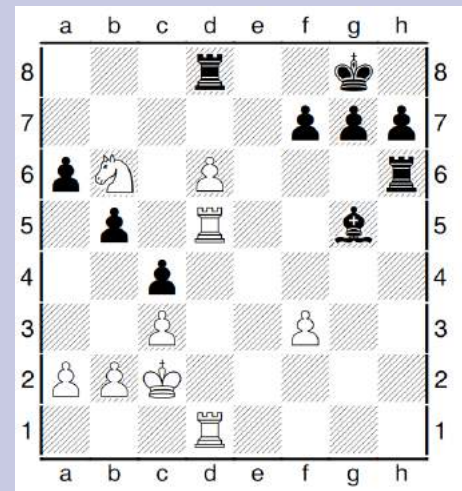
Q13. How can White trap a knight?



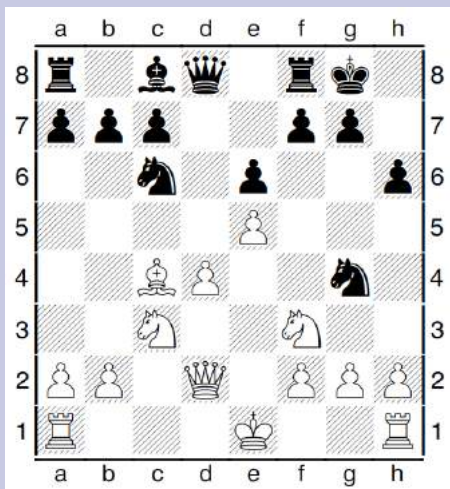
Q14. How can Black trap a knight?



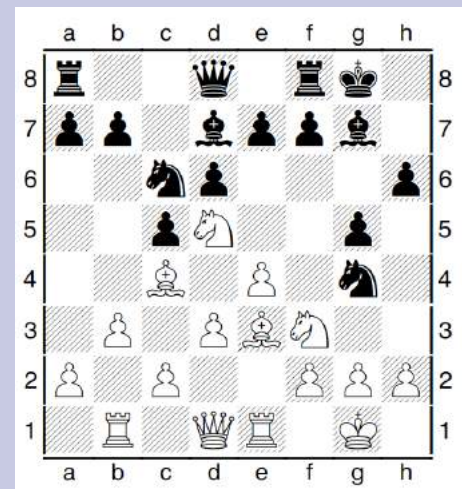
Q15. How can White trap a knight?



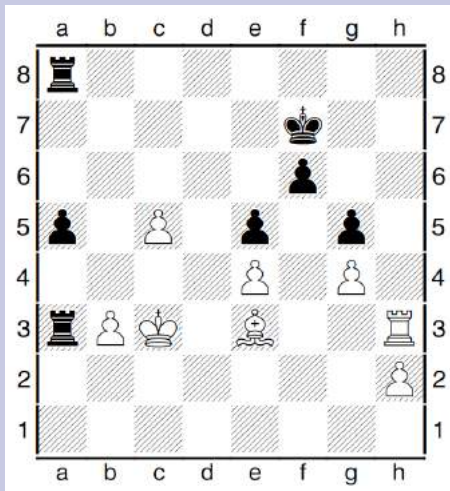
Q16. How can Black trap a knight?



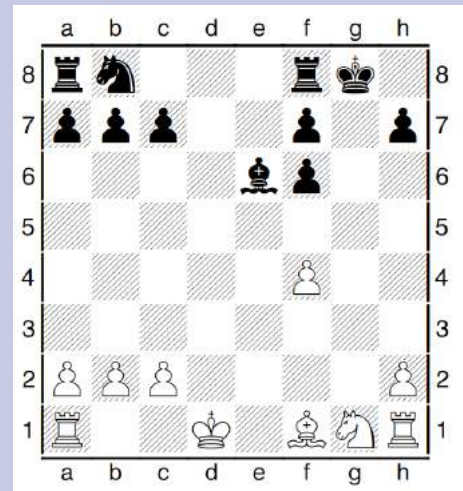
Q17. How can White trap a knight?



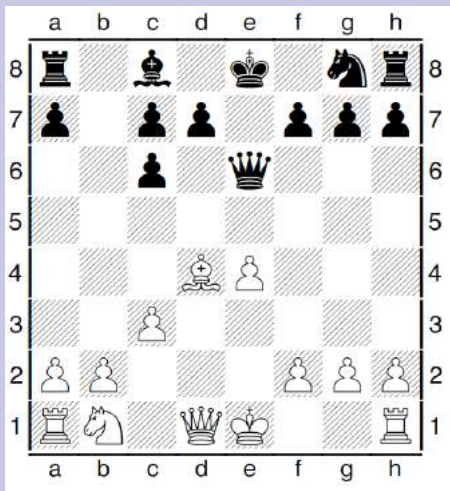
Q18. How can Black trap a knight?



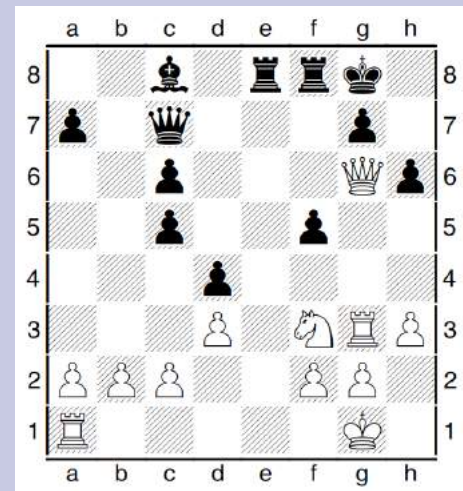
Q19. How can White trap a rook?



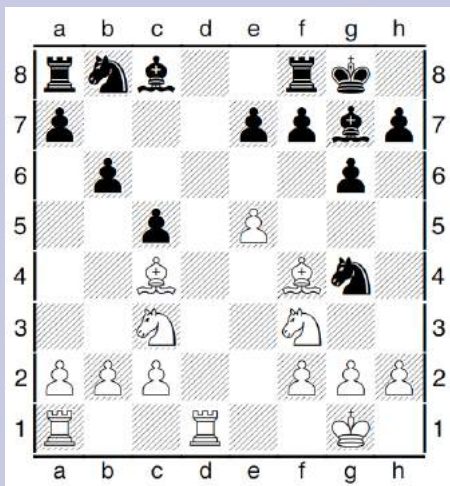
Q20. How can Black trap a rook?



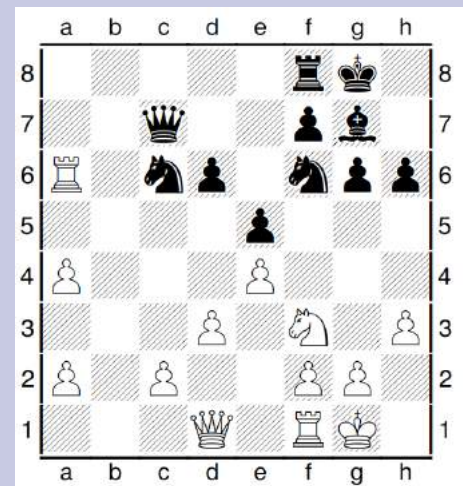
Q21. How can White trap a rook?



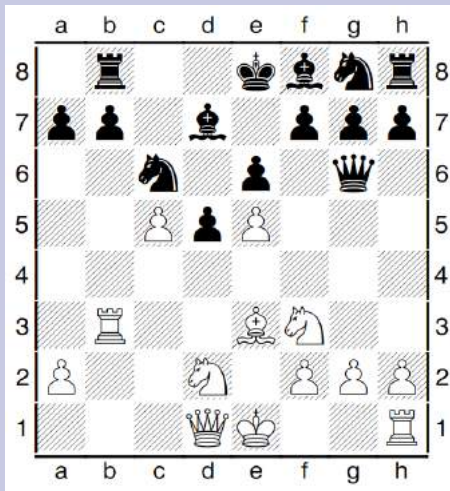
Q22. How can Black trap a rook?



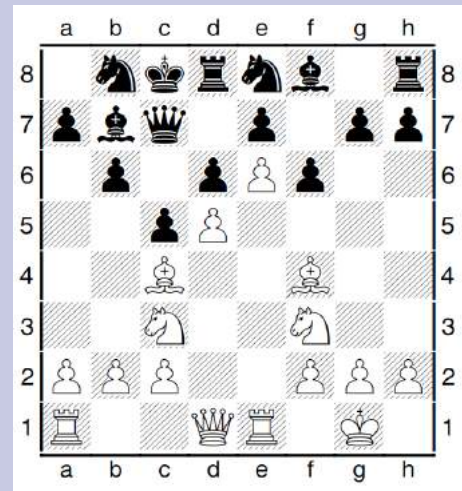
Q23. How can White trap a rook?



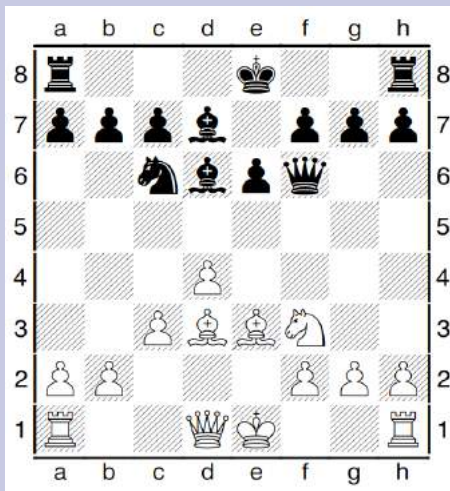
Q24. How can Black trap a rook?



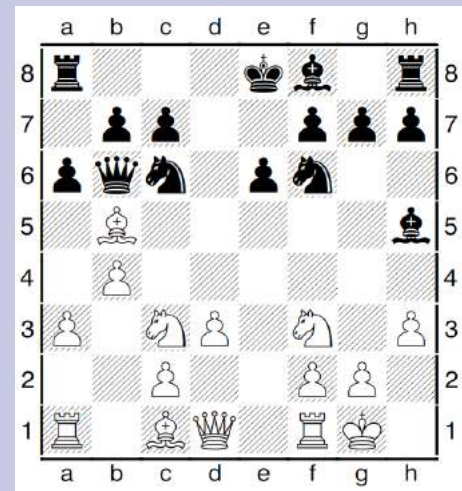
Q25. How can White trap a queen?



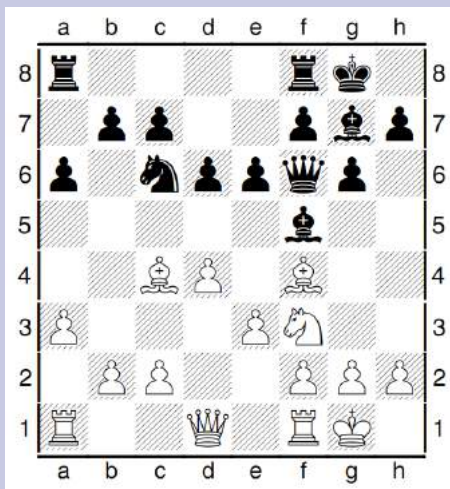
Q26. How can White trap a queen?



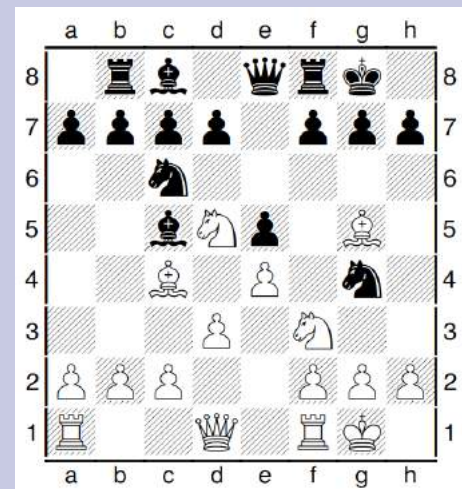
Q27. How can White trap a queen?



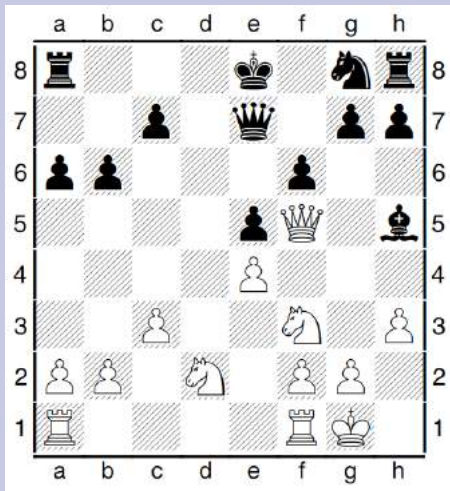
Q28. How can White trap a queen?



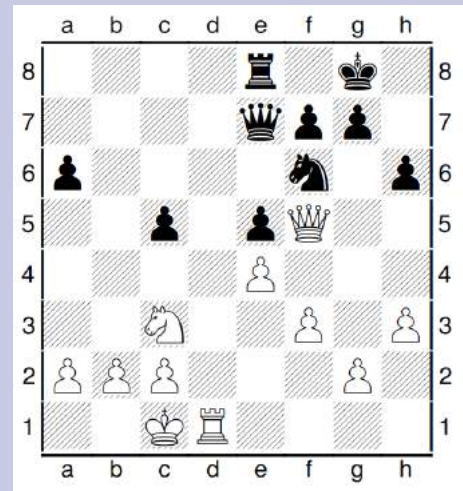
Q29. How can White trap a queen?



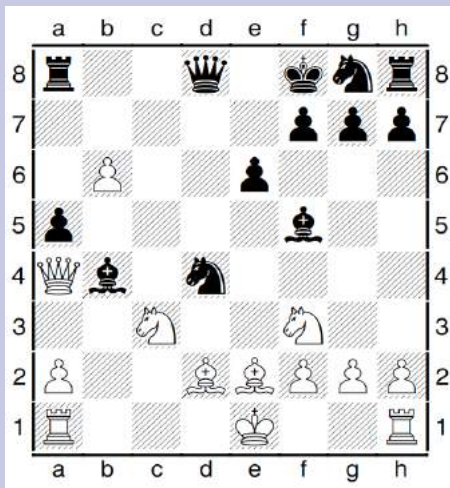
Q30. How can White trap a queen?



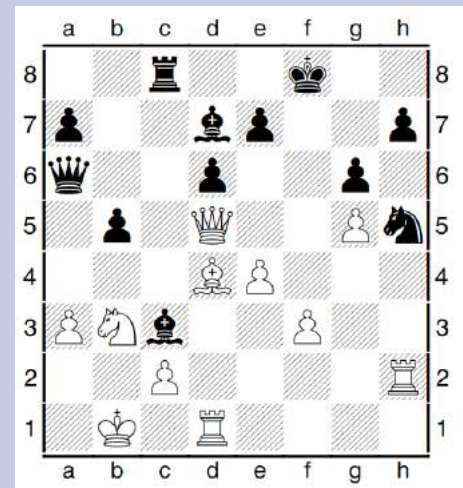
Q31. How can Black trap a queen?



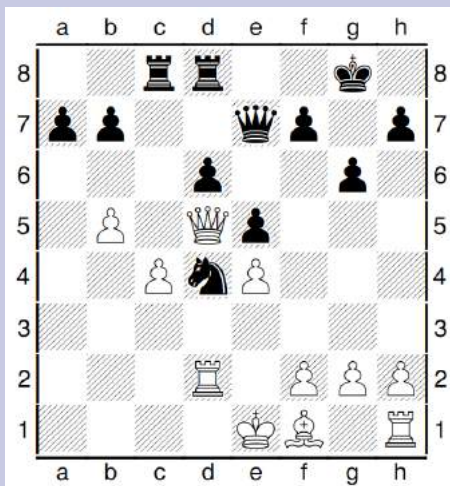
Q32. How can Black trap a queen?



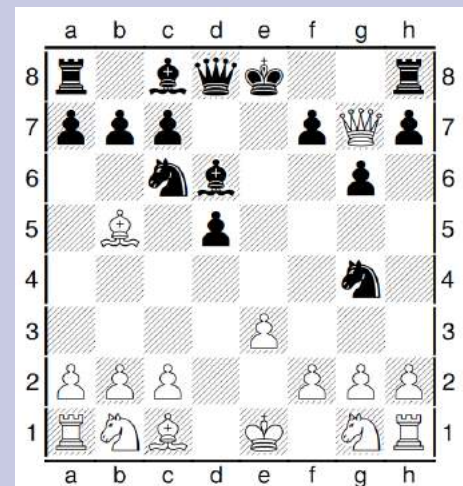
Q33. How can Black trap a queen?



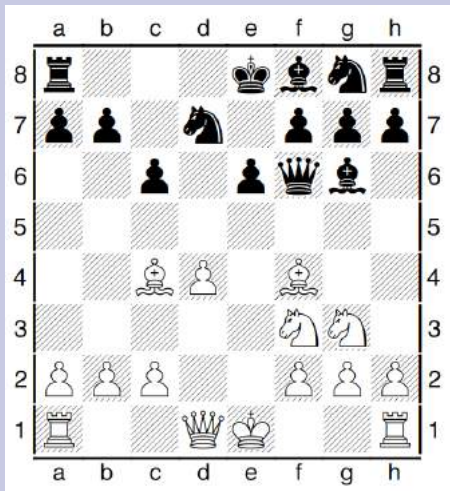
Q34. How can Black trap a queen?



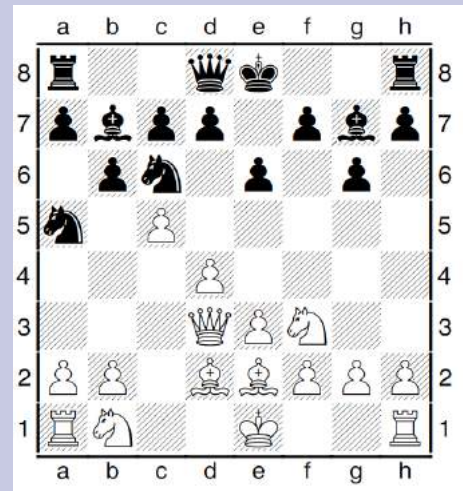
Q35. How can Black trap a queen?



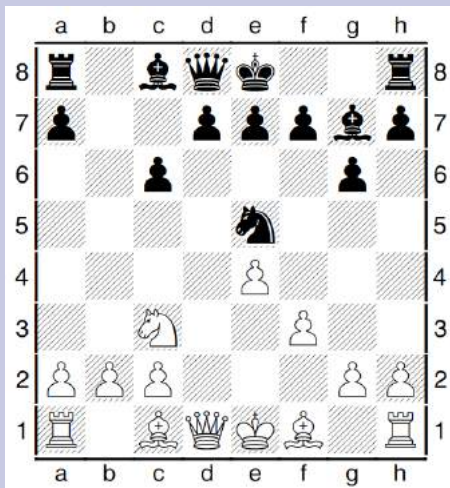
Q36. How can Black trap a queen?



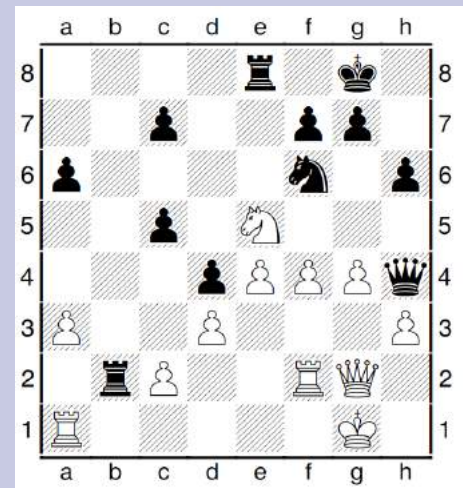
Q37. How can White trap a piece?



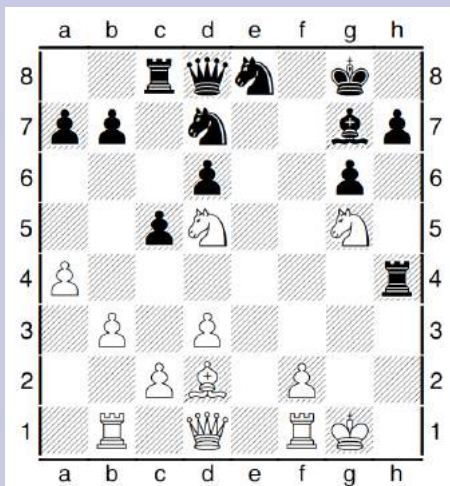
Q38. How can White trap a piece?



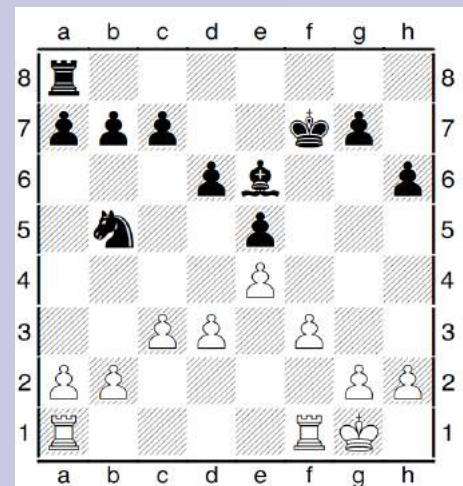
Q39. How can White trap a piece?



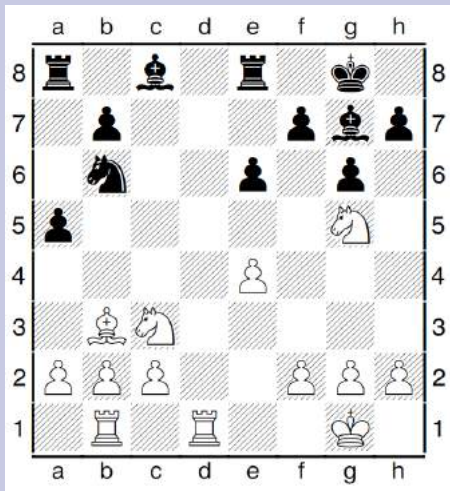
Q40. How can White trap a piece?



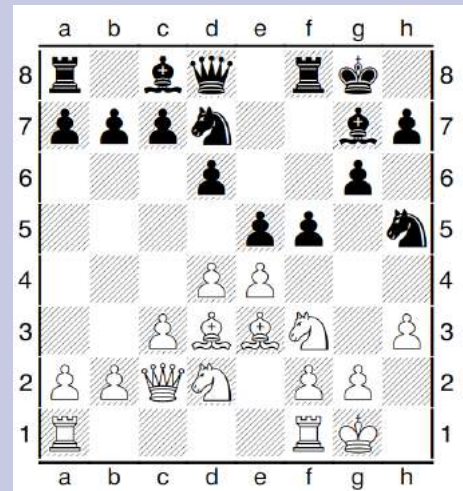
Q41. How can White trap a piece?



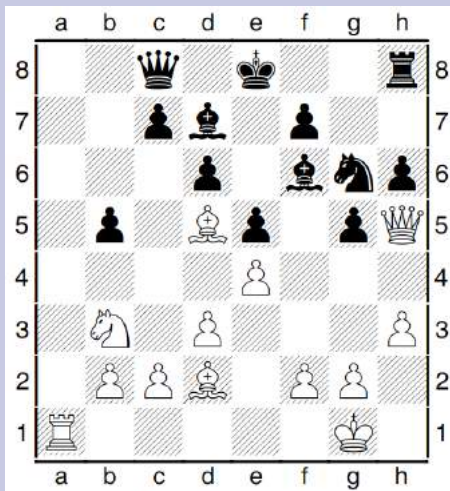
Q42. How can White trap a piece?



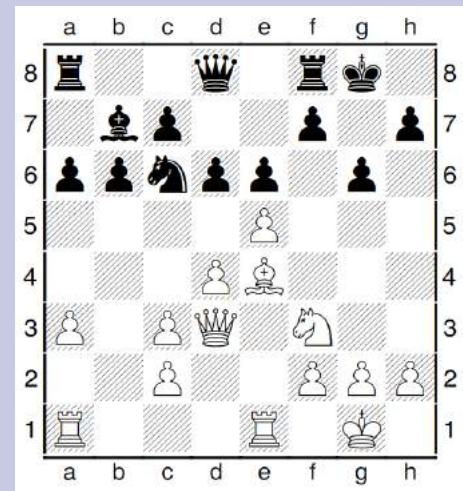
Q43. How can Black trap a piece?



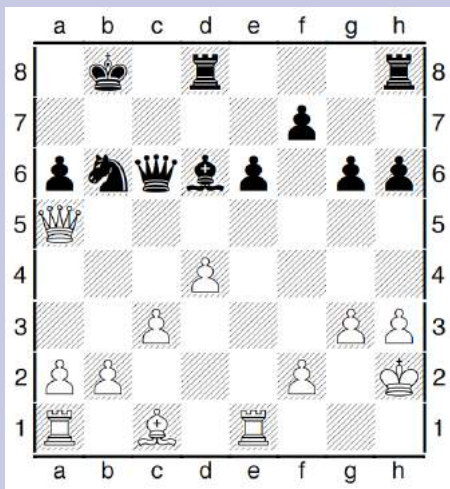
Q44. How can Black trap a piece?



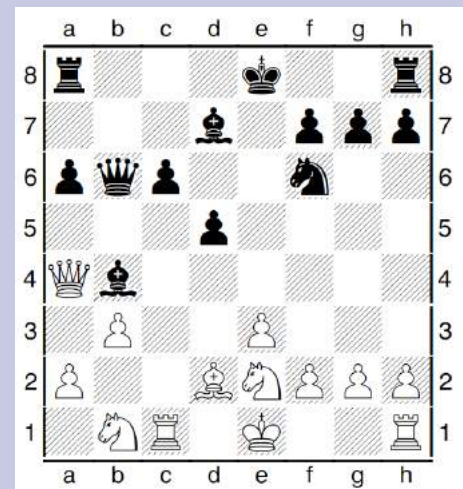
Q45. How can Black trap a piece?



Q46. How can Black trap a piece?

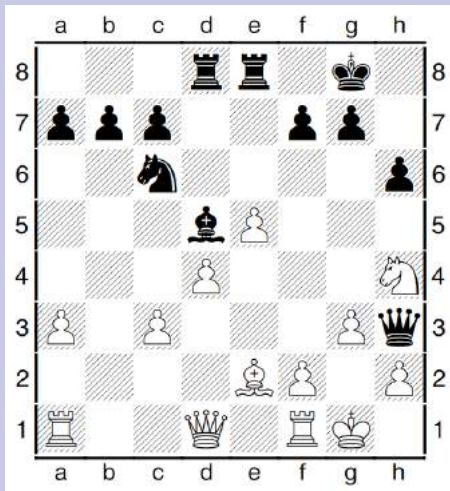


Q47. How can Black trap a piece?

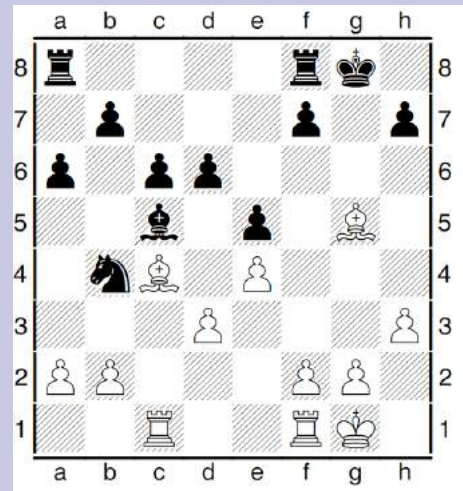


Q48. How can Black trap a piece?

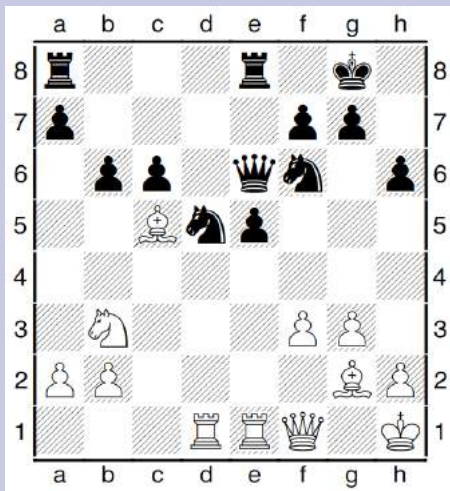




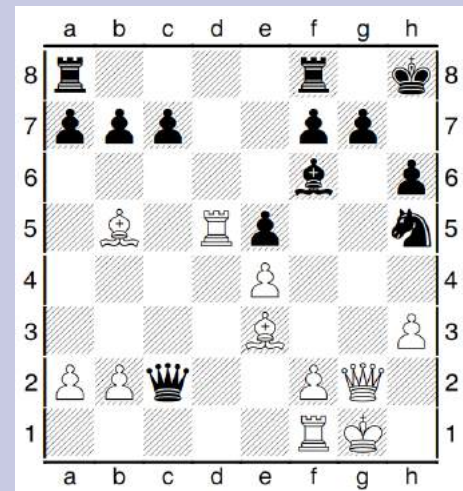
Q49. How can White trap a piece?



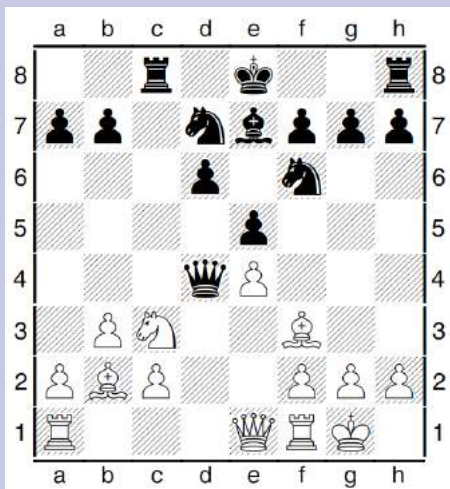
Q50. How can White trap a piece?



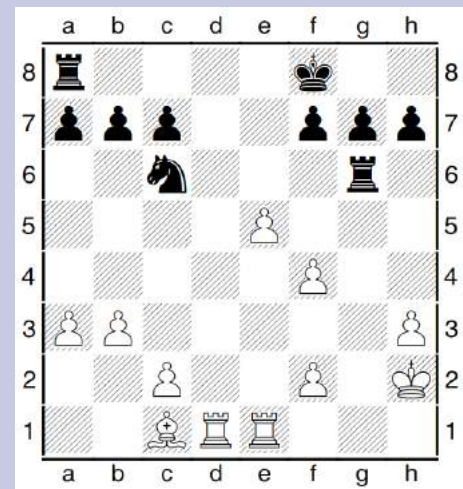
Q51. How can White trap a piece?



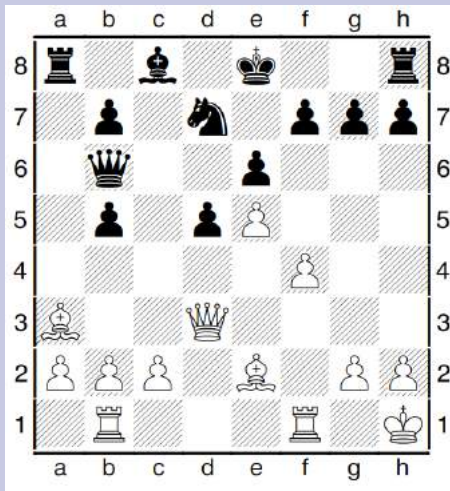
Q52. How can White trap a piece?



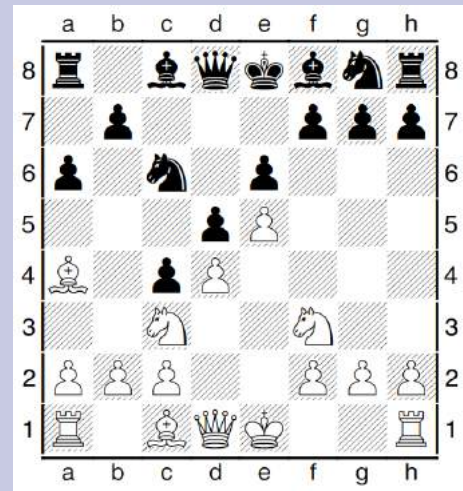
Q53. How can White trap a piece?



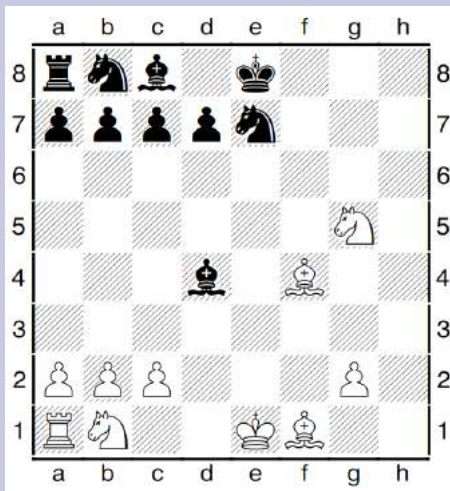
Q54. How can White trap a piece?



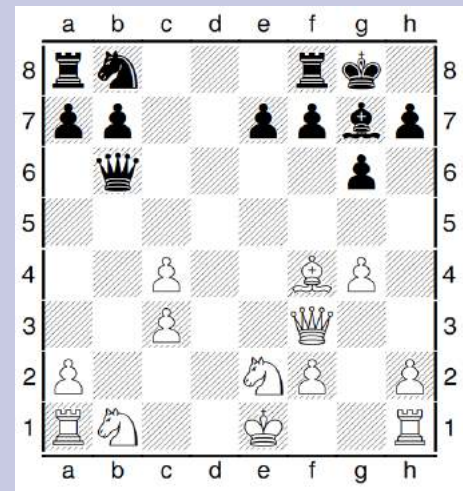
Q55. How can Black trap a piece?



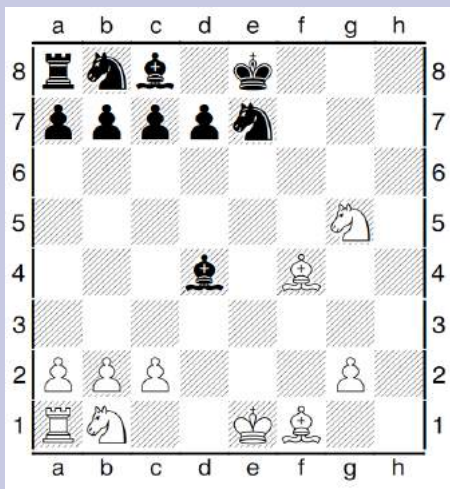
Q56. How can Black trap a piece?



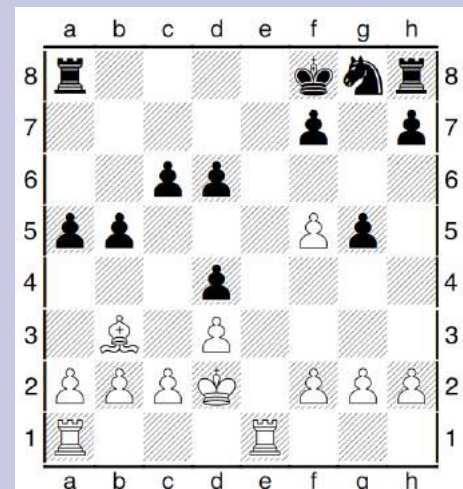
Q57. How can Black trap a piece?



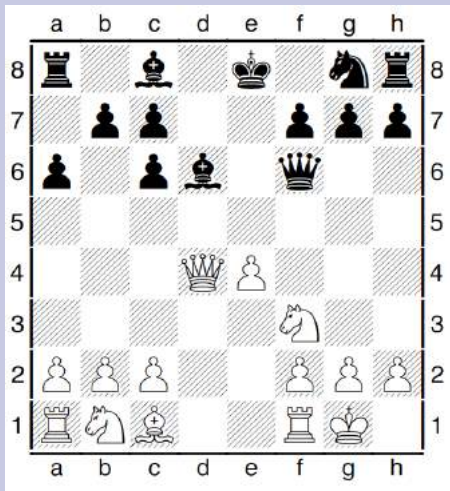
Q58. How can Black trap a piece?



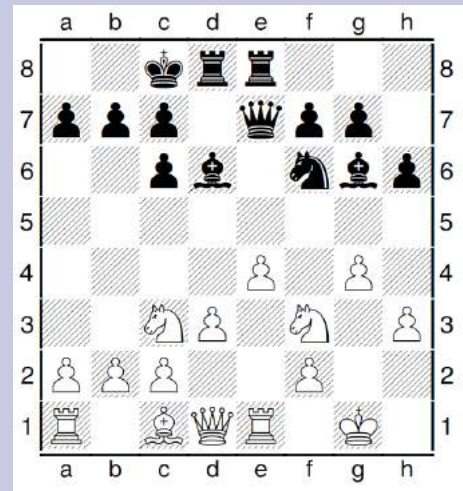
Q59. How can Black trap a piece?



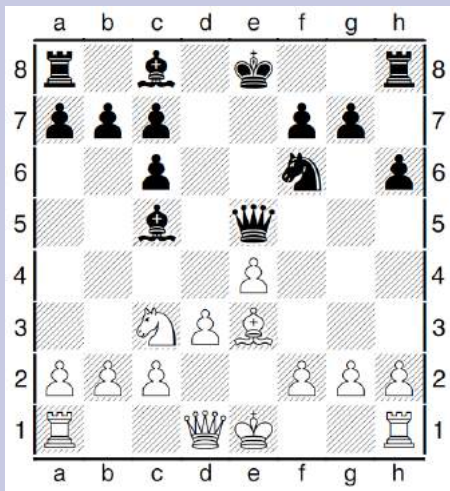
Q60. How can Black trap a piece?



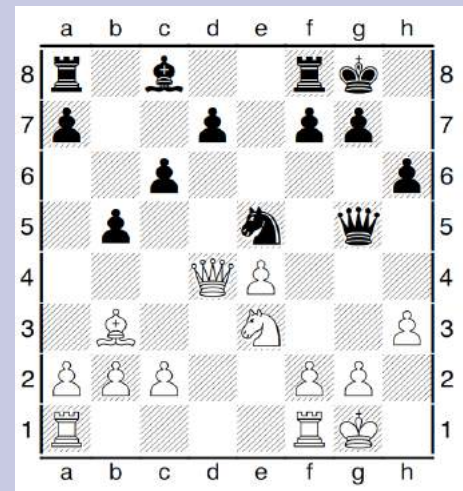
Q61. Find a pawn fork for White



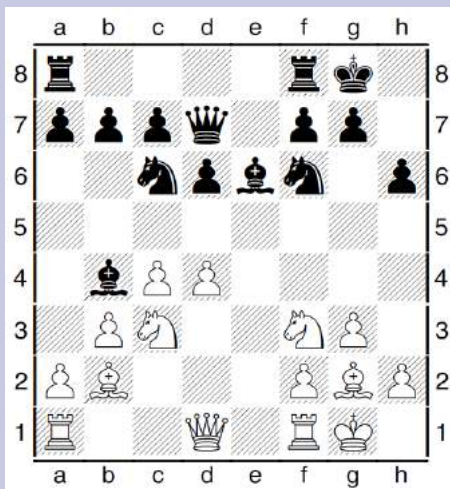
Q62. Find a pawn fork for White



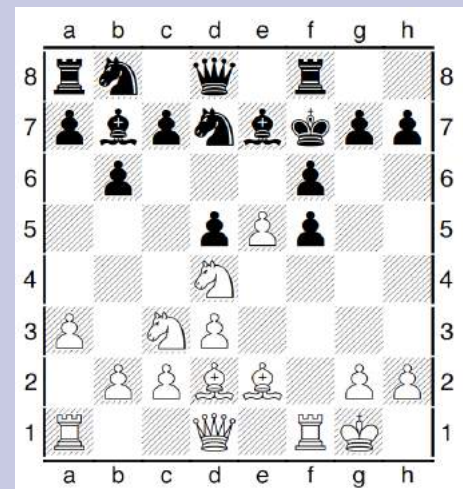
Q63. Find a pawn fork for White



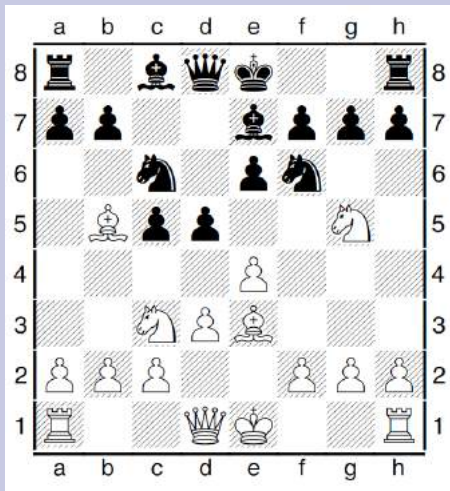
Q64. Find a pawn fork for White



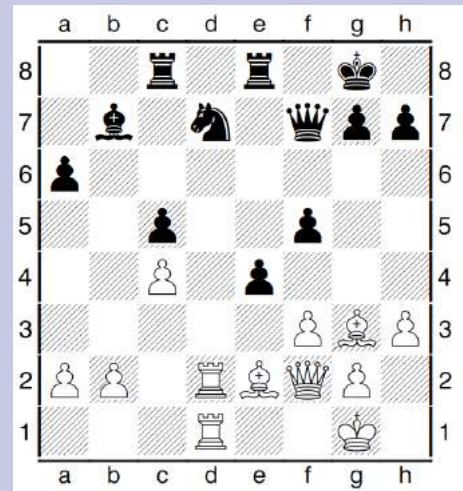
Q65. Find a pawn fork for White



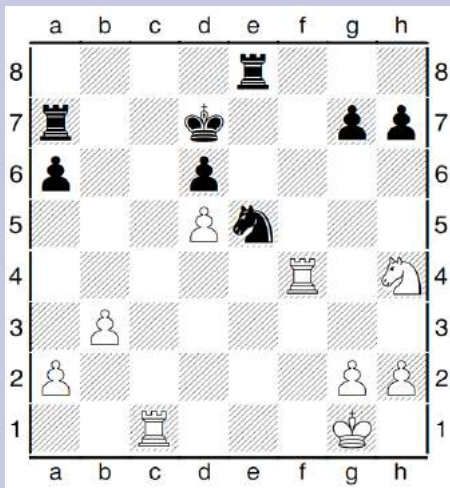
Q66. Find a pawn fork for White



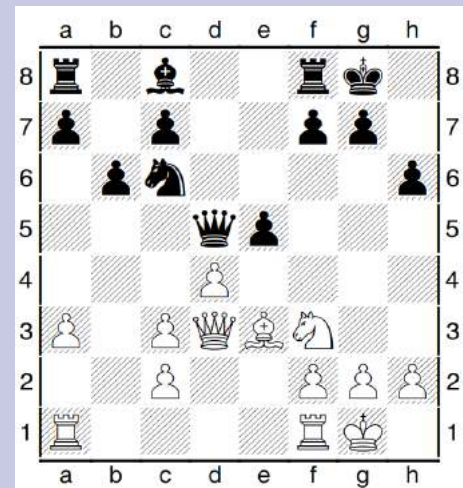
Q67. Find a pawn fork for Black



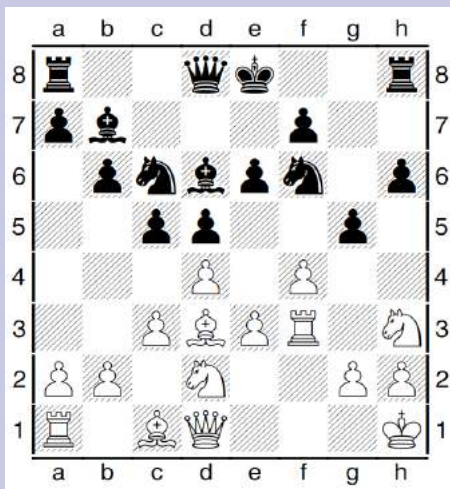
Q68. Find a pawn fork for Black



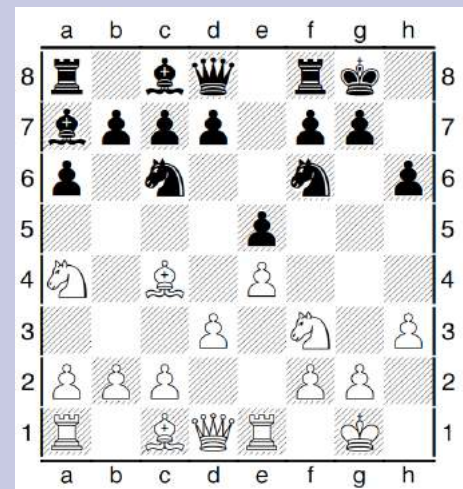
Q69. Find a pawn fork for Black



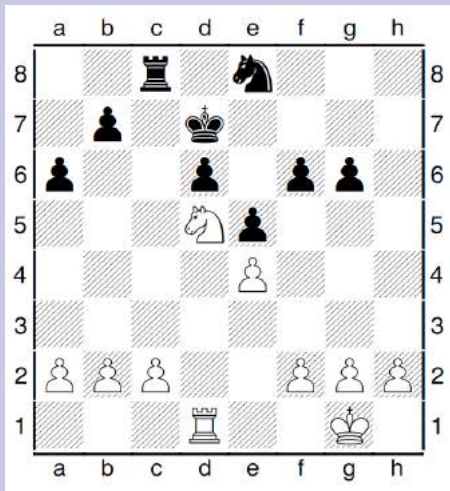
Q70. Find a pawn fork for Black



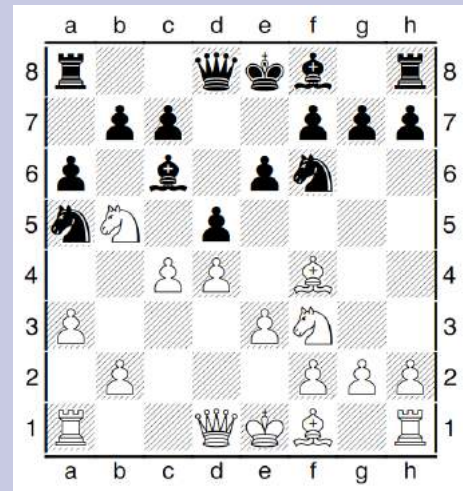
Q71. Find a pawn fork for Black



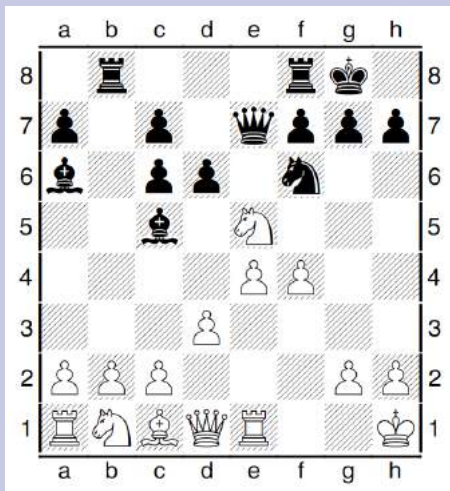
Q72. Find a pawn fork for Black



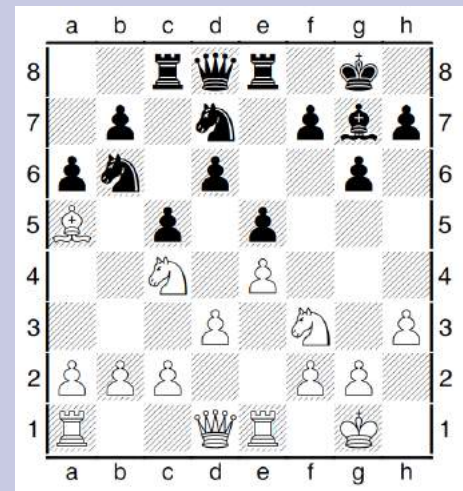
Q73. Find a knight fork for White



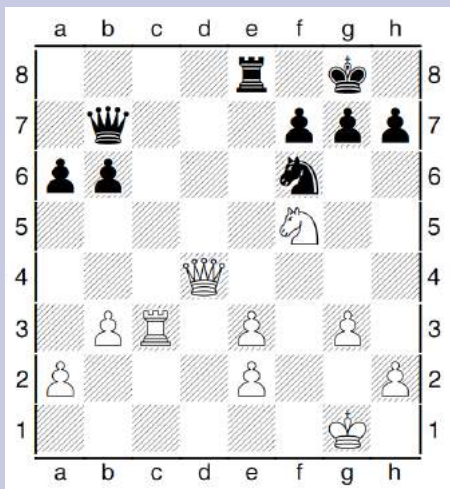
Q74. Find a knight fork for White



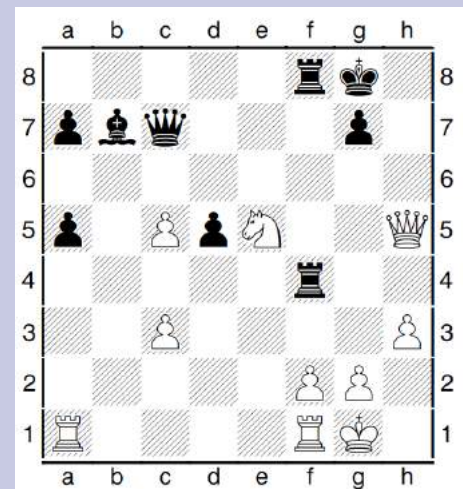
Q75. Find a knight fork for White



Q76. Find a knight fork for White



Q77. Find a knight fork for White



Q78. Find a knight fork for White