

BETH STYLE CALLIGRAPHY

PREMIUM WORKSHEET SET

It is important to master “faux calligraphy” -- calligraphy with a regular ballpoint or gel point pen -- before you attempt it with a dip pen. When you’re learning this style with a regular pen, you don’t have to concern yourself with putting pressure on or off the nib, ink spatter, or any of the extra things to think about when using a dip pen. You’re simply familiarizing yourself with the letter forms and learning how to create them so they look natural and effortless; both when you create them using faux calligraphy and regular calligraphy.

Learning faux calligraphy in the Beth style isn’t just a segue into learning dip pen calligraphy. There will be times when you need to use calligraphy on surfaces that aren’t conducive to calligraphy; for example: chalkboards, rocks or sand dollars (people have been using these as place cards), wood, and anything else that’s not smooth paper. Mastery of faux calligraphy will allow you to be very versatile in creating this style on any surface.

You may practice your faux calligraphy on any paper you wish; though I have found regular printer paper to be quite sufficient! Take a look at the alphabet below before you begin.

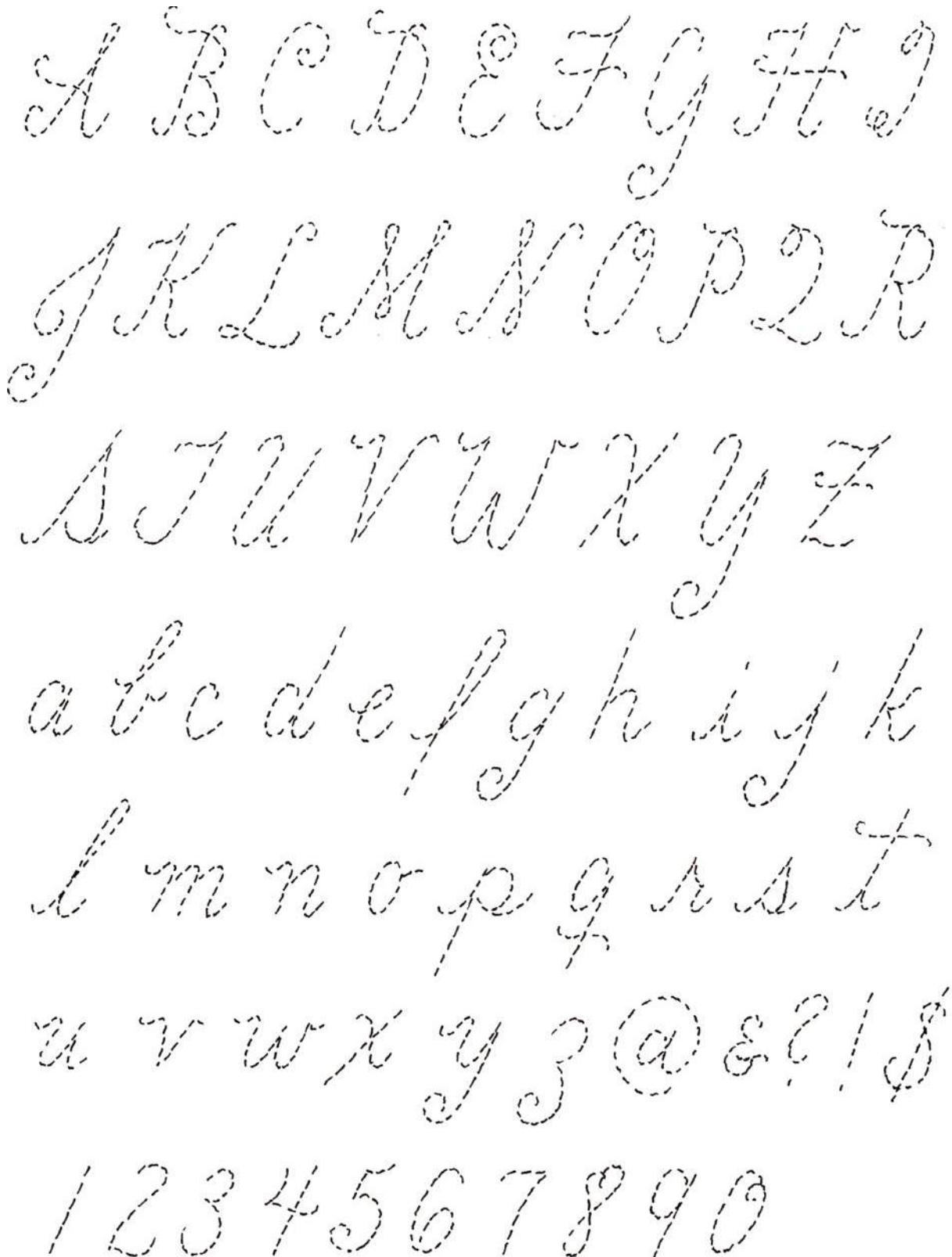
FAUX CALLIGRAPHY ALPHABET

A B C D E F G H I J K L M N
O P Q R S T U V W X Y Z
a b c d e f g h i j k l m n o p q r s
t u v w x y z 1 2 3 4 5 6 7 8 9 0
@ & ? ! \$

GHOST TRACER

WORKSHEET

Trace over the letters on this worksheet to help you to understand and familiarize yourself with forms. You may use this both for faux calligraphy and dip pen calligraphy.



HOW TO CREATE FAUX CALLIGRAPHY



Start with a letter outline.



Then draw lines to create the downstroke outlines*:



Fill in the downstrokes, and your letter is finished!:

***WHAT IS A DOWNSTROKE?** Every piece of writing, formal or informal, English or any other language, is comprised of a series of upstrokes and downstrokes. When you drag your pen up to make a letter, that's an upstroke. When you drag it down, that's a downstroke. Neutral strokes are neither downstrokes nor upstrokes.

THE DOWNSTROKE TEST: If you're not sure where the downstrokes are and where the upstrokes are, you can conduct the "downstroke test". Trace the letter in the air with your finger to quickly ascertain what the stroke positioning is. Everytime your finger goes down, that's a downstroke. You may also consult the **Stroke Reference Sheet** (p. 16) included in this worksheet set.

LETTER FORMATION PRACTICE

First, trace all the letters on the **Ghost Tracer Worksheet** (p. 2) to get a feel for letter form. You may use a ballpoint pen or a gel pen to do so. Next, use the following to practice your letter formation; I recommend writing each letter at least three times.

A

B

C

D

E

F

G

H

J

K

M

O

Q

S

U

W

Y

a

L

N

P

R

T

V

X

Z

b

c

e

g

i

k

m

o

q

s

u

d

f

h

j

n

p

r

t

v

w

x

y

3

1

2

3

4

5

6

7

8

9

0

@

&

?

!

\$

DOWNSTROKE IDENTIFICATION

WORKSHEET

Draw in the downstroke lines on this alphabet. Use the **Downstroke Identification Answer Key (next page)** to evaluate your work.

A B C D E F G H I J K L
M N O P Q R S T U V W
X Y Z a b c d e f g h i j
k l m n o p q r s t u
v w x y z @ & ? ! \$
1 2 3 4 5 6 7 8 9 0

DOWNSTROKE IDENTIFICATION

ANSWER KEY

A B C D E F G H I J K L

M N O P Q R S T U V

W X Y Z a b c d e f g h i

j k l m n o p q r s

t u v w x y z @ & ? ! \$

1 2 3 4 5 6 7 8 9 0

WORD PRACTICE

Try writing some words in faux calligraphy to familiarize yourself with letter forms. If you are unsure of how to connect the letters, reference the Letter Connection Worksheet. Here are some examples of words you could write: love, Apple, affix, Oxygen, bijoux, Charlotte, Elegance, artisan, Magazine, chocolate, London, svelte, vanilla, classic, Foster, sunshine, vase, chess, leaves, Australia, lavender

Handwriting practice lines consisting of solid top and bottom lines with a dashed midline, repeated across the page.

DIP PEN CALLIGRAPHY

Now that you've mastered faux calligraphy, it's time to experiment with Beth Style using a dip pen. I find it easiest to practice on 60-80 lb. drawing paper (found in hobby/art supply stores and any general store with an art department) with waterproof India ink (Speedball brand). This style is best achieved using a straight pen (not an oblique) because of its relatively upright angle.

To create this style, I would recommend a Brause Blue Pumpkin nib for all skill levels of calligraphers. Before beginning, it's important to understand how to make thick downstrokes and thin upstrokes; so let's touch on that a bit:

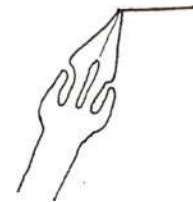
DOWNSTROKE



UPSTROKE



NEUTRAL STROKE



Downstrokes: As you learned from creating faux calligraphy, downstrokes occur when your stroke direction is downward. Downstrokes are considerably thicker than upstrokes because with downstrokes, you apply pressure to the nib. This pressure causes the tines to spread, which results in a nice, thick flow. It's easier to create downstrokes than upstrokes because there's very little chance of the nib's tip catching on the paper.

Upstrokes: Upstrokes occur when your stroke direction is upward. For upstrokes, you'll want to apply as little pressure as possible while still maintaining ink flow. To achieve this, barely stroke your nib upward, dragging ink from your downstroke in a whisper-thin line. The reason for applying delicate pressure is not only contrast with the downstrokes, but also to reduce the risk of your nib catching on the paper and spattering ink.

Neutral Strokes: You'll also notice me referring to these as "midstrokes". Neutral strokes are the horizontal strokes that are neither upstrokes nor downstrokes. These are thin strokes, but generally are a little bit thicker than upstrokes. Think of the cross on a lowercase "t".

Some Tips and Tricks:

1. When dipping your ink, you'll dip it halfway to 3/4 of the way up the well (the hole in the center of the nib). The gray area on Figure 1 represents ink.

2. If you can't get your ink to flow after dipping, dip the very tip of your nib in water, then try again. The ink should flow now!

3. When you notice your ink is not flowing as easily, clean off your nib in water. I find it's easiest to keep a cup of water beside me to dip the pen in and clean it off as I work. Dry it off with a cloth that isn't easy for the nib to catch on, such as a tight-woven cloth napkin. Then you're good to go again!



Figure 1

STROKE PRACTICE

Practice writing these strokes with your dip pen:



DIP PEN CALLIGRAPHY LETTERS

A B C D E F G H I J K L
M N O P Q R S T U V W
X Y Z a b c d e f g h i j k l m
n o p q r s t u v w x y z @ &
1 2 3 4 5 6 7 8 9 0 ? ! \$

LETTER FORMATION PRACTICE

If you'd like, you can trace the letters on the **Ghost Tracer Worksheet** (page 2) first; or you can just jump in! Consult the **Stroke Reference Sheet** (page 16) if you are unsure of how to go about writing a particular letter. If you need extra practice, print off the **Extra Practice Worksheet**.

A

C

E

G

K

M

O

Q

B

D

F

H

I

N

P

R

A

U

W

Y

a

c

e

g

i

k

J

V

X

Z

b

d

f

h

j

l

m

n

o

p

q

r

s

t

u

v

w

x

y

3

/

2

3

4

5

6

7

8

9

0

@

&

?

!

\$

STROKE REFERENCE SHEET

These graphics will help you understand exactly how letters are formed with directional arrows and an indication of where the starting point is. Reference this sheet whenever you're in doubt.



STROKE REFERENCE SHEET CONTINUED



WORD PRACTICE

Write these words on the lines provided under each word group. The stroke formation of each word follows.

How quickly daft

jumping zebras vex!



GENERAL PRACTICE WORKSHEET

Use this worksheet for lined general practice.

The worksheet contains 10 sets of horizontal lines for handwriting practice. Each set consists of a solid top line, a dashed middle line, and a solid bottom line, providing a guide for letter height and placement.