

Mem

Christophe Pillet, 2012



Armchair

Un disegno di sofisticati angoli e curve appena accennate. I due fori sulla seduta sono dettagli estetici e funzionali, perché la rendono impilabile.

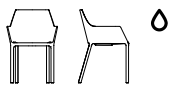
A design with sophisticated corners and barely noticeable curves. The two holes in the seat are aesthetic and functional details that make it stackable.

Ein Entwurf mit raffinierten, kaum wahrnehmbaren Winkeln und Kurven. Die beiden Öffnungen in der Sitzfläche sind ein ästhetisches und funktionelles Detail, da sie den Sessel stapelbar machen.

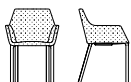
Un dessin élégant, avec des angles et des courbes à peine esquissées. Les deux ouvertures sur l'assise sont des détails à la fois esthétiques et fonctionnels puisqu'ils permettent de l'empiler.

KRISTALIA

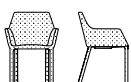
Dimensions



Stackable armchair
L 56 P 58 H 81 cm
W 22" D 22⁷/₈" H 31⁷/₈"



Armchair partial upholstered
L 58 P 61 H 83 cm
W 22⁷/₈" D 24" H 32⁵/₈"



Armchair fully upholstered
L 58 P 61 H 80 cm
W 31⁴/₈" D 24" H 31⁴/₈"

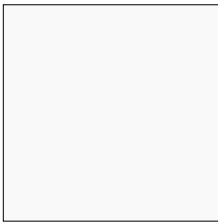


Mem cushion, Lips-D
Removable cushions

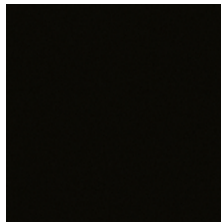
Accessories

- Mem removable cushion
- Lips removable cushions
- Casper protective cover

Polypropylene base (indoor/outdoor)



White

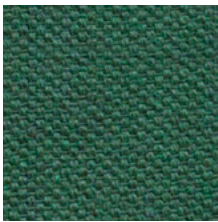


Black



Beige

Upholstery (indoor)



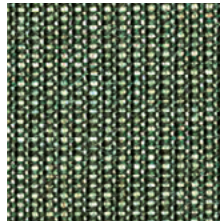
Alveo fabric
12 colours



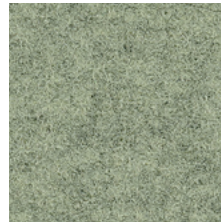
Biacco fabric
6 colours



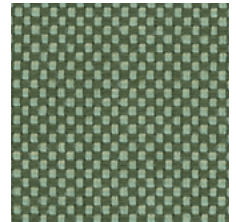
Borgo fabric
9 colours



Canvas 2 (Kvadrat) fabric
45 colours



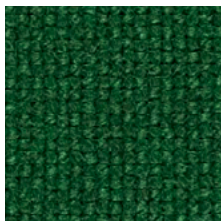
Divina Melange 3 (Kvadrat) fabric
38 colours



Field 2 (Kvadrat) fabric
30 colours



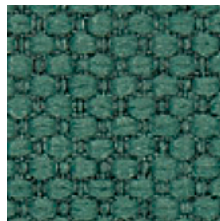
Greto fabric
5 colours



Hallingdal 65 (Kvadrat) fabric
58 colours



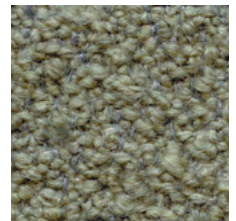
Hero 2 (Kvadrat) fabric
33 colours



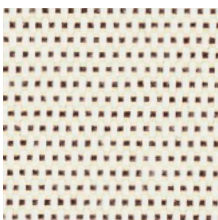
Merit (Maharam) fabric
43 colours



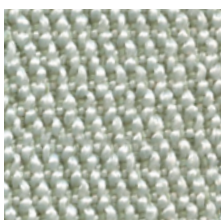
Moss (Sahco) fabric
22 colours



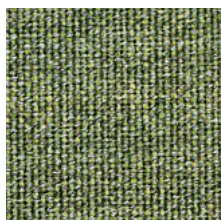
Orsetto (ONE Mario Sirtori) fabric
6 colours



Patio (Kvadrat) fabric
24 colours



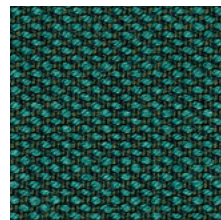
RePo 3D
16 colours



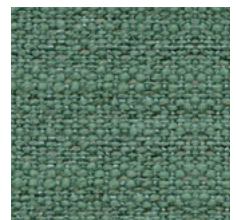
Remix 3 (Kvadrat) fabric
72 colours



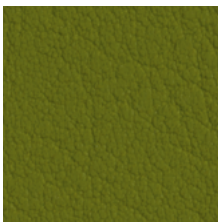
Scuba (Maharam) fabric
15 colours



Steelcut Trio 3 (Kvadrat) fabric
54 colours



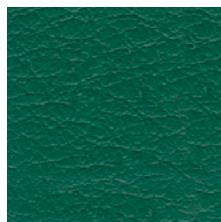
Stipa fabric
10 colours



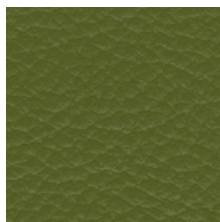
Valencia (Spradling)
synthetic leather
66 colours



Vello fabric
13 colours



Elmosoft IX (Elmo)
semi-aniline leather
70 colours



Neocoast (Elmo)
pigmented & printed leather
20 colours

More finishes and coverings info:

[Materials & Finishes](#)