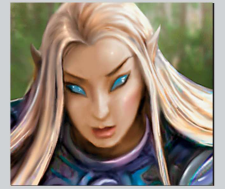


Lady Sylvana



Player Name

Character Name

Racial Features

Eladrin Education

Training in any one additional skill.

Eladrin Weapon Proficiency

Proficient with longsword.

Eladrin Will

+1 Will; +5 to saving throws against charm.

Fey Origin

Your origin is fey, not natural

Fey Step

Use fey step as an encounter power.

Trance

Meditate aware 4 hours instead of sleep.

Class/Other Features

Companion Spirit

Gain the call spirit companion power and choose a Companion Spirit option

Healing Spirit

Gain the healing spirit power

Speak with Spirits

Gain the speak with spirits power

Stalker Spirit

Ally adjacent to spirit companion adds your Int mod to damage rolls against bloodied foes

Feats

Totem Expertise

+1/2/3 (by tier) to attack rolls with totems, ignore partial cover and partial concealment on those attacks

Resilient Spirit

+2 to defenses for spirit companion

Impending Victory

+1 attack with at-will powers against bloodied creatures

Sudden Call

Use call spirit companion as a free action, 1/ encounter