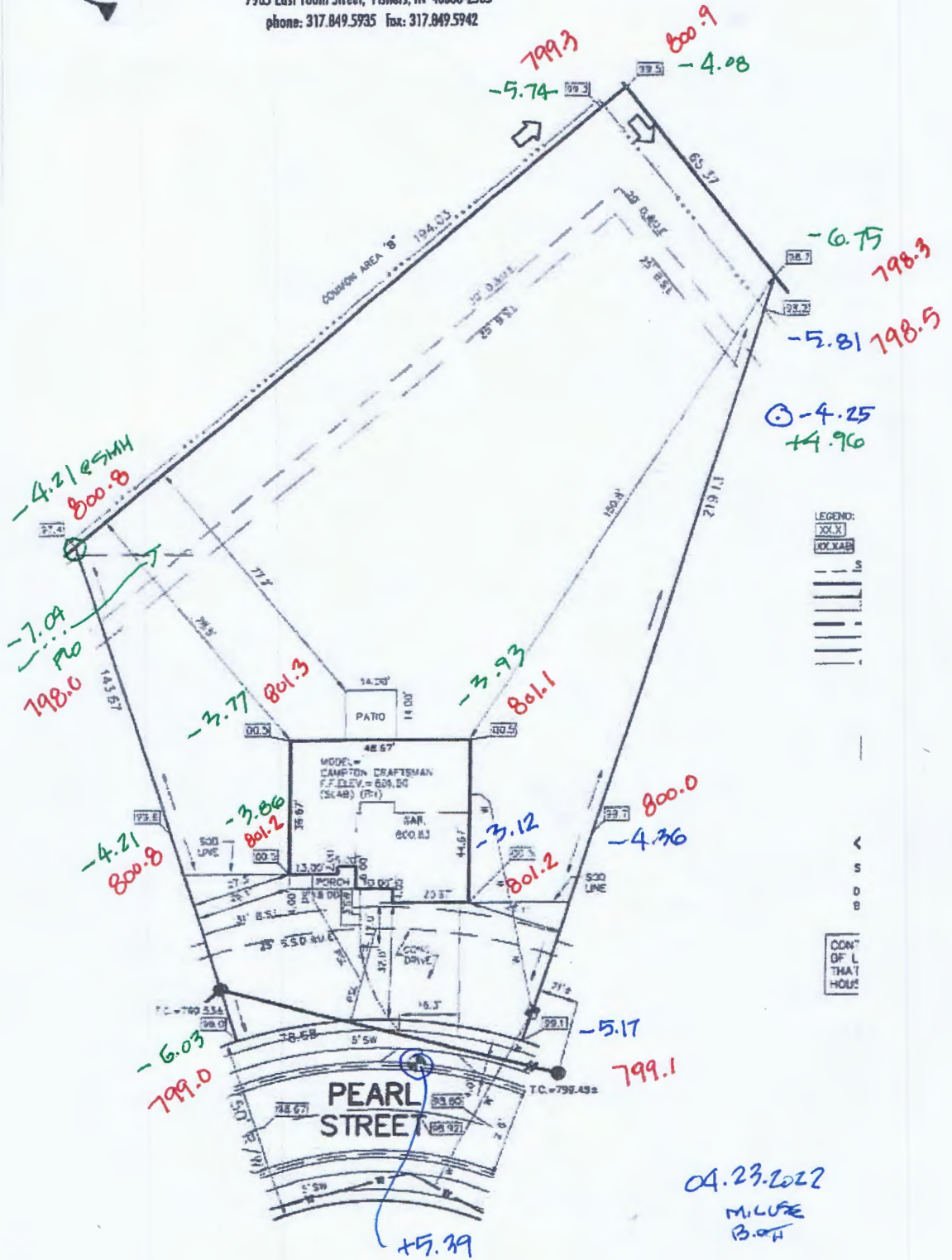




ALWAYS ON

7965 East 106th Street, Fishers, IN 46038-2505
phone: 317.849.5935 fax: 317.849.5942



**LOT 12
SADDLEBROOK
SECTION ONE B**

INST. #2020-023112
P.B. E, PG. #459 A-C
ZONING: PUD
10' MINIMUM SIDE YARD
25' MINIMUM FRONT YARD

ALL UNDERGROUND SEWERS AND UTILITIES
SHOWN ARE PLOTTED BY SCALE FROM
DESIGN PLANS FURNISHED BY ENGINEER
THE ACTUAL FIELD LOCATION MAY VARY.

BENCHMARK
TOP OF CURB = 798.32

| | |
|-----------------|------------------|
| SOD: | 2,931 ± Sq. Ft. |
| SEEDING: | 22,943 ± Sq. Ft. |
| CONC. DRIVEWAY: | 1,071 ± Sq. Ft. |
| PRIVATE WALK: | 37 ± Sq. Ft. |
| PUBLIC WALK: | 294 ± Sq. Ft. |

STOEPPELWERTH

ALWAYS ON

7965 East 106th Street, Fishers, IN 46038-2505
 phone: 317.849.5935 fax: 317.849.5942

JOB IDSADBKFARMS.13

CONTROL# 96589 DRH

41 DYSON DRIVE
 WHITELAND, IN 46184

1" = 30'
 LOT AREA: 21,274 Sq. Ft.

LOT COVERAGE=14.8%



798.3
 -5.85
 -5.04
 798.5
 -4.00
 +3.82

96.5 -7.18 796.7
 T.C.=795.34±
 -8.68 PLO
 795.21

800.9
 -3.24
 800.6
 -3.30
 800.8
 -3.05

CONTRACTOR SHALL CUT 14.5' OFF OF LATERAL AND BEGIN FROM THAT POINT AND CONNECT TO HOUSE FOLLOWING PLOT PLAN.

ALL UNDERGROUND SEWERS AND UTILITIES SHOWN ARE PLOTTED BY SCALE FROM DESIGN PLANS FURNISHED BY ENGINEER THE ACTUAL FIELD LOCATION MAY VARY.

BENCHMARK
 TOP OF CURB=798.80

SOD: 2,083± Sq. Ft.
 SEEDING: 16,313± Sq. Ft.
 CONC. DRIVEWAY: 1,035± Sq. Ft.
 PRIVATE WALK: 37± Sq. Ft.
 PUBLIC WALK: 226± Sq. Ft.

04.23.22
 B.O
 MAIL

799.1
 -5.02
 +5.35

-4.98
 798.9

- LEGEND:
- XXX PROPOSED GRADE PER PLAN
 - XXXAB AS BUILT GRADE
 - S.S.D. --- SUB-SURFACE DRAIN
 - SANITARY SEWER
 - 8" AS BUILT SANITARY LATERAL
 - 8" PROPOSED SANITARY LATERAL
 - STORM SEWER
 - 3/4" WATER CONNECTION
 - WATER MAIN
 - SWALE
 - SANITARY MANHOLE
 - STORM MANHOLE
 - CURB INLET
 - ⊗ FIRE HYDRANT
 - ⊠ WATER METER
 - ← EMERGENCY FLOOD ROUTE
 - S.D.&U.E. SEWER, DRAINAGE & UTILITY EASEMENT
 - D.&U.E. DRAINAGE & UTILITY EASEMENT
 - B.S.L. BUILDING SETBACK LINE

LOT 13
 SADDLEBROOK
 SECTION ONE B
 INST. #2020-023112
 P.B. E, PG. #459 A-C
 ZONING: PUD
 10' MINIMUM SIDE YARD
 25' MINIMUM FRONT YARD
 25' MINIMUM REAR YARD
 40% MAXIMUM LOT COVERAGE

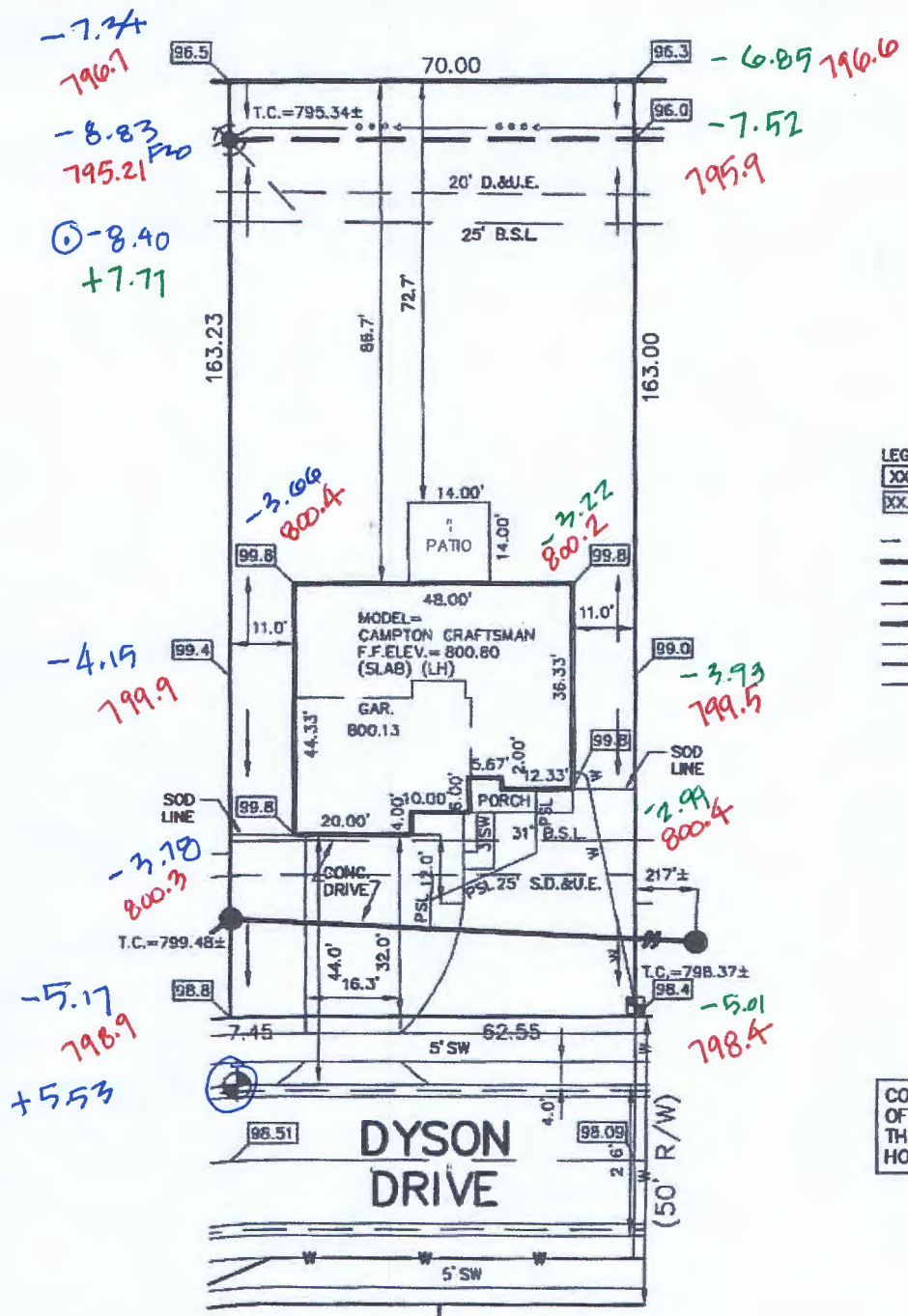


David J. Stoepfelwerth

NOTE: THIS DRAWING IS NOT INTENDED TO BE REPRESENTED AS A RETRACEMENT OR ORIGINAL BOUNDARY SURVEY, A ROUTE SURVEY OR A SURVEYOR LOCATION REPORT.

02/26/21 JOB





1"
 LOT AREA
 LOT COV

- LEGEND:
- XX.X PROPOSED GR
 - XX.XAB AS BUILT GRA
 - S.S.D. S
 - ASL S
 - PSL S
 - W S
 - W W
 - SOD LINE S
 - S S
 - C C
 - F F
 - W W
 - S.D.&U.E. S
 - D.&U.E. D
 - B.S.L. B

CONTRACTOR SHALL OF LATERAL AND BI THAT POINT AND C HOUSE FOLLOWING

LOT 14
SADDLEBROOK
SECTION ONE B
 INST. #2020-023112
 P.B. E, PG. #459 A-C
 ZONING: PUD
 10' MINIMUM SIDE YARD
 25' MINIMUM FRONT YARD
 25' MINIMUM REAR YARD
 40% MAXIMUM LOT COVERAGE

ALL UNDERGROUND SEWERS AND UTILITIES SHOWN ARE PLOTTED BY SCALE FROM DESIGN PLANS FURNISHED BY ENGINEER. THE ACTUAL FIELD LOCATION MAY VARY.

David J.

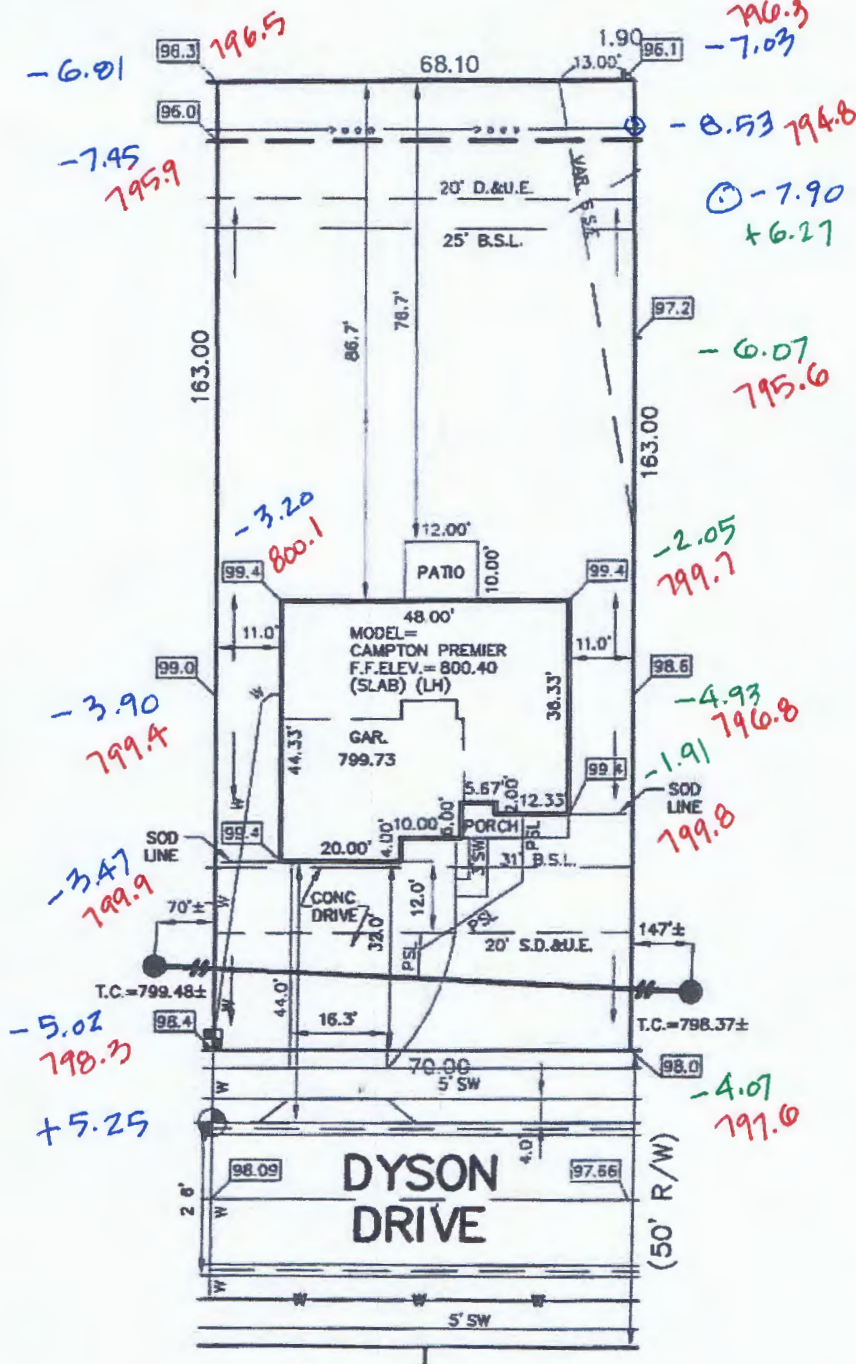
BENCHMARK
 TOP OF CURB=798.51

NOTE: THIS REPRESENTS BOUNDARY SURVEYOR

SOD: 1,913 ± Sq. Ft.
 SEEDING: 6,758 ± Sq. Ft.
 CONC. DRIVEWAY: 1,062 ± Sq. Ft.
 PRIVATE WALK: 37 ± Sq. Ft.
 PUBLIC WALK: 269 ± Sq. Ft.

LOT ARE.

LOT CO



- LEGEND:
- XX.X PROPOSED G
 - XX.XAB AS BUILT GR
 - S.S.D.
 - ASL
 - PSL
 - W
 - W
 - SOD LINE
 - S.D.&U.E.
 - D.&U.E.
 - B.S.L.
 - S.S.E.
 - VAR.

CONTRACTOR OF LATERAL THAT POINT / HOUSE FOLLO

**LOT 15
SADDLEBROOK
SECTION ONE B**

INST. #2020-023112
 P.B. E, PG. #459 A-C
 ZONING: PUD
 10' MINIMUM SIDE YARD
 25' MINIMUM FRONT YARD
 25' MINIMUM REAR YARD
 40% MAXIMUM LOT COVERAGE

ALL UNDERGROUND SEWERS AND UTILITIES SHOWN ARE PLOTTED BY SCALE FROM DESIGN PLANS FURNISHED BY ENGINEER THE ACTUAL FIELD LOCATION MAY VARY.

BENCHMARK
 TOP OF CURB=798.09

| | |
|-----------------|-----------------|
| SOD: | 1,913 ± Sq. Ft. |
| SEEDING: | 6,834 ± Sq. Ft. |
| CONC. DRIVEWAY: | 1,062 ± Sq. Ft. |
| PRIVATE WALK: | 37 ± Sq. Ft. |
| PUBLIC WALK: | 269 ± Sq. Ft. |

DAVID J. LA...
 David J.
 NOTE: THIS REPRESENTS BOUNDARY SURVEYOR I

STOEPPELWERTH

ALWAYS ON

7965 East 106th Street, Fishers, IN 46038-2505
 phone: 317.849.5935 fax: 317.849.5942

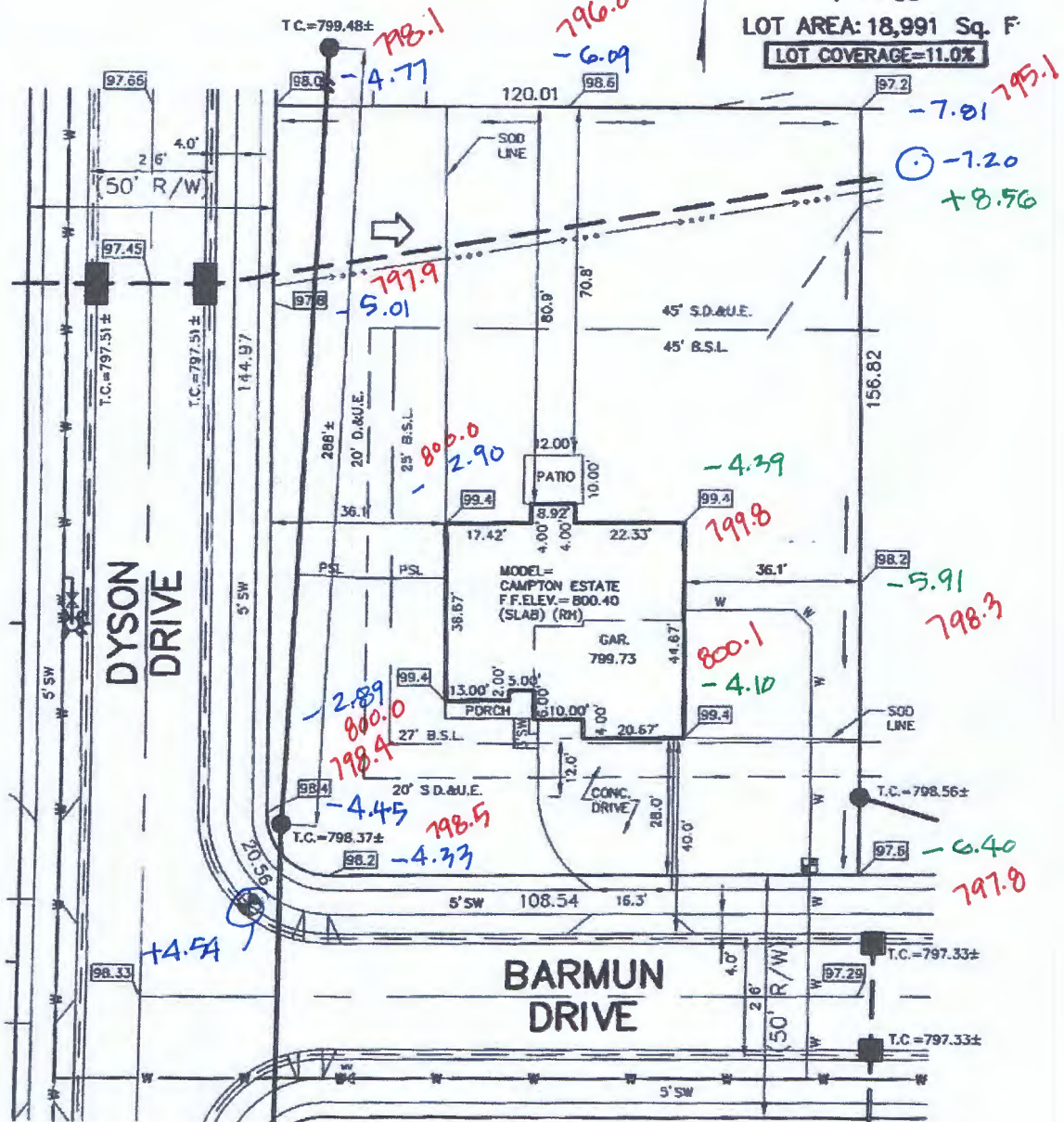
JOB 1DSADBKFARI

CONTROL# 96279 DF

910 BARMUN DRIVE
 WHITELAND, IN 46184
 1" = 30'

LOT AREA: 18,991 Sq. Ft.
LOT COVERAGE=11.0%

04.23.22
 300
 ML



- LEGEND:**
- XXLX PROPOSED GRADE PER PLAN
 - XX.XAB AS BUILT GRADE
 - S.S.D. --- SUB-SURFACE DRAIN
 - SANITARY SEWER --- SANITARY SEWER
 - ASL --- 6" AS BUILT SANITARY LATERAL
 - PSL --- 6" PROPOSED SANITARY LATERAL
 - STORM SEWER --- STORM SEWER
 - W --- 3/4" WATER CONNECTION
 - WATER MAIN --- WATER MAIN
 - SWALE --- SWALE
 - SANITARY MANHOLE
 - STORM MANHOLE
 - CURB INLET
 - ⊗ FIRE HYDRANT
 - ⊠ WATER METER
 - ⊞ WATER VALVE
 - ↑ EMERGENCY FLOOD ROUTE
 - S.D.&U.E. SEWER, DRAINAGE & UTILITY EASEMENT
 - D.&U.E. DRAINAGE & UTILITY EASEMENT
 - B.S.L. BUILDING SETBACK LINE

ALL UNDERGROUND SEWERS AND UTILITIES SHOWN ARE PLOTTED BY SCALE FROM DESIGN PLANS FURNISHED BY ENGINEER. THE ACTUAL FIELD LOCATION MAY VARY.

BENCHMARK
 TOP OF CURB = 798.33

SOD: 9,179 ± Sq. Ft.
 SEEDING: 8,631 ± Sq. Ft.
 CONC. DRIVEWAY: 988 ± Sq. Ft.
 PRIVATE WALK: 25 ± Sq. Ft.
 PUBLIC WALK: 1,360 ± Sq. Ft.



**LOT 16
 SADDLEBROOK
 SECTION ONE B**

INST. #2020-023112
 P.B. E, PG. #459 A-C

ZONING: PUD

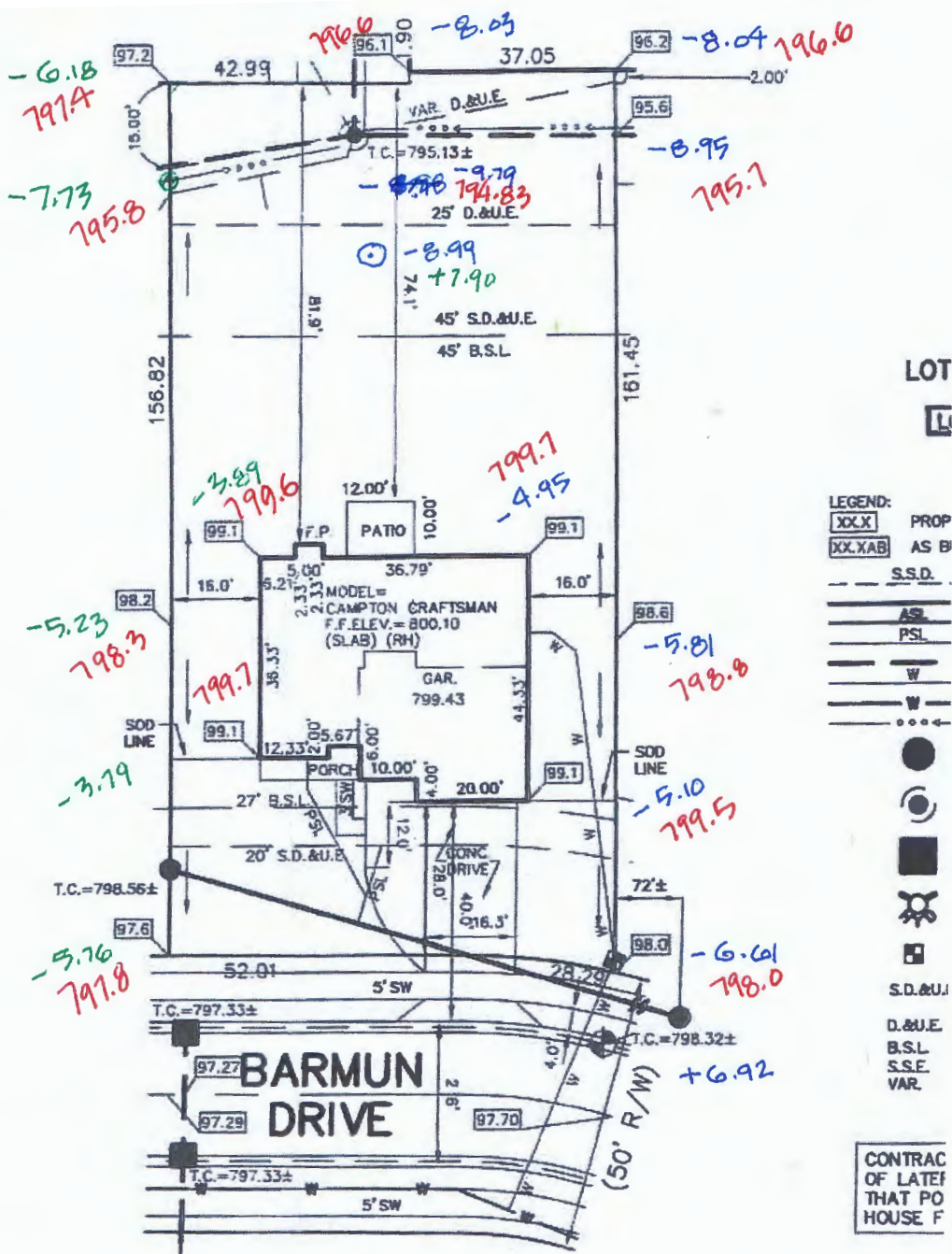
10' MINIMUM SIDE YARD
 25' MINIMUM FRONT YARD
 25' MINIMUM REAR YARD
 40% MAXIMUM LOT COVERAGE

David J. Stoepfelwirth

NOTE: THIS DRAWING IS NOT INTENDED REPRESENTED AS A RETRACEMENT OR C BOUNDARY SURVEY, A ROUTE SURVEY C SURVEYOR LOCATION REPORT.



04.23.22
PDB
ML



- LEGEND:
- XX.X PROP
 - XX.XAB AS B
 - S.S.D.
 - ASL
 - PSL
 - W
 - W
 - SOD LINE
 - SOD LINE
 - S.D.&U.E.
 - D.&U.E.
 - B.S.L.
 - S.S.E.
 - VAR.

CONTRACT OF LATEST THAT PO HOUSE F

LOT 17
SADDLEBROOK
SECTION ONE B
 INST. #2020-023112
 P.B. E, PG. #459 A-C
 ZONING: PUD
 10' MINIMUM SIDE YARD
 25' MINIMUM FRONT YARD
 25' MINIMUM REAR YARD
 40% MAXIMUM LOT COVERAGE

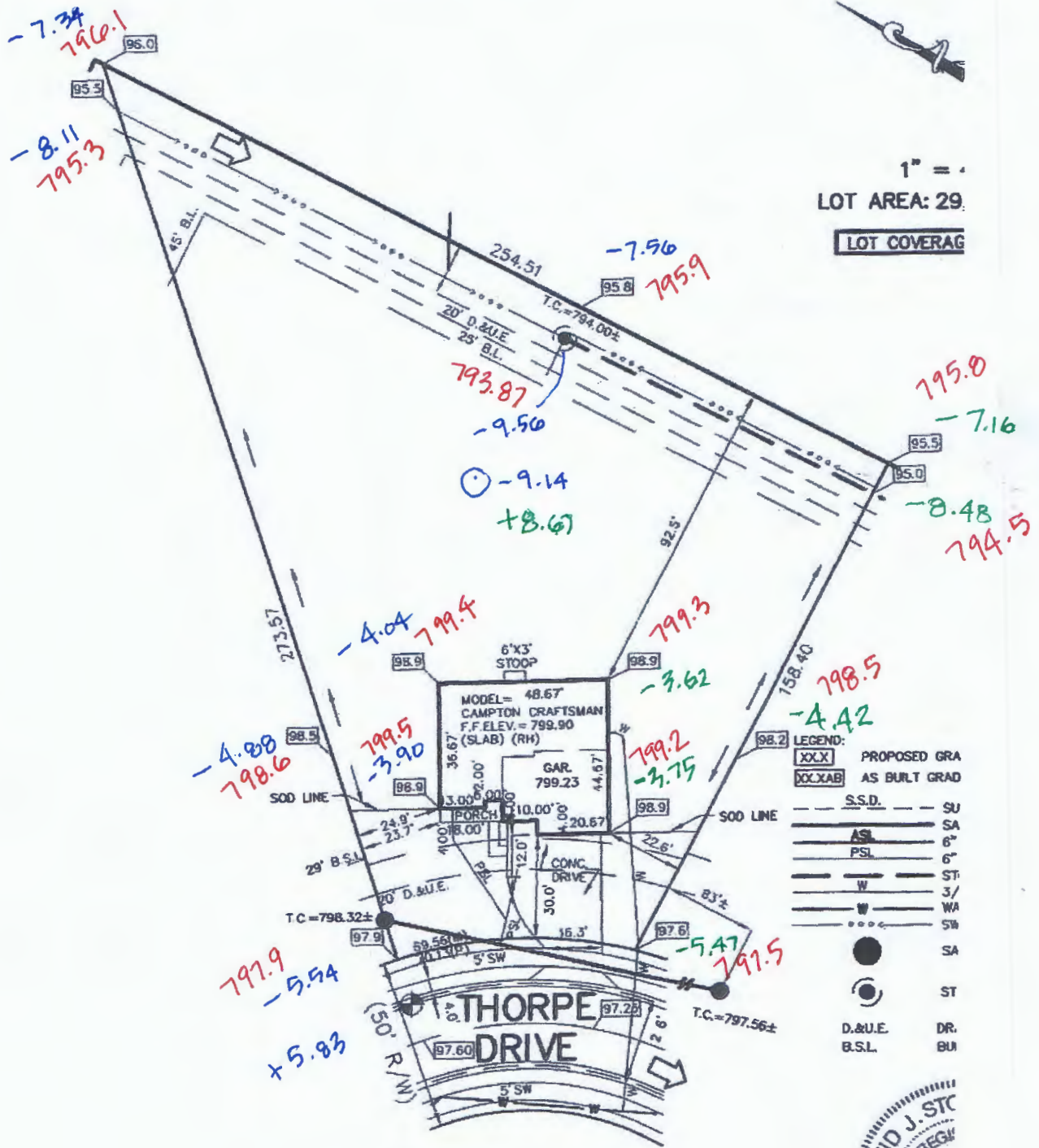
ALL UNDERGROUND SEWERS AND UTILITIES SHOWN ARE PLOTTED BY SCALE FROM DESIGN PLANS FURNISHED BY ENGINEER THE ACTUAL FIELD LOCATION MAY VARY.

Davis

BENCHMARK
 TOP OF CURB=797.70

NOT
 REP
 SOU
 SUR

SOD: 2,144 ± Sq. Ft.
 SEEDING: 7,968 ± Sq. Ft.
 CONC. DRIVEWAY: 974 ± Sq. Ft.
 PRIVATE WALK: 37 ± Sq. Ft.
 PUBLIC WALK: 320 ± Sq. Ft.



1" = .
 LOT AREA: 29.
 LOT COVERAGE

LEGEND:

| | |
|---------|---------------|
| XOX | PROPOSED GRA |
| XOXAB | AS BUILT GRAD |
| --- | S.S.D. |
| --- | SU |
| --- | SA |
| --- | 6" |
| --- | PSL |
| --- | 6" |
| --- | ST |
| --- | 3/ |
| --- | WA |
| --- | SW |
| ● | SA |
| ○ | ST |
| D.&U.E. | DR. |
| B.S.L. | BU |

CONTRACTOR SHALL CUT 15" OFF OF LATERAL AND BEGIN FROM THAT POINT AND CONNECT TO HOUSE FOLLOWING PLOT PLAN.

ALL UNDERGROUND SEWERS AND UTILITIES SHOWN ARE PLOTTED BY SCALE FROM DESIGN PLANS FURNISHED BY ENGINEER THE ACTUAL FIELD LOCATION MAY VARY.



David J. St. Regis

NOTE: THIS DRAWING REPRESENTED AS A BOUNDARY SURVEY, SURVEYOR LOCATION

BENCHMARK
 TOP OF CURB=797.60

**LOT 19
 SADDLEBROOK
 SECTION ONE A**

INST. #2020-010176
 P.B. E., PG. #437 A-C
 ZONING: PUD

- 10' MINIMUM SIDE YARD
- 25' MINIMUM FRONT YARD
- 25' MINIMUM REAR YARD
- 40% MAXIMUM LOT COVERAGE

- SOD: 2,303 ± Sq. Ft.
- SEEDING: 23,899 ± Sq. Ft.
- CONC. DRIVEWAY: 810 ± Sq. Ft.
- PRIVATE WALK: 37 ± Sq. Ft.
- PUBLIC WALK: 244 ± Sq. Ft.



