

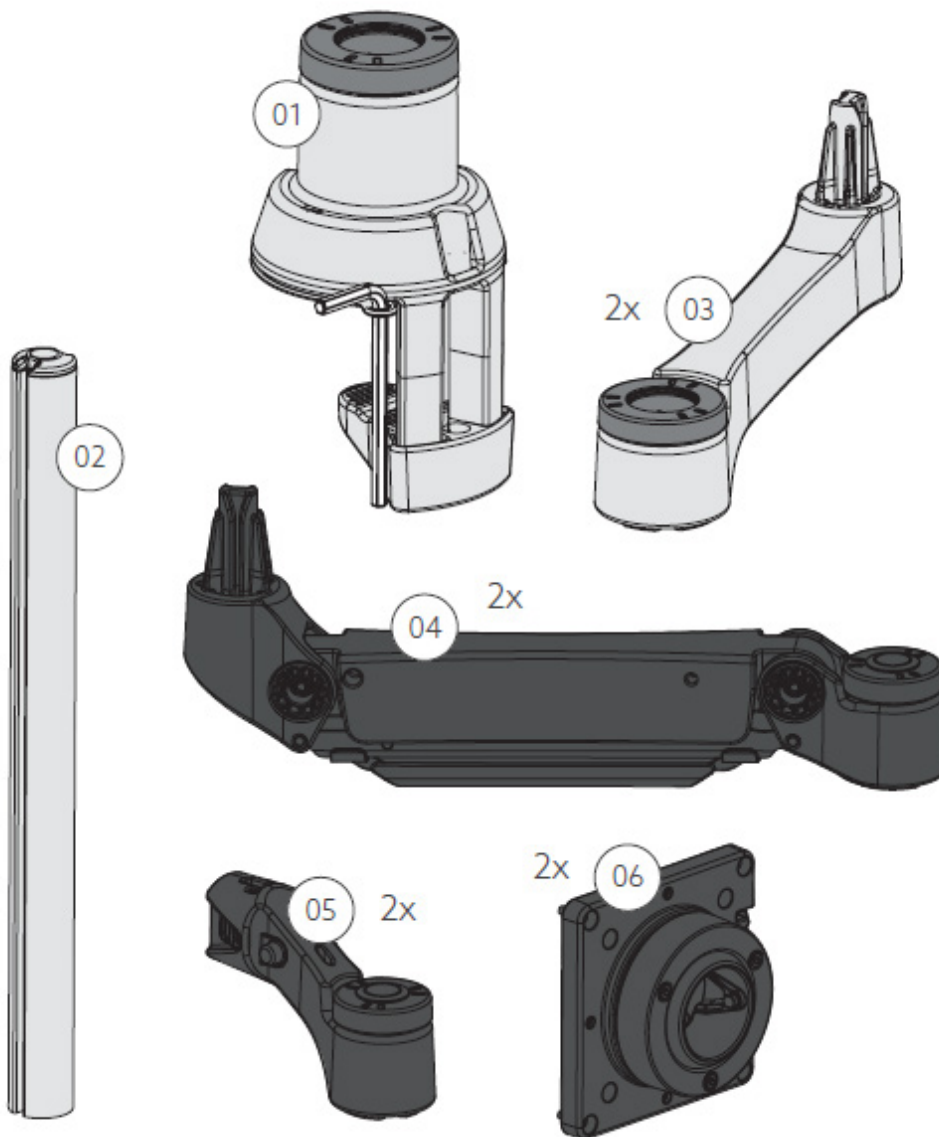


TOOLS REQUIRED:

A hex key is included with the monitor arm. For attaching the monitor arm base to the upright bracket, you will also need:

- 13 mm wrench

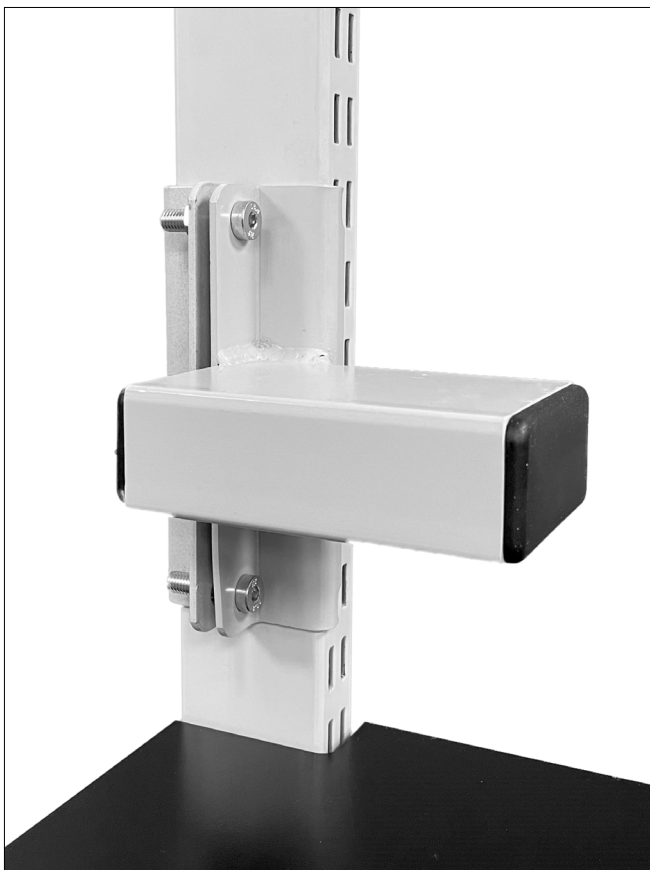
INCLUDED IN THE BOX:



STEP 1

Attach upright mounting bracket to slotted upright

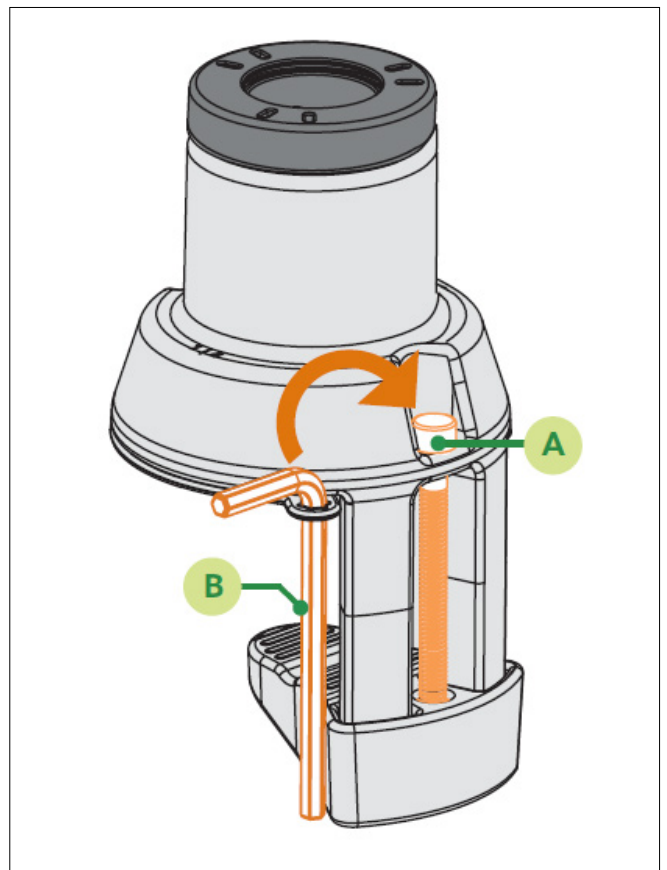
Insert mounting bracket clamps at desired upright height. Bracket can be attached in front of or behind the upright. Using provided M8 x 16 bolt and nut, tighten bracket to upright.



STEP 2

Mount monitor arm base to upright bracket

Slide the base onto the bracket. Tighten the screw (A) with the hex key (B).

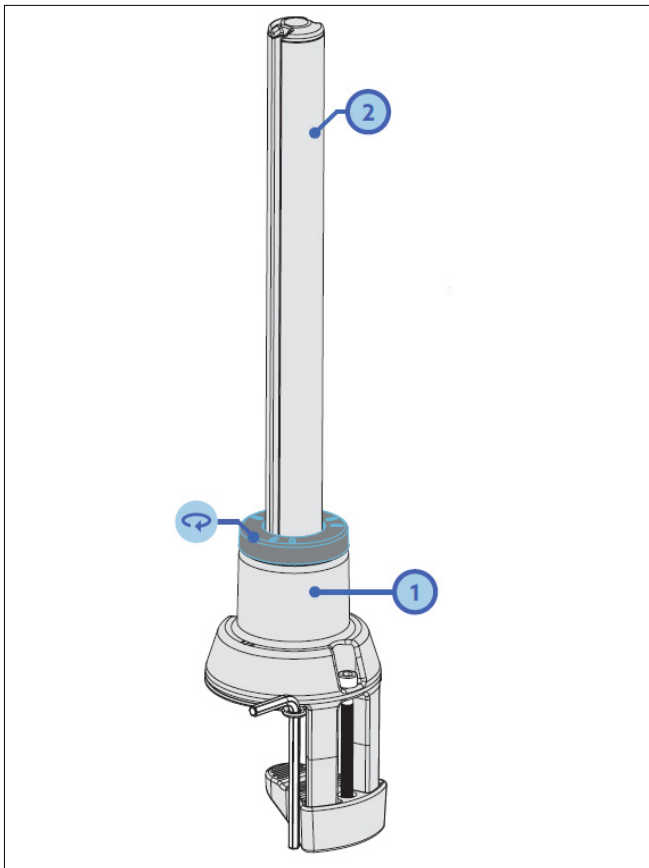


STEP 3

Assemble monitor arm

Insert the pole (2) into the base (1) until you hear it make contact with the upright bracket base.

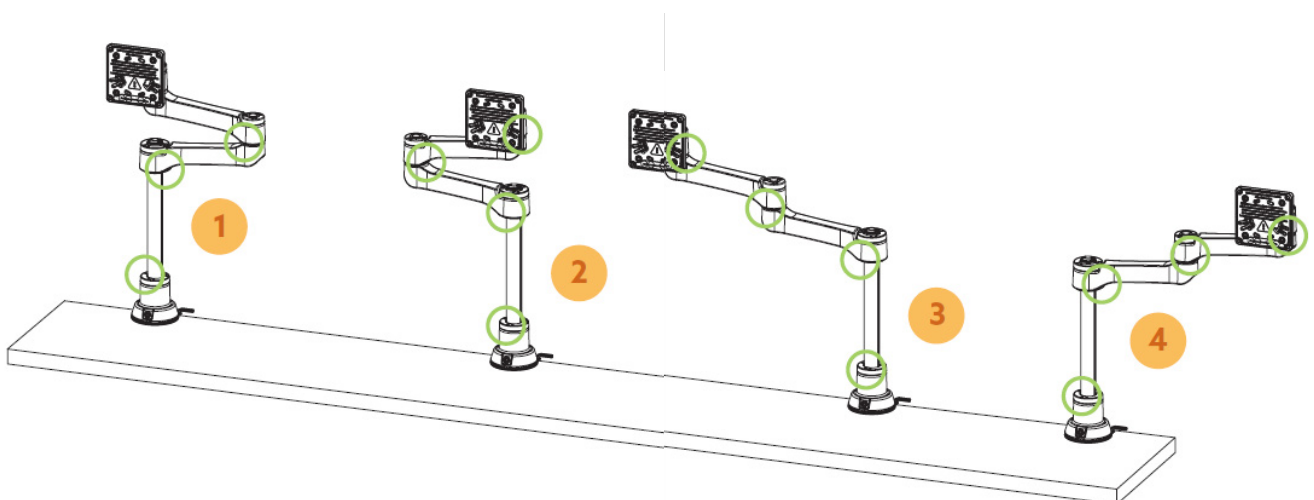
Keep the pole (2) pressed down while tightening the ring.



STEP 4

Create your own setup

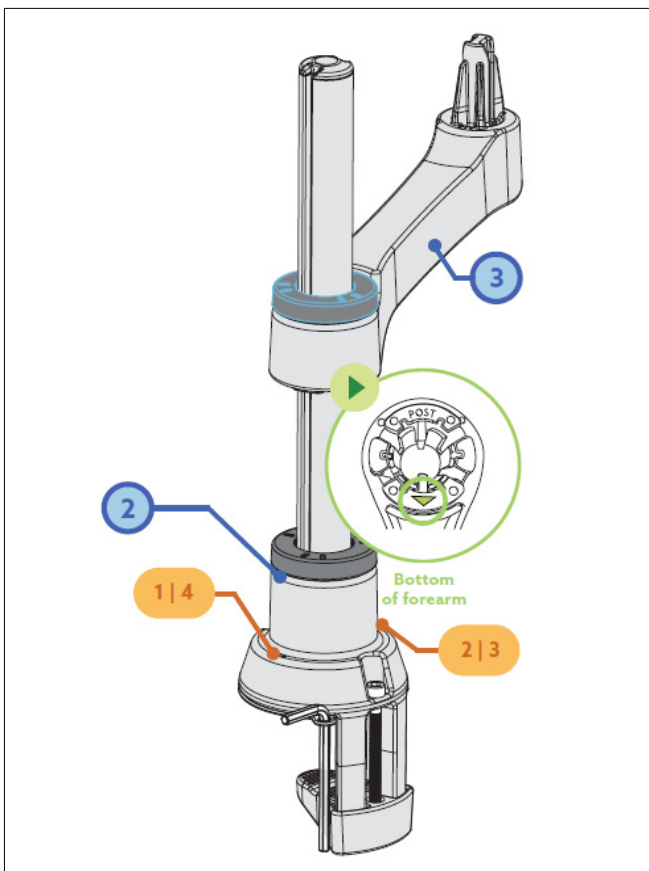
At the bottom of the ring there is a small arrow. This arrow indicates where the arm stops rotating. It is important to have the arrow on the correct side (left or right), so that the arm stops rotating and does not bump into other upright accessories (see image at bottom of page for setup examples).



STEP 5

Choose a setup (page 4) and add monitor arms

Please the forearm (3) on the pole (2). Make sure the arrow points in the direction of the number of your chosen set up. See numbers on the base (**114** or **213**).

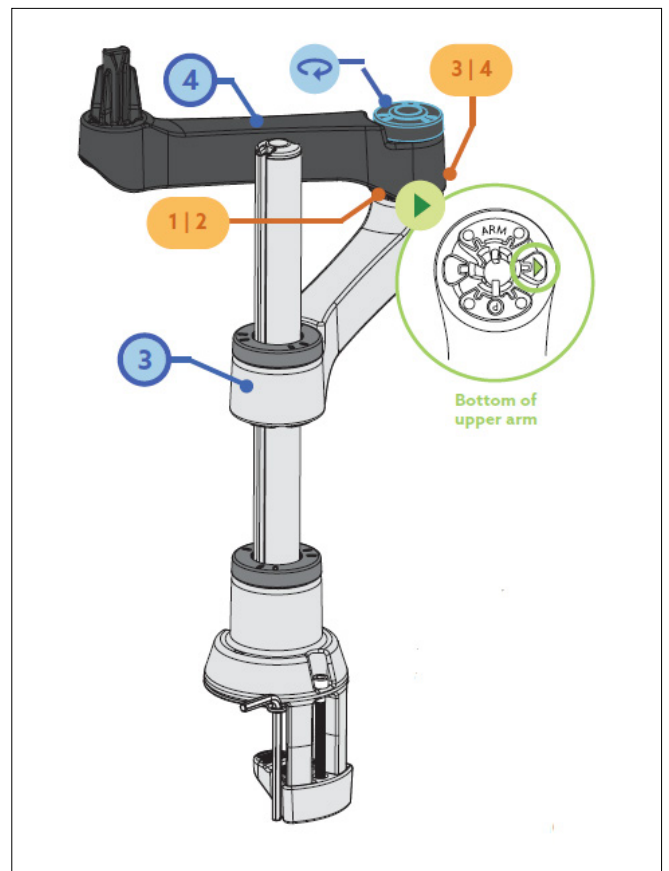


STEP 6

Add upper arm

Place the upper arm (4) on the forearm (3). While doing so, make sure that the arrow points in the direction of the number of your chosen setup. See numbers on the base (**114** or **213**).

Push the upper arm (4) down while tightening the ring.

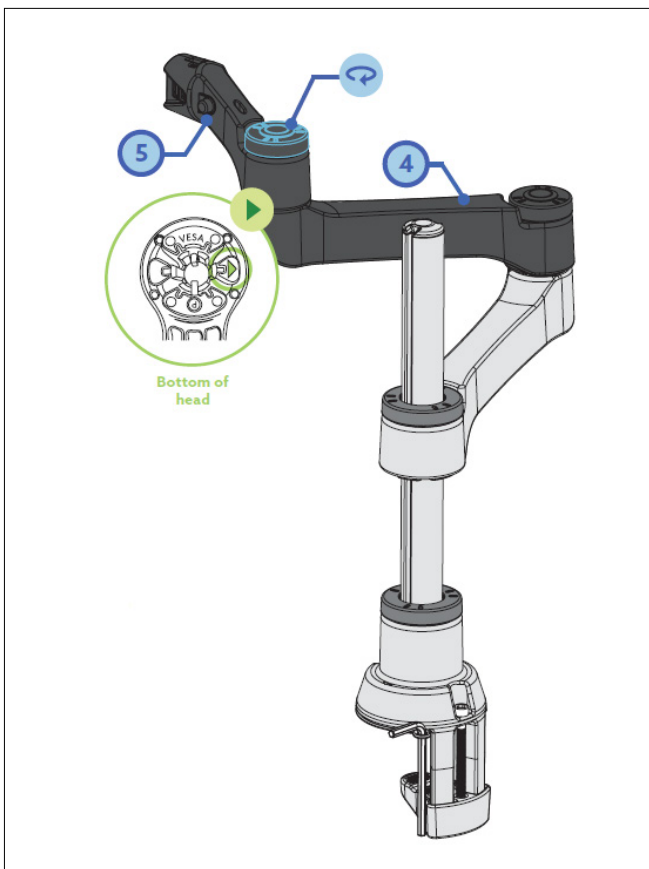


STEP 7

Attach arm head

Place the head (5) on the upper arm (4). Make sure that the arrow points in the direction of the arrow on the upper arm.

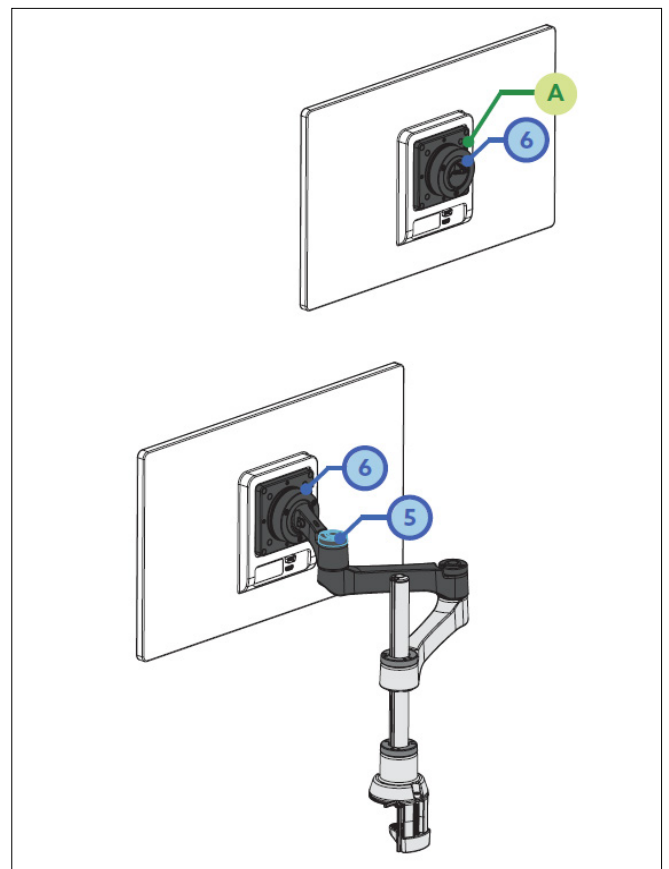
Press the head (5) down while tightening the ring.



STEP 8

Attach monitor

Attach the VESA plate (6) to the monitor using the enclosed hexagonal screws (see VESA plate). Use the enclosed hex key (A) to do this. Click the VESA plate (6) onto the head (5).

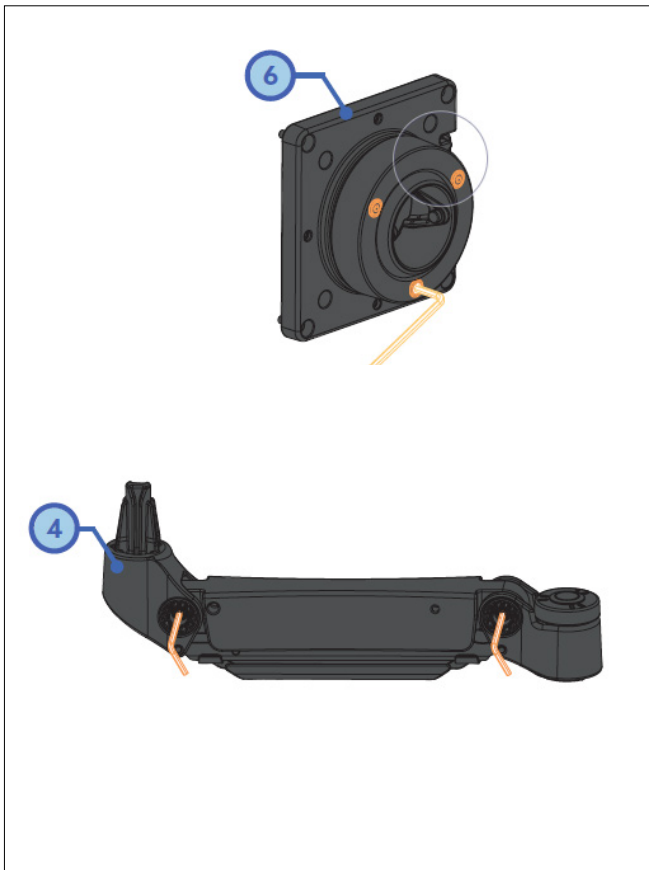


STEP 9

Adjust resistance

In order to straighten the monitor, you will find 3 screws at the back of the VESA plate (6). The screws can be tightened with the enclosed hex key, so you can increase the resistance and straighten the monitor.

Depending on the weight of your monitor, you can increase or decrease the resistance of the gas spring arm (upper arm (4)) by tightening the hexagonal screws. Use the enclosed allen key.



STEP 10

Adding a second monitor arm

Install the first arm following steps 2-9 and follow steps 5-9 to install the extra arm.

