

# LAUE-COS

Single Crystal Orientation Measurement System



TECHNOLOGY  
THAT DELIVERS  
ACCURATE RESULTS™

For Research Labs and  
Production Environments

PROTO

# LAUE-COS

## unique features and options

- 150 mm x 100 mm back reflection camera
- X,Y Stages for automated mapping
- Manual goniometers and adapters for saw cutting of crystals
- Automated goniometers with chi, psi and phi rotation



### 2<sup>ND</sup> GENERATION BACK REFLECTION CAMERA

Low noise, high dynamic range cooled sensor technology for sharp Laue images.



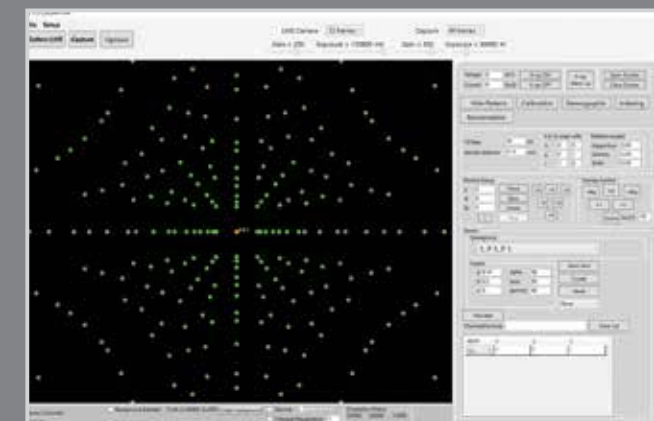
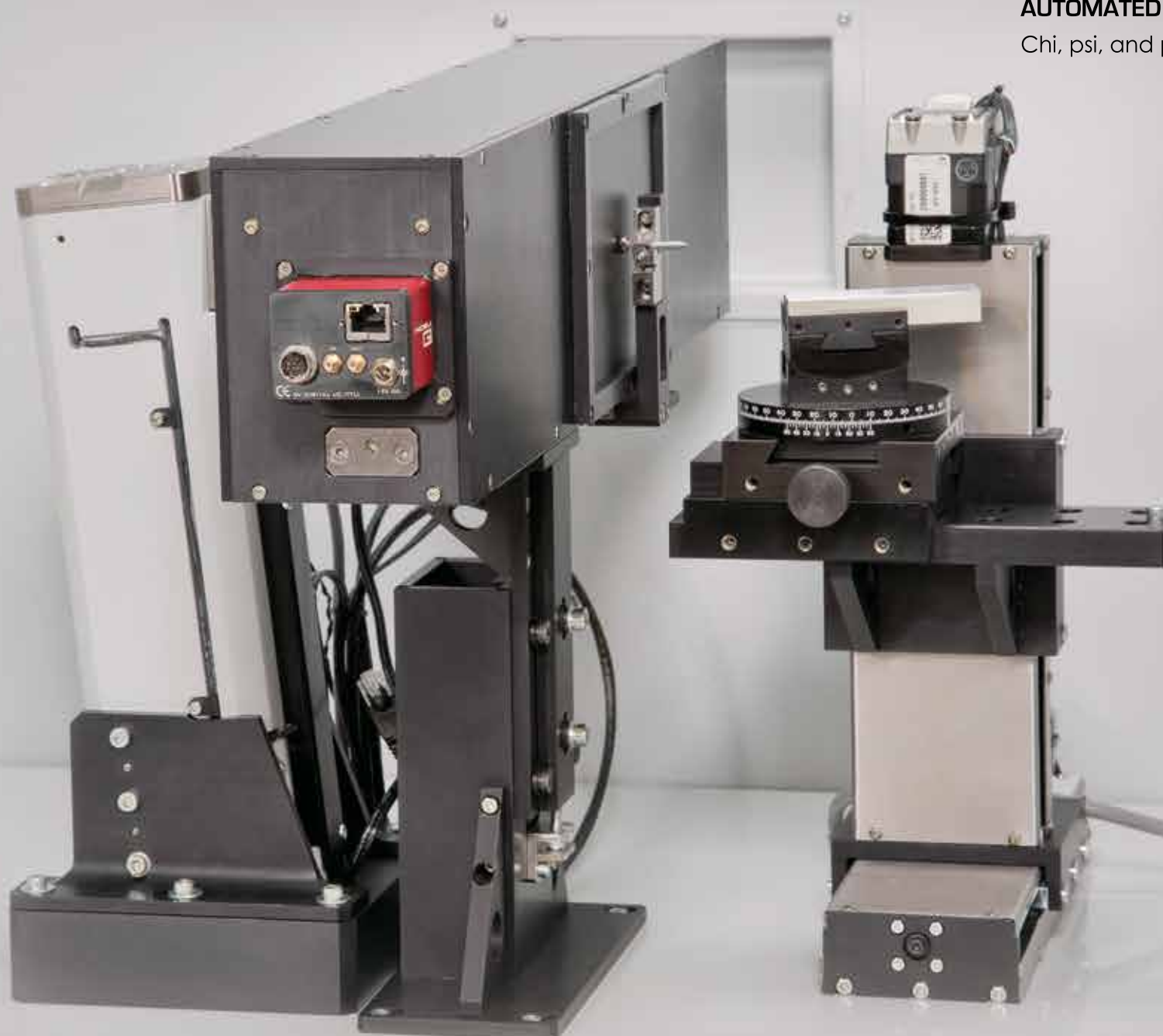
### AUTOMATED GONIOMETER

Chi, psi, and phi rotation.



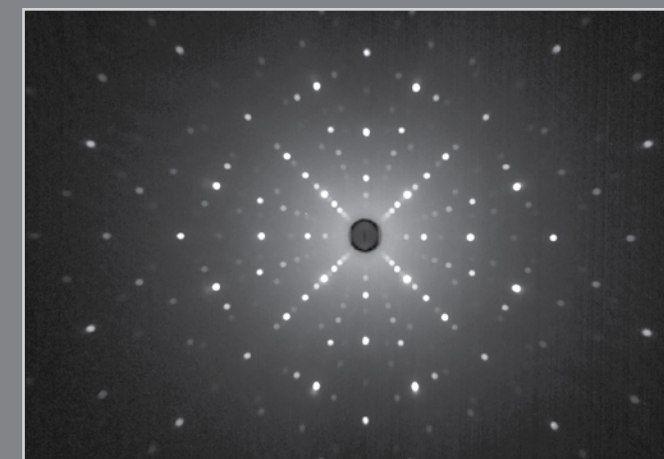
### X-RAY TUBE

Our Tungsten x-ray tube is produced in-house to provide you with the best quality, performance, warranty and support.



### XRDWIN 2.0 LAUE SOFTWARE

Our XRDWIN 2.0 Laue software is designed for both operating our single crystal Laue orientation systems and data analysis of Laue patterns. Standard features include a comprehensive set of tools for analyzing patterns, indexing and reorienting crystals.



### CUSTOMIZATION

We understand that project requirements often require custom system specifications. Our team can customize your Laue system with various features and accessories to meet all your project needs.

#### AVAILABLE OPTIONS:

- Side-reflection, back-reflection and transmission geometries
- Automated 3-axis goniometers
- Manual or automated X, Y, or Z axis for sample positioning

## MAIN OFFICES

### USA

PROTO Manufacturing Inc.  
12350 Universal Drive  
Taylor, Michigan  
48180-4070  
Tel 1-734-946-0974  
info@protoxrd.com

### CANADA

PROTO Manufacturing Ltd.  
2175 Solar Crescent  
Oldcastle, Ontario  
N0R 1L0  
Tel 1-519-737-6330  
protocanada@protoxrd.com

### JAPAN

PROTO Manufacturing K.K.  
3-1-22-402 Nishi Inazawa  
Aichi  
492-8218  
Tel +81 587-81-6531  
info@protoxrd.jp

## SALES & SERVICE CENTERS

### CHINA

EPCO Test Tech LTD  
B2301 Tomson Center  
188 Zhangyang Rd.  
Pudong, Shanghai, 200120  
Tel +86 21 38870960  
sales@epco.com.cn

### INDIA

Elico Marketing PVT. LTD  
57, Phase-V, Near Telephone Exchange  
KPHB, Kukatpally, Hyderabad  
500 072  
Tel +91 40 2315 3322, 2315 3388  
info@elicomarketing.com

### EUROPE

METLAB - PROTO EUROPE  
ul. Ibn Siny Awicenny 14  
Wroclaw, Poland  
54-611  
Tel +48 (885) 200 993  
protoeurope@protoxrd.com

Dimensions (L x W x H)	1000 mm x 660 mm x 1900 mm (39 x 26 x 75 in)
Power Requirements	200-240V, 30 Amp, 50/60Hz, Single Phase
X-Ray Tube	Tungsten (W)
X-Ray Power Supply	1200 W (40 kV / 30 mA)
Geometry	back-reflection, standard focus distance of 30 mm, optional transmission camera
X-ray Camera	150 x 100 mm cooled sensor technology
Sample Positioning	manual or automated X, Y axis (100 mm), optional mapping, Z axis manual (100 mm)
Goniometers	manual or automated 3-axis
X-ray Beam Apertures	0.5, 0.8, 1.0, 1.2 mm
Computer	desktop computer included
Software	PROTO XRDWIN 2.0 Laue
System Compliance	ANSI N43.2, CE, ASTM E82
Proto Manufacturing engages in continuous research and development, therefore specifications in this publication are subject to change. Please call for details. Various items and methods in this brochure are covered by patents or patents pending.	

# PROTO

www.protoxrd.com

TECHNOLOGY THAT DELIVERS  
ACCURATE RESULTS™