



General Features

- ◆ Sealed and maintenance free operation.
- ◆ Non-Spillable construction design.
- ◆ ABS containers and covers(UL94HB, UL94V-0) optional.
- ◆ Safety valve installation for explosion proof.
- ◆ High quality and high reliability.
- ◆ Exceptional deep discharge recovery performance.
- ◆ Low self discharge characteristic.
- ◆ Flexibility design for multiple install positions.



Battery Type	Valve-Regulated, Absorbed Glass Mat (AGM) Technology			
Nominal Voltage	2V			
Capacity(20°C)	20HR(157.3A, 1.8V/cell)	10HR(291A, 1.80V)	5HR(506.3A, 1.75V)	1HR(1795.5A, 1.60V)
	3146AH	2910AH	2531.5AH	1795.5AH
Dimensions	Length	Width	Height	Total Height
	474mm(18.66inches)	323mm(12.72inches)	621mm(24.45inches)	651mm(25.63inches)
Approx Weight	Approx 210.0 kg (463.0lbs)			
Internal Resistance	Full Charged at 20°C : Approx 0.2mΩ			
Self Discharge	3% of capacity declined per month at 20°C			
Capacity affected by Temperature(10HR)	40°C	25°C	0°C	-15°C
	103%	100%	86%	65%
Charging Voltage (V)	Cycle use		Float use	
	2.4V~2.5V at 20°C. Temp. Coefficient -5mV/°C		2.25V~2.3V at 20 °C.Temp. Coefficient (-3mV/°C)	
Current	Max. Discharge Current		Initial Charging Current	
	24000A		Less than 900.0A	
Operating Temp. Range	Discharge		Charging	Storage
	-15~50°C (5~122°F)		0~40°C (32~104°F)	-15~40°C (5~104°F)

Constant Current Discharge (Amperes) at 20 °C (68°F)

F.V/Time	30min	45min	1h	2h	3h	4h	5h	6h	8h	10h	20h
1.85V/cell	2023.5	1577.0	1373.7	908.6	676.8	554.4	466.6	412.7	331.4	281.7	151.9
1.80V/cell	2205.9	1694.8	1462.1	979.2	727.7	589.7	494.8	437.5	348.5	291.0	157.3
1.75V/cell	2394.0	1846.8	1587.5	1018.1	756.5	609.8	506.3	451.1	360.5	301.8	161.2
1.70V/cell	2610.6	1995.0	1684.4	1071.4	795.8	637.2	535.1	472.9	375.4	313.4	165.3
1.65V/cell	2753.1	2105.2	1741.4	1108.8	828.5	662.4	551.8	489.4	388.1	322.1	170.5
1.60V/cell	2952.6	2188.8	1795.5	1141.9	849.6	676.8	565.6	499.6	395.0	328.8	173.3

Constant Power Discharge (Watts) at 20 °C (68°F)

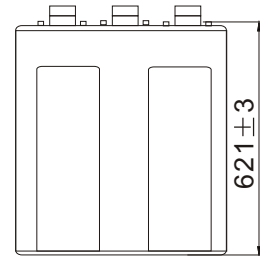
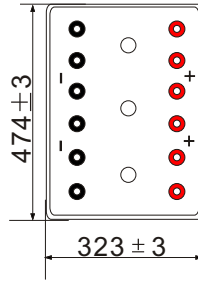
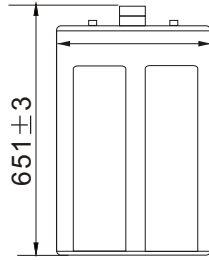
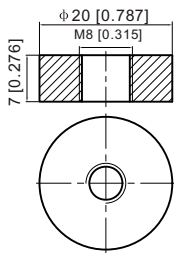
F.V/Time	30min	45min	1h	2h	3h	4h	5h	6h	8h	10h	20h
1.85V/cell	3927.6	3086.5	2697.8	1796.4	1343.0	1103.4	931.0	825.9	665.9	567.3	306.2
1.80V/cell	4217.2	3291.6	2856.3	1923.1	1435.9	1167.4	982.8	871.9	698.2	585.2	316.6
1.75V/cell	4539.7	3553.2	3087.3	1992.2	1486.9	1203.2	1002.3	896.2	720.6	606.1	324.1
1.70V/cell	4923.6	3824.4	3265.4	2092.2	1561.4	1254.8	1057.6	938.2	749.7	629.1	332.1
1.65V/cell	5150.5	3999.9	3352.1	2152.8	1618.6	1299.6	1087.0	968.0	773.1	645.6	342.2
1.60V/cell	5485.9	4136.8	3438.4	2206.6	1652.5	1323.8	1110.4	985.1	785.3	657.9	347.3



Dimensions

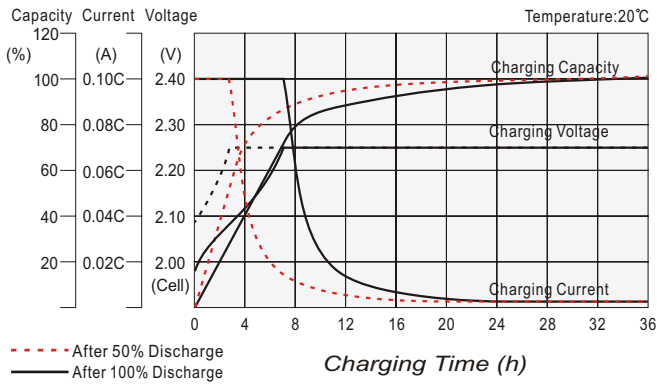
T11 Terminal

Unit: mm [inches]

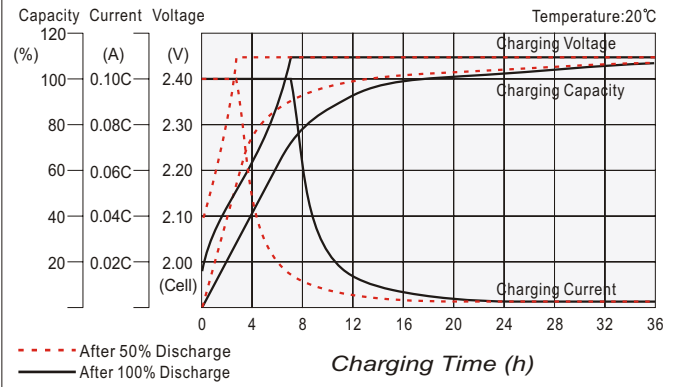


Torque: 11~14.7N*M

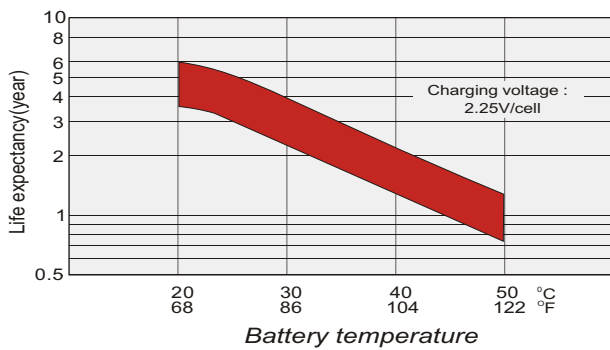
Float charging characteristics



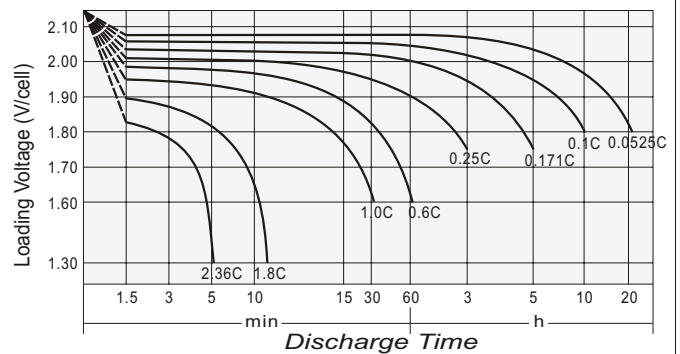
Cycle use charging characteristics



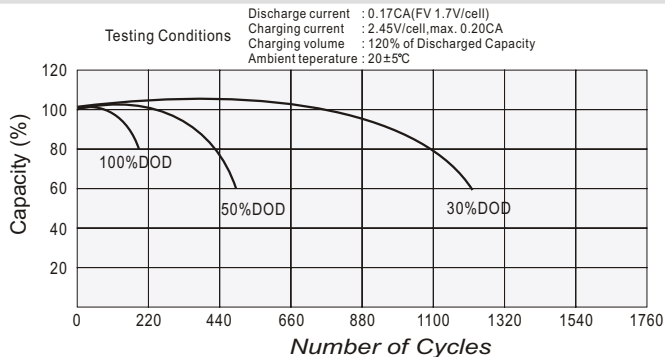
Effect of Temperature on Long Term Float Life



Discharge characteristics



Cycle Life in Relation to Depth of Discharge



Self Discharge Characteristics

