

# AFINIA LABEL<sup>®</sup>

## L501 LABEL PRINTER

## Quick Setup and Installation Guide

For more detailed information, please refer to the **User Guide** installed on your PC.

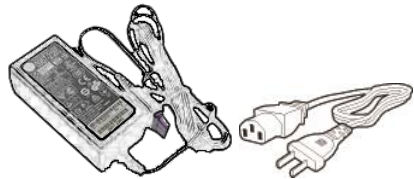
### Unpack:



Click to view the [Setup and Installation video](#)



- 4 aerosol absorbing pads

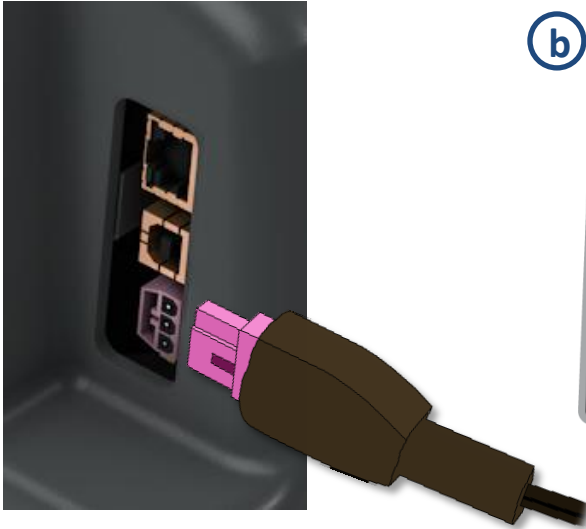


### 1 Remove Tape



## 2 Connect Power

(a)



(b)



---

## 3 Install Ink Cartridges

(a)

Open Ink Cartridge Access Door

(b)

Remove cartridges from packaging

(c)

Press each cartridge into the correct slot until it clicks

Left to right: **C – M – Y – K**

(d)

Close Ink Cartridge Access Door

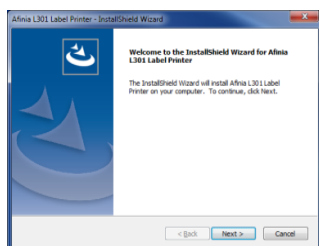


## 4 Install Printer (USB connection)

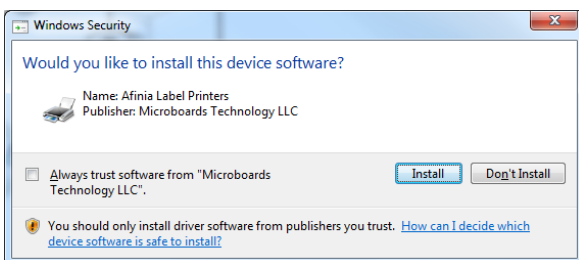
For network connection, please see User Manual

- (a) Download Installer from  
<http://afinialabel.com/L501info>

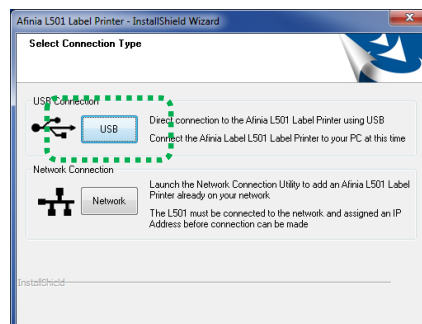
- (b) Run Installer



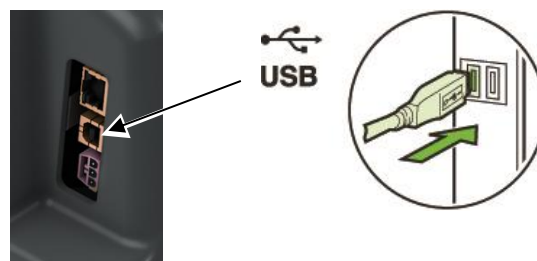
- (c) Click **Install** (will see this 3 times)



- (d) Click **USB** button

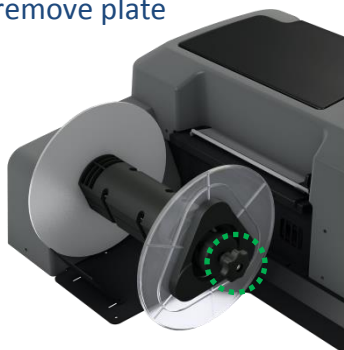


- (e) Connect printer to PC



## 5 Load Media

- (a) Loosen Mandrel Knob and remove plate



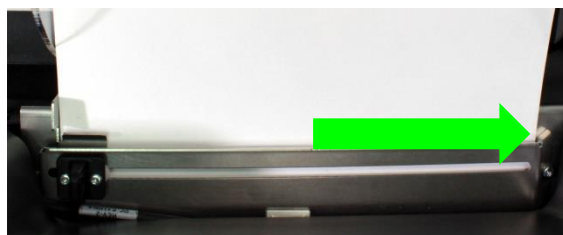
- (b) Slide roll onto mandrel up to the fixed plate



- (c) Replace removable plate and tighten mandrel knob



- (d) Insert stock into input slot under label guide and against right side



Push stock in until auto-feed begins,  
then adjust Paper Guide

## Troubleshooting



### If the L501 Label **Printer isn't printing** :

- Check for error messages on the control panel
- Verify selected media matches loaded media type
- Verify job sent to correct printer



### If stock won't load:

- Wait until printer is initialized or idle; media LED will be blinking once a second when ready
- If media LED is blinking rapidly, press **Unload** button and try again
- Unwind more slack from label roll and try again



### If the print position on the label is not correct:



- Watch the [L501 Adjusting Print Position video](#)

- or -

- See "Adjusting Alignment for Printing" on page 23 of the User's Manual



- Verify you have the [correct label size selected](#)

### If the label size you need isn't available:



- Watch the [L501 Custom Label Size video](#)

- or -

- See "Creating Custom Label Sizes" on page 25 of the User's Manual



**See all Technical Videos for the L501 Label Printer at**

**<http://afinialabel.com/L501info/videos>**

For technical questions or support issues, contact Afinia Label Technical Support:

PH: 952-279-2643

[support@afinia.com](mailto:support@afinia.com)

[www.afinialabel.com/support](http://www.afinialabel.com/support)

Please have the Serial Number of your Afinia Label L501 Label Printer available when contacting Technical Support.