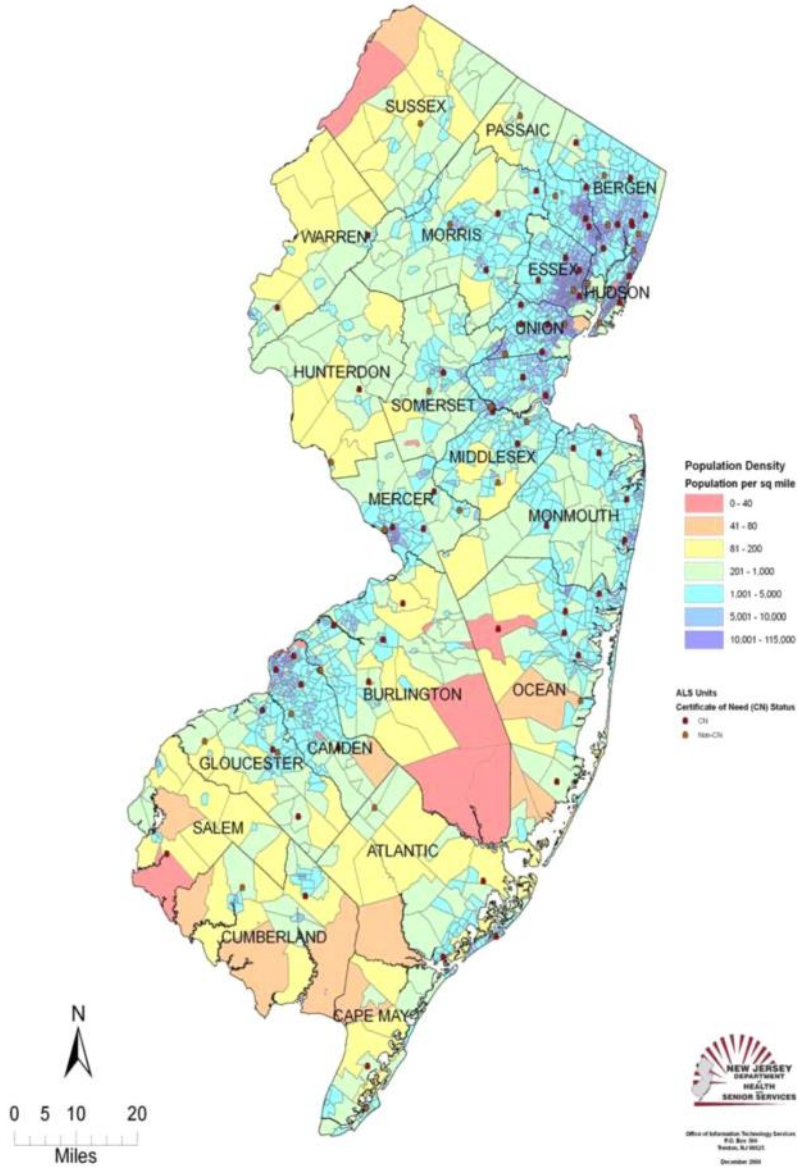


Printout

Thursday, June 29, 2017 4:53 PM

Figure 24: New Jersey ALS Location Map



New Jersey has structured its ALS project to operate based on a “certificate of need.” At the time of designations, programs had to show a need for ALS. Every municipality was assigned an ALS unit. They are required to show not only a need for ALS, but how they will provide coverage for surrounding communities that may not be guaranteed ALS coverage. Only

TABLE 1
MICU Project Areas and Related Characteristics

As of 8/31/78

PROJECT	SERVICE AREA		TYPE OF AREA	CENTRAL DISPATCH	HOSPITALS		BASIC LIFE SUPPORT		MICU VEHICLE	ADMINISTRATIVE CONTROL BY
	POP.	MILES			CONTROL	REC.	SQUADS	VEHICLES		
Burlington	250K	380	RURAL	YES	1	4	24	50	1	Hospital
Elizabeth	115K	8	URBAN	YES	1	2	1	3	1	Non-Hospital
Hackensack	55K	5	URBAN	NO	1	0	1	3	2	Non-Hospital
Jersey City	250K	13	URBAN	NO	1	2	1	3	1	Hospital
Mercer	320K	200	URBAN/RURAL	NO	5	0	18	54	10	Non-Hospital
New Brunswick	50K	6	URBAN	NO	1	1	1	-	-	Non-Hospital
Overlook	300K	88	URBAN	NO	1	3	20	34	2	Hospital
Underwood	103K	260	RURAL	NO	1	1	30	38	1	Hospital
West Jersey	485K	220	URBAN/RURAL	YES	1	9	28	82	3	Hospital
TOTAL	1,948K	1,179	-	-	13	22	424	271	21	-