



### General Features

- ◆ Sealed and maintenance free operation.
- ◆ Non-Spillable construction design.
- ◆ ABS containers and covers(UL94HB, UL94V-0) optional.
- ◆ Safety valve installation for explosion proof.
- ◆ High quality and high reliability.
- ◆ Exceptional deep discharge recovery performance.
- ◆ Low self discharge characteristic.
- ◆ Flexibility design for multiple install positions.



Battery Type	Valve-Regulated, Absorbed Glass Mat (AGM) Technology			
Nominal Voltage	2V			
Capacity(20°C)	20HR(13.0A, 1.8V/cell)	10HR(24.3A, 1.80V)	5HR(41.8A, 1.75V)	1HR(147.3A, 1.60V)
	260.0AH	243.0AH	209.0AH	147.3AH
Dimensions	Length	Width	Height	Total Height
	170mm(6.69inches)	110mm(4.33inches)	328mm(12.9inches)	350mm(13.8inches)
Approx Weight	Approx 15.8 kg (35.8lbs)			
Internal Resistance	Full Charged at 20°C : Approx 1.0mΩ			
Self Discharge	3% of capacity declined per month at 20°C			
Capacity affected by Temperature(10HR)	40°C	25°C	0°C	-15°C
	103%	100%	86%	65%
Charging Voltage (V)	Cycle use		Float use	
	2.4V~2.5V at 20°C. Temp. Coefficient -5mV/°C		2.25V~2.3V at 20°C. Temp. Coefficient (-3mV/°C)	
Current	Max. Discharge Current		Initial Charging Current	
	2000A		Less than 75.0A	
Operating Temp. Range	Discharge		Charging	
	-15~50°C (5~122°F)		0~40°C (32~104°F)	
	Storage			
			-15~40°C (5~104°F)	

### Constant Current Discharge (Amperes) at 20 °C (68°F)

F.V/Time	10min	15min	20min	30min	45min	1h	2h	3h	4h	5h	6h	8h	10h	20h
1.85V/cell	277.9	233.7	207.3	172.0	132.7	113.5	74.3	55.8	45.8	38.5	34.1	27.3	23.5	12.5
1.80V/cell	318.0	262.4	229.2	186.8	143.1	119.8	79.8	60.0	48.6	40.8	36.1	28.8	24.3	13.0
1.75V/cell	361.1	295.8	253.3	202.9	156.1	130.6	83.0	62.4	50.3	41.8	37.2	29.7	24.9	13.3
1.70V/cell	407.9	328.1	279.6	221.6	168.2	138.2	87.5	65.7	52.6	44.2	39.0	31.0	25.9	13.6
1.65V/cell	438.0	351.3	297.5	233.8	178.0	143.0	90.7	68.3	54.6	45.6	40.4	32.0	26.6	14.1
1.60V/cell	\	384.8	323.2	249.5	184.9	147.3	93.0	70.1	55.8	46.7	41.2	32.6	27.1	14.3

### Constant Power Discharge (Watts) at 20 °C (68°F)

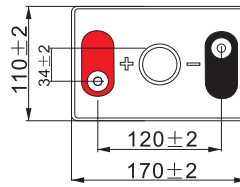
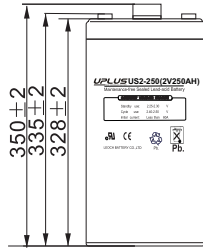
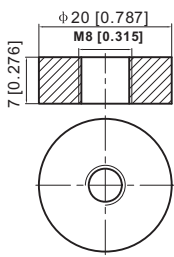
F.V/Time	10min	15min	20min	30min	45min	1h	2h	3h	4h	5h	6h	8h	10h	20h
1.85V/cell	518.8	440.8	395.0	331.2	257.7	221.2	145.7	110.0	90.4	76.2	67.7	54.5	47.0	25.1
1.80V/cell	586.8	488.4	430.3	354.2	275.8	232.3	155.6	117.5	95.5	80.4	71.4	57.2	48.4	25.9
1.75V/cell	655.9	543.7	471.1	381.8	298.0	252.1	161.2	121.7	98.5	82.0	73.4	59.0	49.6	26.5
1.70V/cell	724.1	594.9	516.1	414.6	319.8	265.9	169.5	127.9	102.7	86.6	76.8	61.4	51.5	27.2
1.65V/cell	770.6	632.1	545.0	433.9	335.5	273.1	174.7	132.5	106.4	89.0	79.3	63.3	52.9	28.0
1.60V/cell	\	681.0	585.7	459.8	346.8	279.8	178.3	135.3	108.4	90.9	80.7	64.3	53.9	28.4



# Dimensions

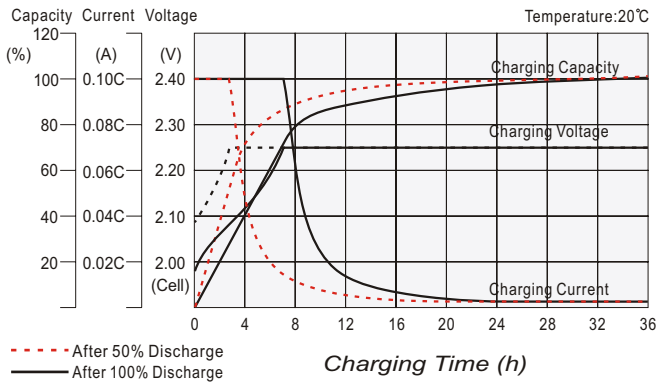
## T11 Terminal

Unit: mm [inches]

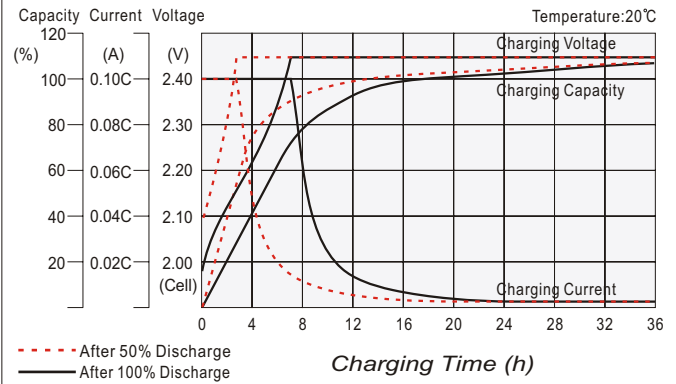


Torque: 11~14.7N\*M

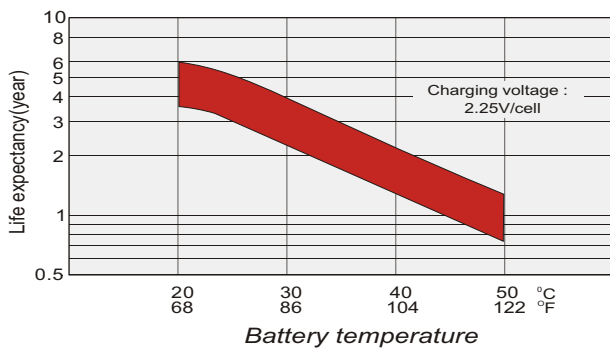
## Float charging characteristics



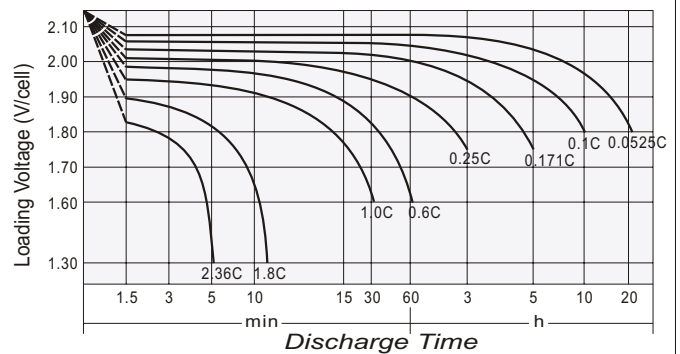
## Cycle use charging characteristics



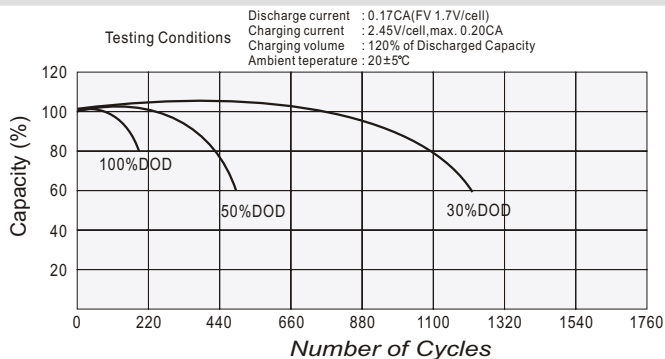
## Effect of Temperature on Long Term Float Life



## Discharge characteristics



## Cycle Life in Relation to Depth of Discharge



## Self Discharge Characteristics

