

AVGVSTO 6 ELECTRIC DOME OVEN

2CT3E25B



Main Features

- Fits 6 x 33cm pizzas
- Patented AIR TRAP SYSTEM delivers upto 30% energy saving
- Cooking chamber entirely lined with refractory ceramic
- Rockwool thermal insulation for high temperatures
- Reaches maximum temp. of 500°C in 90 minutes
- Independent adjustment of the temperature of the oven top and bottom with dual probe
- Independent adjustment of the power of the oven top and bottom (scale 0-100%)
- LED interior lighting
- Thermal insulation for high temperatures
- 45 cm antiqued black granite support surface
- Painted base, mounted on wheels or feet
- Can be dismantled in 5 macro-pieces for ease of installation
- Concealable electromechanical control panel
- Customisable dome colours
- 15cm diameter fitting prepared for an easy connection to the central suction system



SPECIFICATIONS

Voltage	Current at 400Vac 3N 50/60Hz - 21 Amps
Max Power	14400 Watts
Avg Power	7200 Watts
Plug Supplied	No, lead only
Weight	455 kg
Refractory Floor thickness	3cm
Capacity	6 x 34cm Pizza
Exhaust Pipe	150mm
Thermostat	500°C
Ambient Temp	0-40°C
Max Humidity	95% without condensation
Warrenty	4 Year Warranty (2 yr Labour 4 yr Parts)

AIR TRAP SYSTEM® is a patented technology that creates an air barrier right before the mouth of the oven and keeps the heat inside the cooking chamber.

Advantages of Air Trap System
 Energy saving -20% lower power consumption for a daily production cycle of 8 hours

- Up to 30% lower power consumption for a daily production cycle of more than 8 hours
- Superbly even baking, guaranteed even close to the mouth of the oven

working ergonomics at the top, eliminating the excessive heat that surrounds the pizza maker

ACCESORIES

Base closed on 3 sides
 Retractable Rack for Peels with Tools
 Dome colour customizable upon order:
 RED, BLUE, GOLD*
 Unpainted white dome, customizable by the client

DIMENTIONS

External Width	1620mm	Internal Width	1040mm
External Depth	1800mm	Internal Depth	710mm
External Height	2160mm	Internal Height	125mm

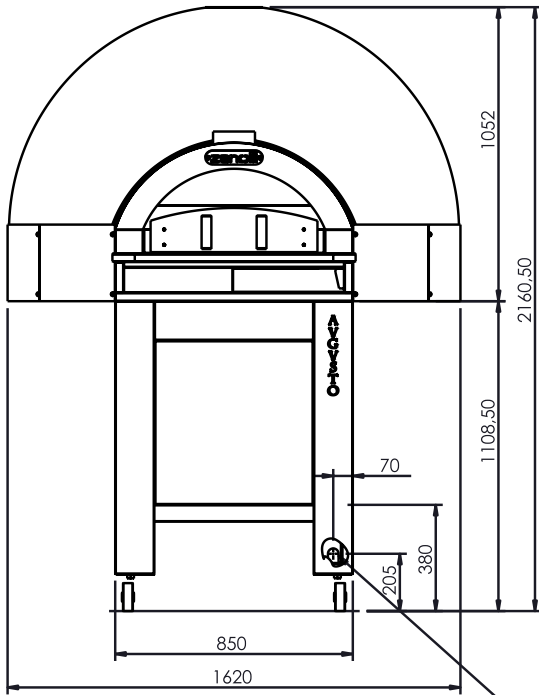


Phone: 1800 183 818 Email: support@thegoodlady.com.au
 Website: www.thegoodlady.com.au

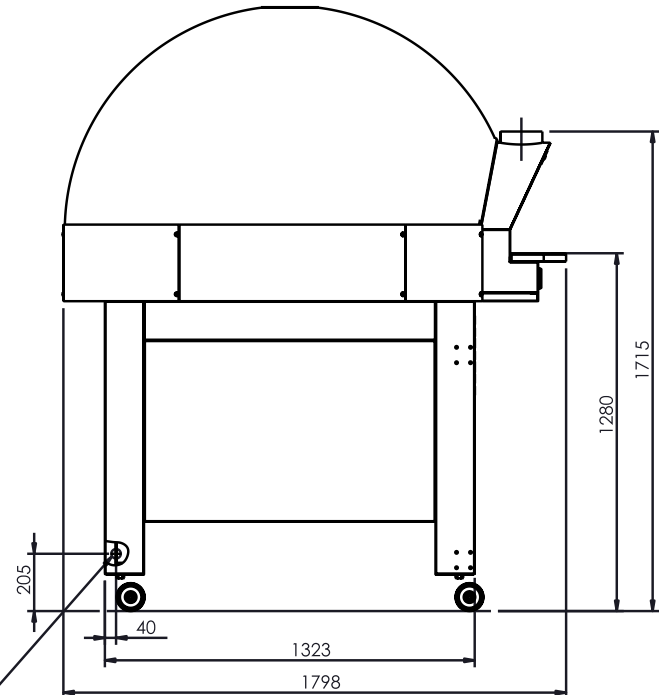
AUGUSTO 6 ELECTRIC DOME OVEN

AVGVSTO

FRONT

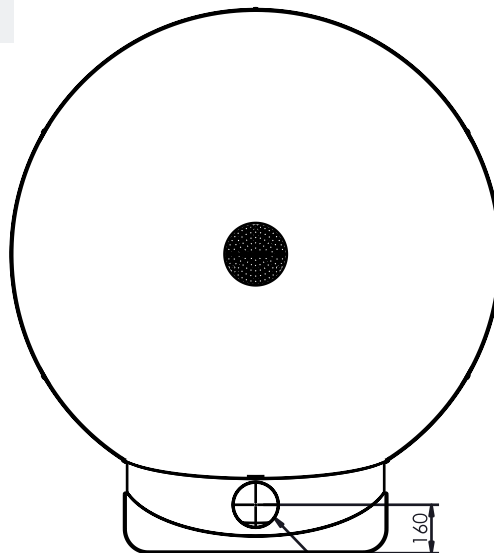


SIDE



ingresso alimentazione
elettrica / power supply entry

TOP



scarico vapori \varnothing 150mm /
exhaust water vapor \varnothing 150mm

	Potenza / Power
AUGUSTO 6 EL.	14.4 kW

We reserve the right to alter specifications without notice.



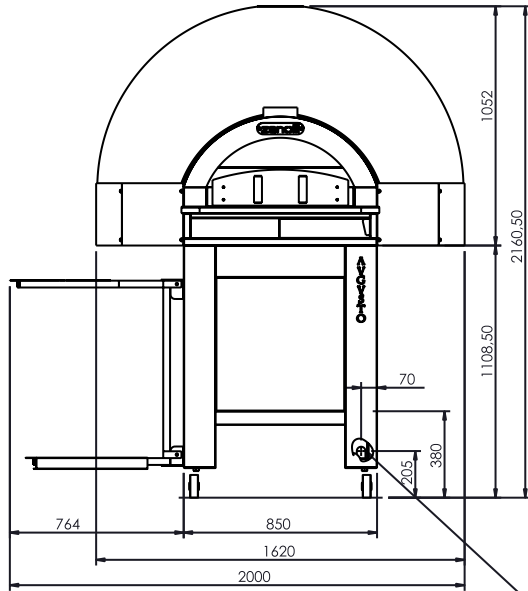
THE
GOOD
LADY

Phone: 1800 183 818 Email: support@thegoodlady.com.au
Website: www.thegoodlady.com.au

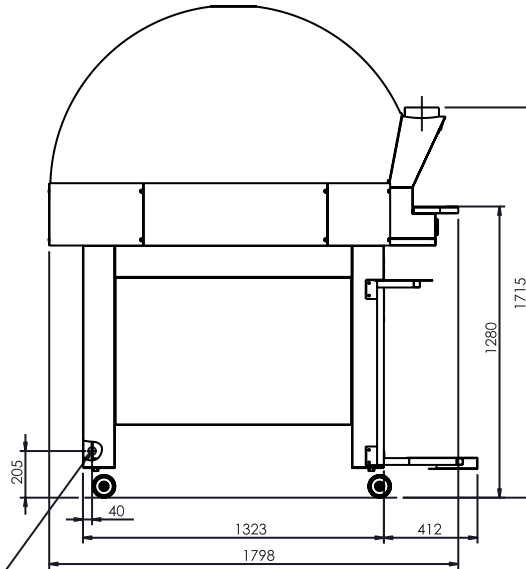
AUGUSTO 6 ELECTRIC DOME OVEN

AVGVSTO

FRONT

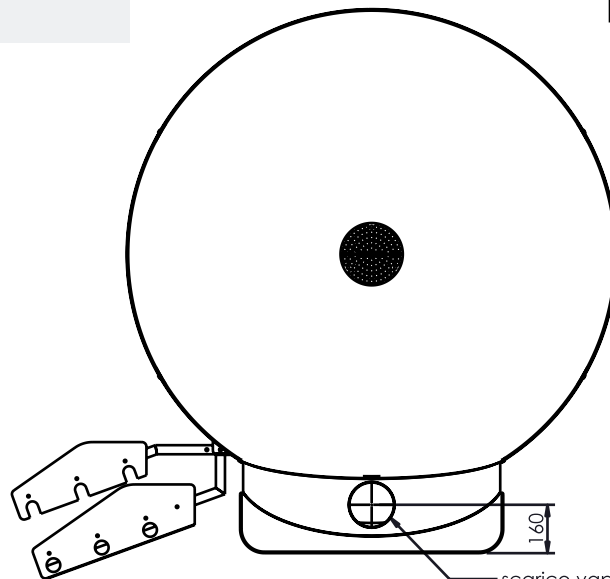


SIDE



ingresso alimentazione elettrica / power supply entry

TOP



scarico vapori Ø 150mm / exhaust water vapor Ø 150mm

	Potenza / Power
AUGUSTO 6 EL.	14.4 kW

We reserve the right to alter specifications without notice.



THE
GOOD
LADY

Phone: 1800 183 818 Email: support@thegoodlady.com.au
Website: www.thegoodlady.com.au