

SPECTER
OBSERVER
ROMAIN
CURVETO

Specimen

Specter Roman
(BETA 2017)

Example

S 80 pt
L auto
T -100

Typeface

Releasing year 2017
122 Glyphs, 1 weight

Information

OpenType format
Basic Latin MacRoman

Licensing

Contact Designer

Project Information

Specter is a extreme display typeface based on the work by Jan van Krimpen. The project began with the idea to create a serif typeface for small sizes. With this idea in mind, I started a study on the work of Jan van Krimpen. This took me to the Meermanno museum, researching original drawings of the Romulus. During some interpretations sketches, the sharp serif's came out. It ended up as Specter, instead of small sizes the final form should be used for display. Specter is available for licensing.

Specter is the result of a Letterstudio module at the Royal Academy of Art (KABK) in The Hague. Thanks to Peter Verheul and the Meermanno museum.

SWISS

SWISS

SWISS

SWISS

SWISS

Specimen

Specter Roman
(BETA 2017)

SWISS

Example

S 80 pt
L auto
T -100

ALPHABET

UNIQUE

IT IS TIME

CONFLICT

DRAWBOT

Specimen

Specter Roman
(BETA 2017)

Example

S 80 pt
L auto
T -100

KWALITEIT
STUDIEREN
DEN HAAG
KRIMPEN
EXTREEM

Specimen

Specter Roman
(BETA 2017)

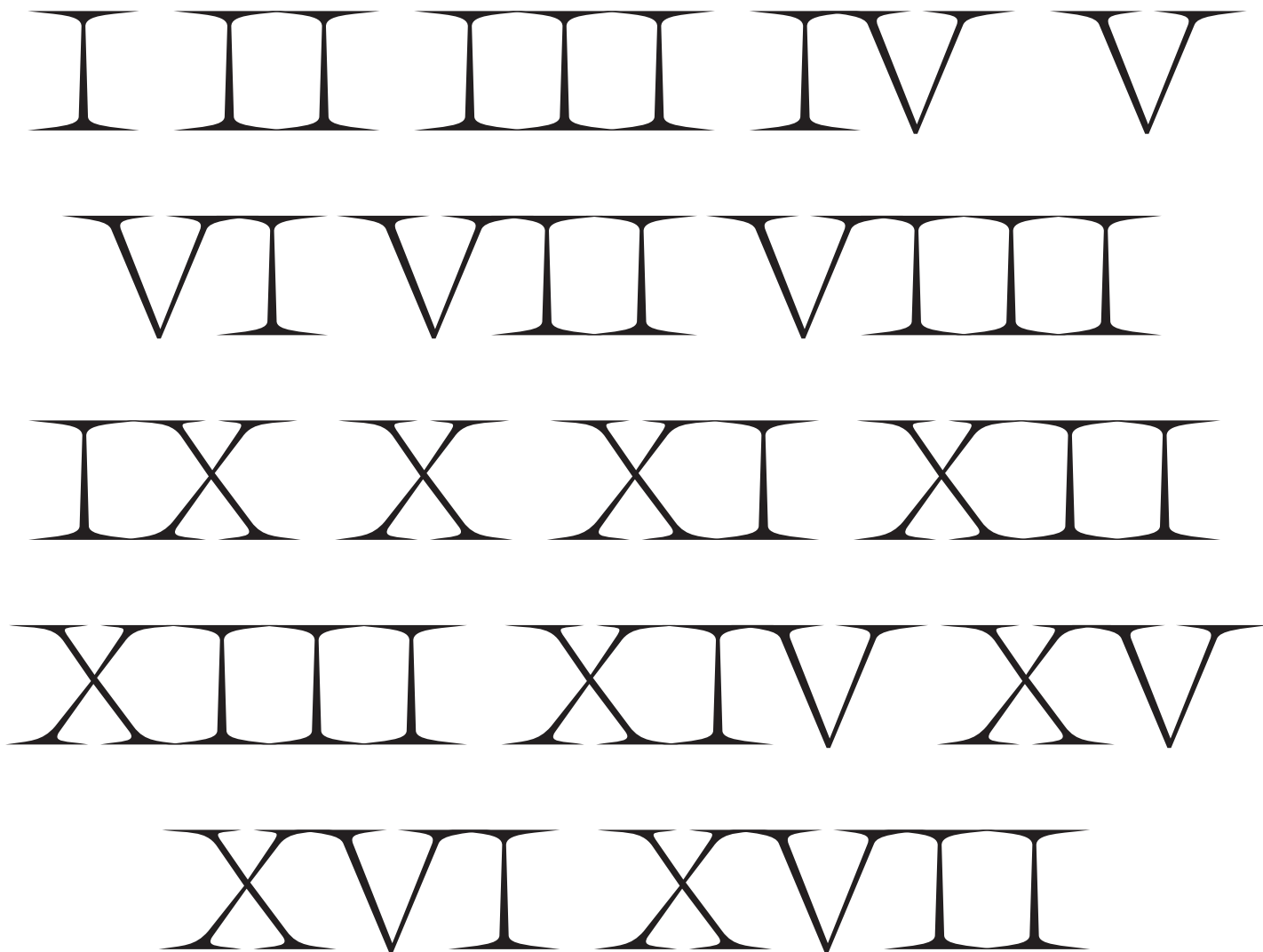
Example

S	72 pt
L	auto
T	-100

XL

Specimen

Specter Roman
(BETA 2017)



Specimen

Specter Roman
(BETA 2017)

Example

S 72 pt
L auto
T -100

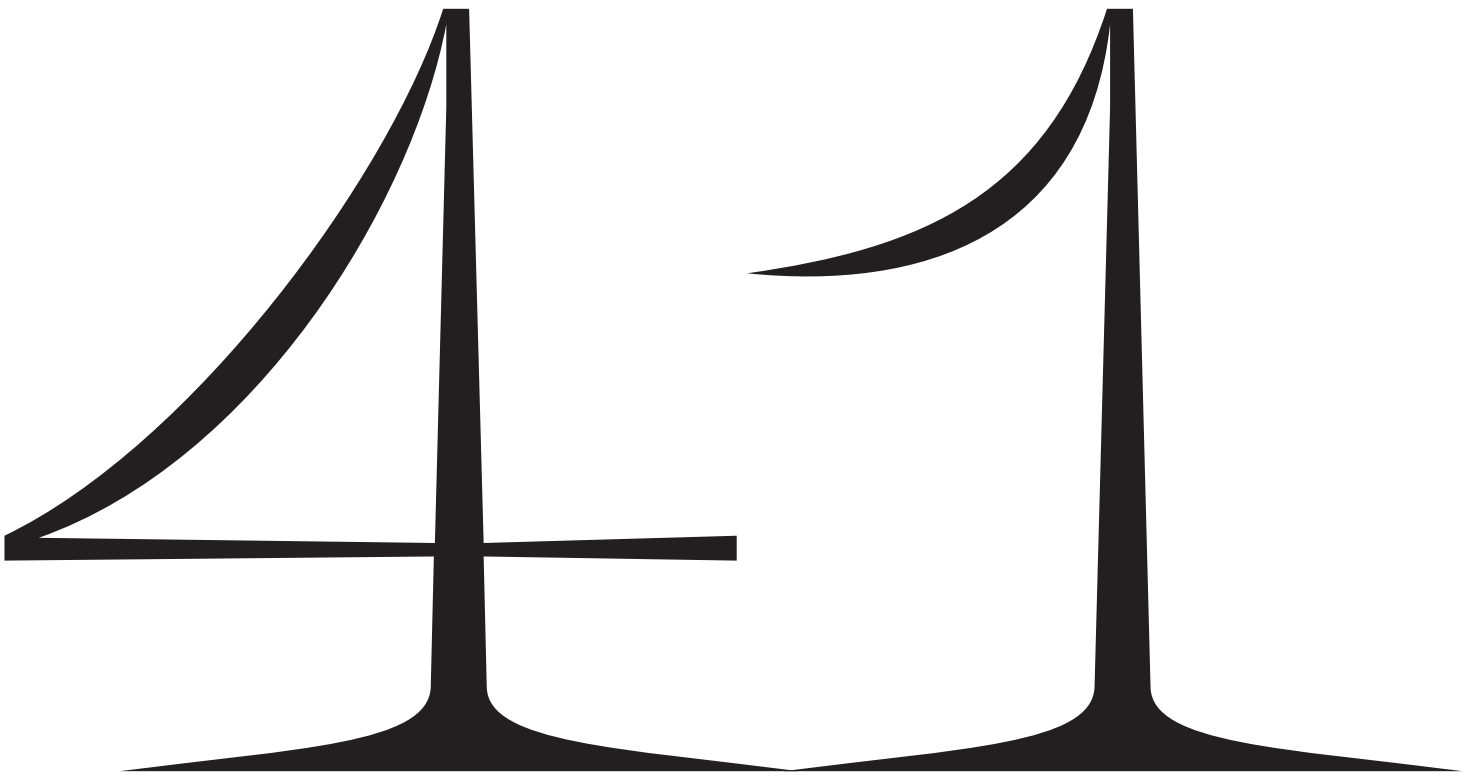
(NLD) (USA)
(CZ) (BR) (RS)
(DE) (BE) (SE)
(IT) (DK) (LU)
(HR) (FR) (ES)

Specimen

Specter Roman
(BETA 2017)

Example

S 72 pt
L auto
T -100



Specimen

Specter Roman
(BETA 2017)