



### General Features

- ◆ Sealed and maintenance free operation.
- ◆ Non-Spillable construction design.
- ◆ ABS containers and covers(UL94HB, UL94V-0) optional.
- ◆ Safety valve installation for explosion proof.
- ◆ High quality and high reliability.
- ◆ Exceptional deep discharge recovery performance.
- ◆ Low self discharge characteristic.
- ◆ Flexibility design for multiple install positions.



Battery Type	Valve-Regulated, Absorbed Glass Mat (AGM) Technology			
Nominal Voltage	6V			
Capacity(20°C)	20HR(5.04A, 1.8V/cell)	10HR(9.7A, 1.80V)	5HR(16.7A, 1.75V)	1HR(58.6A, 1.60V)
	100.8AH	97.0AH	83.5AH	58.6AH
Dimensions	Length	Width	Height	Total Height
	195mm(7.68inches)	170mm(6.69inches)	206.5mm(8.13inches)	212.5mm(8.37inches)
Approx Weight	Approx 15.6 kg (34.4lbs)			
Internal Resistance	Full Charged at 20°C : Approx 5.0mΩ			
Self Discharge	3% of capacity declined per month at 20°C			
Capacity affected by Temperature(10HR)	40°C	25°C	0°C	-15°C
	103%	100%	86%	65%
Charging Voltage (V)	Cycle use		Float use	
	7.2V~7.5V at 20 °C. Temp. Coefficient -15mV/°C		6.75V~6.9V at 20°C. Temp. Coefficient (-10mV/°C)	
Current	Max. Discharge Current		Initial Charging Current	
	1200A		Less than 30.0A	
Operating Temp. Range	Discharge		Charging	
	-15~50°C (5~122°F)		0~40°C (32~104°F)	
			Storage	
			-15~40°C (5~104°F)	

### Constant Current Discharge (Amperes) at 20 °C (68°F)

F.V/Time	5min	10min	15min	20min	30min	45min	1h	2h	3h	4h	5h	6h	8h	10h	20h
1.85V/cell	163	128	109	90.9	73.0	55.3	45.3	28.8	22.8	18.6	15.2	13.2	10.7	9.16	5.00
1.80V/cell	218	163	131	107	86.2	64.3	50.7	31.5	24.5	19.9	16.3	14.2	11.4	9.70	5.04
1.75V/cell	246	179	143	116	89.5	66.7	53.0	32.6	25.0	20.3	16.7	14.6	11.6	9.80	5.09
1.70V/cell	271	196	153	122	93.1	69.4	54.7	33.9	25.7	20.9	17.1	14.9	11.7	9.89	5.19
1.65V/cell	299	211	163	129	98.2	71.1	56.6	34.9	26.8	21.6	17.6	15.2	11.9	10.1	5.26
1.60V/cell	330	229	174	138	104	74.1	58.6	36.0	27.6	22.3	18.2	15.5	12.0	10.2	5.29

### Constant Power Discharge (Watts) at 20 °C (68°F)

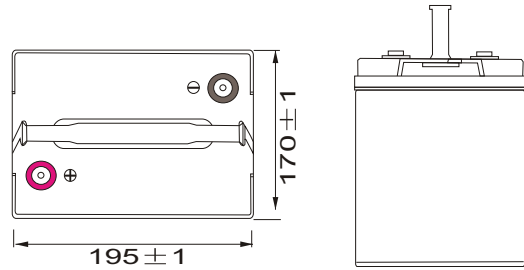
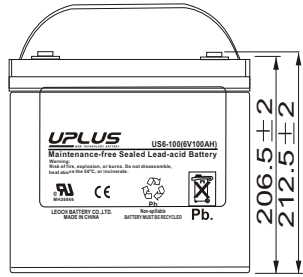
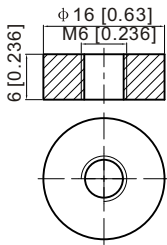
F.V/Time	5min	10min	15min	20min	30min	45min	1h	2h	3h	4h	5h	6h	8h	10h	20h
1.85V/cell	297	236	203	171	139	106	87.3	56.0	44.4	36.4	29.7	26.0	21.2	18.1	9.90
1.80V/cell	395	298	242	200	162	123	97.3	60.7	47.5	38.7	31.8	27.7	22.4	19.2	10.0
1.75V/cell	436	322	261	213	167	126	101	62.7	48.2	39.4	32.5	28.4	22.7	19.3	10.1
1.70V/cell	466	343	275	222	172	131	104	65.1	49.5	40.4	33.3	28.9	23.0	19.5	10.2
1.65V/cell	507	367	290	234	180	133	107	66.5	51.4	41.6	34.1	29.5	23.3	19.9	10.4
1.60V/cell	546	390	305	246	189	137	110	68.4	52.7	42.7	35.1	30.0	23.5	20.1	10.4



# Dimensions

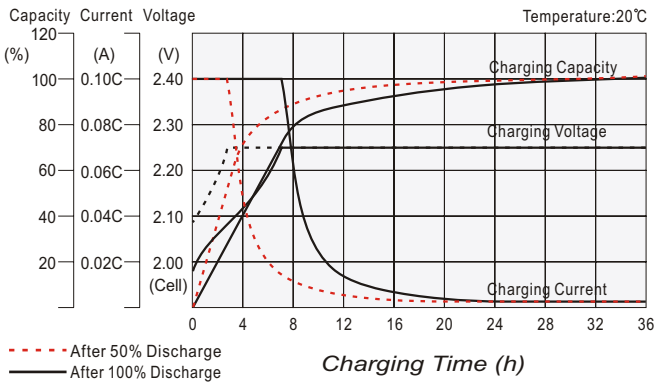
## T6 Terminal

Unit: mm [inches]

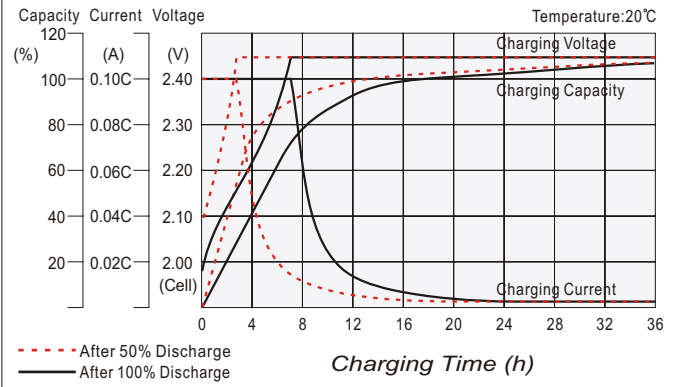


Torque: 3.9~5.4N\*M

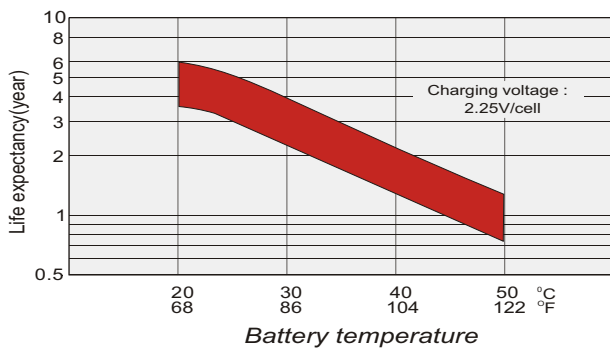
## Float charging characteristics



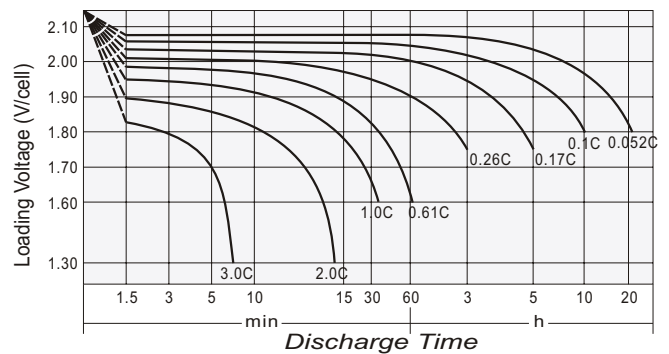
## Cycle use charging characteristics



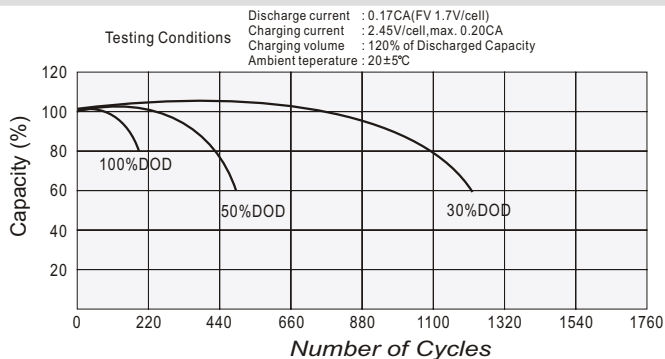
## Effect of Temperature on Long Term Float Life



## Discharge characteristics



## Cycle Life in Relation to Depth of Discharge



## Self Discharge Characteristics

