

SOLID Wall

Based on SOLID Pro

Plain and
simple
installation

Fast system
assembly
time

Invisible
mounting
materials

Sustainable
and
effective

Fits all wall
types



SOLITEK

Mokslininku str. 6A,
Vilnius 08412, Lithuania
Tel. +370 5 263 8774
info@solitek.eu
www.solitek.eu

72 cells ⚡ 380W ⚡ 320W 60 cells

30

Product
warranty

87%

Power
guarantee

30

Efficiency
guarantee

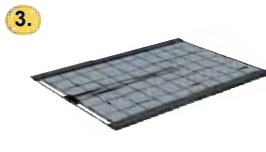
Construction drawing



1. Fixing bracket is fixed to the wall.



2. Standard T or L profile as guiding rail with preassembled hooks is fixed to the bracket

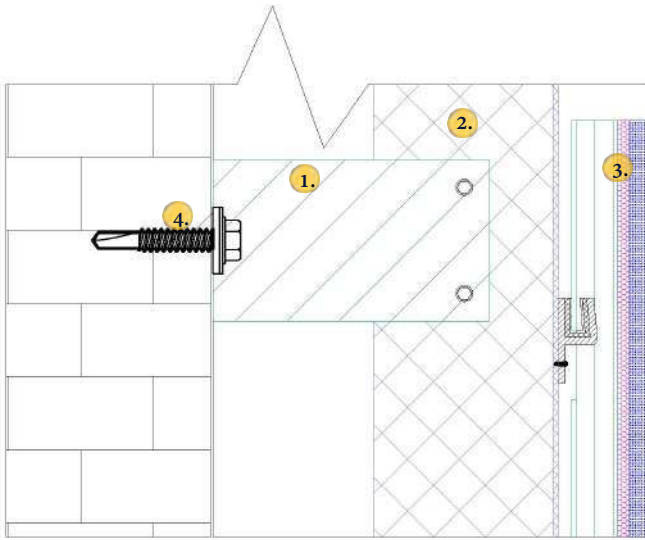


3. Frameless Glass/Glass PV module with special glued profiles on the back face is attached on the hook.

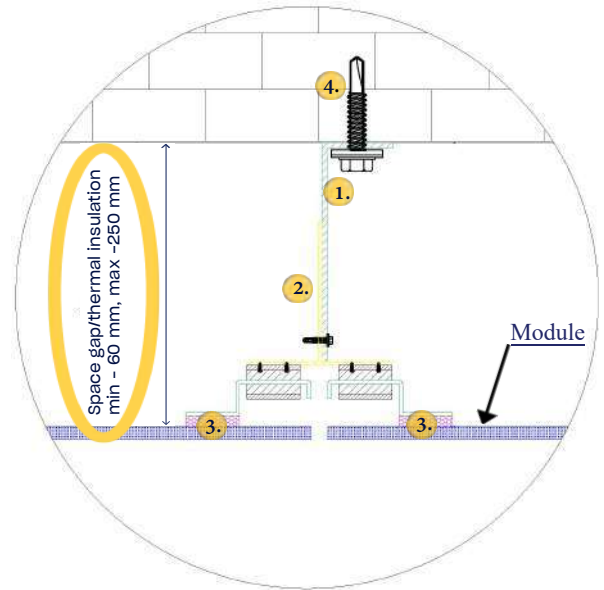


4. Anchors, screws and rivets for materials fixing.

Vertical section



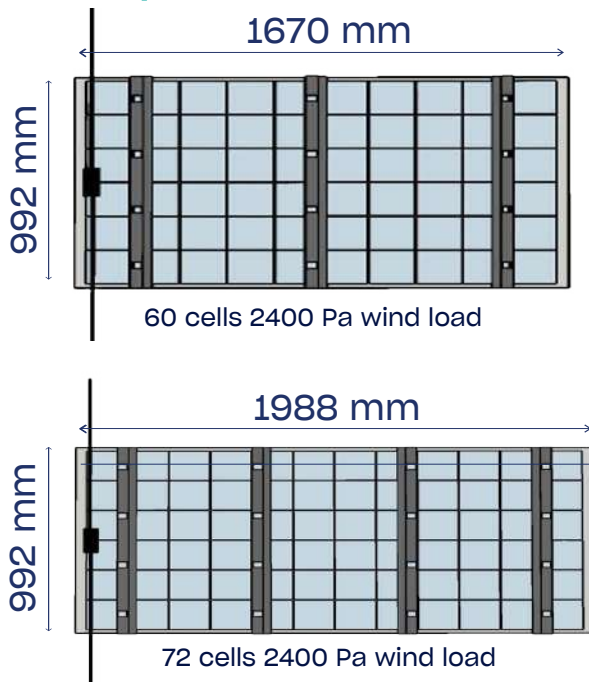
Horizontal section



Mounting construction

- Step No. 1. Positioning of brackets
- Step No. 2. Fixing of brackets
- Step No. 3. Fixing T/L profiles
- Step No. 4. Installing PV panels

Landscape



Portrait

