



### General Features

- ◆ Sealed and maintenance free operation.
- ◆ Non-Spillable construction design.
- ◆ ABS containers and covers(UL94HB, UL94V-0) optional.
- ◆ Safety valve installation for explosion proof.
- ◆ High quality and high reliability.
- ◆ Exceptional deep discharge recovery performance.
- ◆ Low self discharge characteristic.
- ◆ Flexibility design for multiple install positions.



Battery Type	Valve-Regulated, Absorbed Glass Mat (AGM) Technology			
Nominal Voltage	6V			
Capacity (20°C)	20HR(0.412A, 1.8V/cell)	10HR(0.767A, 1.80V)	5HR(1.4A, 1.75V)	1HR(5.12A, 1.60V)
	8.24AH	7.67AH	7.2AH	5.12AH
Dimensions	Length	Width	Height	Total Height
	151mm(5.94inches)	34mm(1.34inches)	94mm(3.70inches)	100mm(3.94inches)
Approx Weight	Approx 1.4 kg (3.09lbs)			
Internal Resistance	Full Charged at 20°C: Approx 11m Ω			
Self Discharge	3% of capacity declined per month at 20°C			
Capacity affected by Temperature (10HR)	40°C	25°C	0°C	-15°C
	103%	100%	86%	65%
Charging Voltage (V)	Cycle use		Float use	
	7.2V~7.5V at 20 °C. T emp. Coefficient -15mV/ °C		6.75V~6.9V at 20 °C. Temp. Coefficient (-10mV/ °C)	
Current	Max. Discharge Current		Initial Charging Current	
	127.5A		Less than 2.55A	
Operating Temp. Range	Discharge		Charging	Storage
	-15 ~ 50°C (5 ~ 122°F)		0 ~ 40°C (32 ~ 104°F)	-15 ~ 40°C (5 ~ 104°F)

### Constant Current Discharge (Amperes) at 20 °C (68 °F)

F.V/Time	5min	10min	15min	20min	30min	45min	1h	2h	3h	4h	5h	6h	8h	10h	20h
1.85V/cell	15.4	11.8	9.8	8.46	6.61	4.87	4.10	2.43	1.90	1.54	1.27	1.10	0.890	0.744	0.408
1.80V/cell	20.6	15.1	11.8	10.00	7.80	5.66	4.60	2.65	2.04	1.65	1.37	1.18	0.944	0.767	0.412
1.75V/cell	23.3	16.6	12.9	10.76	8.10	5.88	4.81	2.75	2.08	1.69	1.40	1.22	0.961	0.787	0.416
1.70V/cell	25.6	18.1	13.8	11.30	8.43	6.11	4.96	2.82	2.14	1.73	1.44	1.24	0.974	0.803	0.424
1.65V/cell	28.3	19.5	14.7	12.0	8.89	6.26	5.08	2.86	2.23	1.79	1.48	1.27	0.989	0.820	0.430
1.60V/cell	31.2	21.2	15.7	12.8	9.38	6.53	5.12	2.98	2.30	1.85	1.53	1.30	0.999	0.829	0.432

### Constant Power Discharge (Watts) at 20 °C (68 °F)

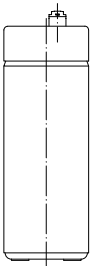
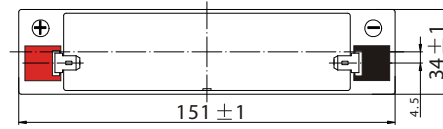
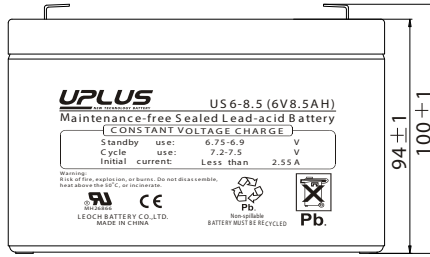
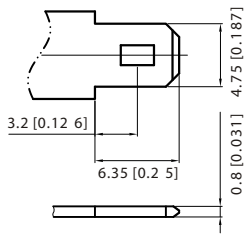
F.V/Time	5min	10min	15min	20min	30min	45min	1h	2h	3h	4h	5h	6h	8h	10h	20h
1.85V/cell	28.1	21.8	18.3	15.9	12.6	9.36	7.92	4.71	3.70	3.02	2.49	2.17	1.76	1.47	0.809
1.80V/cell	37.3	27.5	21.8	18.6	14.6	10.80	8.82	5.11	3.96	3.21	2.66	2.32	1.86	1.52	0.815
1.75V/cell	41.2	29.8	23.5	19.8	15.1	11.10	9.18	5.28	4.02	3.27	2.73	2.37	1.89	1.55	0.823
1.70V/cell	44.1	31.7	24.7	20.6	15.6	11.50	9.44	5.40	4.12	3.35	2.79	2.42	1.91	1.58	0.837
1.65V/cell	48.0	33.9	26.1	21.8	16.3	11.68	9.59	5.45	4.28	3.45	2.86	2.47	1.94	1.61	0.847
1.60V/cell	51.7	36.0	27.4	22.9	17.1	12.1	9.63	5.65	4.39	3.55	2.94	2.51	1.95	1.63	0.851



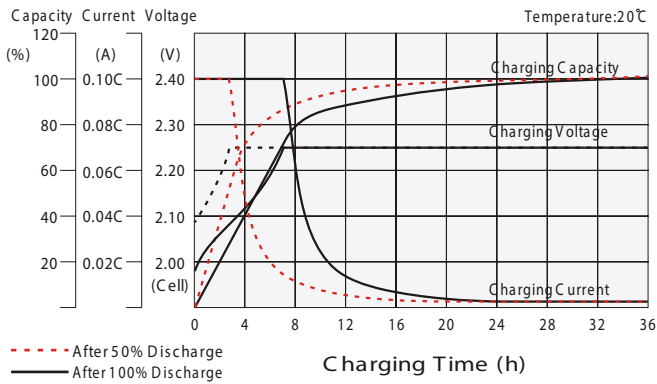
# Dimensions

## T1 Terminal

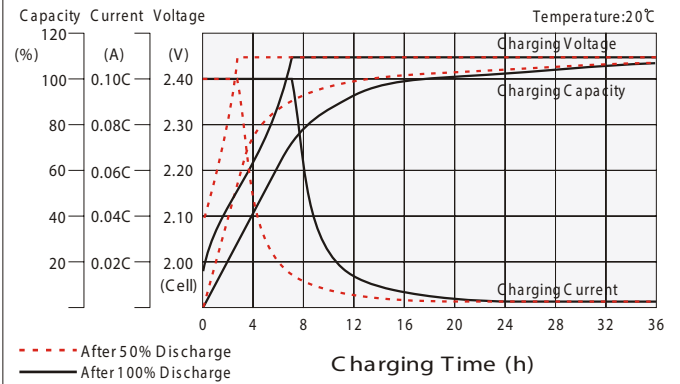
Unit: mm [inches]



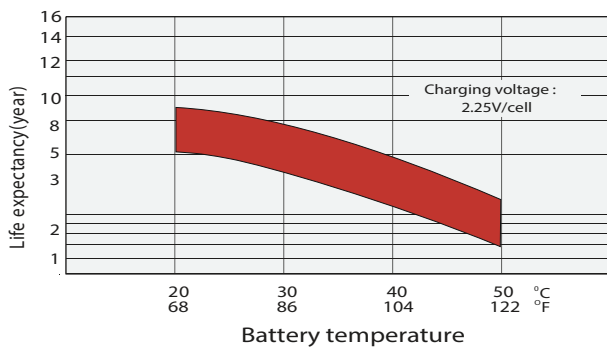
## Float charging characteristics



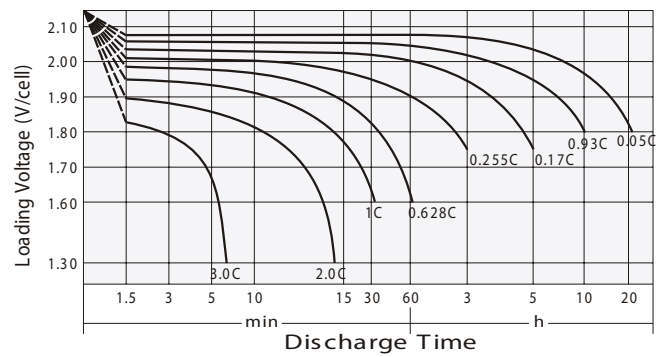
## Cycle use charging characteristics



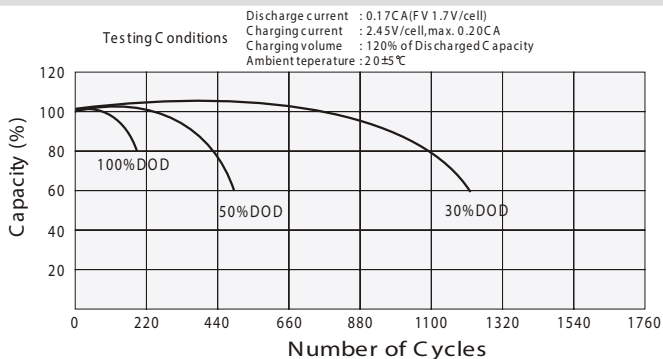
## Effect of Temperature on Long Term Float Life



## Discharge characteristics



## Cycle Life in Relation to Depth of Discharge



## Self Discharge Characteristics

