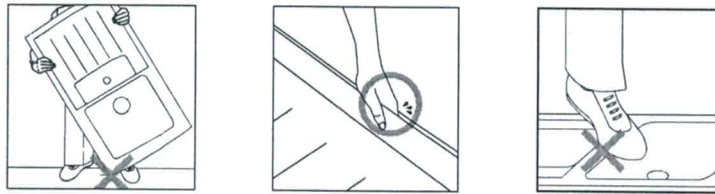


# Quartztone<sup>®</sup> Granite Sink Installation instruction

Please carefully review complete instructions before beginning installation. These instructions are for installation with solid surface and composite material countertops. Houzer recommends a professional installer and is not responsible for damages to the sink or countertop during installation. Warranty void for improper installation and handling. **Note: When punching out hole(s), ensure sink is supported on outer edge either by placing in countertop cutout or securely supporting outer edge before punching out hole. Do NOT punch hole while sink is free-standing.\***

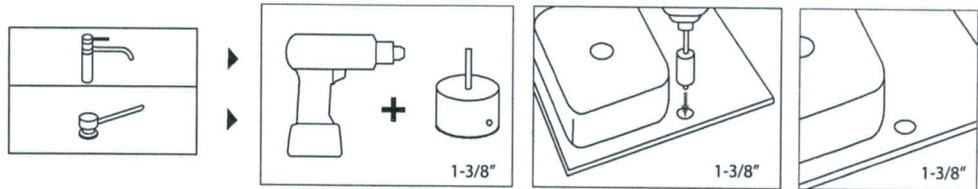
## Handling

Be sure to wear personal safety devices such as safety goggles at all times.

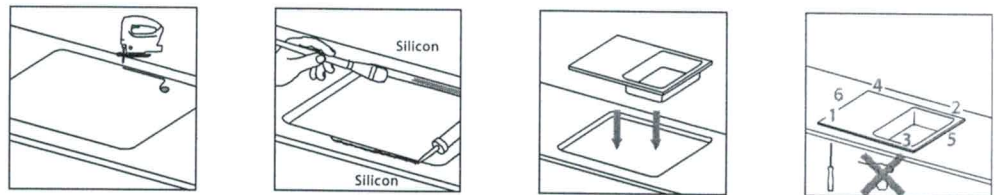


## Hole additions

Drill a 1-3/8" holes into underside of sink at the appropriate position using electric drill with hole saw.

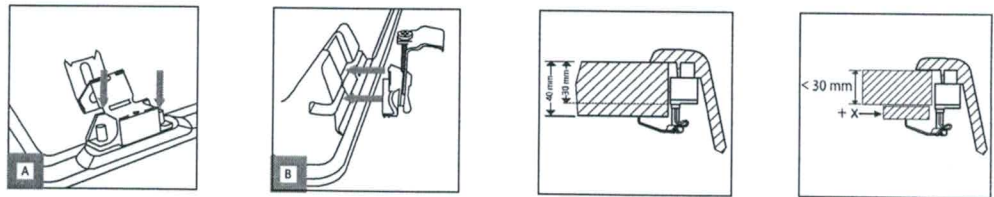


## Topmount/Drop-in installation

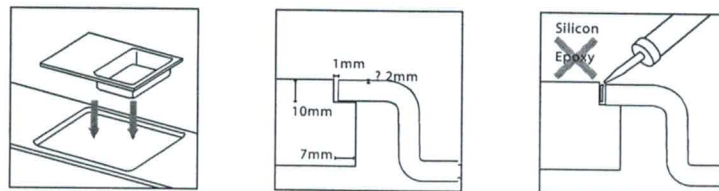


## Topmount/Drop-in installation

Mounting and fastening clips



## Flush mount installation



## Undermount installation

