

電子楽器を改良

THE  
WORLD'S  
MUSIC MAKERS

[www.fgnguitars.com](http://www.fgnguitars.com)

PRODUCT CATALOG 2013  
FGN | GUITARS & BASSES



<http://www.myspace.com/fujigen>  
<http://www.facebook.com/fujigenguitars>  
<http://twitter.com/fujigenguitars>

FUJIGEN INC. Musical Instrument Division  
3680-1, Tokiwa, Omachi city, Nagano pref., 398-0004 Japan





## FROM THE 1960s TO THE PRESENT FUJIGEN – HISTORIC GUITAR MANUFACTURE IN JAPAN

FGN guitars unite best woods and parts with long experience in best building quality over 50 years. We have built many kinds of famous brand electric guitars and basses as one of OEM manufactures in Japan for half a century. Today, FUJIGEN is expanding into a global market with the aim to establish our original guitar brand named "FGN Guitars" made by Japanese craftsmen who have long experiences and spirits of craftsmanship and innovation.



### 2013 FGN GUITARS & BASSES Table of Contents

FUJIGEN FACTORY TOUR	04
VIRTUOSO	08
FLAME	10
ODYSSEY	14
ELAN	18
MIGHTY JAZZ	22
MASTERFIELD Semi Acoustic	26
MASTERFIELD Full Acoustic	28
TEAM FGN MEMBERS	30



## 1. OVERSEAS AND GLOBAL MARKETS / BECOMING No.1

The Fujigen Instrumental Manufacturing Co., Ltd. was established in 1960. The term, "Fuji" refers to Japan's holy Mount Fuji, it was chosen to underline our company's goal to become the world's No.1 guitar manufacturer.

At FUJIGEN we started with classical guitars manufacturing, but soon shifted to electric guitars to meet a quickly growing demand by overseas business partners, especially in the USA, where electric guitars were becoming very popular. Classical guitars remained our main product in the domestic Japanese market. Inexperienced with this new approach of electric instruments, our craftsmen and engineers did meticulous analysis of existing guitar products and accumulated its experience and skills by continuous research. By trial and error and through a long series of tests and prototypes, we gathered substantiated experiences as our key to become one of the top guitar makers of the world.

It was in 1965 when The Ventures entered Japan as the first popular guitar band. Their performance started pop music and a guitar boom in Japan, customer demands soared. Many upcoming guitar manufacturing companies tried to compete in the new market. FUJIGEN was a high rank guitar maker and soon won leadership in the majority of sales, especially in the electric guitar market. But towards the end of the 60's guitar boom subsided. Many newcomers closed their business one after another. In the Matsumoto area in Nagano alone, over 50 guitar manufacturing companies went bankrupt.

Between 1964 and 1969, more than 80 domestic companies had competed in the electric guitar market. After the crash, only a few manufacturing companies survived, among them FUJIGEN. The years 1965 to 1975 were not very successful, partly because of the oil crisis, the high-rising yen and also because some foreign makers pushed into the guitar manufacturing market. FUJIGEN decided to face the situation. In the middle of the crisis, we decided on two goals: **To become the world's leading guitar manufacturer** and **to focus investment on the development of products**. Striving to reach these goals enhanced our corporate strength.

In 1977, through a joint capital investment between Roland Corporation and FUJIGEN, we established the FUJI ROLAND CORP, based in Matsumoto. Together we developed the world's first guitar synthesizer GR-500. The most successful GR-300 / G-808 is still favored by many of today's guitarists such as Pat Metheny.

In 1982, we started to cooperate with CBS Fender Corporation to strengthen our footing in the American market. In the early 80's many famous brands had their production outsourced to so called OEMs (Original Equipment Manufactures). FUJIGEN was a top OEM with great experience and production capacity. Our monthly output raised up to 14,000 electric guitars. This was world leadership. In 1983, we had reached our goal.

But this situation did not last for very long.



Classic Guitar "FUJI GEN GAKKI" made in 1960

The first guitar synthesizer in the world

## 2. CRISIS AND REBIRTH / ENTRY INTO DISPARATE INDUSTRIES

In April 1989, we changed our name from "Fuji Gen Gakki Manufacturing Corp." to simply "Fujigen" and decided to support companies, form a group and promote each company's development individually. Together we motivated and encouraged all employees to open up a new era in the world guitar business. We see a worldwide increasing demand into improvement, thus we invest into continuous research for superior original products. In the field of electric guitars, we have decided to put quality over quantity and establish ourselves as a brand for middle and high grade guitars.

There are some secondary business FUJIGEN is engaged: small music boxes named HEART FIELD, an ukulele named PUPUKEA and a Japanese traditional drum named RYU-SYO (rising dragon).

FUJIGEN has now 3 factories in 3 locations: The head factory in Matsumoto City, the Omachi factory in Matsumoto surrounding area and the Hirooka factory in Shiojiri City. At the Omachi factory, timber is seasoned by our proprietary drying system. Top conditioned wood gets accurately shaped by 5 axis CNC-routers for guitar bodies and necks. In both the head factory in Matsumoto and in the Hirooka factory, products are coated, assembled and finished. There are 22 supporting companies in the Matsumoto area cooperating with us as a group. This network of support and cooperation is a strong production key for FUJIGEN. As an investment into the future we take great care of our employees who's accumulation and tradition of technologies and technology is passed on to apprentices.



Fujigen Custom House Tokyo

CNC Router System

## 3. ESTABLISHING FUJIGEN'S ORIGINAL BRAND (FGN GUITARS)

As an OEM for top brands, we intend to tighten our position in terms of quality over quantity as a reliable partner. In order to attain a certain independence and to realize our own design ideas, we have launched our brand FGN for overseas market. We have opened an original custom shop in Ikebukuro, Tokyo and we launched a Japanese online-shop for FUJIGEN / FGN brand guitars and basses. We recently started establishing a worldwide distribution network for FGN branded products.

Our custom house in Tokyo is the main sales point for FUJIGEN / FGN branded guitars and basses. The expert staff receives special orders for individually modified instruments and provides repair services. We care for quality customer service with thoroughness in dating and craftsmanship. We are proud to do everything possible to satisfy our customers.

With all this, FGN is striving to use all of its assets as effectively as possible to make progress towards a top brand guitar maker with a big name: FGN Guitars.



Fujigen guitar factory (Nagano-pref., Japan)

# FUJIGEN FACTORY TOUR

We direct particular attention to select every wood material including Mahogany, Maple, Alder, Ash, and Rosewood etc. for all FGN products. We have been purchasing all kinds of timbers from several reliable world lumber companies who has been familiar with us for many years. Also we always require to every lumber company to submit records of their product's backgrounds when we will purchase woods from them according to the Lacey act. Every few years, our staffs move to overseas timber companies, and continually judge and select superior quality woods harshly as buyers from FGN Guitars. Every kind of timber, selected by FGN Guitars, the maker of fine and high-end guitars for 52 years, is a fine grade of wood which maintain a perfect balance of both practical, beautiful and value.



Soon after we'll receive those timbers from overseas, we arrange the natural seasoning for all timbers in our warehouse to accommodate the climate in our factory of Japan. We stack the new deliveries timbers on the warehouse carefully and expose them to the sun for a long times. During that time, we can check that some timbers has cracks and bends according to the difference of outdoor air temperature and humidity. After the natural seasoning, We season the timbers with the artificial drying. In the world guitar factories, It is very rare that there has such a drying facility like FGN Guitars. We use all timbers which have the most appropriate condition with strict temperature and humidity control. We adjust the moisture content all of timbers around 5% to increase wood strength and also bring the fine resonance and vibration of the timbers.



With the timbers which have the most appropriate condition, our craftsmen who has great skills and long experience to check each wood grains for book match. Then, we arrange the cutting and glueing them with our advanced processing techniques. We involve a wide range of processes including wood cutting with CNC router programming, hand-making and sanding with a extraordinary producing sensibility and great skills. And then, we bring the wood materials to our painting rooms.



In our painting process, we put spray on the neck and body materials with several kinds of paints, sanding and buffing by hand works. Considerable skill is required for them. Besides, we have to take special care to reduce small dusts and flockings in the air with complete temperature and humidity management.



After the painting process, we do a strict finishing process like fret and fingerboard's sandings. Those sanding process gives the most direct impact to the guitar's playabilities. For our FGN products, we apply the special fret-sanding method named "Expert sanding system" by hand work carefully. Therefore, we can feel the smooth bending and smooth fingerling onto the fretboards.



As final process, we assemble and inspect 100% of the products under the standard of our quality control system. After the final inspection, we store the products into the warehouse until the shipment. In this way, the FGN Guitars carefully manufactured are shipped to all customers. Traditionally, the characteristic of our company products is the more you touch and play with it for several years, the more vintage sound it produces in their wood grains to become even more beautiful and your most favorite guitar.

Photo: Chad Smith





# FGN New Fretting Technology

**Circle Fretting System (C.F.S.)** \*Patent No. 3282035

**C.F.S. is unique to all products of FGN Guitars.**



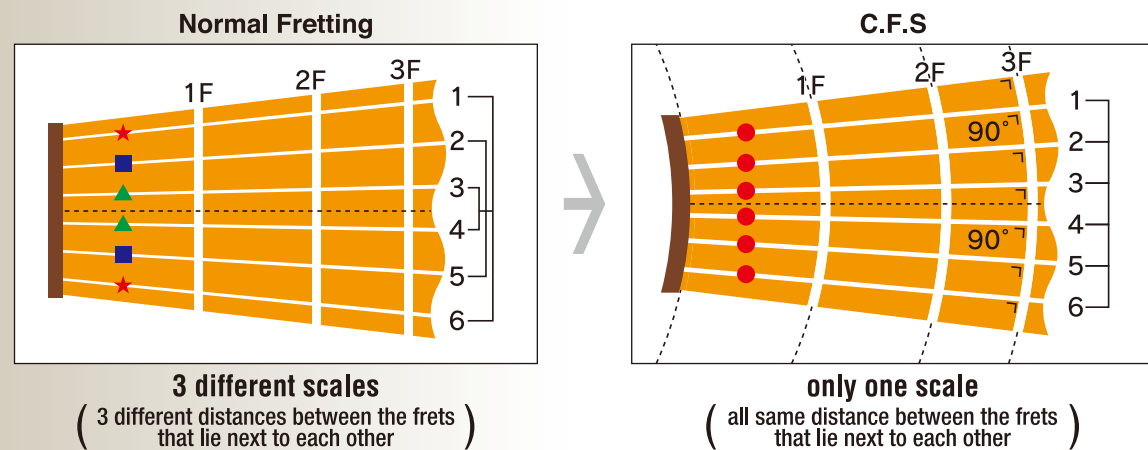
**Finely finished and slightly curved frets are mounted on the fingerboard to enhance pitch accuracy, create cleaner longer sustain and true harmonics.**

### Is it better?

Although we cannot predict whether the Circle Fretting System will replace traditional fret placement, FUJIGEN has discovered through extensive testing C.F.S has a definite positive effect on the playability and tone of fretted instruments and this is an important consideration for the discriminating musician.

### Musician's Voice

While our work and research on this revolutionary concept continues, long-term testing conducted by respected professional guitarists in a variety of genres yielded invariably positive feedback. The most frequent comment was that the guitars sounded noticeably cleaner and note separation more distinct, contributing to a more balanced and full sound in both fretting solo leads as well as chorded rhythm passages. A further comment praised the fact this enhanced separation and clarity was noticeable even when the guitar was used in combination with various effect accessories such as overdrive, reverb or chorus sound effects. Many musicians noted their fretting hand tended to remain more relaxed since their fingers were not subconsciously searching to compensate distortions.



- C.F.S Features**
- ① Extremely-Accurate Pitch
  - ② Bell-clear Sound
  - ③ Long Sustain
  - ④ Fast Resonance
  - ⑤ Sonorous Harmonics
  - ⑥ Sharply-defined Tone

# FGN New Versatile Tailpiece

**"FJTP"** (for **FLAME** and **ELAN**)

designed to maximise control of the string tension of your guitar

(\*The patent is now pending in the world by FGN.)

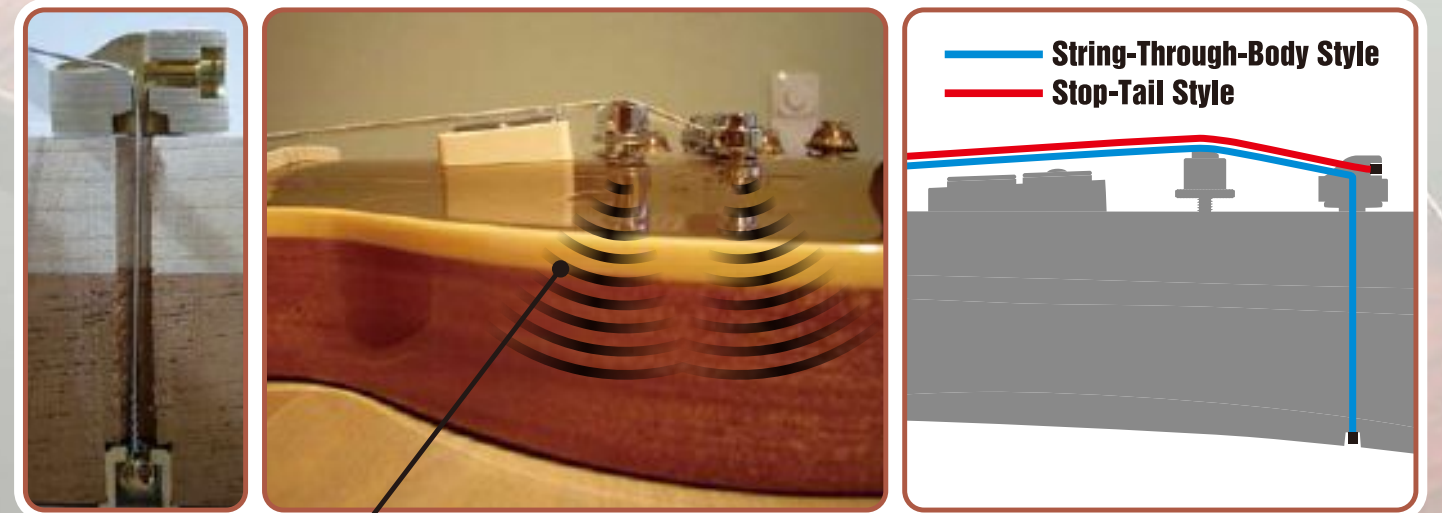
**FGN New Tailpiece**

**"FJTP"**



### "FJTP" Features String-Through-Body Style

We developed the FGN original tailpiece called "FJTP" which has two ways of string-guide holes. One way is from the bottom of the tailpiece as general and another one is from the back of the body. If you'll string a guitar from the back of the body, you can feel amazing resonance from all sides of the whole body and also the guitar sounds super tight and very strong even with the light gauge strings. Please check the FGN guitars with FJTP tailpiece without any amps. You can feel the great natural tone and amazing resonance from the wood materials.



"FJTP" String-Through-Body Style makes you feel amazing strong sounds and great resonance from all sides of the whole body through the interface between bridge + FJTP parts and body wood material.

### "FJTP" Features Stop-Tail Style



# FGN VIRTUOSO

## “PRIVATE RESERVED” COLLECTION

### What is the "VIRTUOSO" series?

The "VIRTUOSO" series is FGN's most high-end, luxury, and hidden treasure guitars. It is professionally almost "hand-crafted" by our major craftsmen who has long experience and great skills. The wood materials are strictly picked from our private wood-warehouse and they are most luxury and great timbers including "Heritage Timber" found on the earth. Besides, the VIRTUOSO has our Japanese traditional special arts. We'll apply our special binding system and traditional painting like Chinkin(gold leaf lacquer) finish etc. for it. VIRTUOSO series is very limited, "private reserved" and has mixture of world traditional cultures and methods. That is, it will be marked the beginning of the next generation's luxury guitar in the world.

### Special Features

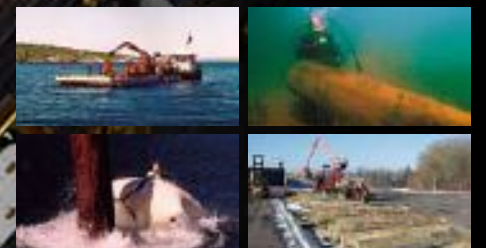
#### VIRTUOSO Special Binding

This is our special binding for the combination with two or three different kinds of body materials. After years of research, we decided to apply this binding system to all VIRTUOSO series. The binding has very important benefits for enhancing of resonance and leading the string vibration to the whole guitar body very fast. By the way, we have been the first guitar factory introducing CNC routers and kept using the machines for all products and brandnew sample models etc.



#### Heritage Wood

We are aware of the great sound of vintage guitars. The valuable "Heritage Wood" has been sleeping for generations of 70 up to amazing more 200 years. In past centuries, the timbers were cut and then moved to the lake for transportation and temporary storage. Some logs sunk to the ground and got buried into the lake bed, where an almost oxygen-free environment conserved the timber and kept it from decaying. 200 years later, we found the valuable timbers and brought them back on the ground. The timbers are of exceptional structural qualities. Underwater bacteria have kept the wood free of pests and permanently cleaned it from impurities. The sound effects joined the "Heritage Wood" on the neck or body is an unprecedented excellence resonance like vintage guitars.





# FLAME (FL)

"The next generation of set-in-neck guitar" to make appropriate adjustments at all kinds of music.

## NEW FLAGSHIP GUITAR INHERITED FROM RICH LEGACY



### Special Features

- 1 Circle Fretting System (proprietary system)**  
Slightly curved frets mounted on the fingerboard are quite useful to enhance pitch accuracy, longer sustain, and true harmonics. ( Reference P06 )
- 2 FGN Natural Satin Neck**  
Many people said the neck coated with gloss finish is very slippery and very difficult to hold it from sweating. We finally developed FGN original natural satin finish and it can make you feel very smooth and comfortable like the illusion of touching the natural wood. The original neck finish can improve your playability and the resonance from the neck to the body material.
- 3 Expert Fret Edge**  
FGN craftsmen are meticulous in ensuring Expert fret edges are rounded to perfection for a smooth feel on the neck. Position changes are seamless and the aesthetic is flawless.
- 4 Smooth Heel**  
Where most set-in neck guitars have a bulky, awkward heel, the FGN features a beautifully contoured neck joint to facilitate easy access to high register playing.
- 5 Deep Joint**  
FGN has adopted and redeveloped the deep joint on set-in neck guitars to optimize the junction area of the neck and body and increase overall guitar resonance.

- 6 Effortless Playability Low Setting Set Up (L.S.S)**  
FGN's unique and original neck-joint system improves the overall resonance of the guitar. The angle of the neck and body joint is a critical factor in the set-up of a stringed instrument. While string height is adjustable at the bridge, FGN's neck-joint system not only improves the overall resonance of the guitar it also supports extra low string action.
- 7 FGN original humbucker (FL)**  
Designed by Fujigen R&D section and manufactured by Japanese pickup craftsmen who have long experience and great skills. It's used Alnico 2 magnets and wax potted. The sound is like the original vintage P.A.F.s and persistently-mid high powerful sustains. Besides, it gives a very quick picking response and well-balanced sound between overdrive and clean sounds.
- 8 FJTP (proprietary product)**  
FUJIGEN original versatile tailpiece has two ways of string-guide holes, String-Through-Body style and Stop-Tail style. While we'll apply the String-Through-Body style, we can feel super strong and tight sounds and amazing resonance even with the light gauge strings.



## EFL-MH-PH



**SPECIFICATION FOR EFL-MH-PH**

CONSTRUCTION : Set In Neck	FRETS : 22F Jumbo (C.F.S)	TUNERS : Gotoh SG301-20
BODY : Mahogany Top / Mahogany Back	SCALE : 24.75" (628mm)	BRIDGE : Gotoh GE104B (Brass)
NECK : Mahogany	CONTROLS : 1V, 1T, 3-Way Toggle SW	TAILPIECE : FJTP (Brass)
FINGERBOARD : Rosewood	PICKUPS : FGN PS-3 (neck), FGN FL-1b (bridge)	COLOR : BK, TBL, NTF
STRINGS : D'Addario EXL110 (.010-.046)	FINISH : Polyester	CASE : Hard Case

## EFL-HM



**SPECIFICATION FOR EFL-HM**

CONSTRUCTION : Set In Neck	FRETS : 22F Jumbo (C.F.S)	TUNERS : Gotoh SG301-20
BODY : Hard Maple Top / Mahogany Back	SCALE : 24.75" (628mm)	BRIDGE : Gotoh GE104B (Brass)
NECK : Mahogany	CONTROLS : 1V, 1T, 3-Way Toggle SW	TAILPIECE : FJTP (Brass)
FINGERBOARD : Rosewood	PICKUPS : FGN FL-1n (neck), FGN FL-1b (bridge)	COLOR : GT, BK, HD, OB
STRINGS : D'Addario EXL110 (.010-.046)	FINISH : Polyester	CASE : Hard Case



**EFL-FM**



**SPECIFICATION FOR EFL-FM**

CONSTRUCTION : Set In Neck	FRETS : 22F Jumbo (C.F.S)	TUNERS : Gotoh SG301-20
BODY : Flamed Maple Top / Mahogany Back	SCALE : 24.75" (628mm)	BRIDGE : Gotoh GE104B (Brass)
NECK : Mahogany	CONTROLS : 1V, 1T, 3-Way Toggle SW	TAILPIECE : FJTP (Brass)
FINGERBOARD : Rosewood	PICKUPS : FGN FL-1n (neck) FGN FL-1b (bridge)	COLOR : EBL, TKS, HD, VV
STRINGS : D'Addario EXL110 (.010-.046)	FINISH : Polyester	CASE : Hard Case



**EFL-DE  
EFL-DE-M  
DARK EVOLUTION**



**SPECIFICATION FOR EFL-DE**

CONSTRUCTION : Set In Neck	FRETS : 22F Jumbo (C.F.S)	TUNERS : Gotoh SG301-20
BODY : Hard Maple Top / Mahogany Back	SCALE : 24.75" (628mm)	BRIDGE : Gotoh GE104B (Brass)
NECK : Mahogany	CONTROLS : 1V, 1T, 3-Way Toggle SW	TAILPIECE : FJTP (Brass)
FINGERBOARD : Rosewood (MBK, MBL) Maple (MWH)	PICKUPS : Seymour Duncan Blackouts AHB-1 x 2	COLOR : MBK, MWH, MBL
STRINGS : D'Addario EXL116 (.011-.052) with whole tone down	FINISH : Matt	CASE : Hard Case

C.F.S is installed on all FGN products.

**Steve Stevens**  
Billy Idol  
Photo: cfjphoto.com

**Andy Williams\***  
Bray Time II Die

**Matty Lewis**  
Zebrahead

**Lou Cotton\***  
We Came As Romans

**Joshua Moore\***  
We Came As Romans

**Cory Churko**  
Kelly Clarkson, Shania Twain etc

**Tony Pizzuti\***  
The Word Alive

**Mike Lewis**  
Lostprophets

**Kazuki Takemura**  
Crossfaith

**Oliver Hartmann**  
Hartmann  
Photo: Jimmie Sonelius

**Mikhail Svetlov**  
Black Obelisk

**Philip Manansala\***  
Of Mice & Men

\*Photo: Anne C. Ferguson



# FGN ODYSSEY (OS)

"Multifunctional vintage guitar" combined old and new technology for rock, blues and fusion style music.

## NEW INNOVATION OF EARIER VERSIONS



### Special Features

#### 1 Circle Fretting System (proprietary system)

Slightly curved frets mounted on the fingerboard are quite useful to enhance pitch accuracy, longer sustain, and true harmonics. ( Reference P06 )

#### 2 Expert Fret Edge

FGN craftsmen are meticulous in ensuring Expert fret edges are rounded to perfection for a smooth feel on the neck. Position changes are seamless and the aesthetic is flawless.

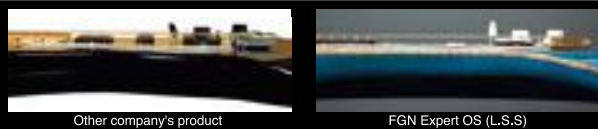
#### 3 Moonsault Heel Cutaway

The body heel, neck joint and plate are beautifully contoured to facilitate easy access to high register playing.

#### 4 Compound Radius

FGN employs a specific "Compound Radius" ratio on the fingerboard, representing advanced fingerboard technology. The neck radius gradually increases over the fingerboard's length, starting out rounded near the headstock and flattening out toward the neck joint. A diameter of 250mm (10") was selected for the radius at the nut for optimal comfort and grip for chords. A 350mm (14") radius at the heel has proven to be ideal in eliminating any unwanted buzz of string bending that may be caused by over-tightened fingerboard radius traditionally countered by high string action. The Compound Radius affords comfortable and easy bends even with string action below 1.9mm and ensures smooth fingering when playing solo passages high on the neck.

#### 5 Low setting set up (L.S.S.)



#### 6 FGN original pickups (OS)

Designed by Fujigen R&D section and manufactured by Japanese pickup craftsmen who have long experience and great skills. For single pickup, it's used Alnico 5 magnets. The sound is like the mixture of vintage tone in 1960 and modern powerful sustain. We cut the high-tone frequency which has harsh sounds to the ear, and boosted mid-high power range. Besides, it gives a very quick picking response and very useful for blues, fusion, rock, and shred style guitar players. For humbucker pickup, it's used Alnico 2 magnets. The sound is like persistently-mid high powerful tone and goes quite well with our FGN original single pickups above mentioned. It also reprises vintage bright and very unique fat sustain tones.

#### 7 Gotoh 510TS

The combination of the 510TS and L.S.S.( 5 ) makes clean sound and tight vintage tensions for all guitar players.

#### 8 Double Trickey Switch

Neck side SW : Humbucker Direct Out Bridge side SW : Coil Tap Function  
The mini toggle switch mounted between the volume and tone control knobs allows for split-coil and direct-out on the bridge humbucker. With the coil tap switch(bridge side), spanning the gap between a more distorted humbucker or a clean sounding single-coil tone. With the direct-out switch(neck side), you'll always leave it if you'd like to keep playing with a powerful distortion sound.

### FGN EXPERT SERIES EOS-AL-R



#### SPECIFICATION FOR EOS-AL-R

CONSTRUCTION : Bolt-On	FRETS : 22F Jumbo (C.F.S)	TUNERS : Gotoh SD91-05M Magnum Lock
BODY : Alder 2ply	SCALE : 25.5" (648mm)	BRIDGE : Gotoh 510TS-FE1
NECK : Maple 1ply	CONTROLS : 1V, 1T, 5-Way SW, 2 Mini Tricky SW	COLOR : LPB, BK, AWH, 3TS
FINGERBOARD : Rosewood (Compound Radius)	PICKUPS : FGN OS-1n (neck) FGN OS-1c (center) FGN OS-1b (bridge)	CASE : Hard Case
STRINGS : D'Addario EXL110 (.010-.046)	FINISH : Polyester - Urethane	

### FGN EXPERT SERIES EOS-AL-M



#### SPECIFICATION FOR EOS-AL-M

CONSTRUCTION : Bolt-On	FRETS : 22F Jumbo (C.F.S)	TUNERS : Gotoh SD91-05M Magnum Lock
BODY : Alder 2ply	SCALE : 25.5" (648mm)	BRIDGE : Gotoh 510TS-FE1
NECK : Maple 1ply	CONTROLS : 1V, 1T, 5-Way SW, 2 Mini Tricky SW	COLOR : 2TS, BK, AWH, NT
FINGERBOARD : Maple (Compound Radius)	PICKUPS : FGN OS-1n (neck) FGN OS-1c (center) FGN OS-1b (bridge)	CASE : Hard Case
STRINGS : D'Addario EXL110 (.010-.046)	FINISH : Polyester - Urethane	

C.F.S is installed on all FGN products.





## EOS-ASH-R



### SPECIFICATION FOR EOS-ASH-R

CONSTRUCTION : Bolt-On	FRETS : 22F Jumbo (C.F.S)	TUNERS : Gotoh SD91-05M Magnum Lock
BODY : Swamp Ash 2ply	SCALE : 25.5" (648mm)	BRIDGE : Gotoh 510TS-FE1
NECK : Maple 1ply	CONTROLS : 1V, 1T, 5-Way SW, 2 Mini Tricky SW	COLOR : WB, CC, VNT
FINGERBOARD : Rosewood (Compound Radius)	PICKUPS : FGN OS-1n (neck) FGN OS-1c (center) FGN OS-1b (bridge)	CASE : Hard Case
STRINGS : D'Addario EXL110 (.010-.046)	FINISH : Polyester - Urethane	



## EOS-FM-R



### SPECIFICATION FOR EOS-FM-R

CONSTRUCTION : Bolt-On	FRETS : 22F Jumbo (C.F.S)	TUNERS : Gotoh SD91-05M Magnum Lock
BODY : Flamed Maple Top / Ash Back	SCALE : 25.5" (648mm)	BRIDGE : Gotoh 510TS-FE1
NECK : Maple 1ply	CONTROLS : 1V, 1T, 5-Way SW, 2 Mini Tricky SW	COLOR : BL, VV, EBL
FINGERBOARD : Rosewood (Compound Radius)	PICKUPS : FGN OS-1n (neck) FGN OS-1c (center) FGN OS-1b (bridge)	CASE : Hard Case
STRINGS : D'Addario EXL110 (.010-.046)	FINISH : Polyester	



## EOS-ASH-M



### SPECIFICATION FOR EOS-ASH-M

CONSTRUCTION : Bolt-On	FRETS : 22F Jumbo (C.F.S)	TUNERS : Gotoh SD91-05M Magnum Lock
BODY : Swamp Ash 2ply	SCALE : 25.5" (648mm)	BRIDGE : Gotoh 510TS-FE1
NECK : Maple 1ply	CONTROLS : 1V, 1T, 5-Way SW, 2 Mini Tricky SW	COLOR : TB, 2TS, TBK
FINGERBOARD : Maple (Compound Radius)	PICKUPS : FGN OS-1n (neck) FGN OS-1c (center) FGN OS-1b (bridge)	CASE : Hard Case
STRINGS : D'Addario EXL110 (.010-.046)	FINISH : Polyester	



Dirk Czuya  
*Der-W*

Robert Marcello  
*Danger Danger*

Will Swan  
*Dance Gavin Dance*

Jona Weinhofen  
*Bring Me The Horizon, I Killed The Prom Queen*

Bruce Bouillet

C.F.S is installed on all FGN products.



# FGN ELAN (EL)

"New Generation Metal, Hardcore guitar" with high playabilities, stabbing and heavy, metal tones.

## NEW GENERATION HEAVY METAL TONE PERFECTED



### Special Features

**1 Circle Fretting System** (proprietary system)

Slightly curved frets mounted on the fingerboard are quite useful to enhance pitch accuracy, longer sustain, and true harmonics. ( Reference P06 )

**2 Expert Fret Edge**

FGN craftsmen are meticulous in ensuring Expert fret edges are rounded to perfection for a smooth feel on the neck. Position changes are seamless and the aesthetic is flawless.

**3 5ply Neck Construction**

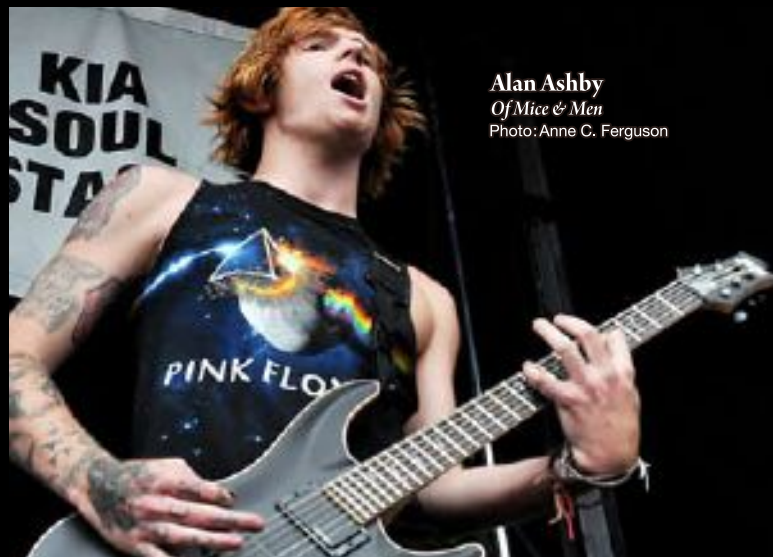
The 5ply neck is constructed of a sandwiched one between maples and walnuts. It increases in the strength of neck and enhances the resonance.

**4 FGN original humbucker (EL)**

Designed by Fujigen R&D section and manufactured by Japanese pickup craftsmen who have long experience and great skills. It's used Alnico 2 magnets and wax potted. The sound is like the persistently-mid high powerful sustains and bright clean tone. Besides, it gives a very quick picking response and useful for rock, shred and H/R, H/M guitar players.

**5 FJTP** (proprietary product)

FUJIGEN original versatile tailpiece has two ways of string-guide holes, String-Through-Body style and Stop-Tail style. While we'll apply the String-Through-Body style, we can feel super strong and tight sounds and amazing resonance even with the light gauge strings.



FGN EXPERT SERIES  
**EEL-HM**



**SPECIFICATION FOR EEL-HM**

CONSTRUCTION : Set In Neck	FRETS : 24F Jumbo (C.F.S)	TUNERS : Gotoh SG301-07
BODY : Hard Maple Top / Mahogany Back	SCALE : 25.5" (648mm)	BRIDGE : Gotoh GE104B (Brass)
NECK : Maple + Walnut 5ply	CONTROLS : 1V, 1T, 3-Way Toggle SW	TAILPIECE : FJTP (Brass)
FINGERBOARD : Rosewood	PICKUPS : FGN EL-1n (neck) FGN EL-1b (bridge)	COLOR : BHL, WHL
STRINGS : D'Addario EXL110 (.010-.046)	FINISH : Polyester - Urethane	CASE : Hard Case

FGN EXPERT SERIES  
**EEL-HM-TR**



**SPECIFICATION FOR EEL-HM-TR**

CONSTRUCTION : Set In Neck	FRETS : 24F Jumbo (C.F.S)	TUNERS : Gotoh SG301-07
BODY : Hard Maple Top / Mahogany Back	SCALE : 25.5" (648mm)	NECK : Maple + Walnut 5ply
CONTROLS : 1V, 1T, 3-Way Toggle SW	BRIDGE : Gotoh 1996T	FINGERBOARD : Rosewood
PICKUPS : FGN EL-1n (neck) FGN EL-1b (bridge)	COLOR : BHL, WHL	STRINGS : D'Addario EXL120 (.009-.042)
FINISH : Polyester - Urethane	CASE : Hard Case	



## EEL-FM



Zack Hansen  
The Word Alive  
Photo: Anne C. Ferguson



Transparent Black Sunburst (TKS)



Black Cherry Sunburst (BCS)

### SPECIFICATION FOR EEL-FM

CONSTRUCTION : Set In Neck	FRETS : 24F Jumbo (C.F.S)	TUNERS : Gotoh SG301-07
BODY : Flamed Maple Top / Mahogany Back	SCALE : 25.5" (648mm)	BRIDGE : Gotoh GE104B (Brass)
NECK : Maple + Walnut Sply	CONTROLS : 1V, 1T, 3-Way Toggle SW	TAILPIECE : FJTP (Brass)
FINGERBOARD : Rosewood	PICKUPS : FGN EL-1n (neck) FGN EL-1b (bridge)	COLOR : TKS, BCS
STRINGS : D'Addario EXL110 (.010-.046)	FINISH : Polyester	CASE : Hard Case



## EEL-FM-TR



Transparent Black Sunburst (TKS)



Black Cherry Sunburst (BCS)

### SPECIFICATION FOR EEL-FM-TR

CONSTRUCTION : Set In Neck	FRETS : 24F Jumbo (C.F.S)	TUNERS : Gotoh SG301-07
BODY : Flamed Maple Top / Mahogany Back	SCALE : 25.5" (648mm)	NECK : Maple + Walnut Sply
CONTROLS : 1V, 1T, 3-Way Toggle SW	BRIDGE : Gotoh 1996T	FINGERBOARD : Rosewood
PICKUPS : FGN EL-1n (neck) FGN EL-1b (bridge)	COLOR : TKS, BCS	STRINGS : D'Addario EXL120 (.009-.042)
FINISH : Polyester	CASE : Hard Case	



## EEL-DE EEL-DE-M DARK EVOLUTION



Matt Black (MBK)



EEL-DE-M  
Matt White (MWH)

### SPECIFICATION FOR EEL-DE

CONSTRUCTION : Set In Neck	FRETS : 24F Jumbo (C.F.S)	TUNERS : Gotoh SG301-07
BODY : Hard Maple Top / Mahogany Back	SCALE : 25.5" (648mm)	BRIDGE : Gotoh GE104B (Brass)
NECK : Maple + Walnut Sply	CONTROLS : 1V, 1T, 3-Way Toggle SW	TAILPIECE : FJTP (Brass)
FINGERBOARD : Rosewood (MBK) Maple (MWH)	PICKUPS : Seymour Duncan Blackouts AHB-1 x 2	COLOR : MBK, MTW
STRINGS : D'Addario EXL116 (.010-.052) with whole tone down	FINISH : Matt	CASE : Hard Case



## EEL-DE7 DARK EVOLUTION



Matt Black (MBK)



Matt White (MWH)

### SPECIFICATION FOR EEL-DE7

CONSTRUCTION : Set In Neck	FRETS : 24F Jumbo (C.F.S)	TUNERS : Gotoh SG380-07
BODY : Hard Maple Top / Mahogany Back	SCALE : 25.5" (648mm)	BRIDGE : Tone Pross TP-7
NECK : Maple + Walnut Sply	CONTROLS : 1V, 1T, 3-Way Toggle SW	TAILPIECE : FJTP-7 (Brass)
FINGERBOARD : Rosewood	PICKUPS : Seymour Duncan Blackouts AHB-1 x 2	COLOR : MBK, MTW
STRINGS : D'Addario EXL116 (.010-.059) with whole tone down	FINISH : Matt	CASE : Hard Case



# FGN MIGHTY JAZZ (MJ)

**"New Modern JB"**  
with super tight tension and clear tone,  
and powerful low EQ sound.

## NEW MODERN BASS WITH SUPER CLEAR LOW SOUND



### Special Features

**1 Circle Fretting System** (proprietary system)

Slightly curved frets mounted on the fingerboard are quite useful to enhance pitch accuracy, longer sustain, and true harmonics. ( Reference P06 )

**2 Expert Fret Edge**

FGN craftsmen are meticulous in ensuring Expert fret edges are rounded to perfection for a smooth feel on the neck. Position changes are seamless and the aesthetic is flawless.

**3 Moonsault Heel Cutaway**

The body heel, neck joint and plate are beautifully contoured to facilitate easy access to high register playing.

**4 FGN original pickups (MJ)**

Designed by Fujigen R&D section and manufactured by Japanese pickup craftsmen who have long experience and great skills. It's used Alnico 5 pole pieces and gives mighty midrange tone based on vintage pickups. The neck pickup is clean and present tone. And bridge is bright and fat tone to provide the real string vibration to the output directly.

**5 FGBB** (proprietary product)

FUJIGEN original versatile tailpiece has two ways of string-guide holes, String-Through-Body style and Stop-Tail style. While we'll apply the String-Through-Body style, we can feel super strong and tight sounds and amazing resonance even with the light gauge strings.



**Ben Osmundson**  
*Zebrahead*



## EMJ-ASH-M



### SPECIFICATION FOR EMJ-ASH-M

CONSTRUCTION : Bolt-On	FRETS : 22F (C.F.S)	TUNERS : Gotoh GB11W
BODY : Swamp Ash 2ply	SCALE : 34" (864mm)	BRIDGE : FGBB-4 (Brass)
NECK : Maple 1ply	CONTROLS : 2V, 1T	COLOR : VNT, 2TS, BK
FINGERBOARD : Maple	PICKUPS : FGN MJ-1n (neck) FGN MJ-1b (bridge)	CASE : Hard Case
STRINGS : FGN Original Stainless Strings (.045-.105)	FINISH : Polyester	



## EMJ-AL-R



### SPECIFICATION FOR EMJ-AL-R

CONSTRUCTION : Bolt-On	FRETS : 22F (C.F.S)	TUNERS : Gotoh GB11W
BODY : Alder 2ply	SCALE : 34" (864mm)	BRIDGE : FGBB-4
NECK : Maple 1ply	CONTROLS : 2V, 1T	COLOR : 3TS, BK, AWH, CAR
FINGERBOARD : Rosewood	PICKUPS : FGN MJ-1n (neck) FGN MJ-1b (bridge)	CASE : Hard Case
STRINGS : FGN Original Stainless Strings (.045-.105)	FINISH : Polyester - Urethane	

C.F.S is installed on all FGN products.



# EMJ5-AL-R



### SPECIFICATION FOR EMJ5-AL-R

CONSTRUCTION : Bolt-On	FRETS : 22F (C.F.S)	TUNERS : Gotoh GB11W
BODY : Alder 2ply	SCALE : 34" (864mm)	BRIDGE : FGBB-5
NECK : Maple 1ply	CONTROLS : 2V, 1T	COLOR : AWH, 3TS, CAR
FINGERBOARD : Rosewood	PICKUPS : FGN MJ-1n (neck) FGN MJ-1b (bridge)	CASE : Hard Case
STRINGS : FGN Original Stainless Strings (J45-135)	FINISH : Polyester - Urethane	

**Jordan McCoy**  
*Dance Gavin Dance*

**Tai Wright**  
*D.R.U.G.S*

**Daniel Shapiro**  
*The Word Alive*

**Hiroki Ikegawa**  
*Crossfaith*

**Stuart Richardson**  
*Lostprophets*

C.F.S is installed on all FGN products.

# FGN Guitars | The specialists



### Moritaka Yoshida (1958-), Wood selection

In 1976, He entered Fujigen corporation(then, official name was Fujigen instrument Inc.) First, he has learned about manufacturing guitar necks including the method of select high-quality woods and the usage of machines. Mainly, He has made good use of his experiences for years and played active parts for plywood of cross grained woods, for example, maple, light ash etc.. He says, "for plywood process, it's very difficult to use cross grained woods than straight grained woods and we always do our bests to image final high-quality shapes for guitar bodies." Though his long experience, He could get used to select high-quality grain of woods and operate plywood process.



### Toshiro Idei (1949-), Setting the neck

In 1970, He started to work in the instrument manufacturing corporation and have learned and studied about manufacturing guitars for 17 years. In 1987, He visited to America as Fujigen staff and established new guitar factory there. After he was back to Japan, He re-entered Fujigen factory and his carrier already reached 35 years. He mainly works in set neck lines at the present time. The setting-in neck process is one of the important processes to decide the playabilities. For accurately setting of necks, we confirm angles with original jigs many times, and plane neck pockets in bodies.



### Junichi Furuhashi (1948-), Assemble and Repair

In 1967, he entered an instrument manufacturing corporation in Matsumoto city, Nagano and had created the circuit design of electronic instruments for long years. After that, He became an important person in charge of guitar production services including neck set, assemble, tuning and repair. Besides, He was appreciated the ability of repair, invited to guitar trading company as a visiting worker, and have worked in high-grade guitar repair services for 2 years. He says, "I always work hard to repair while thinking of high-quality guitar sounds." Now, he mainly works in the guitar assembly and repair services.



### Isamu Hojo (1947-), Repair

When he was 22 years old, he entered Fujigen corporation (then, official name was Fujigen instrument Inc.) and started to learn about painting methods. He was on loan to the major guitar factory of America and retail stores for accumulation of painting techniques. He has worked in coating process lines for 40 years, especially high-quality coating repairing service. He says, "I can restore the expression of all instruments because I can repair all items with high-degree of difficulties and create own images about various colors." Now he takes lots of demands about repair and custom painting jobs from customers.



### Hideo Shimoda (1950-), Painting

When he was 20 years old, He started to learn all sorts of knowledge and techniques about grinding, mirror-surface process, spraying, and coating. After he entered the Fujigen Corporation and visited to a famous guitar factory in East coast, America including Fender's factory in Mexico to each his techniques to un-knowledge local staffs. He has operated about coating for many kinds of guitars for 35 years. Now, he is just an important person in charge of high-grade coating in our head office. For coating, we prefer thin bodies to thick bodies to prevent of growing thin, create a mirror surface with thin coating method, and bring out the best sounds of woods. He says, "I always carefully create the guitar bodies "slightly made up" which needs skillful experiences and techniques, not "heavy made up" which needs simply coating."



### Yoshio Hagiwara (1956-), Inspection and Repair

He was appreciated his experience about repair and maintenance for high-grade string instruments, entered Fujigen corporation and visited to the Mexico Factory of Fender USA as visiting worker. After the mission, via coating, assembly, material management processes, and now he works in final inspection lines. He always checks every parts and sounds for each guitars. With his long experiences, he can repair against each problem of guitars, for example, coating, electrical problems, fretting, accurate assembles and so on. As you know, the final inspection is the final process of manufacturing guitars, that is, the most closely related to the customers. He says, "We always work for customers. That is, the most important thing is to care customer service all the time."



# FGN Semi Acoustic (SA) Masterfield

"Vintage looking, easy body fitting and great playabilities guitar" with our original body construction.

A BLEND OF VINTAGE TONE AND NEW TECHNOLOGY



## Special Features

### 1 Circle Fretting System (proprietary system)

Slightly curved frets mounted on the fingerboard are quite useful to enhance pitch accuracy, longer sustain, and true harmonics. ( Reference P06 )

### 2 Expert Fret Edge

FGN craftsmen are meticulous in ensuring Expert fret edges are rounded to perfection for a smooth feel on the neck. Position changes are seamless and the aesthetic is flawless.

### 3 FGN original pickups

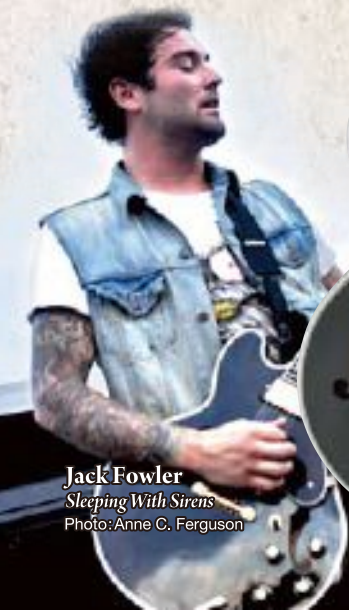
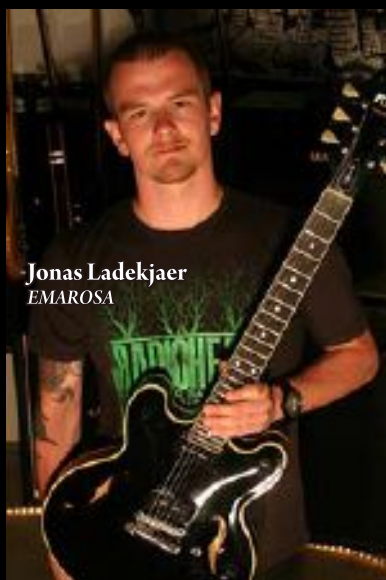
Designed by Fujigen R&D section and manufactured by Japanese pickup craftsmen who have long experience and great skills. It's used Alnico 3 pole pieces for HP and well-balanced P90 for SP models, and excellent with semi hollow guitars. The sound character is very clean and also good and very useful for making crunch and rock'n roll sounds, as the pickups sounds and constructions are directly transmitted into the body materials.

### 4 Precise-Hollow Body Special Construction

The rim and inner block scooped out from solid mahogany. This new technology was developed by calculating the strength, sounds, and weight very carefully.

### 5 15 Inch Original Fitting Body

We reviewed and designed the 15 inch body, a bit smaller than 335 specially for modern humans physical constitution. Also this model is less than 3kgs, so the playability is effortless.



## FGN Masterfield SERIES MSA-SP MSA-SP-C



### SPECIFICATION FOR MSA-SP / MSA-SP-C

CONSTRUCTION : Set In Neck	FRETS : 22F Medium (C.F.S)	TUNERS : Gotoh SD90-SL
BODY : Maple Top & Back / Mahogany Sides	SCALE : 24.75" (628mm)	BRIDGE : Gotoh GE104B
NECK : Mahogany	CONTROLS : 2V, 2T, 3-Way Toggle SW	TAILPIECE : Gotoh GE101A
FINGERBOARD : Rosewood FOR SP Ebony FOR SP-C	PICKUPS : FGN SP90 x 2	COLOR : CH, AS FOR SP BK FOR SP-C
STRINGS : D'Addario EXL110 (.010-.046)	FINISH : Acrylic Lacquer	CASE : Hard Case

## FGN Masterfield SERIES MSA-HP MSA-HP-C



### SPECIFICATION FOR MSA-HP / MSA-HP-C

CONSTRUCTION : Set In Neck	FRETS : 22F Medium (C.F.S)	TUNERS : Gotoh SD90-SL
BODY : Maple Top & Back / Mahogany Sides	SCALE : 24.75" (628mm)	BRIDGE : Gotoh GE104B
NECK : Mahogany	CONTROLS : 2V, 2T, 3-Way Toggle SW	TAILPIECE : Gotoh GE101A
FINGERBOARD : Rosewood FOR HP Ebony FOR HP-C	PICKUPS : FGN Alnico3 x 2	COLOR : CH, AS FOR HP BK FOR HP-C
STRINGS : D'Addario EXL110 (.010-.046)	FINISH : Acrylic Lacquer	CASE : Hard Case

C.F.S is installed on all FGN products.



# FGN Full Acoustic (FA) Masterfield

"Universal beautiful acoustic guitar" for rock'n roll, blues, classic, and Jazz music.

**A BLEND OF VINTAGE TONE AND NEW TECHNOLOGY**



## Special Features

### 1 Circle Fretting System (proprietary system)

Slightly curved frets mounted on the fingerboard are quite useful to enhance pitch accuracy, longer sustain, and true harmonics. ( Reference P06 )

### 2 Expert Fret Edge

FGN craftsmen are meticulous in ensuring Expert fret edges are rounded to perfection for a smooth feel on the neck. Position changes are seamless and the aesthetic is flawless.

### 3 5 Ply Neck Construction

We apply the 5ply neck construction for each model. The neck of MFA-FP is sandwiched in maple and mahoganies, and also one of MFA-HH, it is sandwiched in walnuts and mahoganies. Both of them increase in the strength of neck and enhances the resonance.

### 4 Precise-Hollow Body Special Construction

Designed by Fujigen R&D section and manufactured by Japanese pickup craftsmen who have long experience and great skills. It's used classy looking Alnico 5 humbucker for FP and Alnico 3 pole pieces for HH. For the FP models, we can create very unique and wide variety sounds with the push-pull switch on the tone wood knob. The tone of MFA series is not only for the jazz, country, and classic style guitar, some kinds of rock music is also very useful.

### 5 Coil Tap Switch (MFA-FP)

This switch system is mounted on MFA-FP model only. With the coil tap switch on the tone knob, we can create wide variety of sounds and different genres of music, Jazz, Rock, and Blues etc.



## FGN Masterfield SERIES MFA-FP



### SPECIFICATION FOR MFA-FP

CONSTRUCTION : Set In Neck	FRETS : 20F Medium (C.F.S)	TUNERS : Gotoh S510-SL
BODY : Spruce Top / Curly Maple Sides & Back	SCALE : 24.75" (628mm)	COLOR : JN, JB
NECK : Mahogany + Maple 5ply	CONTROLS : 1V, 1T(Push-Pull SW)	BRIDGE : Ebony Bridge
FINGERBOARD : Ebony	PICKUPS : FGN MFH	CASE : Hard Case
STRINGS : D'Addario ECG024 (.011-.050)	FINISH : Acrylic Lacquer	

## FGN Masterfield SERIES MFA-HH



### SPECIFICATION FOR MFA-HH

CONSTRUCTION : Set In Neck	FRETS : 20F Medium (C.F.S)	TUNERS : Gotoh S510-SL
BODY : Spruce Top / Curly Maple Sides & Back	SCALE : 24.75" (628mm)	COLOR : JB
NECK : Mahogany + Walnut 5ply	CONTROLS : 2V, 2T, 3-Way Toggle SW	BRIDGE : Rosewood Bridge
FINGERBOARD : Rosewood	PICKUPS : FGN HF-1 x 2	CASE : Hard Case
STRINGS : D'Addario ECG024 (.011-.050)	FINISH : Acrylic Lacquer	

C.F.S is installed on all FGN products.

# TEAM FGN MEMBERS

For more details, please check out [www.fgnguitars.com](http://www.fgnguitars.com)



**Stevie Salas**  
Solo

**Matty Lewis**  
Zebrahead

**Jona Weinhofen**  
Bring Me The Horizon  
I Killed The Prom Queen

**Steve Stevens**  
Billy Idol (Photo: cfjphoto.com)

**Stuart Paice**  
Your Demise



**Alan Ashby**  
Of Mice & Men  
(Photo: Anne C. Ferguson)

**Andy Williams**  
Every Time I Die  
(Photo: PUNKTASTIC)

**Cory Churko**  
Kelly Clarkson, Shania Twain etc.

**Philip Manansala**  
Of Mice & Men  
(Photo: Anne C. Ferguson)

**Lostprophets & Crossfaith**



**Alex Pavlov**  
AMATORY, STARDOWN  
(Photo: Maria Mitrofanova)

**Alexia Rodriguez**  
Eyes Set To Kill

**Andrew Seward**  
Against Me!

**Andy Glass**  
We Came As Romans  
(Photo: Anne C. Ferguson)

**Beau Burchell**  
SAOSIN

**Ben Osmondson**  
Zebrahead



**Jon Sullivan**  
Jacks Mannequin

**Jonas Ladekjaer**  
EMAROSA

**Joshua Moore**  
We Came As Romans  
(Photo: Anne C. Ferguson)

**Kaleo Wassman**  
Pepper

**Kevin Cameron**  
I Killed The Prom Queen, In Trenches

**Krzysztof Siewruk**  
SMOKESTACK



**Brad Rubuchin**  
Solo

**Brian Poulsen**  
Solo

**Bruce Bouillet**  
Solo

**Carl Forna**  
Mono Inc

**Carlos E. Perez**  
Mamacita On Fire  
(Photo: www.sethsiroanton.com)

**Chad Smith**  
Red Hot Chili Peppers



**Lou Cotton**  
We Came As Romans  
(Photo: Anne C. Ferguson)

**Makarov Pavel**  
SAKURA

**Matt Sorum**  
Velvet Revolver

**Matthew Wentworth**  
Our Last Night

**Mick Woll**  
King Kamehameha Club Band

**Mikhail Svetlov**  
Black Obelisk



**Chris Browne**  
Polar Bear Club  
(Photo: Anne C. Ferguson)

**Chris Davis**  
Texas In July

**Christian Royer**  
Texas In July

**Cisco Miranda**  
Eyes Set To Kill

**Daniel Osbourne**  
Your Demise

**Daniel Shapiro**  
The Word Alive  
(Photo: Anne C. Ferguson)



**Nate Morris**  
Polar Bear Club  
(Photo: Anne C. Ferguson)

**Neil Starr**  
Attack! Attack!

**Neil Zaza**  
Solo

**Oliver Hartmann**  
AVANTASIA

**Patrick Lachman**  
Diesel Machine

**Rene Lipps**  
Ex-Thomas Godoj



**David Friedman**  
Sound Engineer

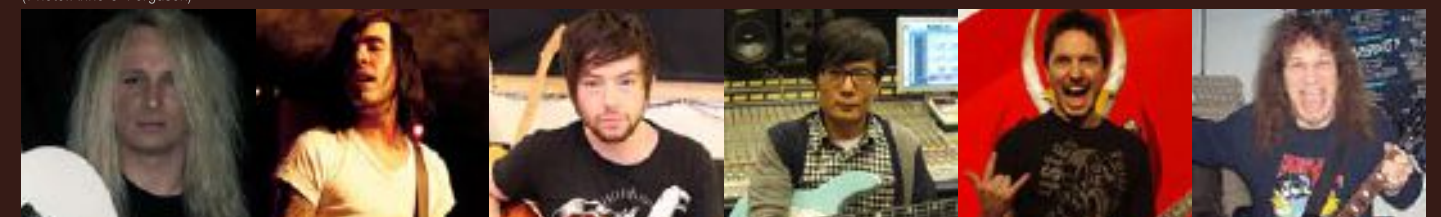
**Dirk Czuya**  
Der-W

**Dmitry Borisenkov**  
Black Obelisk

**Dominik Stammen**  
Born From Pain

**ER White**  
EMAROSA

**Erik Michael "Goose" Henning**  
Polar Bear Club  
(Photo: Anne C. Ferguson)



**Robert Marcello**  
Danger Danger

**Robin van Loenen**  
DESTINE

**Ryan Day**  
Attack! Attack!

**Seo Jae-Hyuck**  
Boowhal

**Steve Fekete**  
Avril Lavigne, Vertical Horizon

**Steve "Lips" Kudlow**  
ANVIL



**Fabrizio "Bicio" Leo**  
Solo

**Hojyun**  
YB

**Hubrecht Eversdijk**  
DESTINE

**Jacek Hiro**  
Sceptic, Virgin Snatch etc.

**Jack Fowler**  
Sleeping With Sirens  
(Photo: Anne C. Ferguson)

**Jake Hays**  
Cherie Currie



**Teddy Kumpel**  
Solo

**Tim Feerick**  
Dance Gavin Dance

**Todd Parsnow**  
Kark Franklin

**Tom May**  
The Menzingers

**Tom Vorstius Kruijff**  
DESTINE  
(Photo: Licht Gevoelig)

**Tony Pizzuti**  
The Word Alive  
(Photo: Anne C. Ferguson)



**James Bowman**  
Against Me!

**Jara Harris**  
Slapbak

**Jiang Jian-Min**  
Solo

**Joby Ford**  
The Bronx

**John Gallagher**  
DYING FETUS  
(Photo: METALSHIP)

**John Leven**  
EUROPE



**Will Davis**  
Attack! Attack!

**Will Swan**  
Dance Gavin Dance

**Wing Meng**  
Love Me Butch

**Woody Woodrow**  
Our Last Night

**Yoon Do Hyun**  
YB

**Zack Hansen**  
The Word Alive

and more members... 31