

WINTER

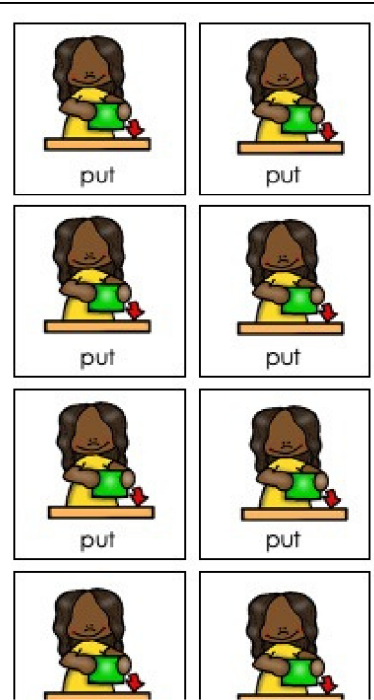
core words



An educational worksheet for children. The top left section is titled "my IN book" and features a winter scene with a tree, an owl, a reindeer, a dog, and a penguin. Below this is a 2x2 grid of cards, each showing a boy putting something into a green container, with the word "in" written below. The bottom left section is titled "my PUT book" and shows a girl in winter clothes standing in a room. To her right is a 6x2 grid of cards, each showing a girl putting something into a green container, with the word "put" written below. On the right side, there is a large illustration of a boy's face and a large black outline of a teapot. Above the teapot are two cards: one with a girl putting something into a container labeled "Put" and another with a boy putting something into a container labeled "the ingredients". At the bottom right, there is a teal rounded rectangle with the text "IN & PUT" in white. The entire worksheet is framed to look like a spiral notebook.

IN & PUT

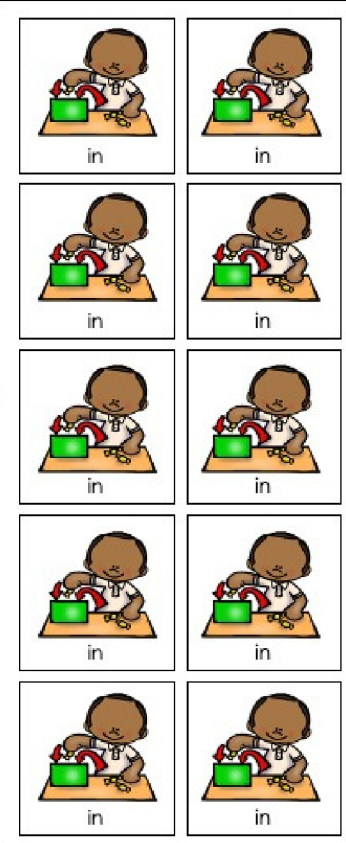
ENGAGING INTERACTIVE BOOKS PRACTICE THE WORDS WANT & ON



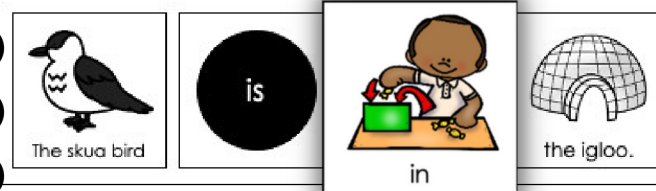
Engaging
interactive pieces



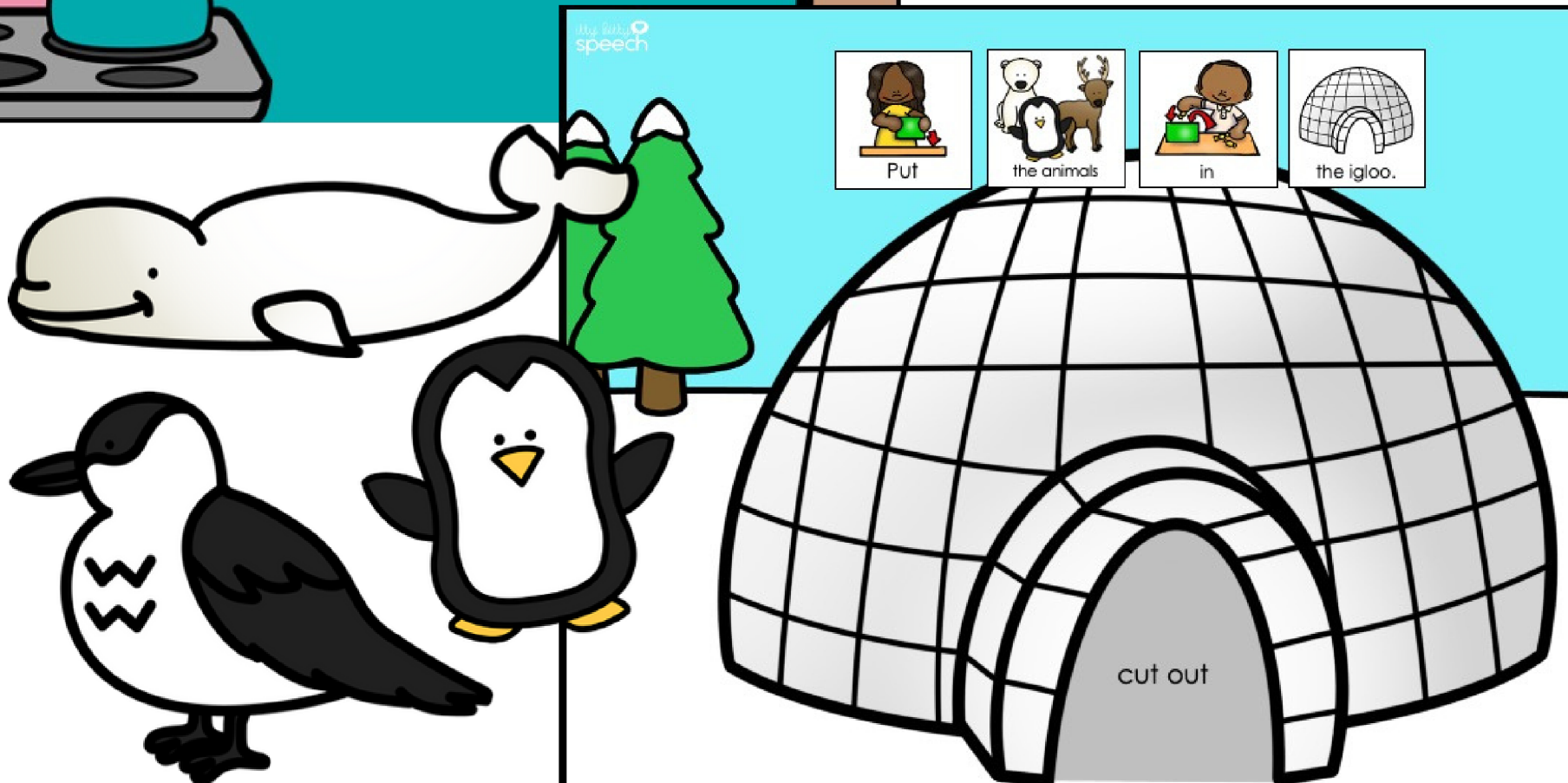
Errorless learning



Built in sentence
strips



INTERACTIVE ACTIVITIES



NO PREP ACTIVITIES

