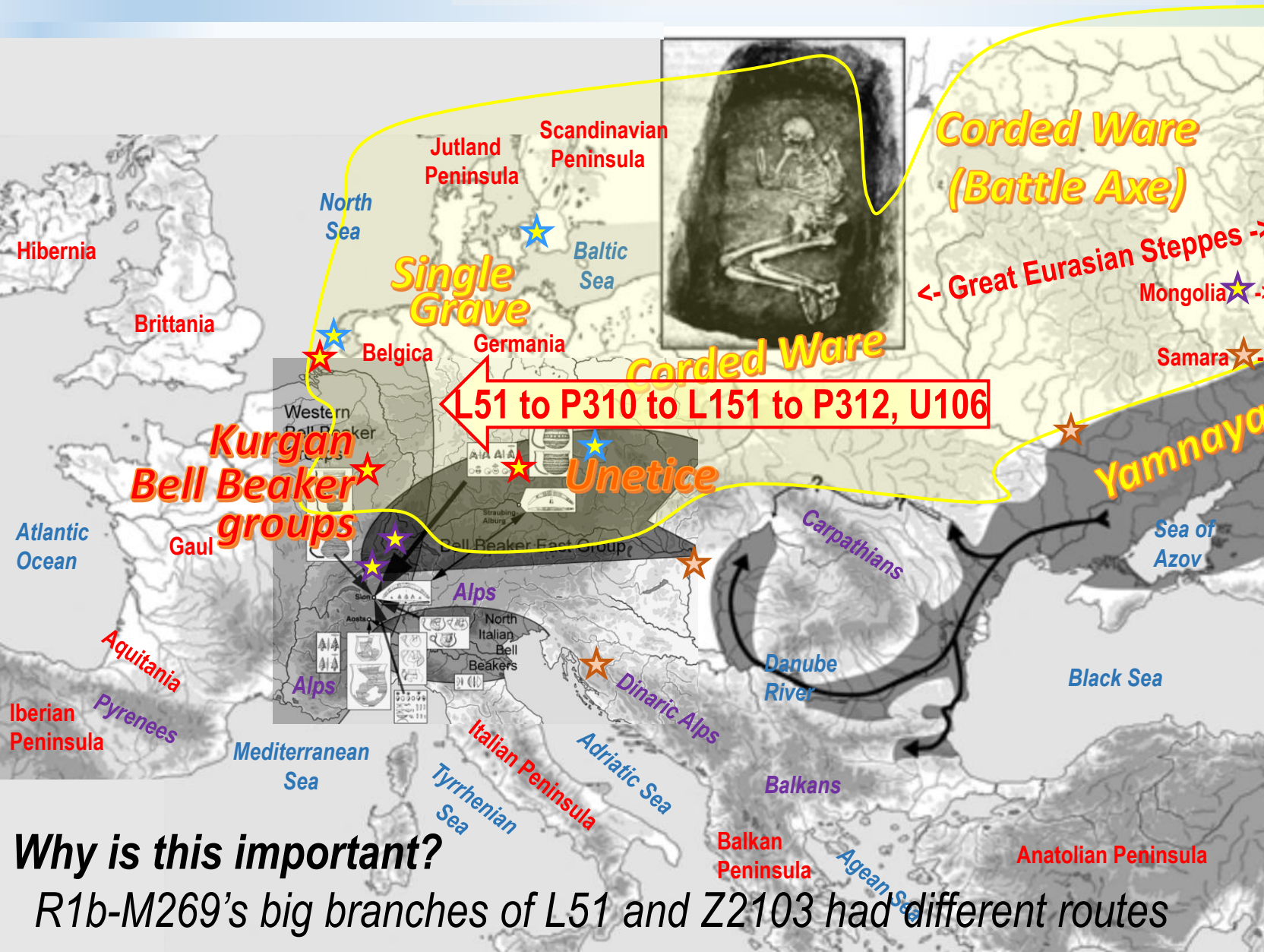


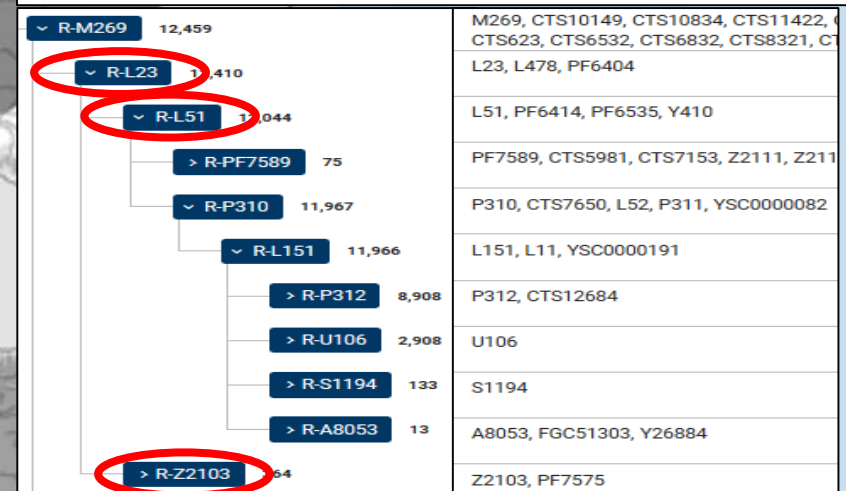
R1b-M269>L23>L51's path into Europe

Must link back east with R1b-M269>L23



Ancient DNA:

- P310:** ~3000BC; Shatar Chuluu, Mongolia (Afanasievo)
- ★ ~2650BC; Auvernier, Switzerland (Swiss Corded Ware)
- L151:** ~2700BC; Aesch, Switzerland (Swiss Corded Ware)
- P312:** ~2550BC; Osterhofen-Altenmarkt, Ger. (Bell Beaker)
- ★ ~2450BC; Oostwoud, Netherlands (Bell Beaker)
- ~2450BC; Les Villas d'Aurele, France (Bell Beaker)
- U106:** ~2300BC; Beddinge, Sweden (Swedish Battle Axe)
- ★ ~2100BC; Czech Rep (Unetice)
- ~1800BC; Oostwoud, Netherlands (with Bell Beaker)
- Z2103:** ~3100BC; Samara Oblast, Russia (Yamnaya)
- ★ ~2800BC; Kirovohrad, Ukraine (Yamnaya)
- ~2750BC; Croatia (Vucedol)
- ~2350BC; Szigetszentmiklós, Hungary (Yamnaya)



Why is this important?

R1b-M269's big branches of L51 and Z2103 had different routes

"The Transformation of Europe in the Third Millennium BC: the example of 'Le Petit-Chasseur I + III' (Sion, Valais, Switzerland)", Harrison & Heyd, 2007 (Supplemented in red/yellow by Tiger Walsh)

